

F.A.P. RTE.	SECTION	COUNTY	TOTAL SHEETS	SHEET NO.
328	(8BR-1)B-1	WAYNE	39	1

STATE OF ILLINOIS
DEPARTMENT OF TRANSPORTATION
DIVISION OF HIGHWAYS
**PROPOSED
HIGHWAY PLANS**

**FAP ROUTE 328 (US 45)
SECTION (8BR-1)B-1**

**WAYNE COUNTY
C-97-113-07**

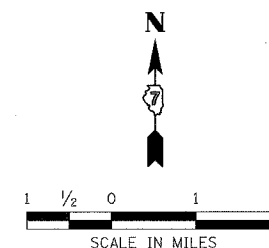
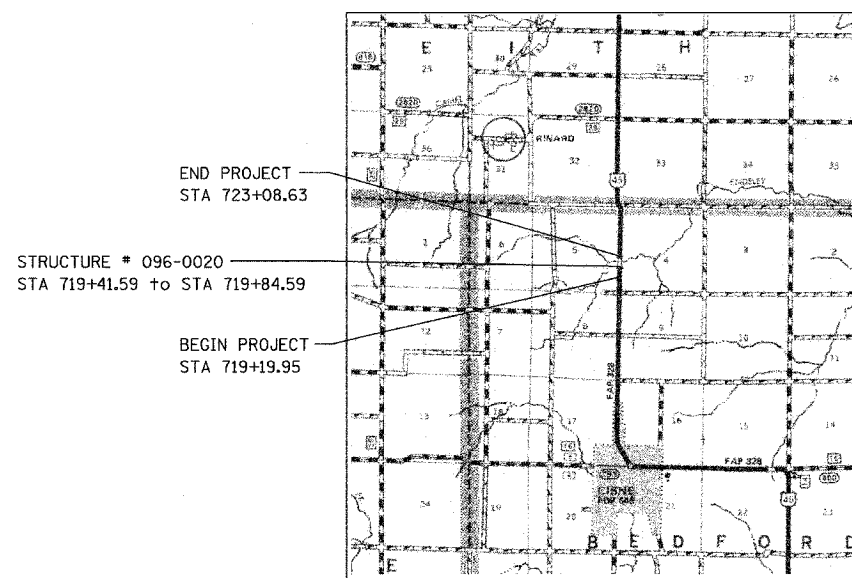
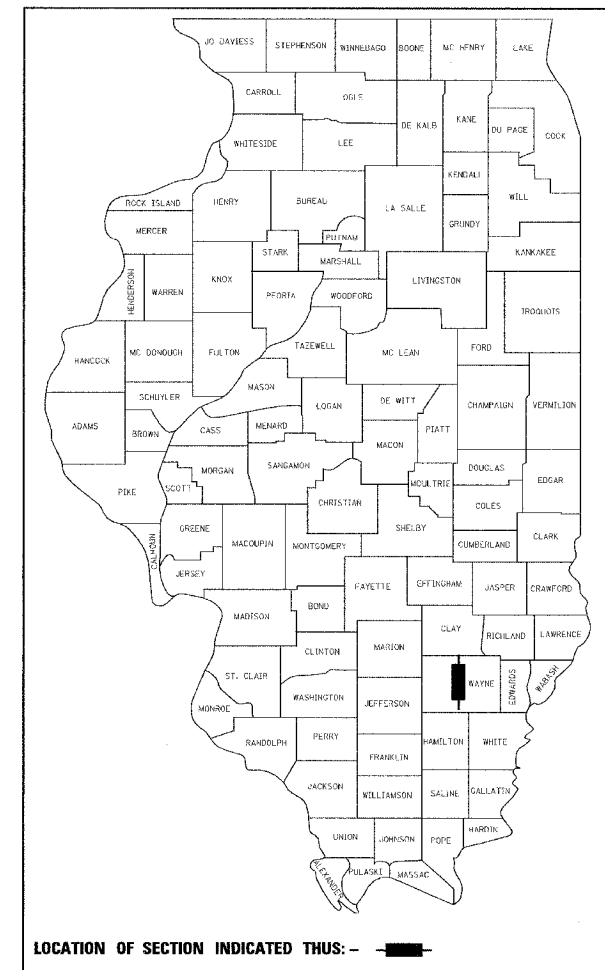
INDEX OF SHEETS

- 1 COVER
- 2 GENERAL NOTES
- 3-4 SUMMARY OF QUANTITIES
- 5-6 SCHEDULE OF QUANTITIES
- 7 ALIGNMENT TIES & BENCHMARKS
- 8 TYPICAL SECTIONS
- 9-10 PLAN & PROFILE
- 11-14 STAGE CONSTRUCTION PLAN
- 15-16 EROSION CONTROL PLAN
- 17-29 STRUCTURE PLANS SN 096-0020
- 30-39 CROSS SECTIONS

INDEX OF IDOT HIGHWAY STANDARDS

000001-04	635011-01
001001-01	701201-02
001006	701306-01
280001-03	701321-08
515001-02	701326-02
630001-07	702001-06
630201-04	704001-03
630301-04	780001-01
631032-03	781001-02
635006-02	

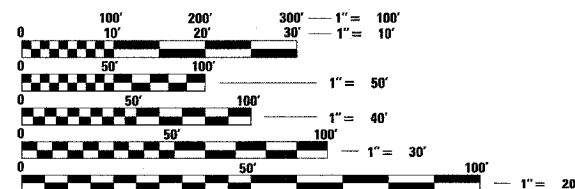
D-97-074-07



LOCATION MAP

WAYNE COUNTY
US 45

GROSS LENGTH OF PROJECT = 588.68 FEET (0.11 MILES)
NET LENGTH OF PROJECT = 588.68 FEET (0.11 MILES)



FULL SIZE PLANS HAVE BEEN PREPARED USING STANDARD ENGINEERING SCALES. REDUCED SIZED PLANS WILL NOT CONFORM TO STANDARD SCALES. IN MAKING MEASUREMENTS ON REDUCED PLANS, THE ABOVE SCALES MAY BE USED.

J.U.L.I.E.
JOINT UTILITY LOCATION INFORMATION FOR EXCAVATION
1-800-892-0123

CONTRACT NO. 74041

PLANS PREPARED BY
HORNER & SHIFRIN, INC.
ENGINEERS

640 PIERCE BOULEVARD SUITE 200 • O'FALLON, ILLINOIS 62269
5200 OAKLAND AVENUE • ST. LOUIS, MISSOURI 63110
www.hornershifrin.com



Stephanie S. Muentnich 4/21/07
STEPHANIE S. MUENTNICH, P.E.
License Expires 11/30/2007

STATE OF ILLINOIS
DEPARTMENT OF TRANSPORTATION
DIVISION OF HIGHWAYS

SUBMITTED June 25, 2007
Charles M. Reed
DEPUTY DIRECTOR OF HIGHWAYS, REGION ENGINEER

June 29, 2007
Eric E. Haral
ENGINEER OF DESIGN AND ENVIRONMENT

June 29, 2007
Milton R. Sosa
DIRECTOR OF HIGHWAYS, CHIEF ENGINEER

**PRINTED BY THE AUTHORITY
OF THE STATE OF ILLINOIS**