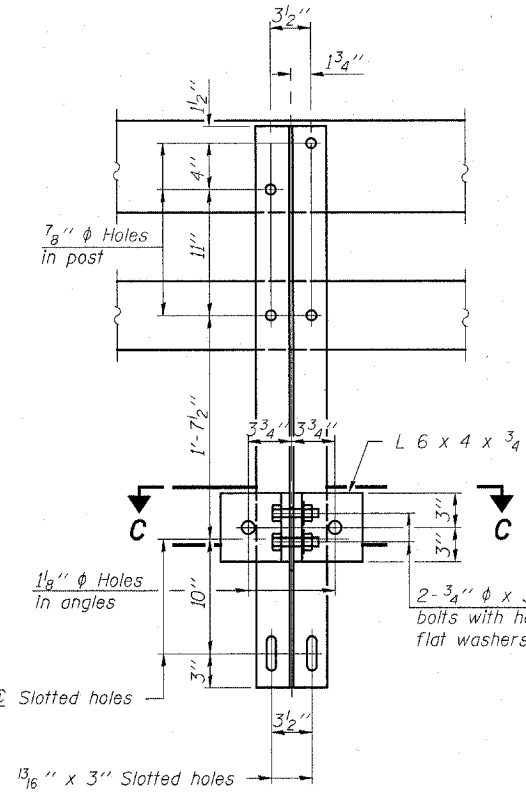
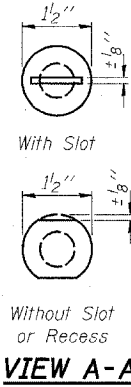
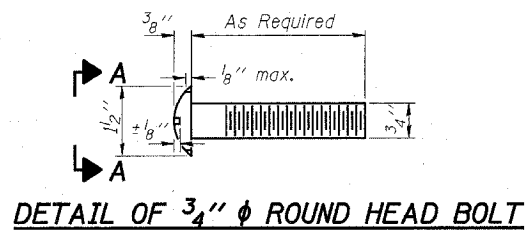


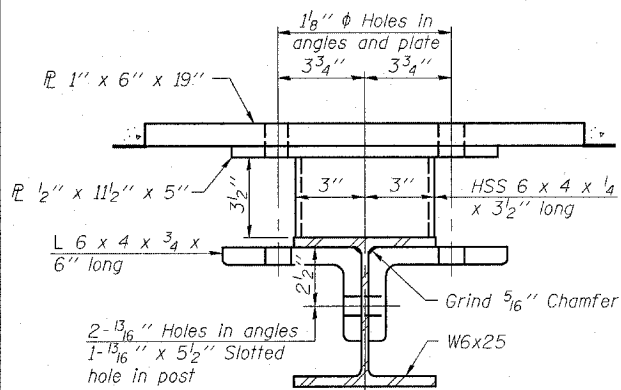
STATE OF ILLINOIS  
DEPARTMENT OF TRANSPORTATION

ROUTE NO.	SECTION	COUNTY	TOTAL SHEETS	SHEET NO.	SHEET NO. 5 15 SHEETS
F.A.P.	112BR-2	BOND	52	33	
RTE. 793					
FED. ROAD DIST. NO. 7	ILLINOIS	FED. AID PROJECT-			

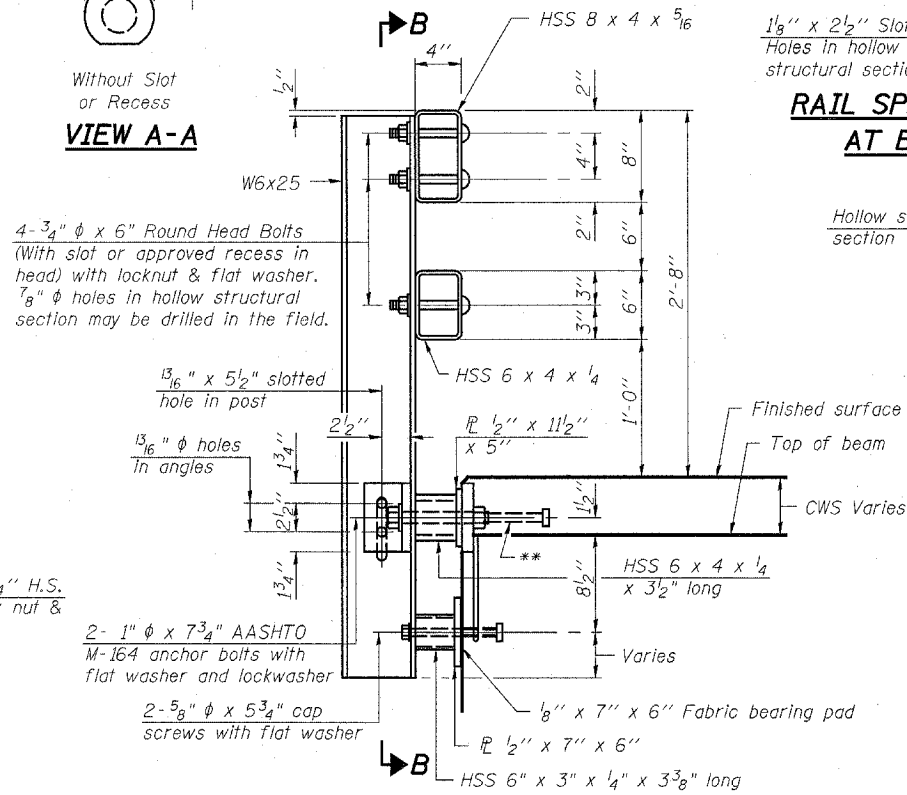
Contract #76897



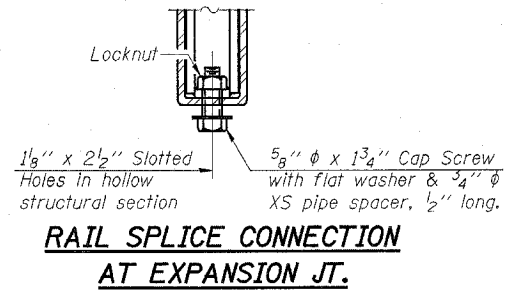
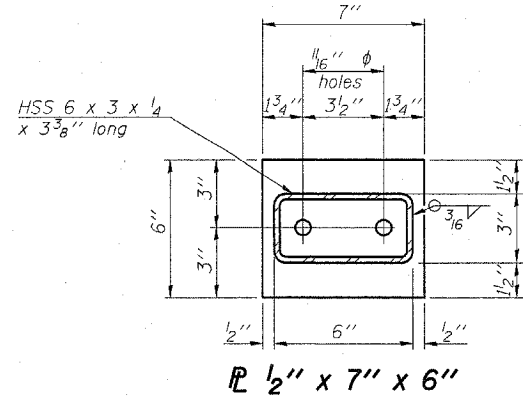
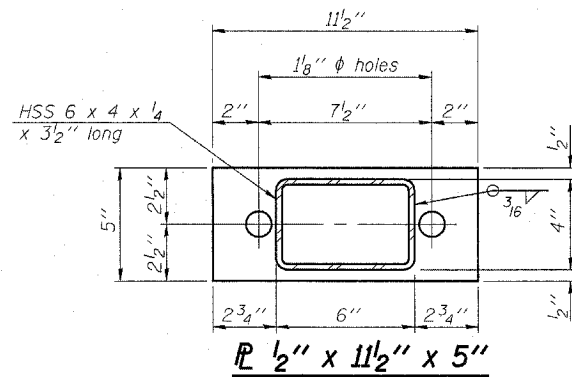
SECTION B-B



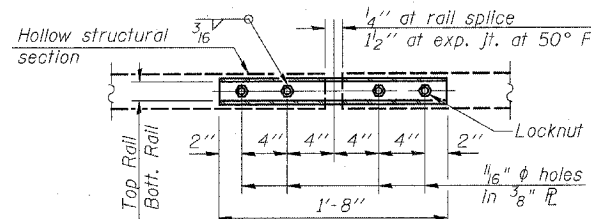
SECTION C-C



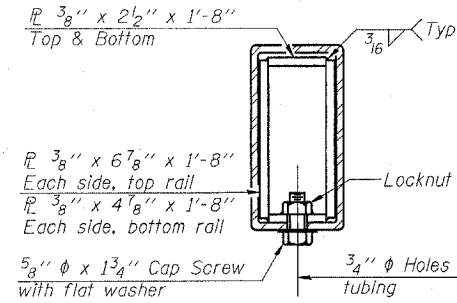
SECTION AT RAIL POST



RAIL SPLICE CONNECTION  
AT EXPANSION JT.

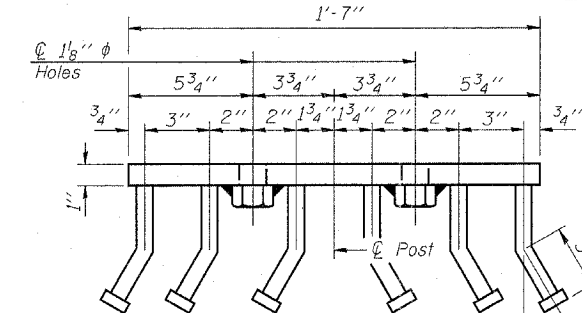


PLAN-BOTT. SPLICE AT  
TYPICAL

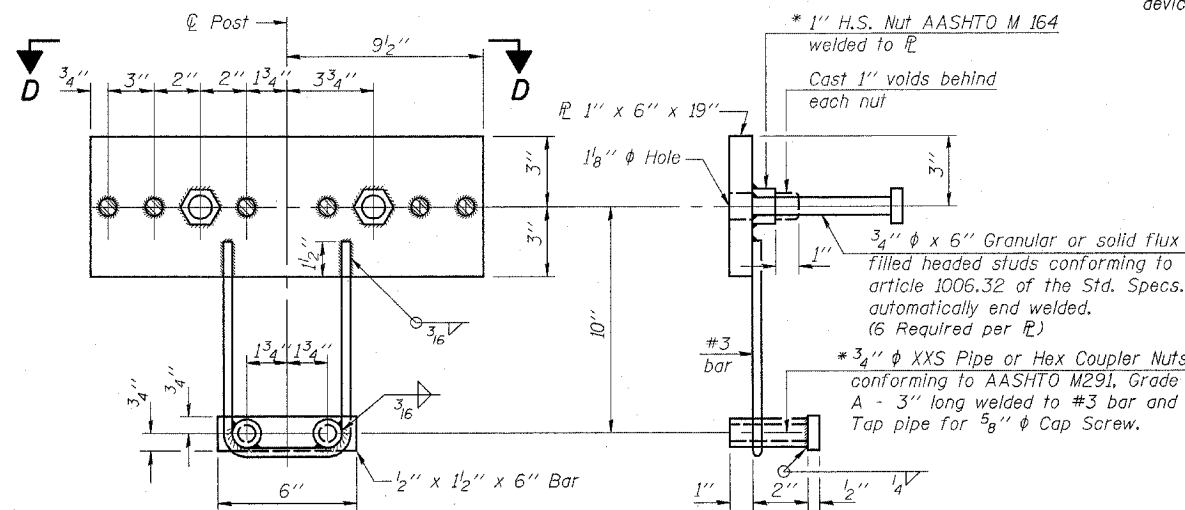


SECTION AT  
RAIL SPLICE

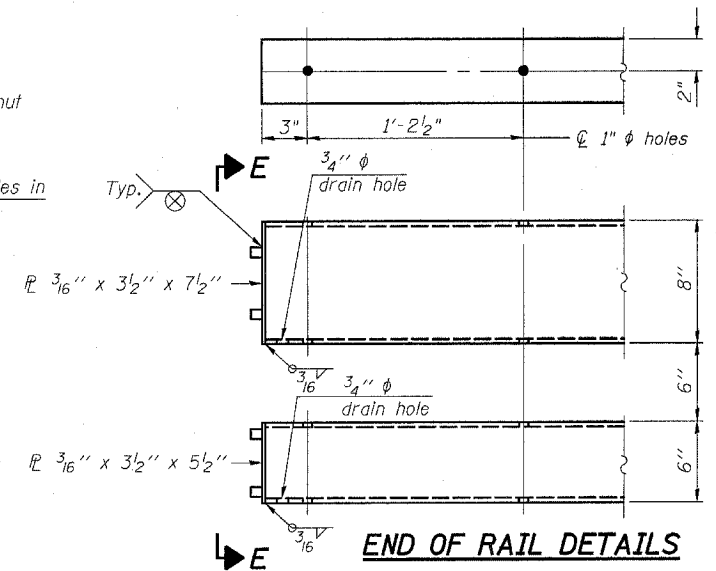
4 - 5/8" reduced base welded studs. Provide 4 - 5/8" washers and self-locking nuts or nuts and jam nuts for guardrail connection shown on Std. 631032



VIEW D-D



ANCHOR DEVICE



END OF RAIL DETAILS

Notes:  
All field drilled holes shall be coated with an approved zinc rich paint before erection.  
For multi-span bridges, sufficient 1/4" x 6" x 1'-2" galvanized steel shims shall be provided to align rail between adjacent spans. Cost included with Steel Railing, Type SM.  
Steel rail elements shall be galvanized according to Article 509.05 of the Standard Specifications.  
\*\* The studs of the anchor devices shall be placed below the top reinforcement bars and the outermost longitudinal reinforcement bar shall be placed directly above the studs of the rail post anchor device.

BILL OF MATERIAL

Item	Unit	Quantity
Steel Railing, Type SM	Foot	413

STEEL RAILING, TYPE SM  
WITH CONCRETE WEARING SURFACE  
IL ROUTE 143 OVER BEAVER CREEK  
F.A.P. ROUTE 793 - SECTION 112BR-2  
BOND COUNTY  
STA. 670+40  
STRUCTURE NO. 003-0035

\* Threaded areas shall be plugged or blocked off during casting of beam. Galvanized after fabrication.