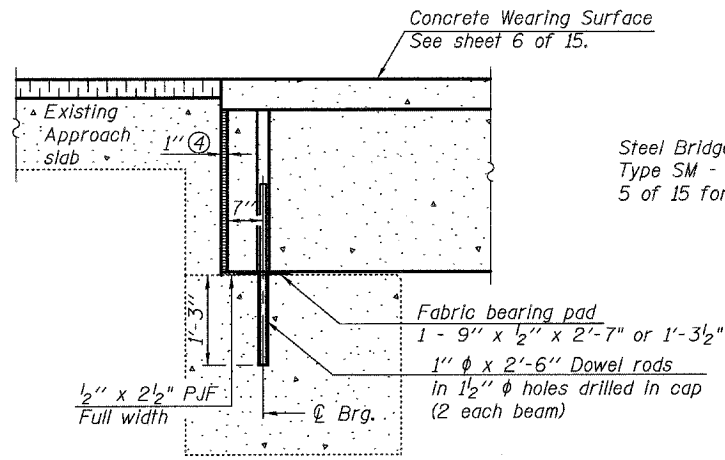


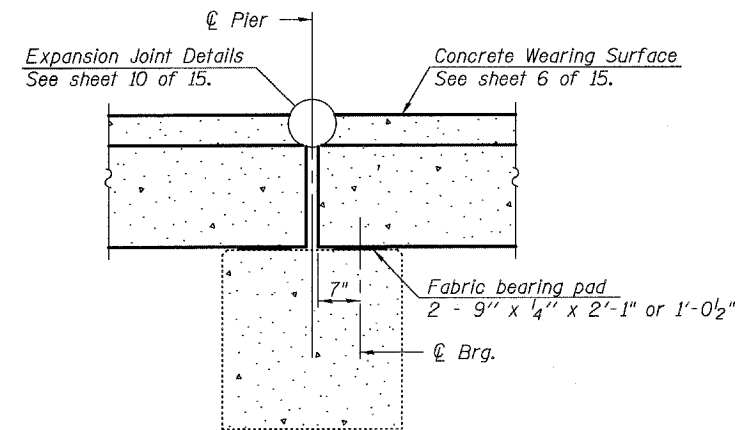
STATE OF ILLINOIS
DEPARTMENT OF TRANSPORTATION

ROUTE NO.	SECTION	COUNTY	TOTAL SHEETS	SHEET NO.	SHEET NO. 7 15 SHEETS
F.A.P. RTE. 793	112BR-2	BOND	52	35	
FED. ROAD DIST. NO. 7	ILLINOIS	FED. AID PROJECT-			

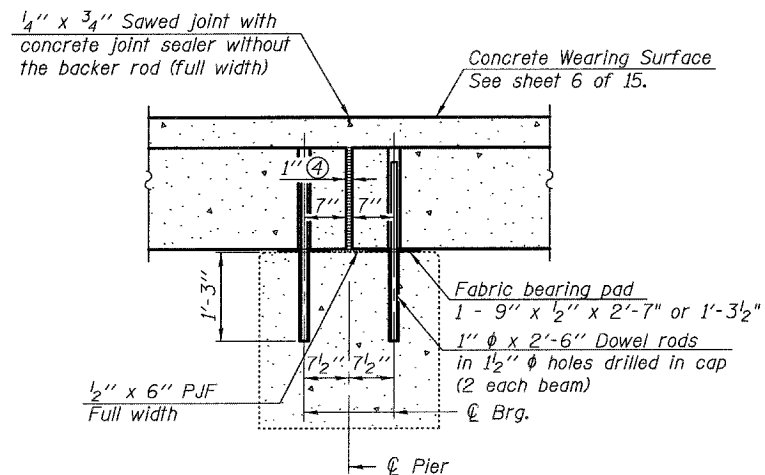
Contract #76897



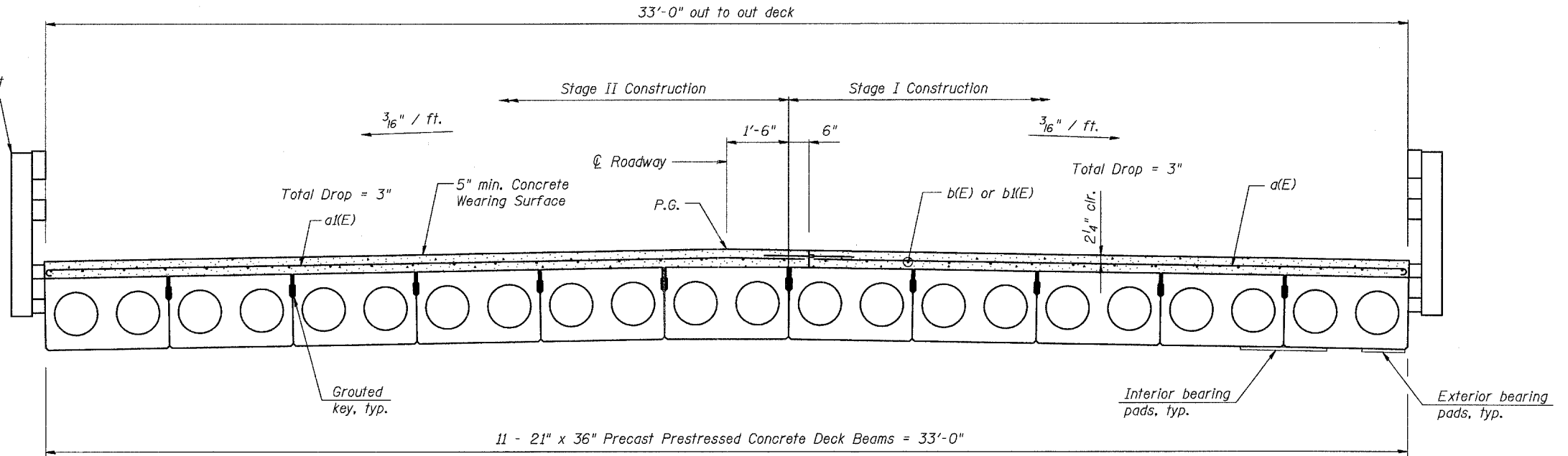
SECTION THRU ABUTMENT



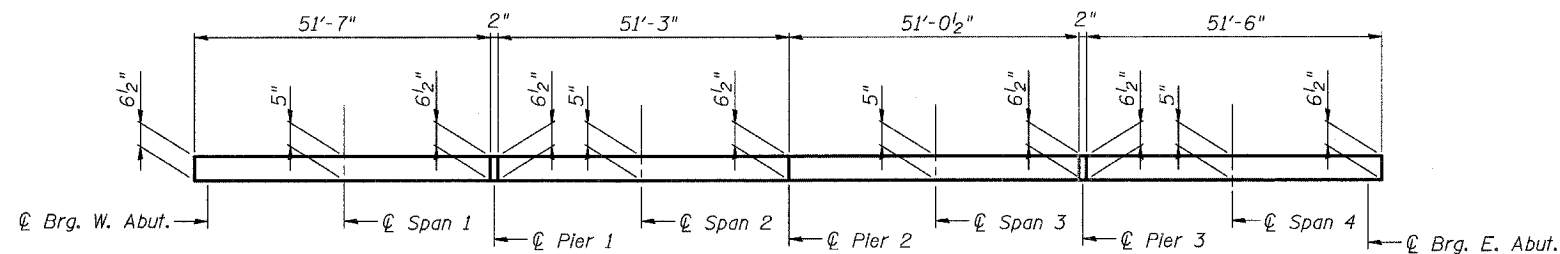
SECTION THRU PIERS 1 & 3



SECTION THRU PIER 2

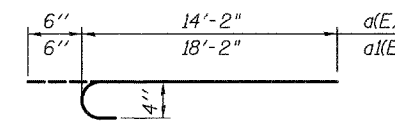


CROSS SECTION
(Looking East)

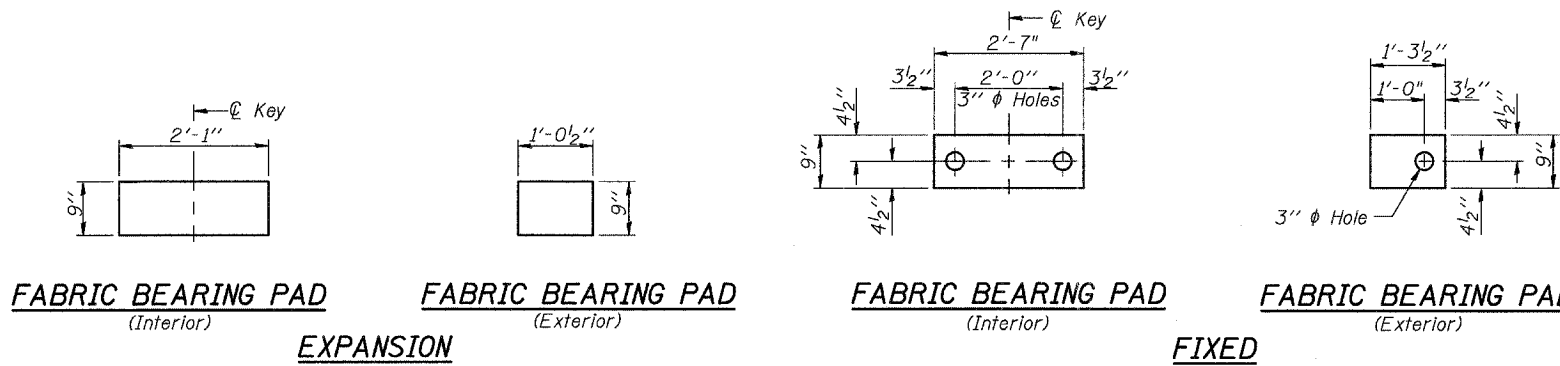


REINFORCED CONCRETE WEARING SURFACE PROFILE

Note:
Thicknesses shown are for Beams 1 thru 5 and 7 thru 11. Thickness for Beam 6 will vary from those shown at beam edges to 1/4" additional at ϕ Roadway.



a(E) & a(I(E)) BARS



- Notes:
- After beams have been erected, holes shall be drilled into substructure and anchor dowels placed. Dowel holes shall be filled with non-shrink grout to top of beam and allowed to cure min. 24 hrs. prior to grouting the shear keys.
 - Dowel rods drilled in cap are included in the cost of Precast Prestressed Concrete Deck Beams (21" depth).
 - Concrete wearing surface to be poured after grouting the shear keys.
 - 1" Jt. shall be filled with non-shrink grout. 1" dimension may vary to accommodate tolerance in beam lengths.

SUPERSTRUCTURE DETAILS
IL ROUTE 143 OVER BEAVER CREEK
F.A.P. ROUTE 793 - SECTION 112BR-2
BOND COUNTY
STA. 670+40
STRUCTURE NO. 003-0035