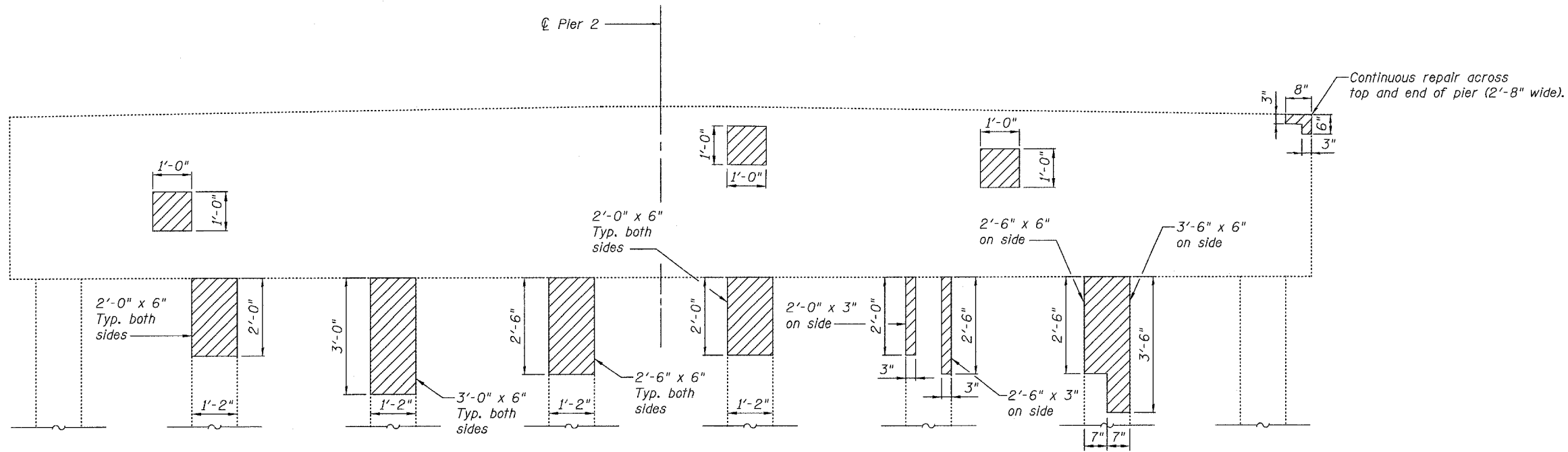


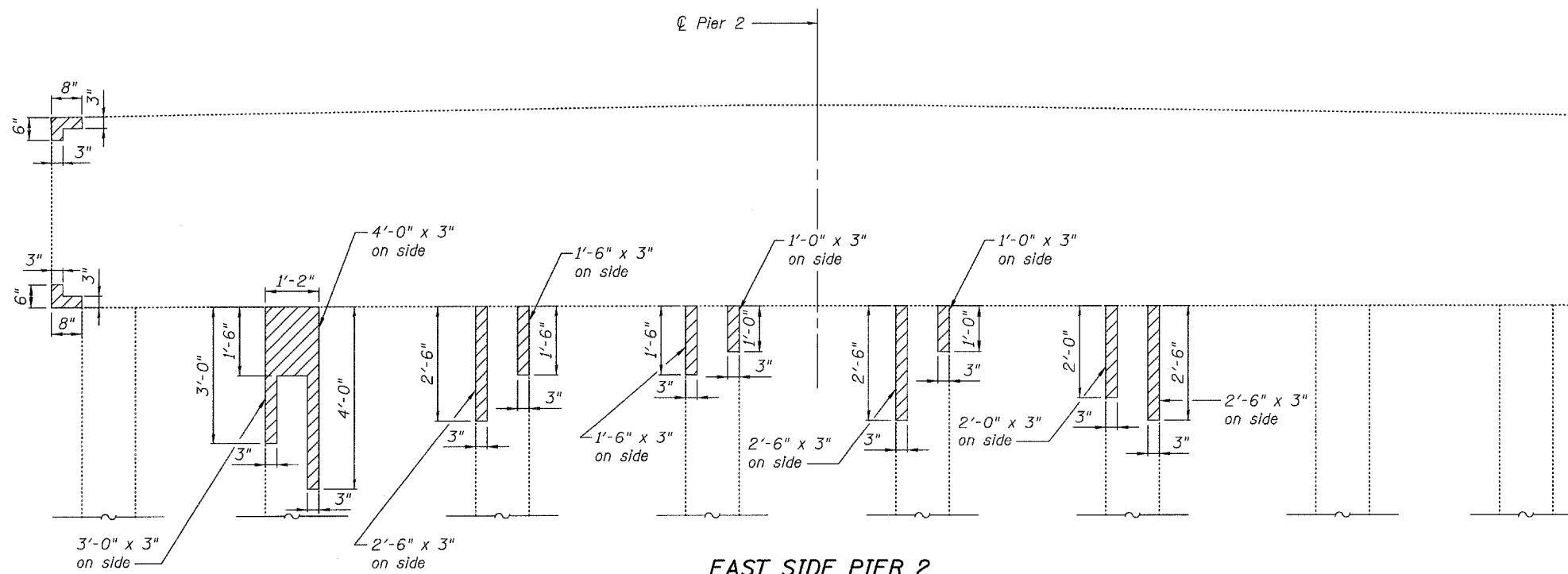
STATE OF ILLINOIS
DEPARTMENT OF TRANSPORTATION

ROUTE NO.	SECTION	COUNTY	SHEETS	SHEET	SHEET NO. 13 15 SHEETS
F.A.P. RTE. 793	112BR-2	BOND	52	41	
FED. ROAD DIST. NO. 7	ILLINOIS	FED. AID PROJECT-			

Contract #76897



WEST SIDE PIER 2
(Looking East)



EAST SIDE PIER 2
(Looking West)

BILL OF MATERIAL

Structural Repair of Concrete ($\leq 5''$)	Sq. Ft.	49

Note:
Hatched area indicates approximate area of Structural Repair of Concrete. Exact repair area to be determined by Engineer.

PIER 2 STRUCTURAL REPAIR OF CONCRETE
IL ROUTE 143 OVER BEAVER CREEK
F.A.P. ROUTE 793 - SECTION 112BR-2
BOND COUNTY
STA. 670+40
STRUCTURE NO. 003-0035