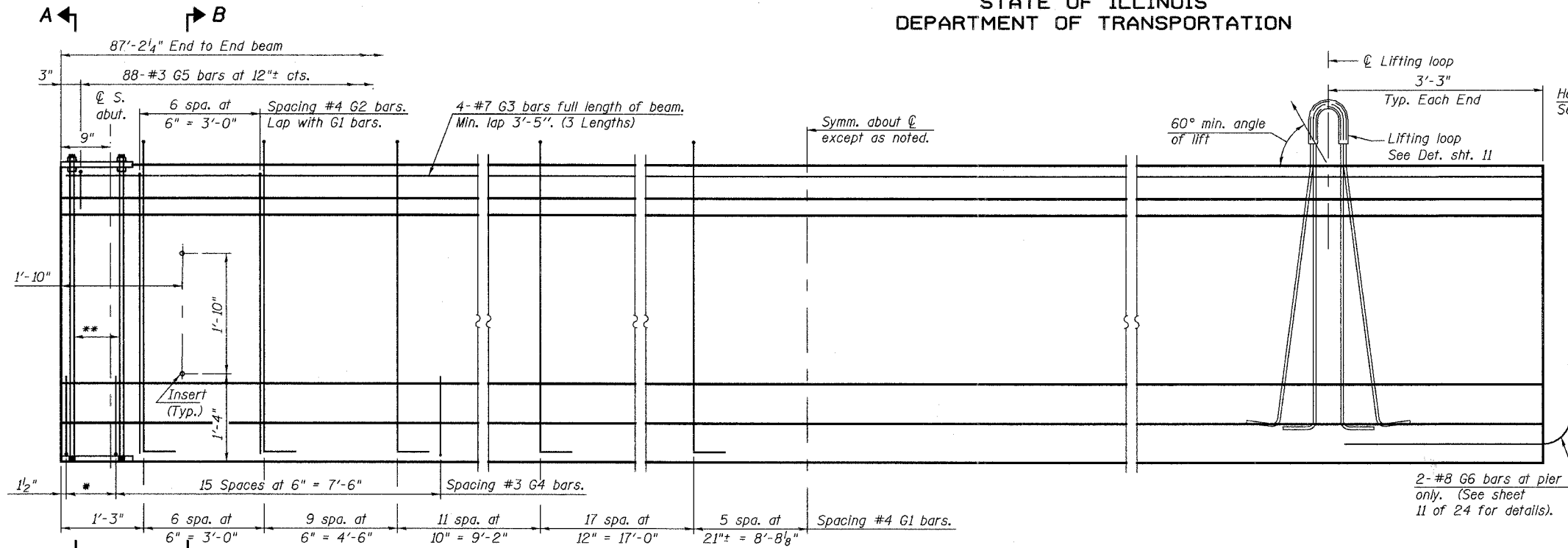


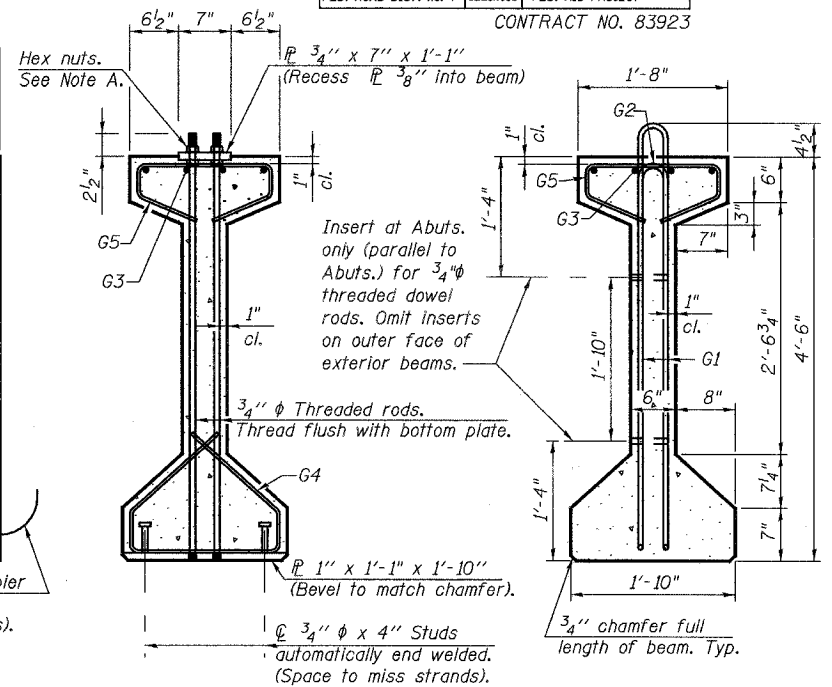
STATE OF ILLINOIS
DEPARTMENT OF TRANSPORTATION

ROUTE NO.	SECTION	COUNTY	TOTAL SHEETS	SHEET NO.
F.A.U. 3887	06-00214-06-BR	KANE	55	25
FED. ROAD DIST. NO. 7	ILLINOIS	FED. AID PROJECT-		

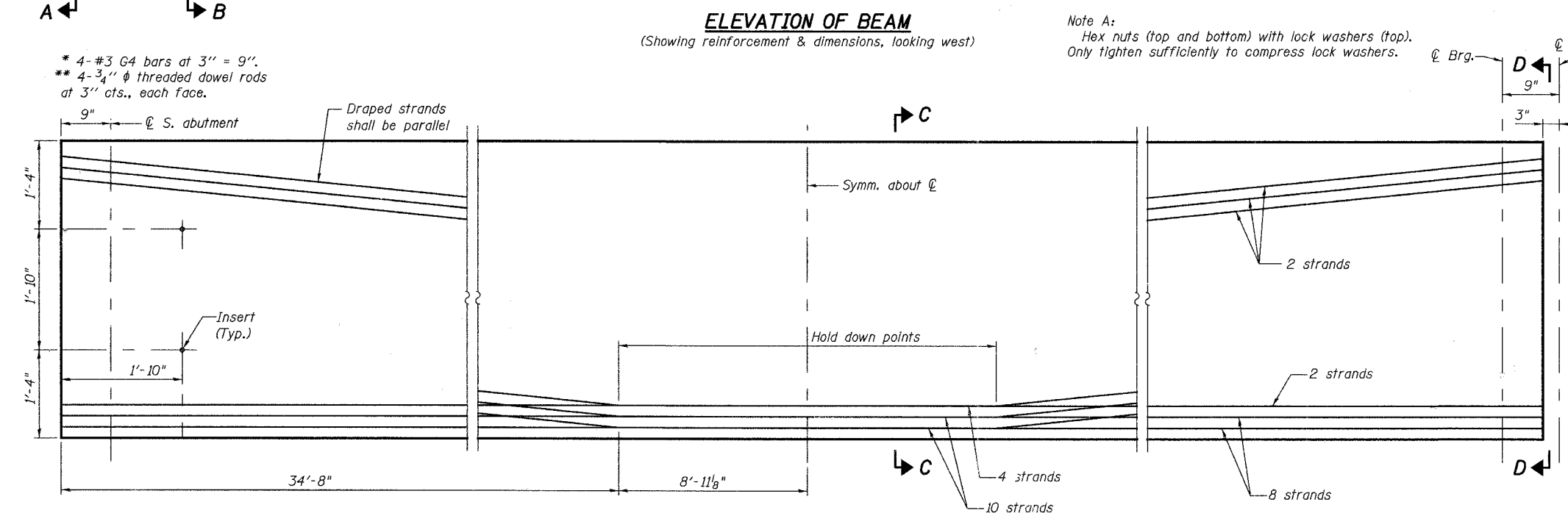
SHEET NO. 10
25 SHEETS
CONTRACT NO. 83923



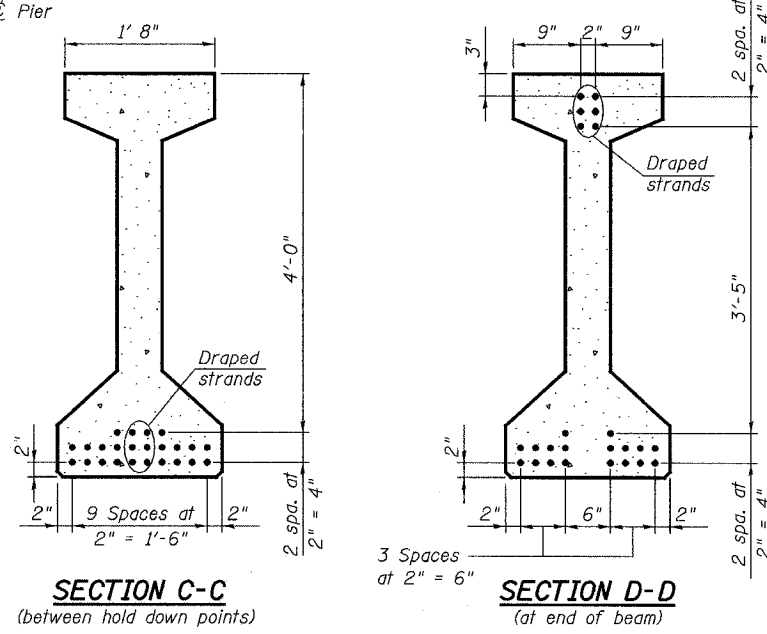
ELEVATION OF BEAM
(Showing reinforcement & dimensions, looking west)



SECTION A-A and **SECTION B-B**



ELEVATION OF BEAM
(Showing prestressing steel)



SECTION C-C (between hold down points) and **SECTION D-D** (at end of beam)

Note A:
Hex nuts (top and bottom) with lock washers (top).
Only tighten sufficiently to compress lock washers.

DATE: \$ TIME: \$

DESIGNED	ASL
CHECKED	NPP
DRAWN	SOI
CHECKED	NPP

PI-4-54
12-21-06

*** BAR LIST
ONE BEAM ONLY

Bar	No.	Size	Length	Shape
G1	97	#4	10'-5"	∩ L
G2	14	#4	8'-8"	∩
G3	12	#7	32'-4"	—
G4	38	#3	4'-11"	∩
G5	88	#3	3'-5"	∩
G6	2	#8	3'-9"	∩

*** For information only

- Notes:
- See sheet 11 of 25 for additional details and Bill of Material.
 - Required release strength, f'cl, shall be 5,000 psi.
 - See sheet 18 of 25 for Staining Concrete Structures details.
 - Provide a minimum of 4 Inserts in the web of fascia beams to support sign structures. The location and size will be as determined by the Engineer. The cost of inserts is included with Furnishing and Erecting Precast Prestressed Concrete I-Beams, 54 In.

REVISIONS	
NAME	DATE

ILLINOIS DEPARTMENT OF TRANSPORTATION
ILLINOIS ROUTE 31 OVER NEW STEARNS ROAD
KANE COUNTY
PPC I-BEAM DETAILS
SPAN 2

F.A.U. 3887
STATION 113+61.11
SCALE:

SECTION 06-00214-06-BR
STRUCTURE NO. 045-2031
DATE: 00/00/2007

