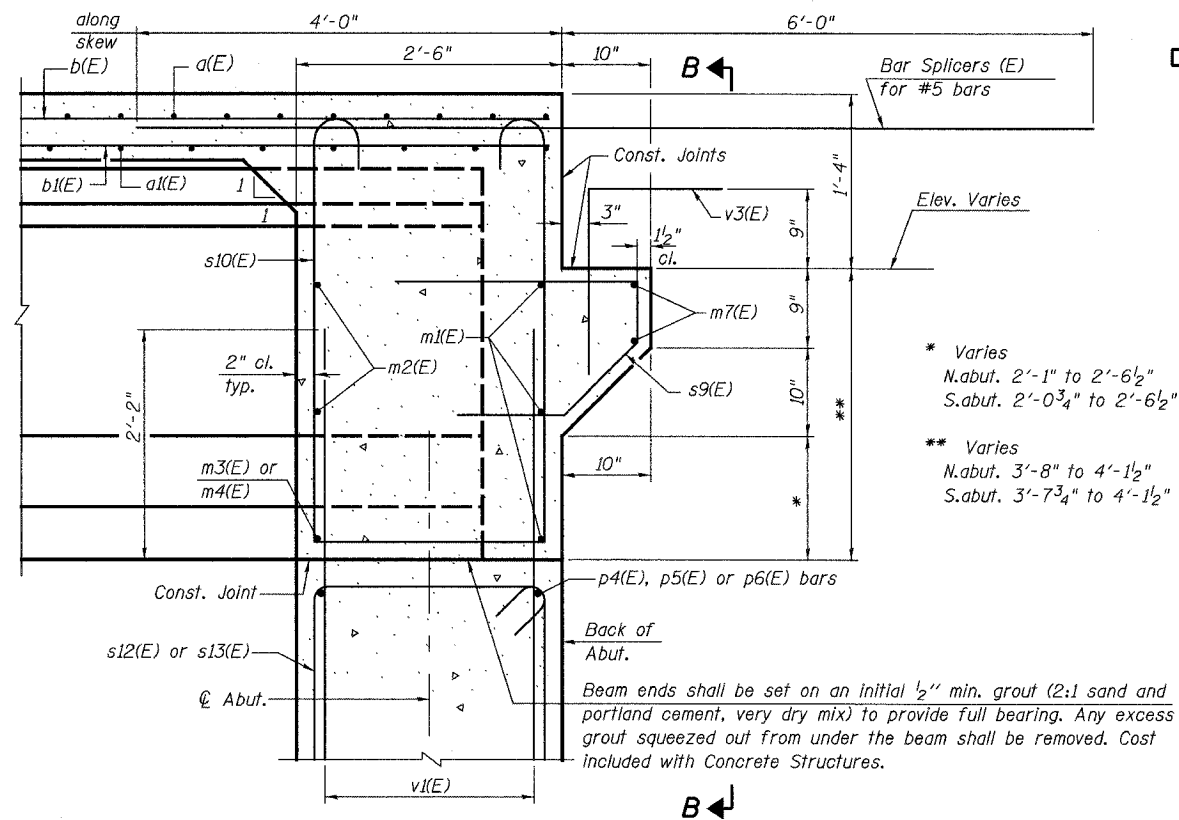


STATE OF ILLINOIS
DEPARTMENT OF TRANSPORTATION

ROUTE NO.	SECTION	COUNTY	TOTAL SHEETS	SHEET NO.
F.A.U. 3887	06-00214-06-BR	KANE	55	27
FED. ROAD DIST. NO. 7		ILLINOIS FED. AID PROJECT-	CONTRACT NO. 83923	

SHEET NO. 12
25 SHEETS



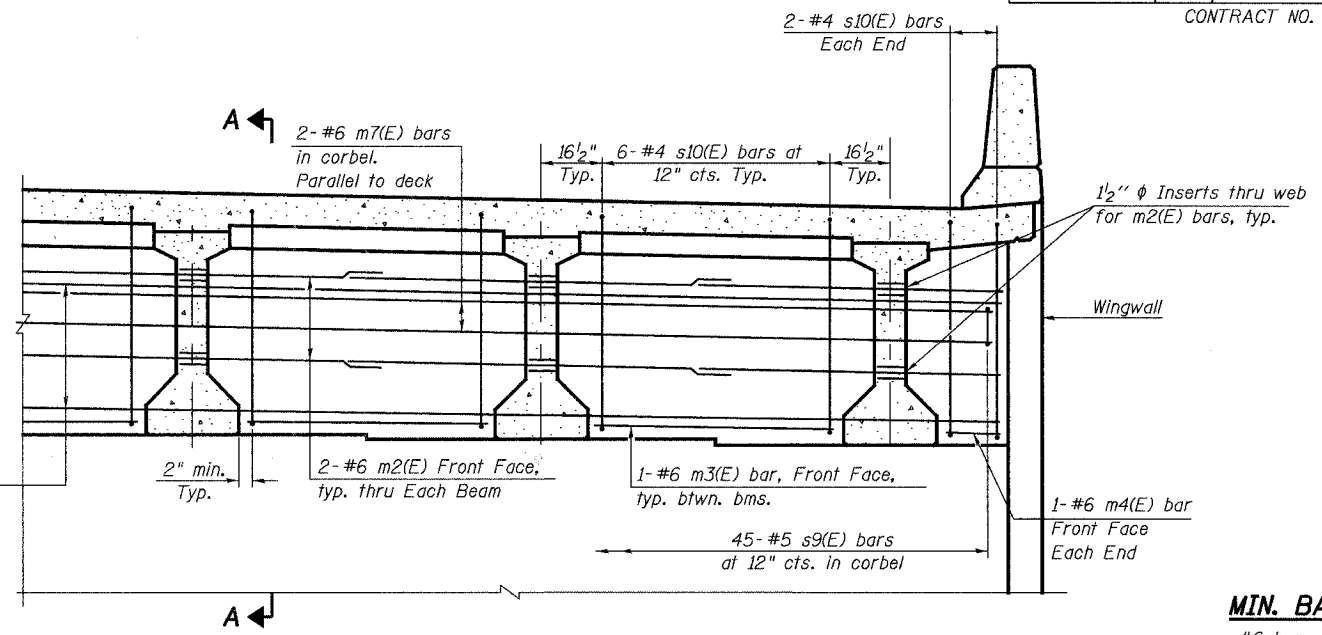
Bar Splicers (E) for #5 bars

Const. Joints

Elev. Varies

* Varies
N.abut. 2'-1" to 2'-6 1/2"
S.abut. 2'-0 3/4" to 2'-6 1/2"

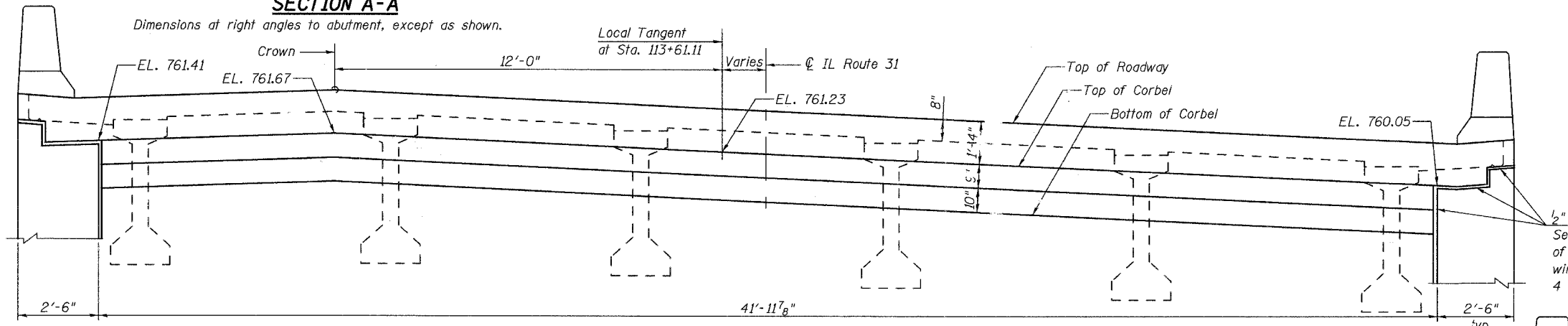
** Varies
N.abut. 3'-8" to 4'-1 1/2"
S.abut. 3'-7 3/4" to 4'-1 1/2"



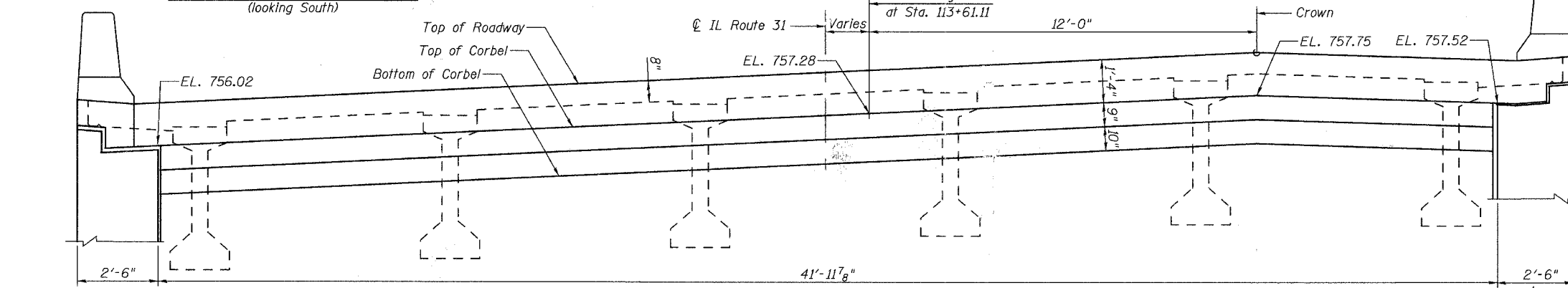
MIN. BAR LAP
#6 bar = 2'-0"

SECTION A-A

Dimensions at right angles to abutment, except as shown.



SECTION B-B AT N. ABUT
(looking South)



SECTION B-B AT S. ABUT
(looking North)

Notes:

1. Reinforcement bars in diaphragm are billed with superstructure on sheet 7 of 25.
2. Concrete in diaphragm is included with Concrete Superstructure on sheet 7 of 25.
3. For details of bars s9(E), s10(E) and v3(E) see sheet 7 of 25.
4. The s9(E), s10(E) and v3(E) bars shall be placed parallel to the beams. Spacing for these bars shall be at right angles to the beams.
5. See sheet 18 of 25 for Architectural Form liner details.

DESIGNED	ASL
CHECKED	NPP
DRAWN	SOI
CHECKED	NPP

PI-2D1 & PI-2DDI 11-1-06

URS
100 South Wacker Drive,
Suite 500
Chicago, IL 60606
(312) 939-1000

REVISIONS	
NAME	DATE

ILLINOIS DEPARTMENT OF TRANSPORTATION
ILLINOIS ROUTE 31 OVER NEW STEARNS ROAD
KANE COUNTY
**DIAPHRAGM DETAILS
AT ABUTMENTS**

F.A.U. 3887
STATION 113+61.11
SCALE:

SECTION 06-00214-06-BR
STRUCTURE NO. 045-2031
DATE: 00/00/2007