

STATE OF ILLINOIS
DEPARTMENT OF TRANSPORTATION
DIVISION OF HIGHWAYS

PLANS FOR PROPOSED FEDERAL AID HIGHWAY

F.A.U. ROUTE: 1583
115TH STREET
CENTRAL AVENUE TO CICERO AVENUE
STREET LIGHTING
PROJECT NO.: M-8003(540)
JOB NO.: C-91-055-06
M.F.T. SECTION NO.: 02-00080-00-LT
VILLAGE OF ALSIP
COOK COUNTY

F.A.U. RTE.	SECTION	COUNTY	TOTAL SHEETS	SHEET NO.
1583	02-00080-00-LT	COOK	10	1
FED. ROAD DIST. NO. 1	ILLINOIS	FED. AID PROJECT M-8003(540)		

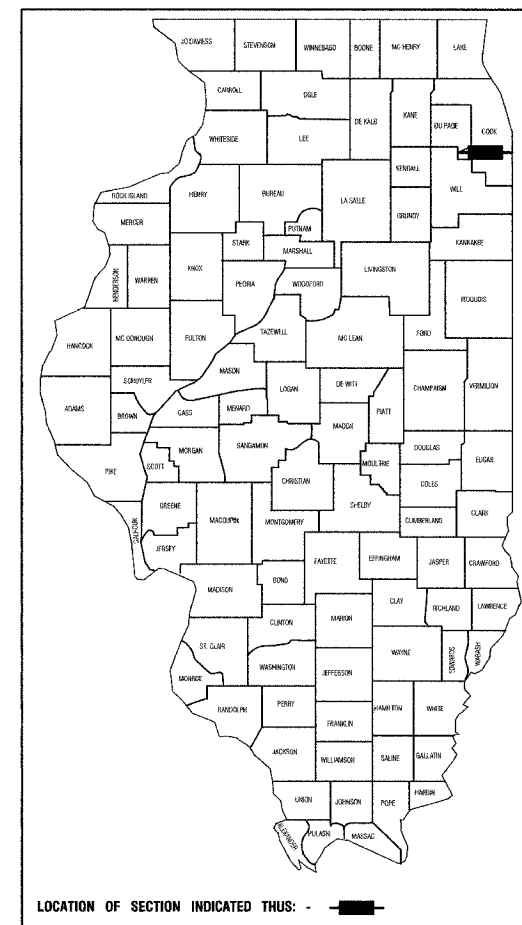
CONTRACT #83924

INDEX OF SHEETS

1. COVER SHEET
2. SUMMARY OF QUANTITIES AND GENERAL NOTES
- 3.-5. PLAN SHEETS
6. SINGLE LINE DIAGRAMS
- 7.-10. DETAIL SHEETS

STATE STANDARDS

000001-04	STANDARD SYMBOLS, ABBREVIATIONS & PATTERNS
701501-03	URBAN LANE CLOSURE, 2L, 2W, UNDIVIDED
701606-04	URBAN LANE CLOSURE, MULTILANE, 2W WITH MOUNTABLE MEDIANS
701701-04	URBAN LANE CLOSURE, MULTILANE INTERSECTION
701801-03	LANE CLOSURE, MULTILANE, 1W OR 2W CROSSWALK OR SIDEWALK CLOSURE
702001-06	TRAFFIC CONTROL DEVICES



STATE OF ILLINOIS
DEPARTMENT OF TRANSPORTATION
DIVISION OF HIGHWAYS

APPROVED: 5/14/07
Patrick E. Hutchinson MAYOR, VILLAGE OF ALSIP

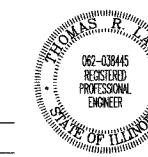
PASSED: MAY 16 2007
Chris M. Holt REGION ONE ENGINEER OF LOCAL ROADS & STREETS

RELEASED FOR BID BASED ON LIMITED REVIEW: MAY 17 2007
Thomas R. Lang DEPUTY DIRECTOR OF HIGHWAYS, REGION ONE ENGINEER

**PRINTED BY THE AUTHORITY OF
THE STATE OF ILLINOIS**

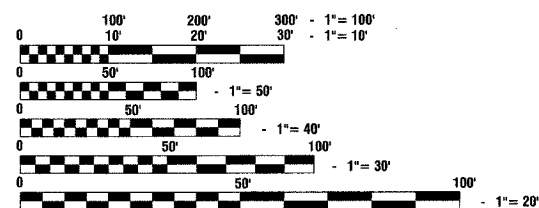
PREPARED BY OR UNDER THE
DIRECT SUPERVISION OF:

Thomas R. Lang
5/15/07



LICENSE EXPIRES: 11/30/07

SCALES
 PLAN - 1"=50'
 PROFILE HORIZ. - 1"=50'
 PROFILE VERT. - 1"=5'
 CROSS SECTIONS - 1"=10'



FULL SIZE PLANS HAVE BEEN PREPARED USING STANDARD ENGINEERING SCALES, REDUCED SIZED PLANS WILL NOT CONFORM TO STANDARD SCALES, IN MAKING MEASUREMENTS ON REDUCED PLANS, THE ABOVE SCALES MAY BE USED.

J.U.L.I.E.
JOINT UTILITY LOCATION INFORMATION FOR EXCAVATION
1-800-892-0123

CONTRACT NO. 83924

115TH STREET BEGINS
STA 106+55.00



115TH STREET ENDS
STA 149+07.00

LOCATION MAP

GROSS LENGTH=4,252.00 FEET=0.805 MILES
NET LENGTH=4,252.00 FEET=0.805 MILES

FEDERAL AID COORDINATOR: PHIL MARCYN 847-705-4189
CONSULTANTS: ROBINSON ENGINEERING, LTD. 708-331-6700