

STATE OF ILLINOIS
DEPARTMENT OF TRANSPORTATION
DIVISION OF HIGHWAYS
PLANS FOR PROPOSED
FEDERAL AID PROJECT
ILLINOIS TRANSPORTATION
ENHANCEMENT PROGRAM(ITEP)
TRANSPORTATION CORRIDOR
BEAUTIFICATION PROJECT
BROADWAY AVENUE
(LINCOLN AVE. TO MONROE AVE.)
SECTION NO. 06-00121-00-LS
PROJECT TE-00D1(773)
VILLAGE OF BROOKFIELD
COOK COUNTY
JOB NO. C-91-309-07

FOR INDEX OF SHEETS
SEE SHEET NO. 2

PROJECT LOCATED IN
VILLAGE OF BROOKFIELD

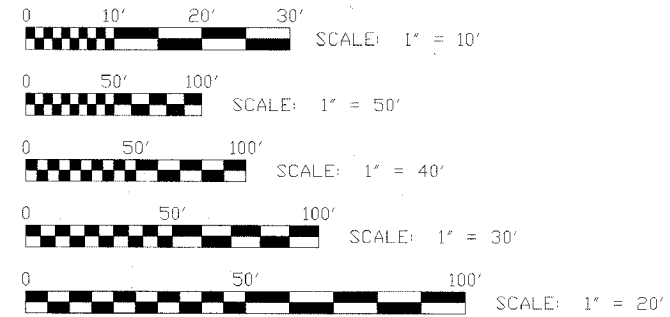
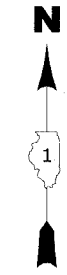
ROUTE NO.	SECTION	COUNTY	TOTAL SHEETS	SHEET NO.
X	06-00121-00-LS	COOK	15	1
ILLINOIS PROJECT		TE-00D1(773)		
VILLAGE SECTION		06-00121-00-LS		
CONTRACT NO. 83927				



LOCATION OF SECTION INDICATED THUS: [Symbol]

LOCATION MAP
TOWNSHIP 39 NORTH, RANGE 12 EAST, PROVIDO TOWNSHIP

PROJECT ENDS
STATION 18+00
BROADWAY AVENUE



FULL SIZE PLANS HAVE BEEN PREPARED USING STANDARD ENGINEERING SCALES. REDUCED SIZED PLANS WILL NOT CONFORM TO STANDARD SCALES. IN MAKING MEASUREMENTS ON REDUCED PLANS, THE ABOVE SCALES MAY BE USED.

CONTRACT NO. 83927

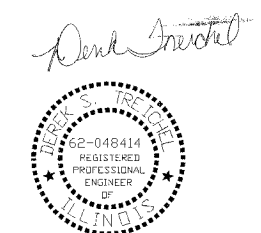
J.U.L.I.E. (800) 892-0123

PROJECT BEGINS
STATION 0+90
BROADWAY AVENUE

MAP SCALE : 1" = 800'

[Symbol] - AREA OF IMPROVEMENT

GROSS LENGTH OF IMPROVEMENT = 1,710 FT. = 0.324 MI.



DATE SIGNED: 04-13-07
LICENSE EXPIRES: 11-30-07

TRAFFIC DATA
2007 ADT = 500
POSTED SPEED LIMIT = 25 MPH
DESIGN SPEED LIMIT = 25 MPH

ILLINOIS DEPARTMENT OF TRANSPORTATION DEPARTMENT OF HIGHWAYS	
APPROVED	<u>April 13 2007</u> <i>Mark J. Quinn</i> VILLAGE OF BROOKFIELD, PRESIDENT
PASSED	<u>MAY 31 2007</u> <i>Christopher Holt</i> DISTRICT 1 ENGINEER OF LOCAL ROADS & STREETS
RELEASING FOR BID BASED ON LIMITED REVIEW	<u>June 1 2007</u> <i>Diane O'Keefe/Cad</i> DEPUTY DIRECTOR OF HIGHWAYS, REGION 1 ENGINEER

(PRINTED BY AUTHORITY OF THE STATE OF ILLINOIS)

Drawing file: W:\Projects\12506335 - Grand Blvd Beautification\Cover.dwg
 Apr 09, 2007 - 2:05pm
 FEDERAL AID DESIGN ENGINEER : JESSICA FELICIANO (847)705-4487
 CONSULTANT : EDWIN HANCOCK ENGINEERING COMPANY
 9933 ROOSEVELT ROAD PHONE : (708)665-0300
 WESTCHESTER, ILLINOIS 60154

INDEX OF SHEETS

SHEET NO.	DESCRIPTION
1	COVER SHEET
2	INDEX OF SHEETS, LEGEND, GENERAL NOTES, & I.D.O.T. STANDARD DRAWINGS
3	SUMMARY OF QUANTITIES
4	TYPICAL SECTIONS
5-8	PLAN SHEETS
9-10	DETAILS
11-12	ENTRANCE SIGN PLANS
13-14	ENTRANCE SIGN DETAILS
15	TRAFFIC CONTROL AND PROTECTION FOR SIDE ROADS, INTERSECTIONS, AND DRIVEWAYS

STANDARDS

ANY REFERENCE TO STANDARDS THROUGHOUT THE PLANS OR SPECIAL PROVISIONS SHALL BE INTERPRETED TO BE THE LATEST STANDARD OF THE ILLINOIS DEPARTMENT OF TRANSPORTATION AS SHOWN ON THE INDEX OF SHEETS IN THE PLANS.

UNDERGROUND UTILITIES

BEFORE STARTING ANY EXCAVATION, THE CONTRACTOR SHALL CALL "JULIE" AT 800-892-0123 FOR FIELD LOCATIONS OF BURIED ELECTRICAL, TELEPHONE AND GAS FACILITIES. (48 HOURS NOTIFICATION IS REQUIRED).

THE LOCATIONS OF THE UNDERGROUND UTILITIES IF SHOWN ON THE PLANS HAVE BEEN OBTAINED BY FIELD SURVEYS AND SEARCHES OF AVAILABLE RECORDS. IT IS BELIEVED THAT THE DATA IS ESSENTIALLY CORRECT, BUT THE VILLAGE OF BROOKFIELD, THE ILLINOIS DEPARTMENT OF TRANSPORTATION AND/OR OTHER OFFICES AND AGENCIES ASSOCIATED WITH THE DEVELOPMENT OF THESE PLANS DO NOT GUARANTEE THEIR ACCURACY OR COMPLETENESS OF THIS INFORMATION. THE CONTRACTOR WILL BE REQUIRED TO VERIFY THE EXACT LOCATION OF EACH FACILITY WITH THE RESPECTIVE UTILITY COMPANY, AND SHALL TAKE DUE CARE IN ALL PHASES OF THE CONSTRUCTION TO PROTECT ANY SUCH FACILITIES WHICH MAY BE AFFECTED BY THE WORK. ANY DAMAGE TO EXISTING UTILITIES SHALL BE REPAIRED AT THE CONTRACTOR'S EXPENSE.

THE CONTRACTOR SHALL COORDINATE CONSTRUCTION ACTIVITIES WITH UTILITY COMPANIES AND THE VILLAGE OF BROOKFIELD.

GENERAL NOTES

FIELD OFFICE

THE CONTRACTOR WILL NOT BE REQUIRED TO SET UP A FIELD OFFICE

BARRICADES

THE CONTRACTOR SHALL PROVIDE AND INSTALL TWO (2) WEIGHTED SANDBAGS ON EACH TYPE I OR TYPE II BARRICADE USED, ONE (1) WEIGHTED SANDBAG ACROSS EACH BOTTOM RAIL

SAW CUTTING

THE CONTRACTOR SHALL SAW CUT ASPHALT PAVEMENT AND DRIVEWAY PAVEMENT AS INDICATED ON THE PLANS TO SEPARATE THE EXISTING PAVEMENT TO BE REMOVED BY APPROVED MEANS OR AN APPROVED CONCRETE SAW TO A DEPTH AS DIRECTED BY THE ENGINEER. SUITABLE GUIDELINES OR DEVICES SHALL BE USED TO ASSURE CUTTING A NEAT, STRAIGHT LINE AS SHOWN ON THE PLANS. CARE SHALL BE TAKEN BY THE CONTRACTOR AS NOT TO DAMAGE THE REMAINING PAVEMENT DIRECTLY ADJACENT TO THE PAVEMENT TO BE REMOVED. ANY DAMAGE TO THE EXISTING PAVEMENT RESULTING FROM PAVEMENT REMOVAL OPERATIONS SHALL BE REPAIRED AT THE CONTRACTOR'S EXPENSE. THE COST OF SAW CUTTING SHALL BE INCLUDED IN THE ITEM BEING REMOVED.

ROUTE NO.	SECTION	COUNTY	TOTAL SHEETS	SHEET NO.
X	06-00121-00-LS	COOK	15	2
ILLINOIS PROJECT		TE-0001(773)		
VILLAGE SECTION		06-00121-00-LS		
CONTRACT NO.		83927		

LEGEND OF SYMBOLS

(TO BE USED IN CONJUNCTION WITH I.D.O.T. STANDARD 000001-04)

EXISTING	PROPOSED	DESCRIPTION
		GAS LINE
		TELEPHONE LINE
		SANITARY SEWER
		WATER MAIN
		STORM SEWER
		COMBINATION SEWER
		FIRE HYDRANT
		POWER POLE
		WATER MAIN VALVE VAULT
		WATER MAIN VALVE BOX
		MANHOLE
		INLET
		BUFFALO BOX
		CATCH BASIN
		RIM ELEVATION (SANITARY) INVERT ELEVATION
		RIM ELEVATION (STORM) INVERT ELEVATION
		RIM ELEVATION (WATER MAIN) TOP OF WATER MAIN
		ELEVATION
		PROPOSED CONCRETE PAVEMENT, SIDEWALK, OR DRIVEWAY
		PROPOSED BITUMINOUS SURFACE COURSE, BITUMINOUS DRIVEWAYS, OR INCIDENTAL BITUMINOUS SURFACING

I.D.O.T. STANDARD DRAWINGS

STANDARD NO.	TITLE OR DESCRIPTION
000001-04	STANDARD SYMBOLS, ABBREVIATIONS AND PATTERNS
606001-03	CONCRETE CURB TYPE B AND COMBINATION CONCRETE CURB AND GUTTER
701501-03	URBAN LANE CLOSURE, 2-LANE, 2-WAY, UNDIVIDED
701701-04	URBAN LANE CLOSURE MULTILANE INTERSECTION
701801-03	LANE CLOSURE, MULTI-LANE, 1-WAY OR 2-WAY CROSSWALK OR SIDEWALK CLOSURE
702001-06	TRAFFIC CONTROL DEVICES

Drawing file: W:\Projects\12506335 - Grand Blvd Beautification\INDEX.dwg Apr 09, 2007 - 8:57am



◆ Civil Engineers
◆ Municipal Consultants
◆ Established 1911

9933 Roosevelt Road
Westchester, Illinois 60154-2780
Phone: 708/865-0300
Fax: 708/865-1212

**TRANSPORTATION CORRIDOR
BEAUTIFICATION PROJECT
VILLAGE OF BROOKFIELD, ILLINOIS**

**INDEX OF SHEETS, LEGEND
OF SYMBOLS, GENERAL NOTES,
& I.D.O.T. STANDARD DRAWINGS**

SCALE:	NONE	SHEET	2
DRAWN BY:	LEV/MK/ECW/TSG		
BOOK NO.:	SDR33		
DATE:	2-9-07		
E.H.E. NO.:	125-06-33580		
REVISION:			15

SUMMARY OF QUANTITIES

CODE	PAY ITEM	UNIT	TOTAL	Y003
			QUANTITY	80% FEDERAL 20 % LOCAL
20100110	TREE REMOVAL (6 TO 15 INCH DIAMETER)	UNIT	100	100
20100210	TREE REMOVAL (OVER 15 INCH DIAMETER)	UNIT	20	20
20200100	EARTH EXCAVATION	CUYD	400	400
* 25000400	NITROGEN FERTILIZER NUTRIENT	POUND	5	5
* 25000500	PHOSPHOROUS FERTILIZER NUTRIENT	POUND	5	5
* 25000600	POTASSIUM FERTILIZER NUTRIENT	POUND	5	5
* 25200100	SODDING	SQYD	400	400
42101300	PROTECTIVE COAT	SQYD	750	750
42300300	PORTLAND CEMENT CONCRETE DRIVEWAY PAVEMENT, 7 INCH	SQYD	45	45
42400200	PORTLAND CEMENT CONCRETE SIDEWALK, 5 INCH	SQFT	6,100	6,100
44000200	DRIVEWAY PAVEMENT REMOVAL	SQYD	20	20
44000300	CURB REMOVAL	FOOT	200	200
44000500	COMBINATION CURB AND GUTTER REMOVAL	FOOT	10	10
44000600	SIDEWALK REMOVAL	SQFT	14,000	14,000
60600605	CONCRETE CURB, TYPE B	FOOT	200	200
60603800	COMBINATION CONCRETE CURB AND GUTTER, TYPE B-6.12	FOOT	10	10
67100100	MOBILIZATION	L SUM	1	1
70101800	TRAFFIC CONTROL AND PROTECTION (SPECIAL)	L SUM	1	1
* B2000124	TREE, ACER CAMPESTRE (HEDGE MAPLE), 3" CALIPER, TREE FORM, BALLED AND BURLAPPED	EACH	16	16
* B2001124	TREE, CERCIS CANADENSIS (EASTERN REDBUD), 3" CALIPER, TREE FORM BALLED AND BURLAPPED	EACH	16	16
* B2005720	TREE, PYRUS CALLERYANA CHANTICLEER (CHANTICLEER CALLERY PEAR), 2-1/2" CALIPER, TREE FORM, BALLED AND BURLAPPED	EACH	17	17
* B2006220	TREE, SYRINGA RETICULATA (JAPANESE TREE LILAC), 2-1/2" CALIPER, TREE FORM, BALLED AND BURLAPPED	EACH	16	16
* X0324062	ENTRANCE SIGN	L SUM	2	2
* X0539800	TREE GRATES	EACH	61	61
X2110100	TOPSOIL FURNISH AND PLACE, SPECIAL	CUYD	100	100
XZ191300	AGGREGATE SUBGRADE	CUYD	20	20
XX003059	DECORATIVE BRICK SIDEWALK	SQFT	11,500	11,500
* XX005633	ENTRY SIGNAGE	EACH	2	2
* XX005644	MINOR SIGN COMPLETE	EACH	6	6
* XX005878	CAST IRON TREE GRATES	EACH	1	1
* XX007000	PORTLAND CEMENT CONCRETE BASE COURSE, 3"	SQFT	11,500	11,500
* XX007001	ROOT BARRIER	EACH	63	63

* DENOTES SPECIALTY ITEM

Drawing file: W:\Projects\12506335 - Grand Blvd Beautification\SUMMO1.dwg Apr 09, 2007 - 3:00pm



◆ Civil Engineers
◆ Municipal Consultants
◆ Established 1911

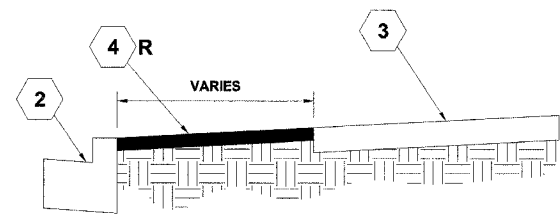
9933 Roosevelt Road
Westchester, Illinois 60154-2780
Phone: 708/865-0300
Fax: 708/865-1212

**TRANSPORTATION CORRIDOR
BEAUTIFICATION PROJECT
VILLAGE OF BROOKFIELD, ILLINOIS**

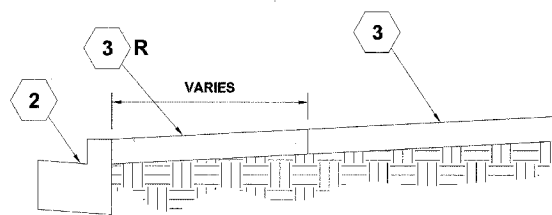
SUMMARY OF QUANTITIES

SCALE:	NONE	SHEET 3 OF 15
DRAWN BY:	LEV/MK/ECW/TSG	
BOOK NO.:	SDR33	
DATE:	2-9-07	
REVISION:	E.H.E. NO.: 125-06-33580	

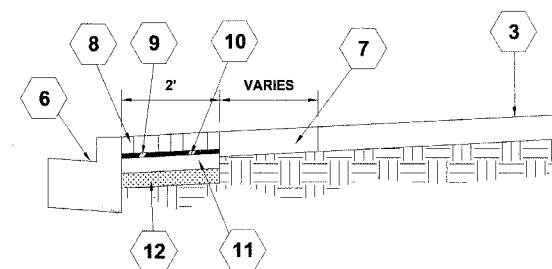
ROUTE NO.	SECTION	COUNTY	TOTAL SHEETS	SHEET NO.
X	06-00121-00-LS	COOK	15	4
ILLINOIS PROJECT TE-00D1(773)				
VILLAGE SECTION 06-00121-00-LS				
CONTRACT NO. 83927				



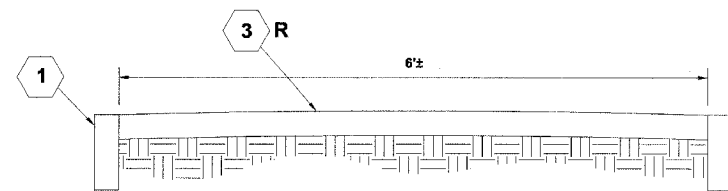
EXISTING TYPICAL CROSS SECTION
GRAND BLVD. & MAPLE AVENUE
 (BITUMINOUS PARKWAY)



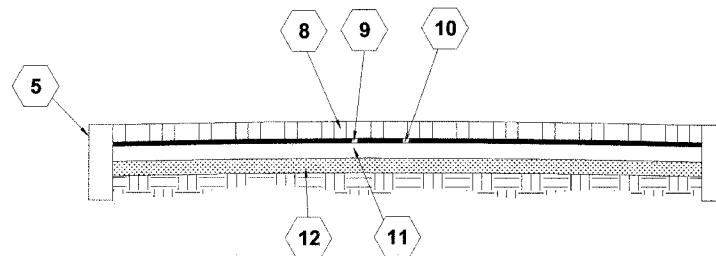
EXISTING TYPICAL CROSS SECTION
GRAND BLVD. & MAPLE AVENUE
 (CONCRETE PARKWAY)



PROPOSED TYPICAL CROSS SECTION
GRAND BLVD. & MAPLE AVENUE



EXISTING TYPICAL CROSS SECTION
 (BROADWAY MEDIAN)



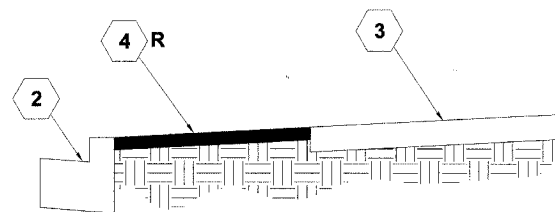
PROPOSED TYPICAL CROSS SECTION
 (BROADWAY MEDIAN)

TYPICAL CROSS SECTION LEGEND
EXISTING

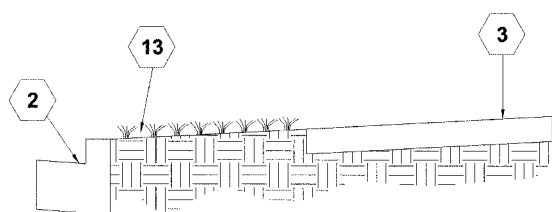
- 1 CONCRETE BARRIER CURB, TYPE B-6
- 2 COMBINATION CONCRETE CURB & GUTTER, TYPE B-6.12
- 3 PORTLAND CEMENT CONCRETE SIDEWALK, 5"±
- 4 ASPHALT SURFACE, 3"±

PROPOSED

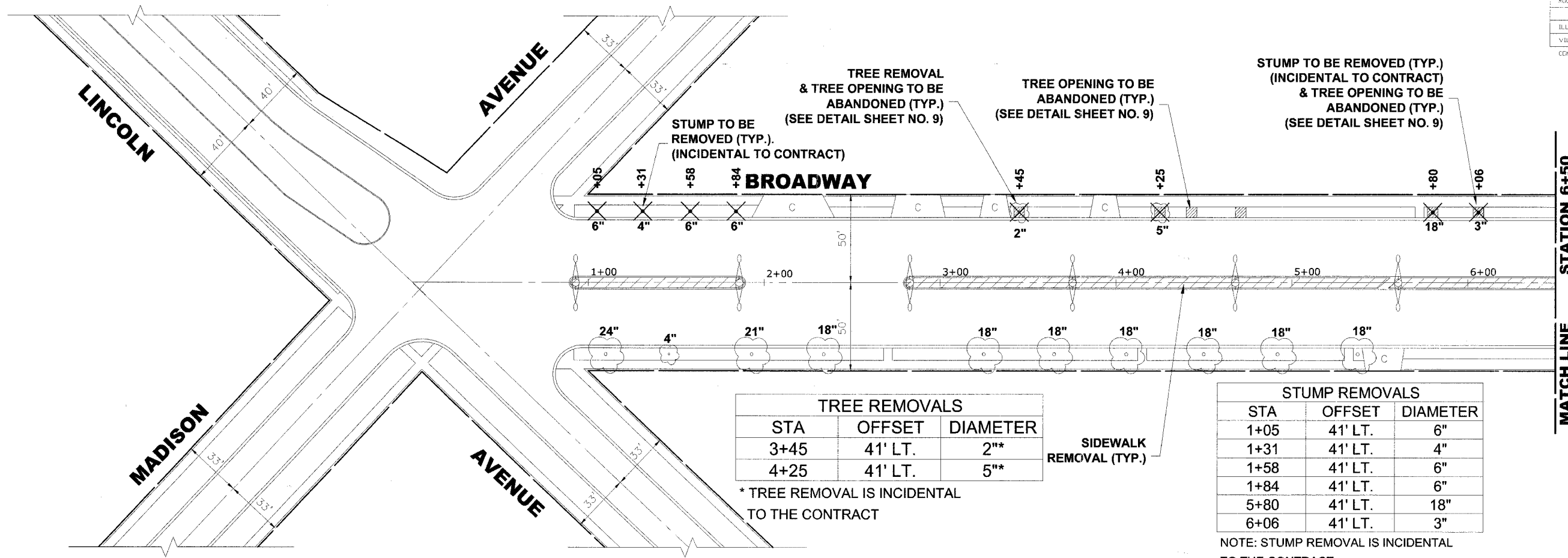
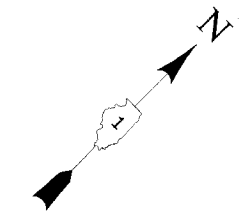
- 5 CONCRETE CURB, TYPE B
(ONLY CERTAIN DETERIORATED SECTIONS TO BE REPLACED)
- 6 COMBINATION CONCRETE CURB & GUTTER, TYPE B-6.12
(ONLY CERTAIN DETERIORATED SECTIONS TO BE REPLACED)
- 7 PORTLAND CEMENT CONCRETE SIDEWALK, 5 INCH
- 8 CLAY BRICK PAVER, 2-1/4"
(INCLUDED IN PAY ITEM FOR DECORATIVE BRICK SIDEWALK)
- 9 SAND CUSHION, 1"
(INCLUDED IN PAY ITEM FOR DECORATIVE BRICK SIDEWALK)
- 10 FILTER FABRIC
(INCLUDED IN PAY ITEM FOR DECORATIVE BRICK SIDEWALK)
- 11 PORTLAND CEMENT CONCRETE BASE COURSE, 3"
- 12 COMPACTED CA-6 STONE BEDDING, 4"
(INCLUDED IN PAY ITEM FOR PORTLAND CEMENT CONCRETE BASE COURSE, 3")
- 13 TOPSOIL FURNISH AND PLACE, SPECAIL & SODDING
(TOPSOIL DEPTH = 8")
- R ITEM TO BE REMOVED



EXISTING TYPICAL CROSS SECTION
MONROE AVENUE



PROPOSED TYPICAL CROSS SECTION
MONROE AVENUE



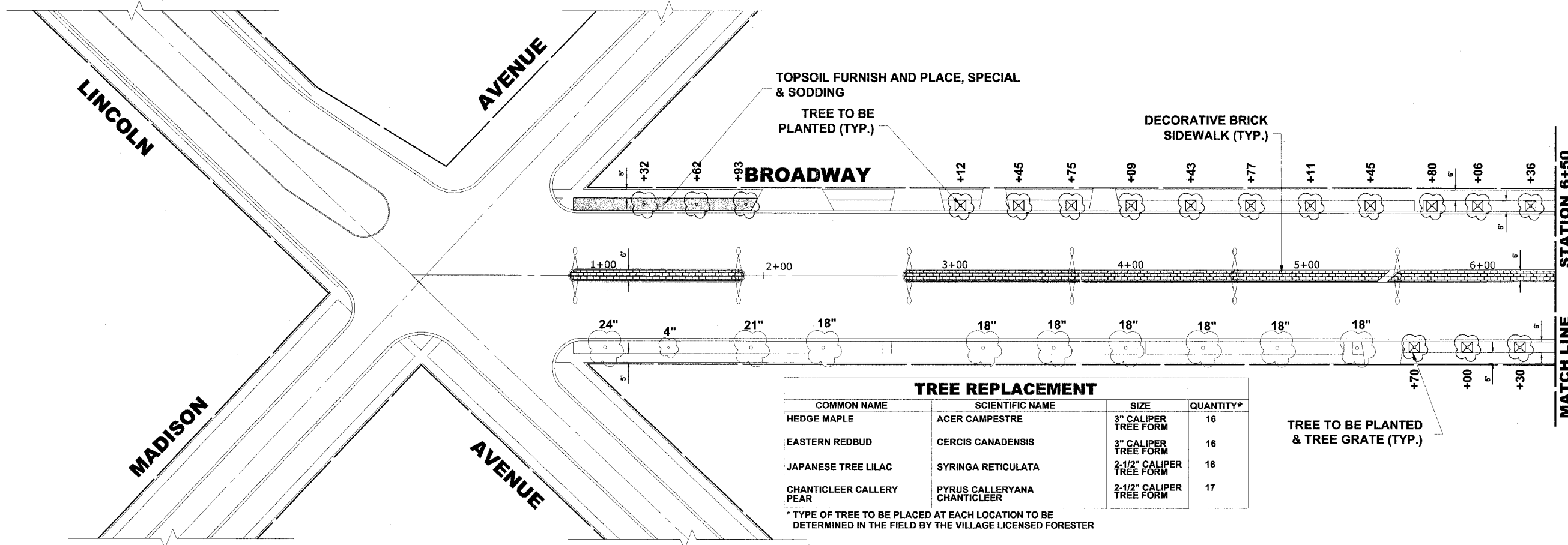
TREE REMOVALS		
STA	OFFSET	DIAMETER
3+45	41' LT.	2"*
4+25	41' LT.	5"*

* TREE REMOVAL IS INCIDENTAL TO THE CONTRACT

STUMP REMOVALS		
STA	OFFSET	DIAMETER
1+05	41' LT.	6"
1+31	41' LT.	4"
1+58	41' LT.	6"
1+84	41' LT.	6"
5+80	41' LT.	18"
6+06	41' LT.	3"

NOTE: STUMP REMOVAL IS INCIDENTAL TO THE CONTRACT

EXISTING TOPOGRAPHY



TREE REPLACEMENT			
COMMON NAME	SCIENTIFIC NAME	SIZE	QUANTITY*
HEDGE MAPLE	ACER CAMPESTRE	3" CALIPER TREE FORM	16
EASTERN REDBUD	CERCIS CANADENSIS	3" CALIPER TREE FORM	16
JAPANESE TREE LILAC	SYRINGA RETICULATA	2-1/2" CALIPER TREE FORM	16
CHANTICLEER CALLERY PEAR	PYRUS CALLERYANA CHANTICLEER	2-1/2" CALIPER TREE FORM	17

* TYPE OF TREE TO BE PLACED AT EACH LOCATION TO BE DETERMINED IN THE FIELD BY THE VILLAGE LICENSED FORESTER

NOTE: ALL TREES BALLED AND BURLAPPED

TREE TO BE PLANTED & TREE GRATE (TYP.)

PROPOSED IMPROVEMENTS

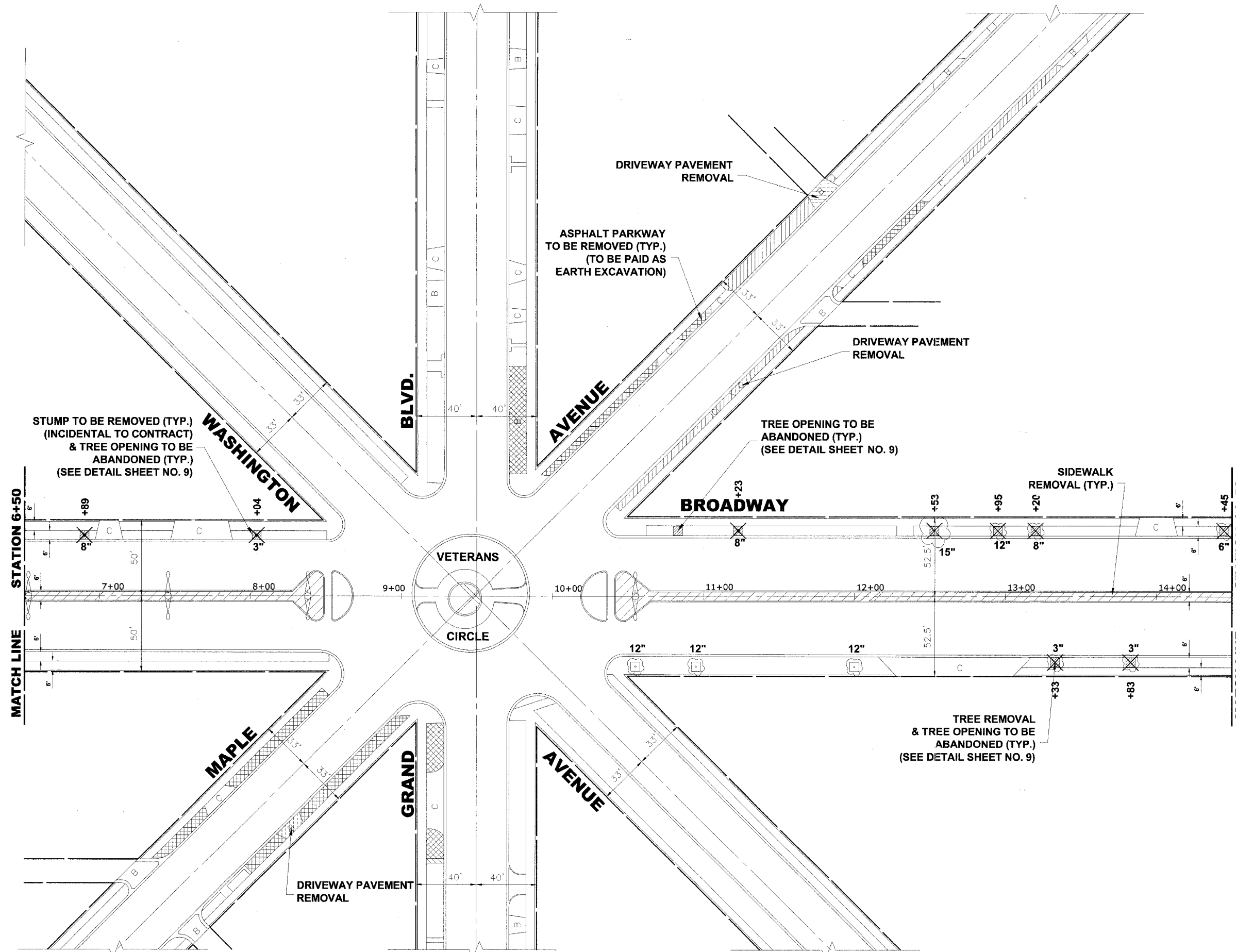
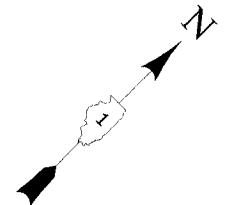
Drawing File: W:\Projects\12506335 - Grand Blvd Beautification\Grand_L_Broadway.dwg Apr 09, 2007 - 3:12pm

	◆ Civil Engineers	9933 Roosevelt Road
	◆ Municipal Consultants	Westchester, Illinois 60154-2780
	◆ Established 1911	Phone: 708/865-0300
		Fax: 708/865-1212

**TRANSPORTATION CORRIDOR
BEAUTIFICATION PROJECT
VILLAGE OF BROOKFIELD, ILLINOIS**

**EXISTING TOPOGRAPHY AND
PROPOSED IMPROVEMENTS**

SCALE:	1" = 30'	SHEET	5
DRAWN BY:	LEVIM/KICWITSG	OF	15
BOOK NO.:	SDR33		
DATE:	2-9-07		
REVISION:		E.H.E. NO.:	125-06-33580



TREE REMOVALS		
STA	OFFSET	DIAMETER
12+53	41' LT.	15"
12+95	41' LT.	12"
13+20	41' LT.	8"
13+33	41' RT.	3"*
13+83	41' RT.	3"*
14+45	41' LT.	6"

* TREE REMOVAL IS INCIDENTAL TO THE CONTRACT

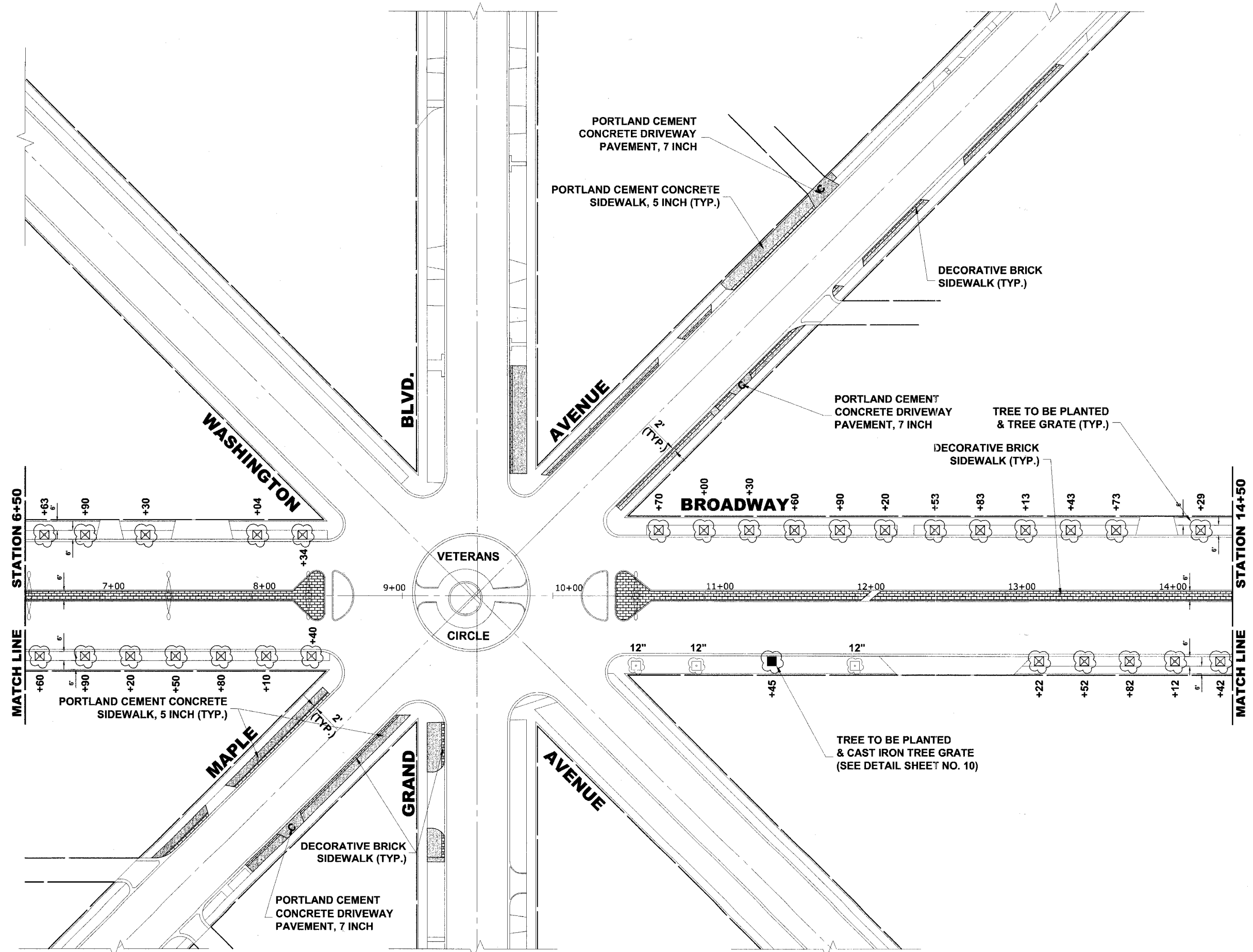
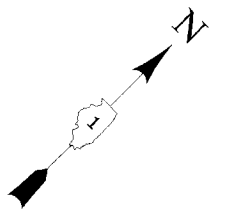
STUMP REMOVALS		
STA	OFFSET	DIAMETER
6+89	41' LT.	8"
8+04	41' LT.	3"
11+23	41' LT.	8"

NOTE: STUMP REMOVAL IS INCIDENTAL TO THE CONTRACT

EXISTING TOPOGRAPHY

Drawing file: W:\Projects\1206533 - Grand Blvd Beautification\Grand Blvd_Broadway.dwg Apr 09, 2007 - 3:12pm

ROUTE NO.	SECTION	COUNTY	TOTAL SHEETS	SHEET NO.
X	06-00121-00-LS	COOK	15	7
ILLINOIS PROJECT TE-0001(773)				
VILLAGE SECTION 06-00121-00-LS				
CONTRACT NO. 63927				



PROPOSED IMPROVEMENT

Drawing file: W:\Projects\12506333 - Grand Blvd Beautification\Grand_Ln_Broadway.dwg Apr 09, 2007 - 3:12pm



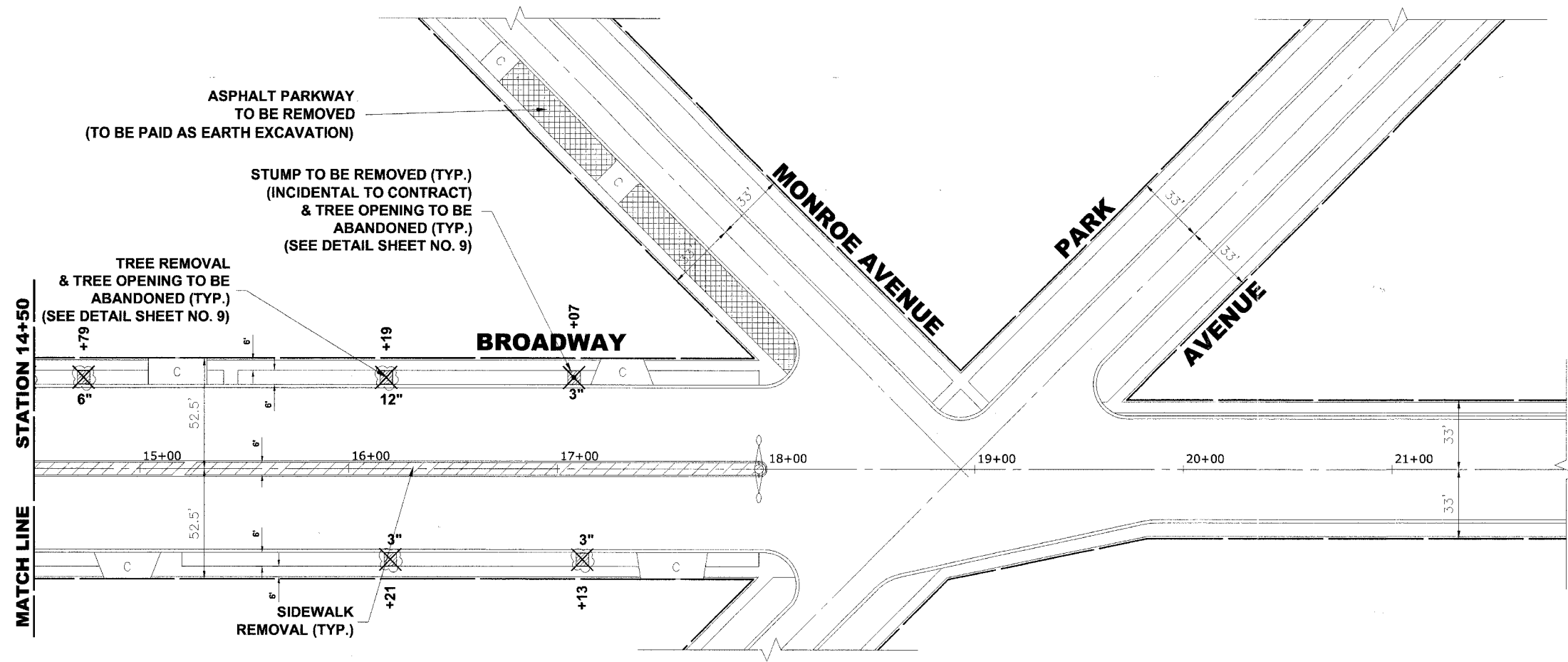
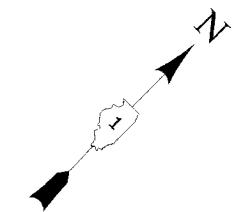
♦ Civil Engineers
 ♦ Municipal Consultants
 ♦ Established 1911

9933 Roosevelt Road
 Westchester, Illinois 60154-2780
 Phone: 708/865-0300
 Fax: 708/865-1212

**TRANSPORTATION CORRIDOR
BEAUTIFICATION PROJECT
VILLAGE OF BROOKFIELD, ILLINOIS**

PROPOSED IMPROVEMENTS

SCALE:	1" = 30'	SHEET 7 OF 15
DRAWN BY:	LEV/MKE/CWTSG	
BOOK NO.:	SDR33	
DATE:	2-9-07	
REVISION:	E.H.E. NO.: 125-06-33580	



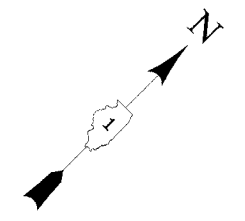
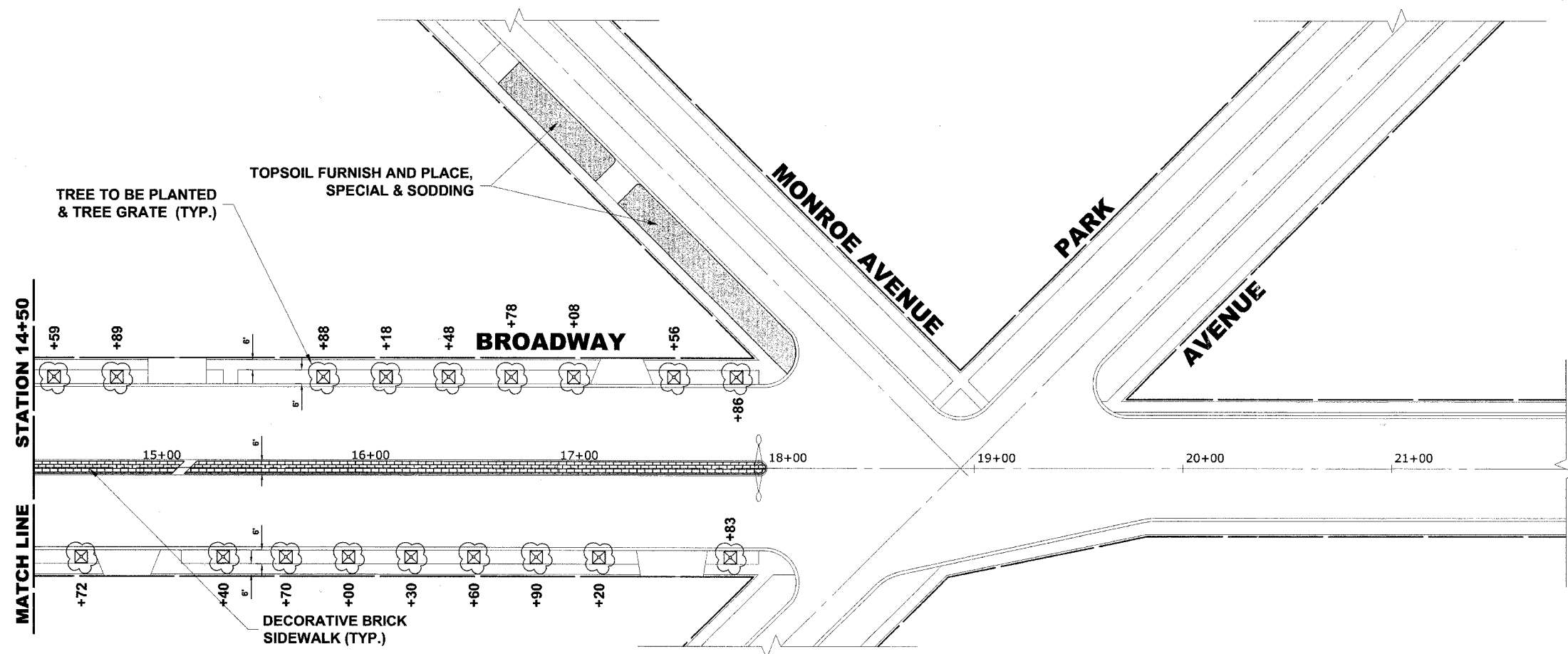
TREE REMOVALS		
STA	OFFSET	DIAMETER
14+79	41' LT.	6"
16+19	41' LT.	12"
16+21	41' RT.	3"*
17+13	41' RT.	3"*

* TREE REMOVAL IS INCIDENTAL TO THE CONTRACT

STUMP REMOVALS		
STA	OFFSET	DIAMETER
17+07	41' LT.	3"

NOTE: STUMP REMOVAL IS INCIDENTAL TO THE CONTRACT

EXISTING TOPOGRAPHY



PROPOSED IMPROVEMENTS

Drawing file: W:\Projects\12506335 - Grand Blvd Beautification\Grand_n_Broadway.dwg Apr 03, 2007 - 3:12pm



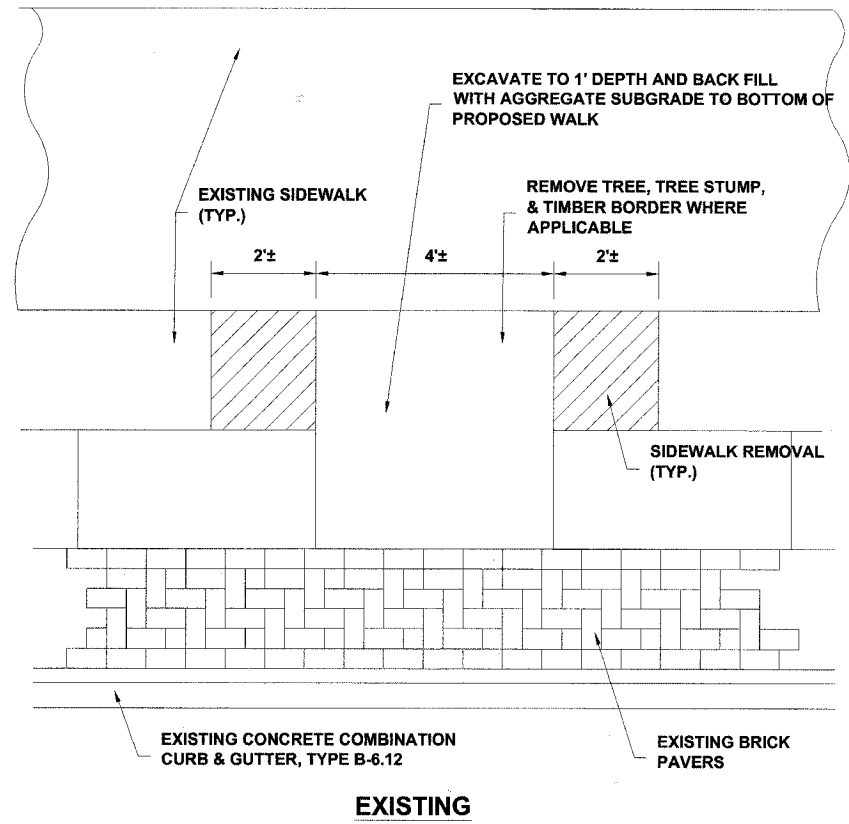
♦ Civil Engineers
 ♦ Municipal Consultants
 ♦ Established 1911
 9933 Roosevelt Road
 Westchester, Illinois 60154-2780
 Phone: 708/865-0300
 Fax: 708/865-1212

**TRANSPORTATION CORRIDOR
BEAUTIFICATION PROJECT
VILLAGE OF BROOKFIELD, ILLINOIS**

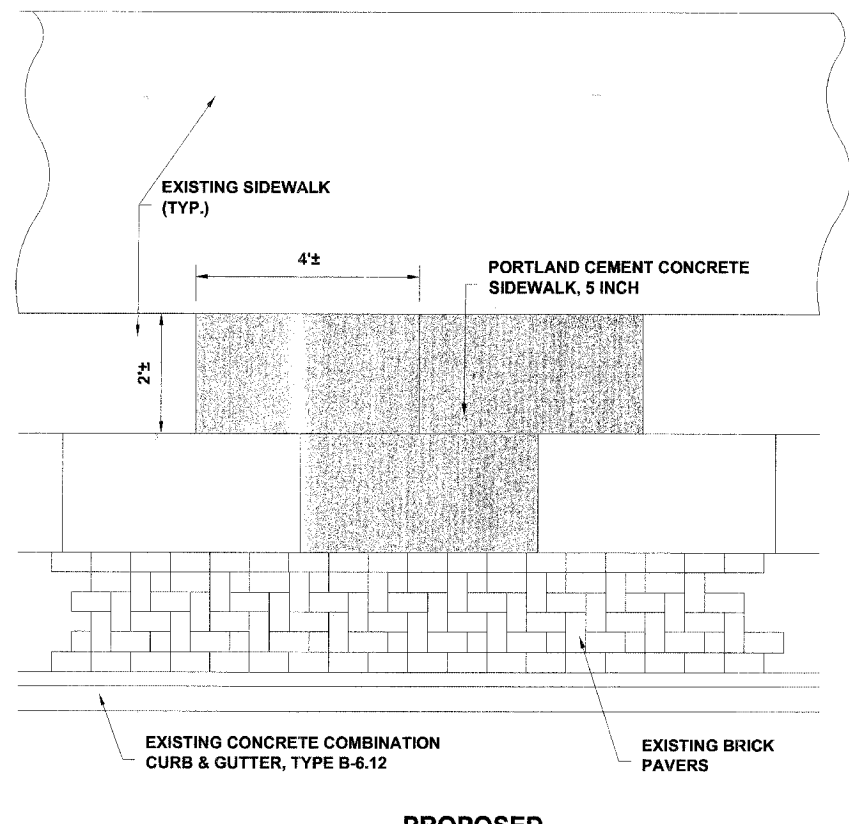
**EXISTING TOPOGRAPHY AND
PROPOSED IMPROVEMENTS**

SCALE:	1" = 30'	SHEET	8
DRAWN BY:	LEV/MK/ECW/TSG		
BOOK NO.:	SDR33	OF	15
DATE:	2-9-07		
REVISION:	E.H.E. NO.: 125-06-33580		

ROUTE NO.	SECTION	COUNTY	TOTAL SHEETS	SHEET NO.
X	06-00121-00-LS	COOK	15	9
ILLINOIS PROJECT	TE-001(773)			
VILLAGE SECTION	06-00121-00-LS			
CONTRACT NO.	83927			

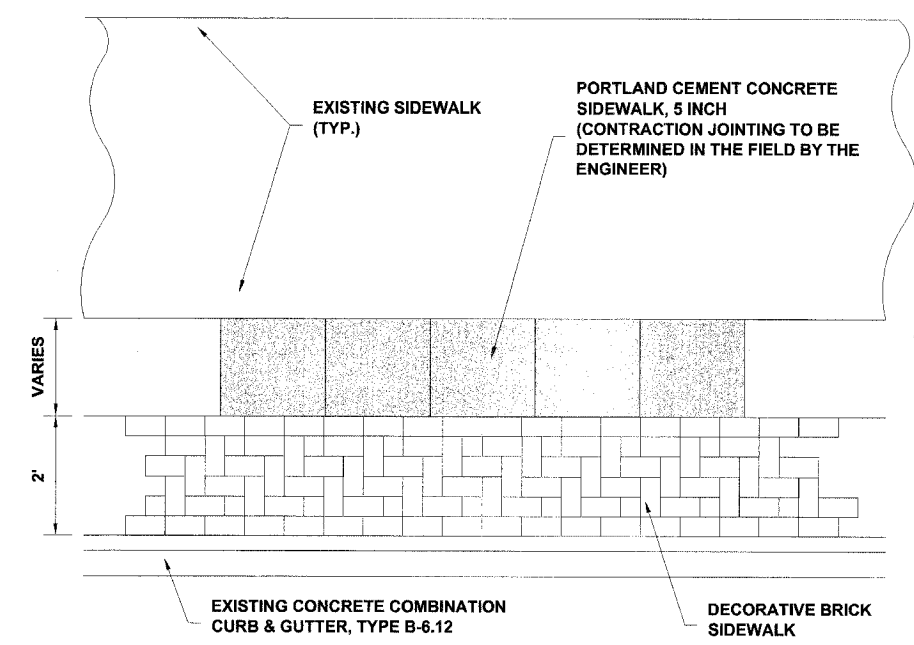


EXISTING

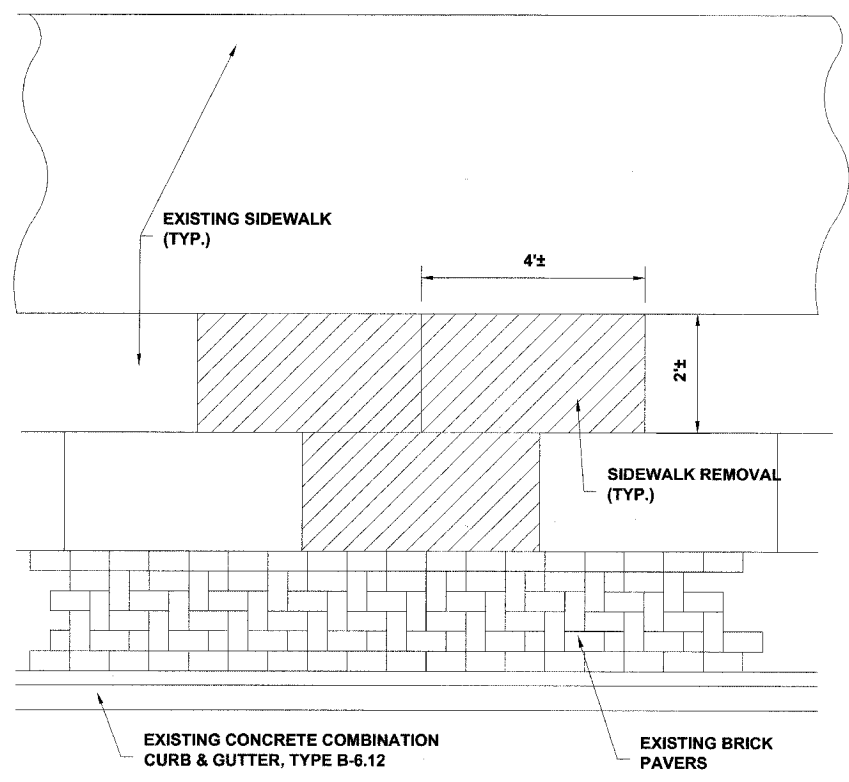


PROPOSED

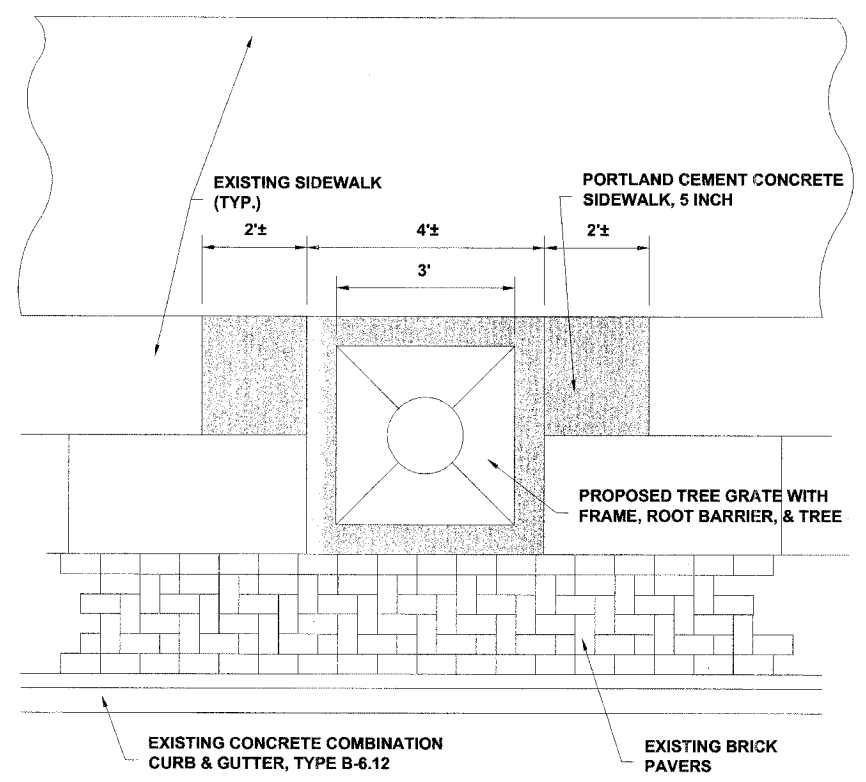
TREE OPENING TO BE ABANDONED
(BROADWAY PARKWAY)



BRICK PATTERN DETAIL
(GRAND BLVD. & MAPLE AVE.)

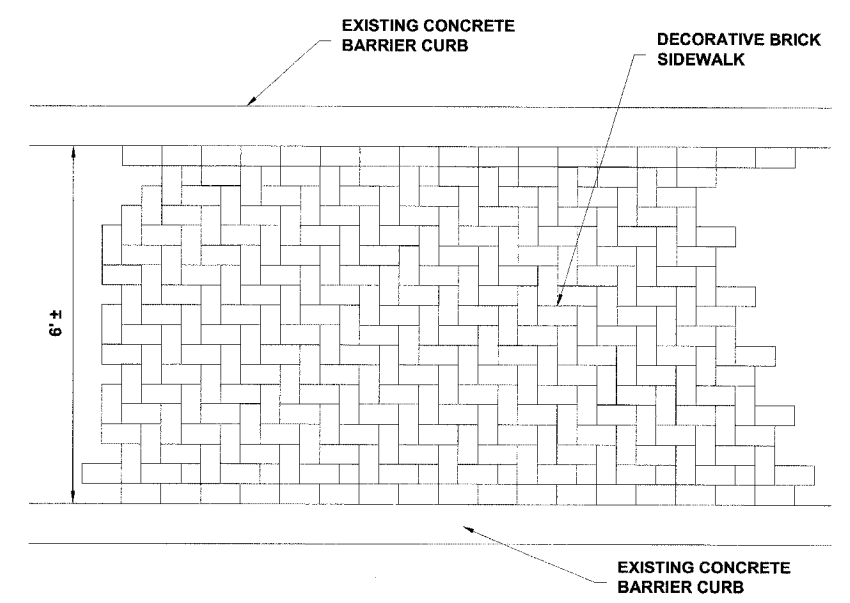


EXISTING



PROPOSED

PROPOSED TREE OPENING
(BROADWAY PARKWAY)



BRICK PATTERN DETAIL
(BROADWAY MEDIAN)

Drawing file: W:\Projects\12506339 - Grand Blvd Beautification\Grand Blvd_Broadway.dwg Apr 09, 2007 - 3:13pm

HANCOCK ENGINEERING ♦ Civil Engineers ♦ Municipal Consultants ♦ Established 1911

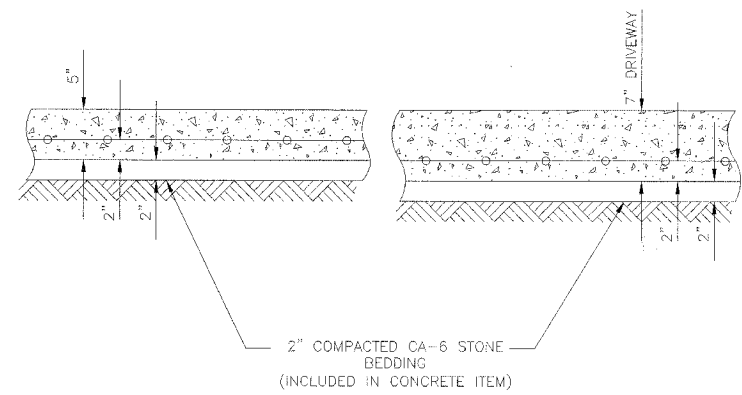
9933 Roosevelt Road
Westchester, Illinois 60154-2780
Phone: 708/865-0300
Fax: 708/865-1212

TRANSPORTATION CORRIDOR BEAUTIFICATION PROJECT
VILLAGE OF BROOKFIELD, ILLINOIS

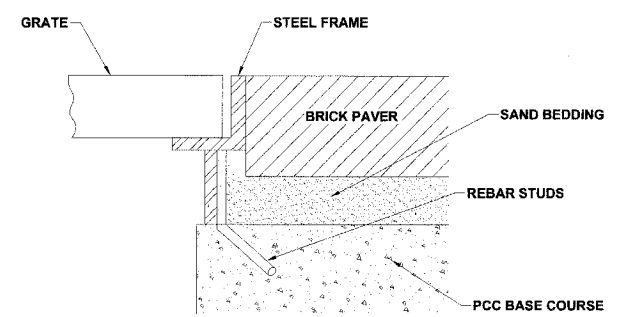
DETAILS

SCALE:	NOT TO SCALE	SHEET	9
DRAWN BY:	LEV/MK/ECW/TSG	OF	15
BOOK NO.:	SDR33		
DATE:	2-9-07		
REVISION:			
E.H.E. NO.:	125-06-33580		

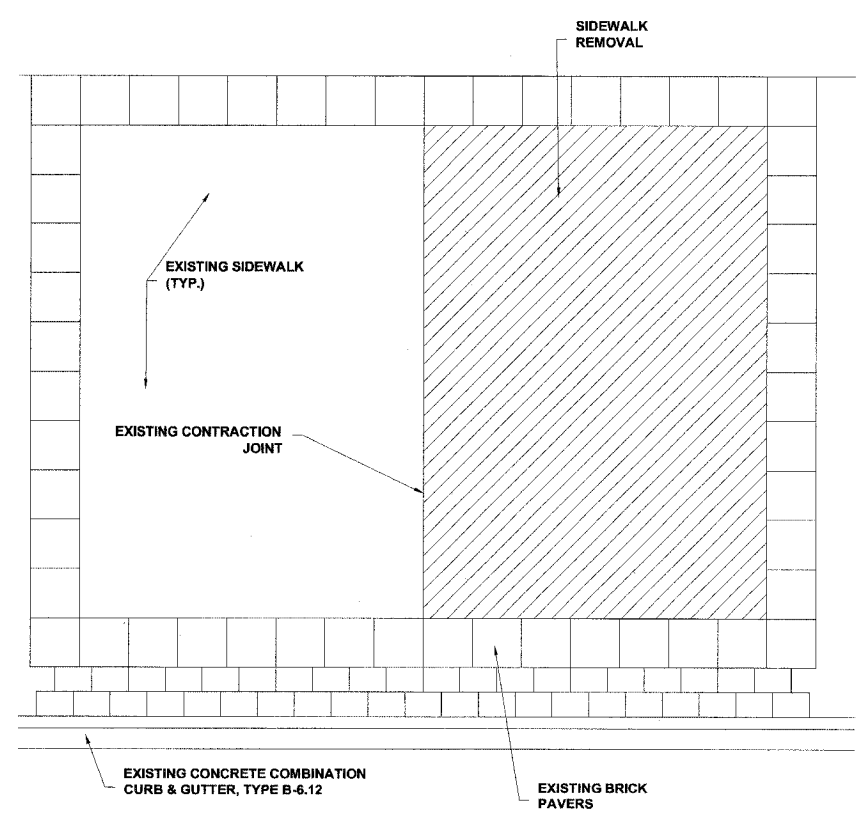
ROUTE NO.	SECTION	COUNTY	TOTAL SHEETS	SHEET NO.
X	06-00121-00-LS	COOK	15	10
ILLINOIS PROJECT		TE-00D1(773)		
VILLAGE SECTION		06-00121-00-LS		
CONTRACT NO.		83927		



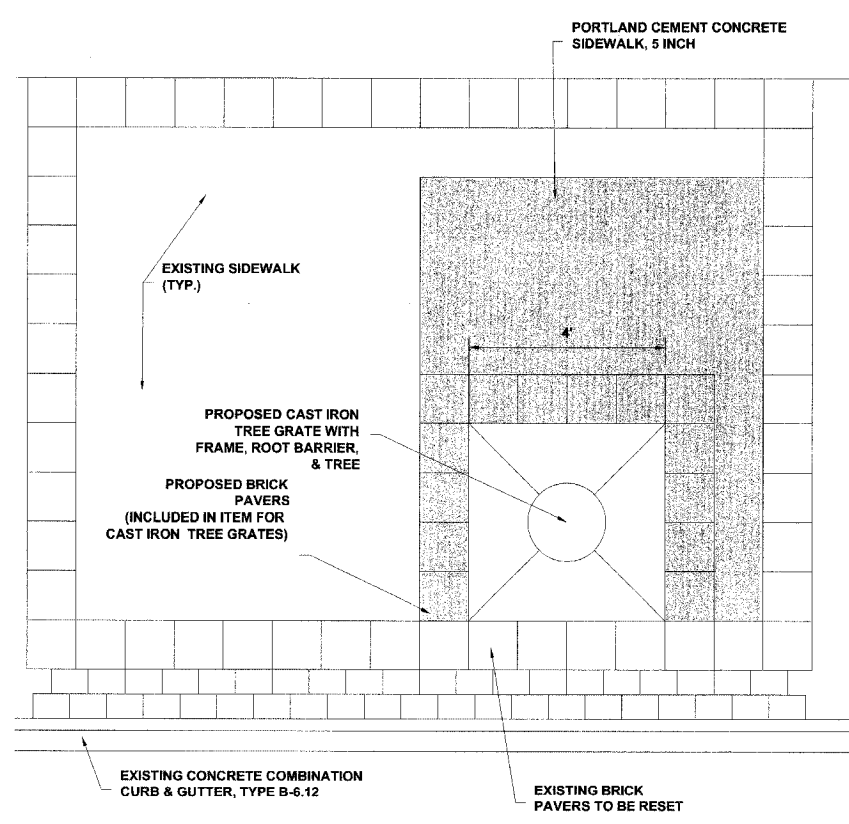
**PORTLAND CEMENT CONCRETE SIDEWALK & PORTLAND CEMENT CONCRETE DRIVEWAY PAVEMENT
TYPICAL DETAILS**



**TREE GRATE FRAME MOUNTING DETAIL
CAST IRON TREE GRATES**

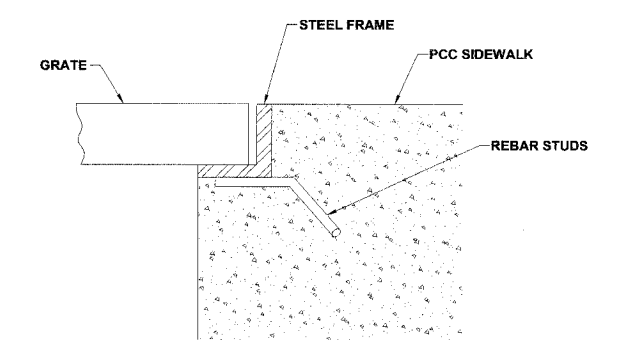


EXISTING



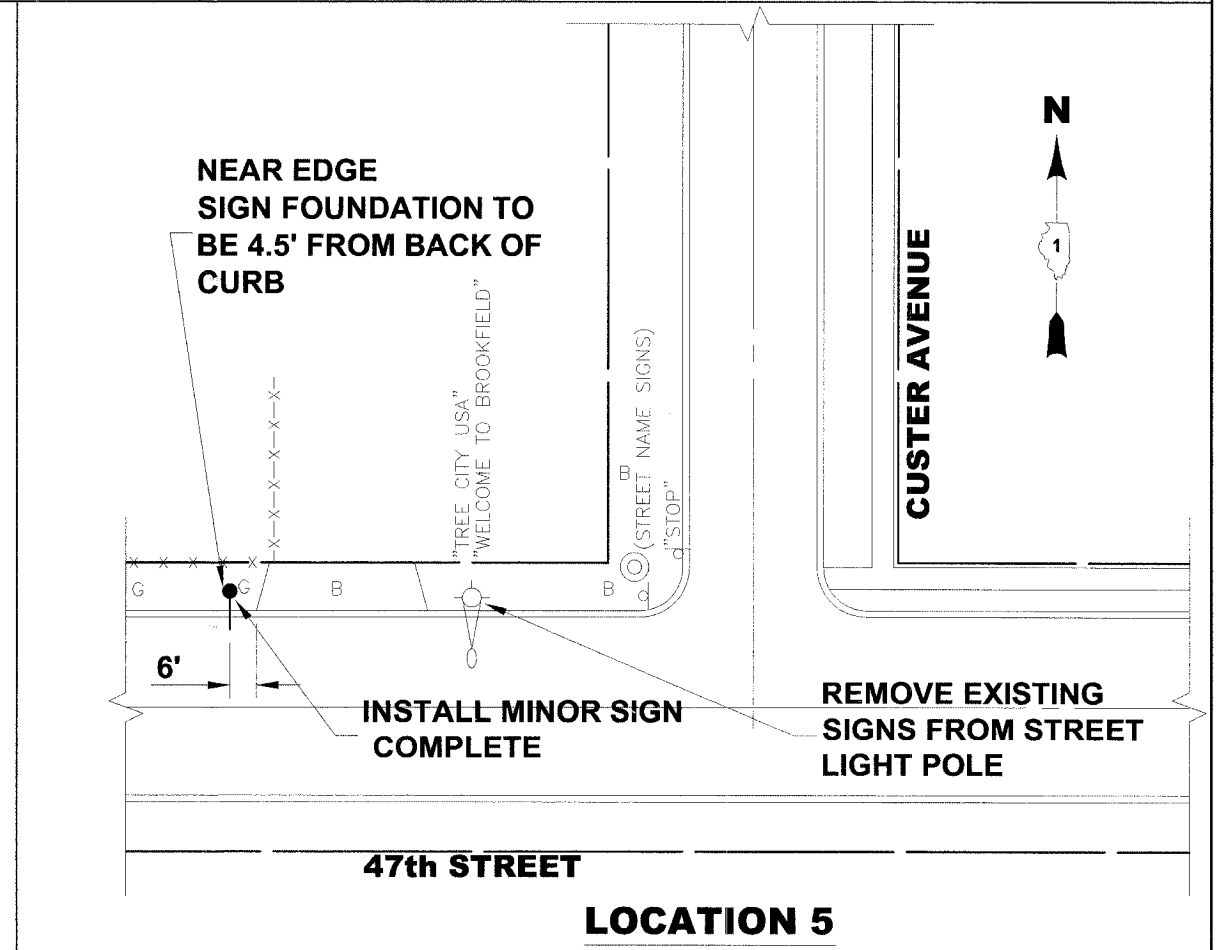
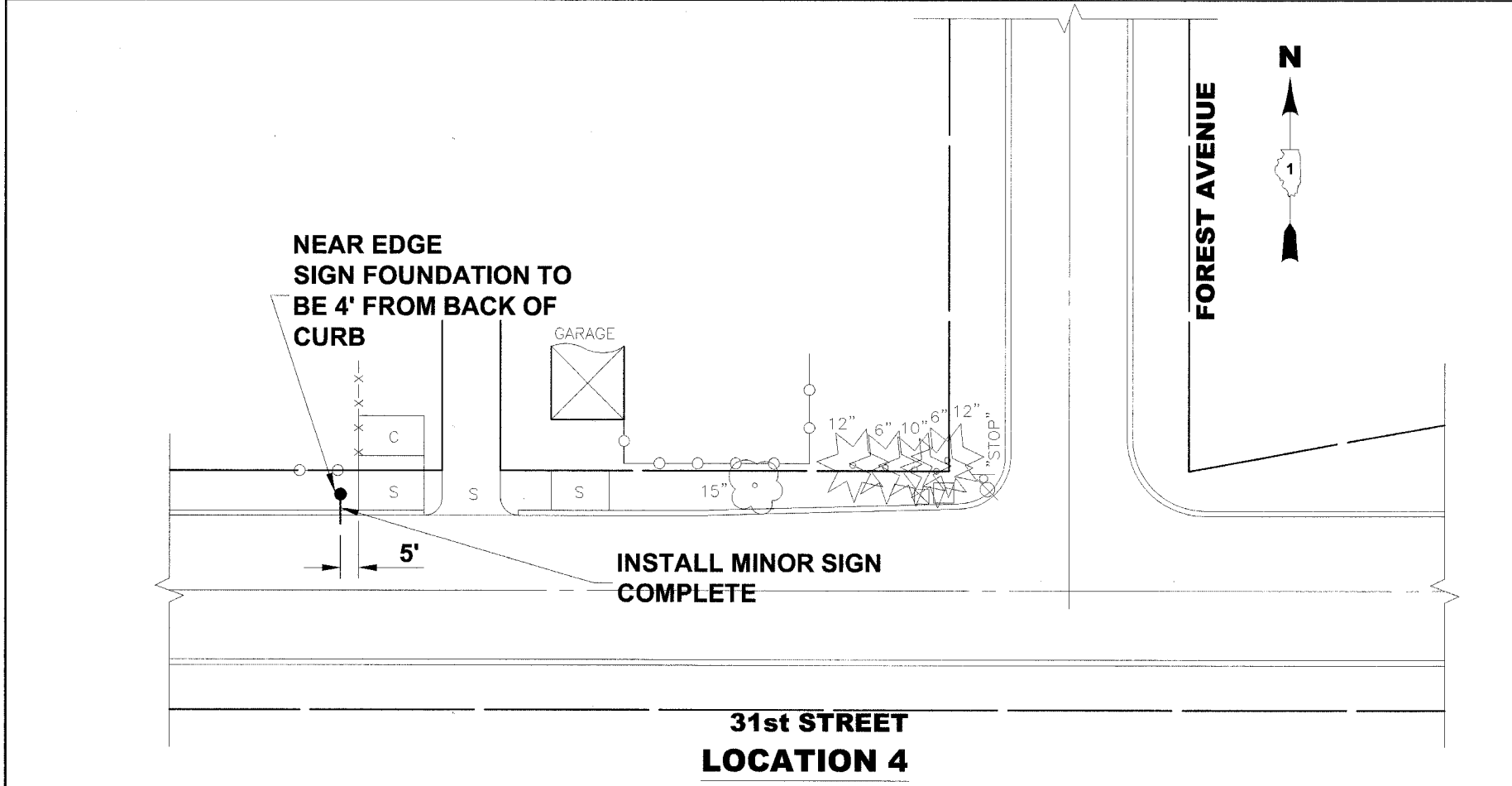
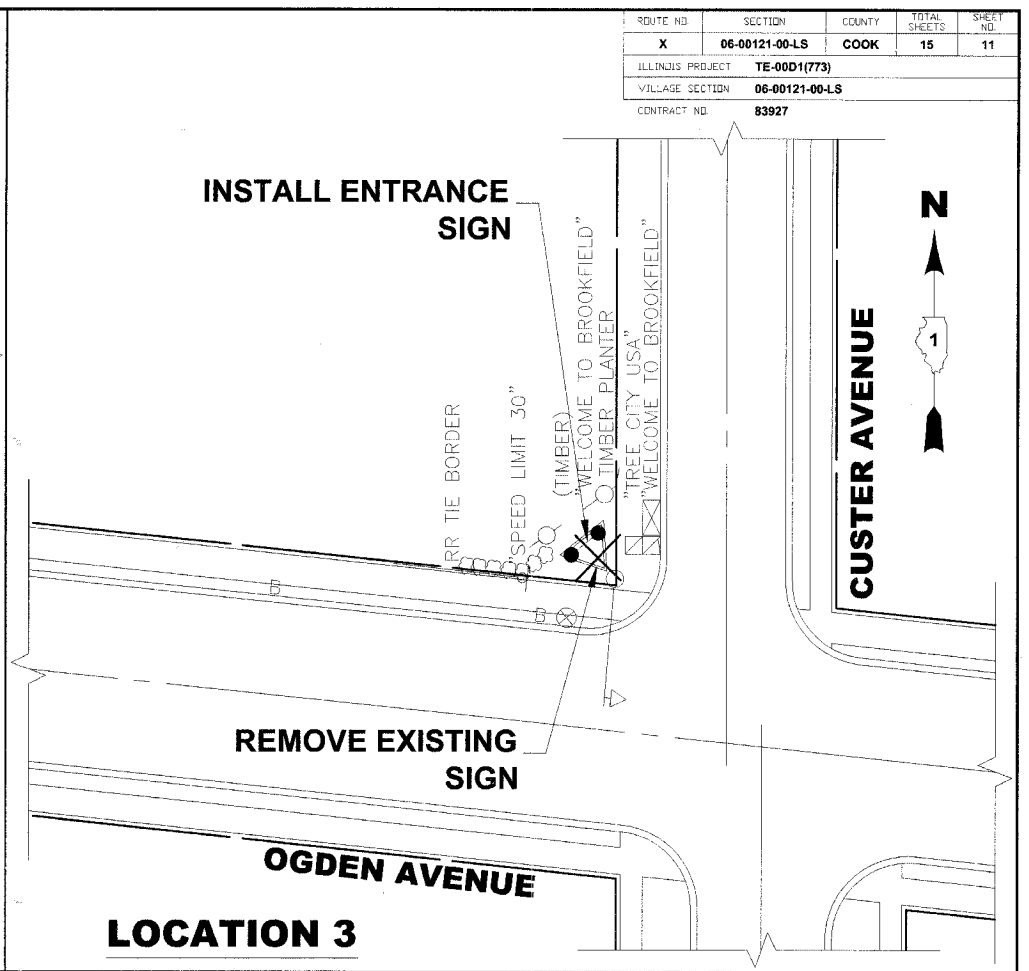
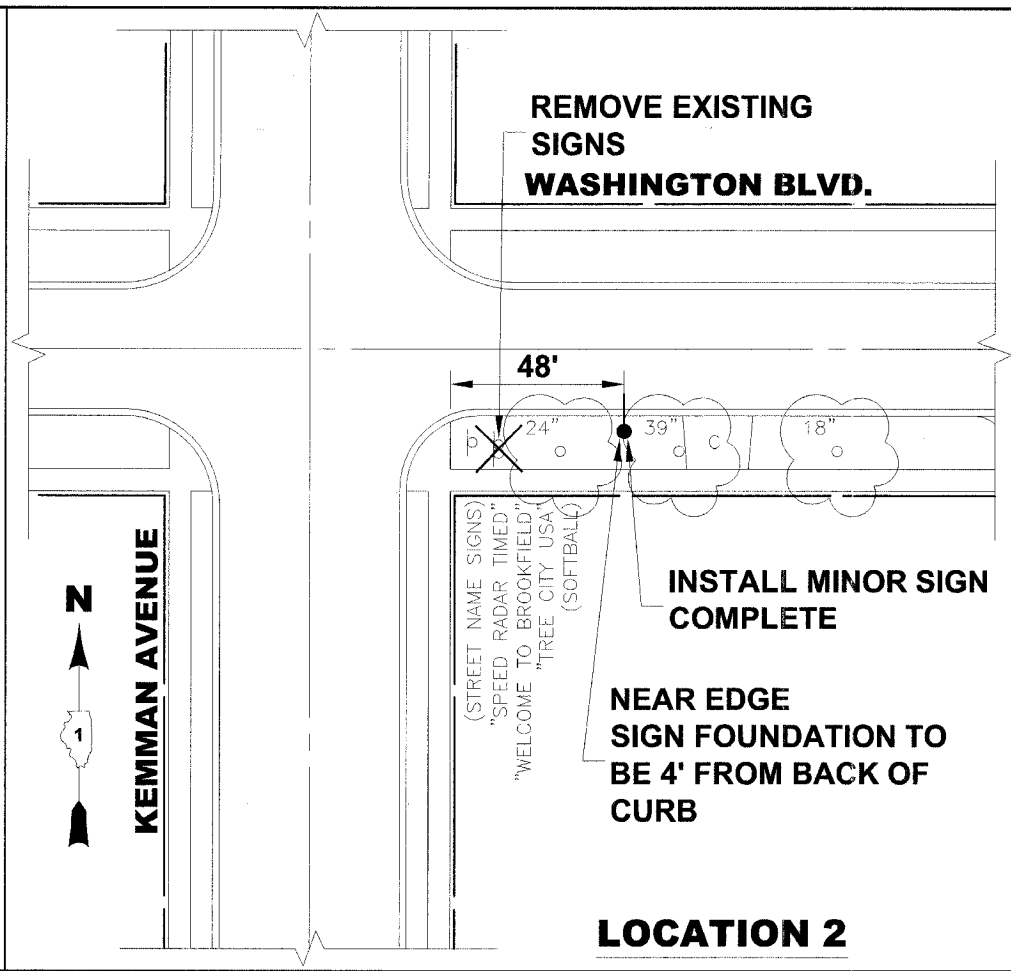
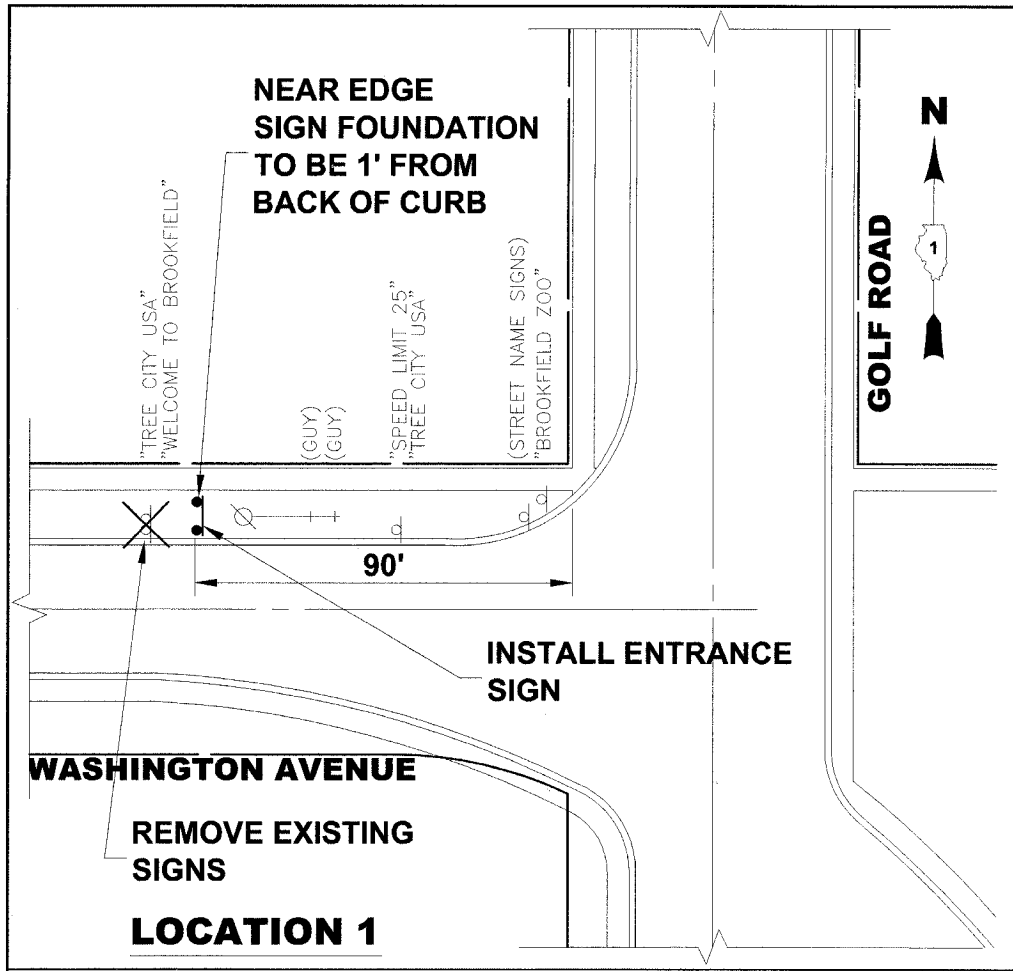
PROPOSED

**PROPOSED TREE OPENING
(BROOKFIELD BANK)**



**TREE GRATE FRAME MOUNTING DETAIL
TREE GRATES**

ROUTE NO.	SECTION	COUNTY	TOTAL SHEETS	SHEET NO.
X	06-00121-00-LS	COOK	15	11
ILLINOIS PROJECT	TE-00D(1773)			
VILLAGE SECTION	06-00121-00-LS			
CONTRACT NO.	83927			



Drawing file: W:\Projects\12506335 - Grand Blvd Beautification\Grand Blvd Beautification.dwg Apr 09, 2007 - 3:16pm

HANCOCK ENGINEERING ♦ Civil Engineers ♦ Municipal Consultants ♦ Established 1911

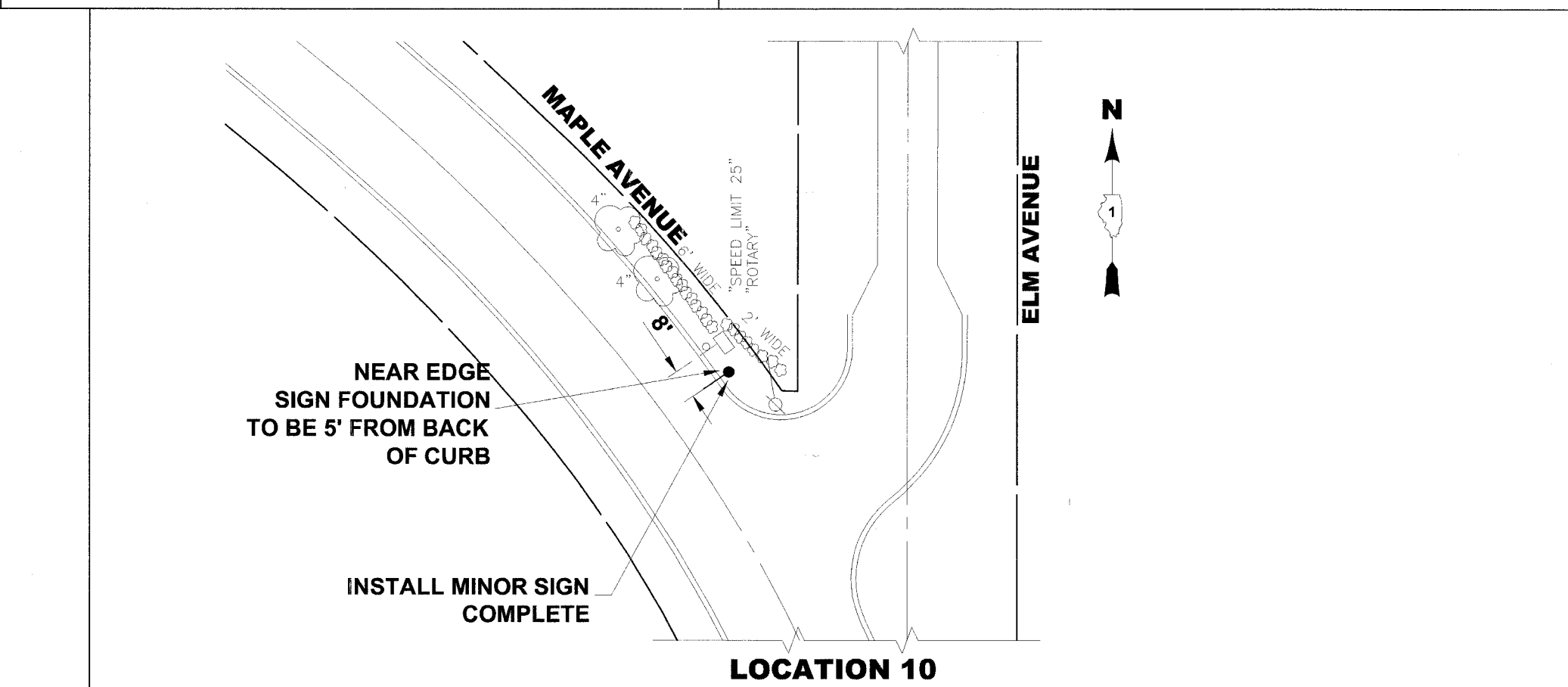
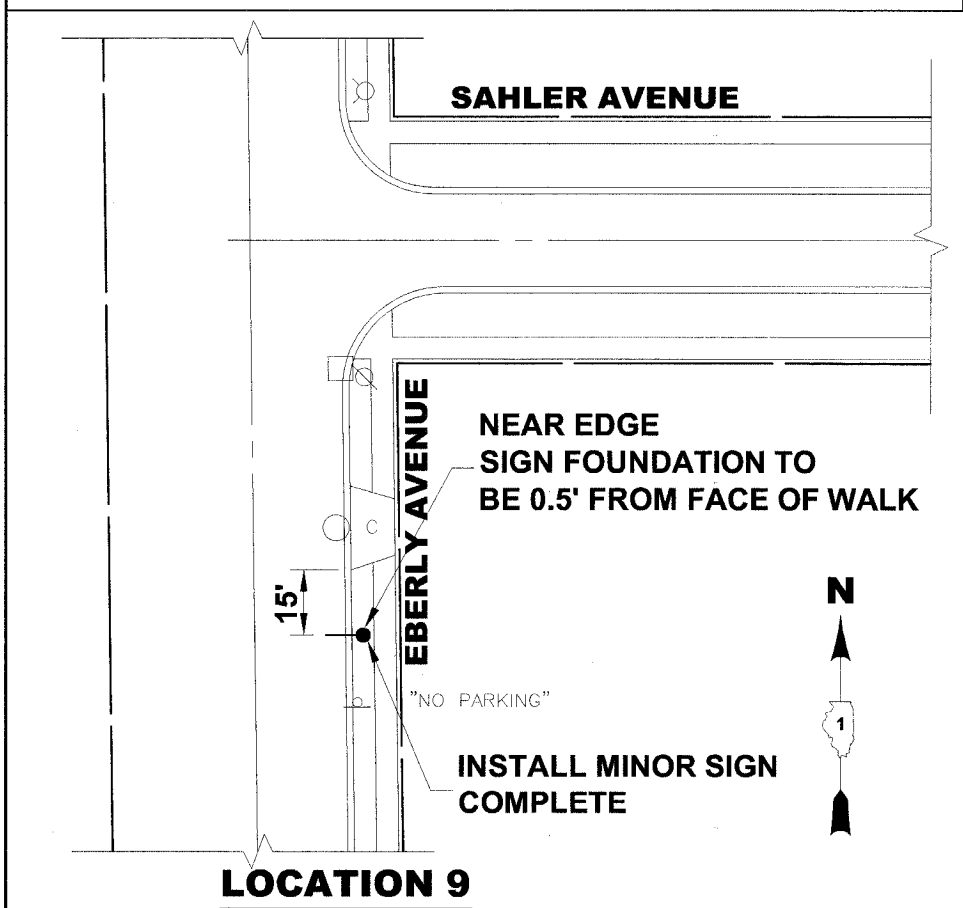
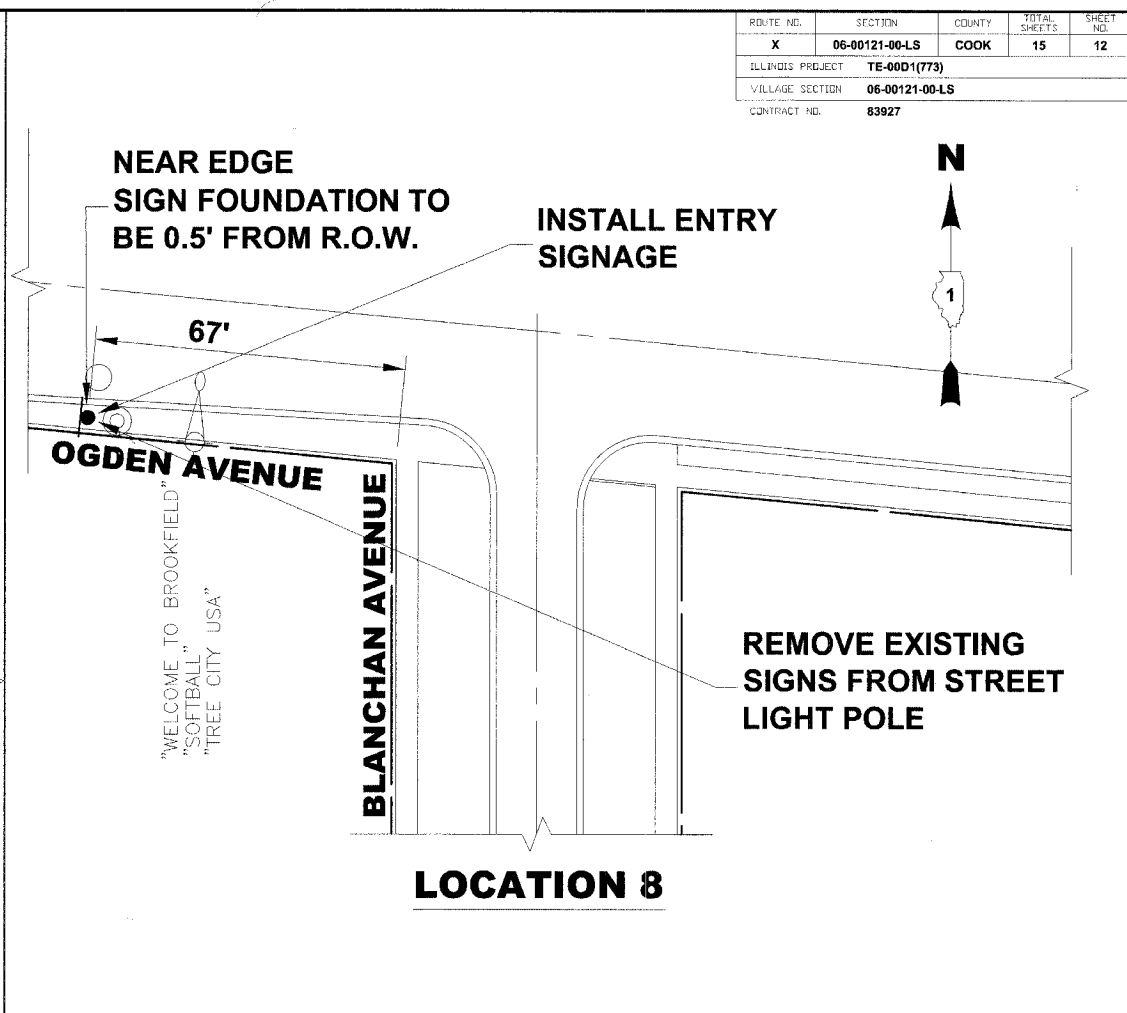
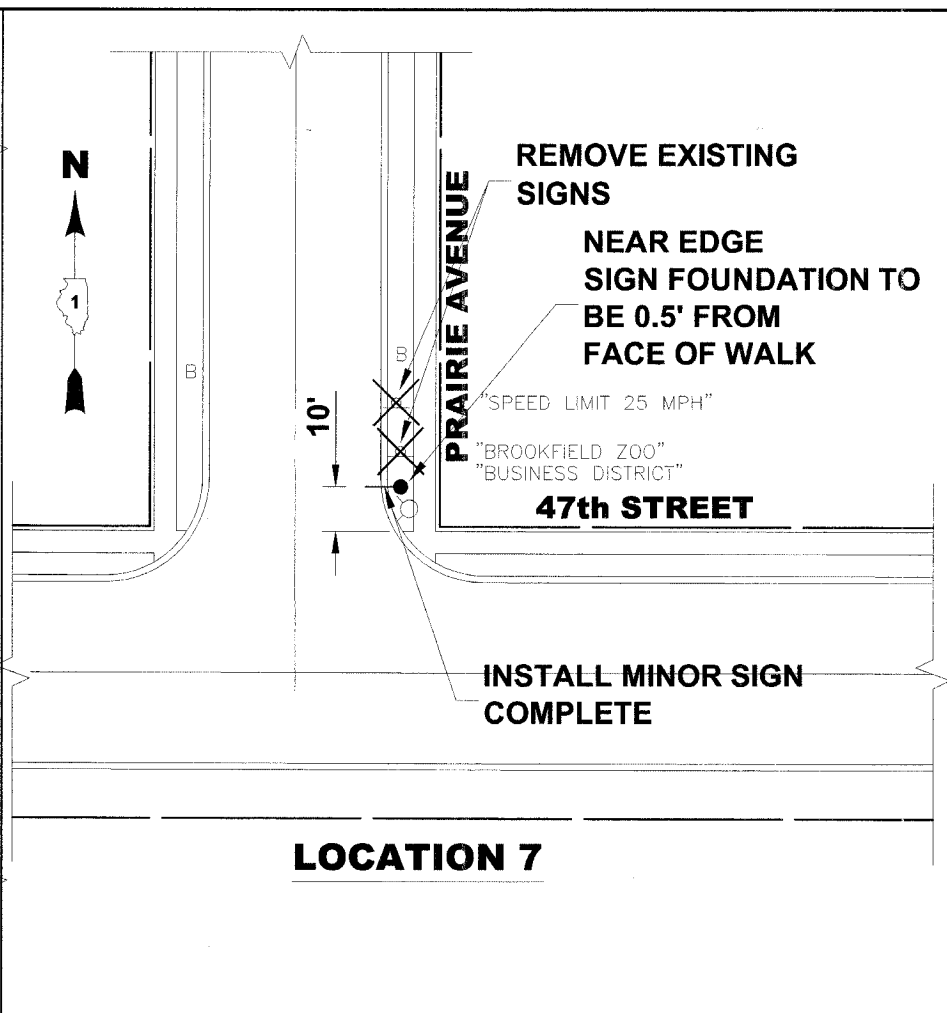
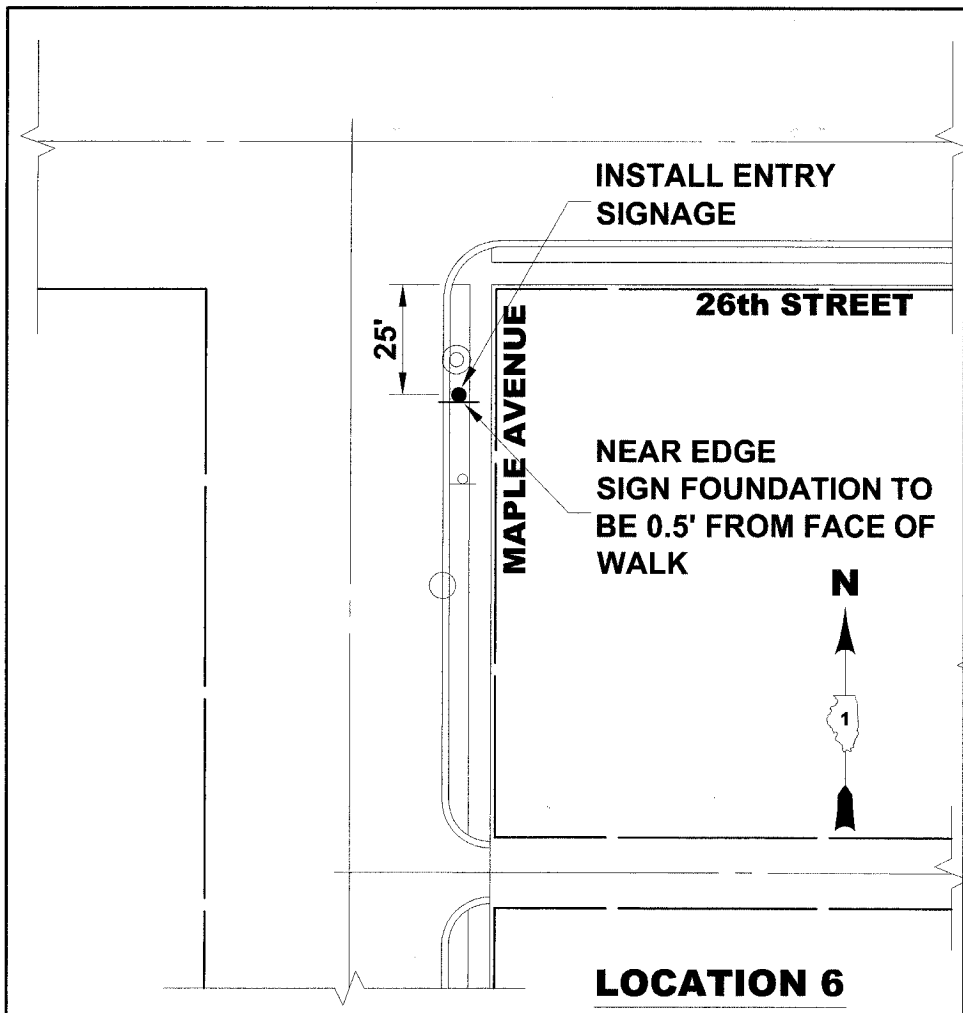
9933 Roosevelt Road
Westchester, Illinois 60154-2780
Phone: 708/865-0300
Fax: 708/865-1212

**TRANSPORTATION CORRIDOR
BEAUTIFICATION PROJECT
VILLAGE OF BROOKFIELD, ILLINOIS**

**ENTRANCE SIGN PLAN
VARIOUS LOCATIONS**

SCALE:	1" = 20'	SHEET	11
DRAWN BY:	LEV/MK/ECW/TSG	OF	15
BOOK NO.:	SDR33		
DATE:	2-9-07		
REVISION:			
E.H.E. NO.:	125-06-33580		

ROUTE NO.	SECTION	COUNTY	TOTAL SHEETS	SHEET NO.
X	06-00121-00-LS	COOK	15	12
ILLINOIS PROJECT		TE-0001(773)		
VILLAGE SECTION		06-00121-00-LS		
CONTRACT NO.		83927		



Drawing file: W:\Projects\12506335 - Grand Blvd Beautification\Grand Blvd Beautification.dwg Apr 06, 2007 - 3:15pm

HANCOCK ENGINEERING

- ◆ Civil Engineers
- ◆ Municipal Consultants
- ◆ Established 1911

9933 Roosevelt Road
Westchester, Illinois 60154-2780
Phone: 708/865-0300
Fax: 708/865-1212

**TRANSPORTATION CORRIDOR
BEAUTIFICATION PROJECT
VILLAGE OF BROOKFIELD, ILLINOIS**

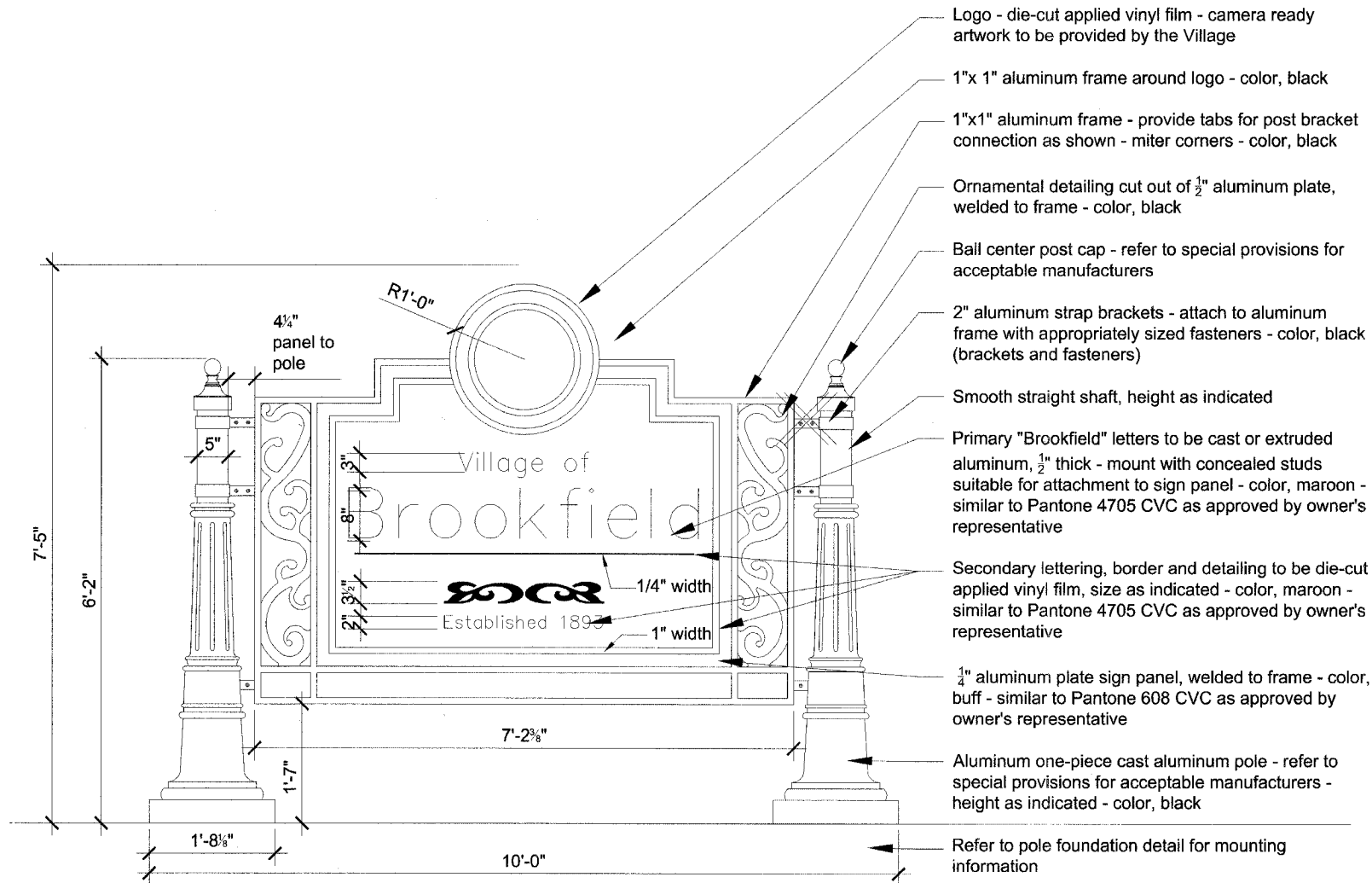
**ENTRANCE SIGN PLAN
VARIOUS LOCATIONS**

SCALE:	1" = 20'	SHEET 12 OF 15
DRAWN BY:	LEV/MK/ECW/TSG	
BOOK NO.:	SDR33	
DATE:	2-9-07	
E.H.E. NO.:	125-06-33580	
REVISION:		

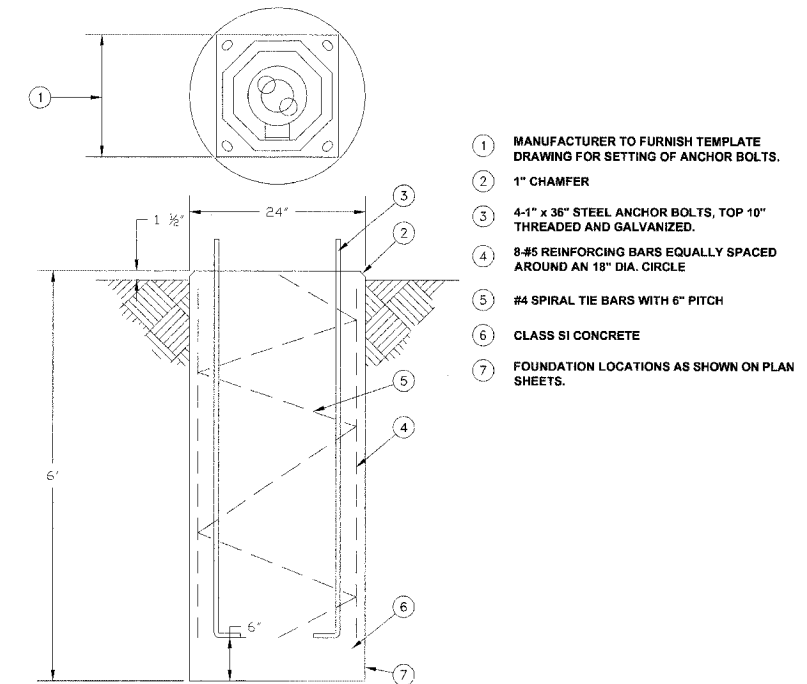
ROUTE NO.	SECTION	COUNTY	TOTAL SHEETS	SHEET NO.
X	06-00121-00-LS	COOK	15	13
ILLINOIS PROJECT		TE-00D1(773)		
VILLAGE SECTION		06-00121-00-LS		
CONTRACT NO.		83927		

Signage General Notes

1. Sign fabricator to submit shop drawings including all materials, connection methods, sizing, text, layout and color designations per details as shown on plans. If modifications are proposed by the fabricator, provide comprehensive explanation to the owner's representative for review. The owner's representative has sole discretion to approve or reject the proposed modifications to achieve a superior product.
2. Sign fabricator to submit manufacturer's product information for poles and vinyl film, color chip samples of all specified colors, and mock-ups of all artwork, logos, graphics and text for approval by the owner's representative prior to fabrication.
3. All aluminum materials to be powder coated per the special provisions, colors as indicated on details.
4. All text to be Goudy Old Style or approved equal as determined by the owner's representative.
5. All work is subject to the standard specifications unless otherwise indicated. Refer to special provisions for additional information, standards and notes.



ENTRANCE SIGN



SIGN POLE FOUNDATION

Drawing file: W:\Projects\12506335 - Grand Blvd Beautification\Sign Details.dwg May 08, 2007 - 10:44am



◆ Civil Engineers
◆ Municipal Consultants
◆ Established 1911

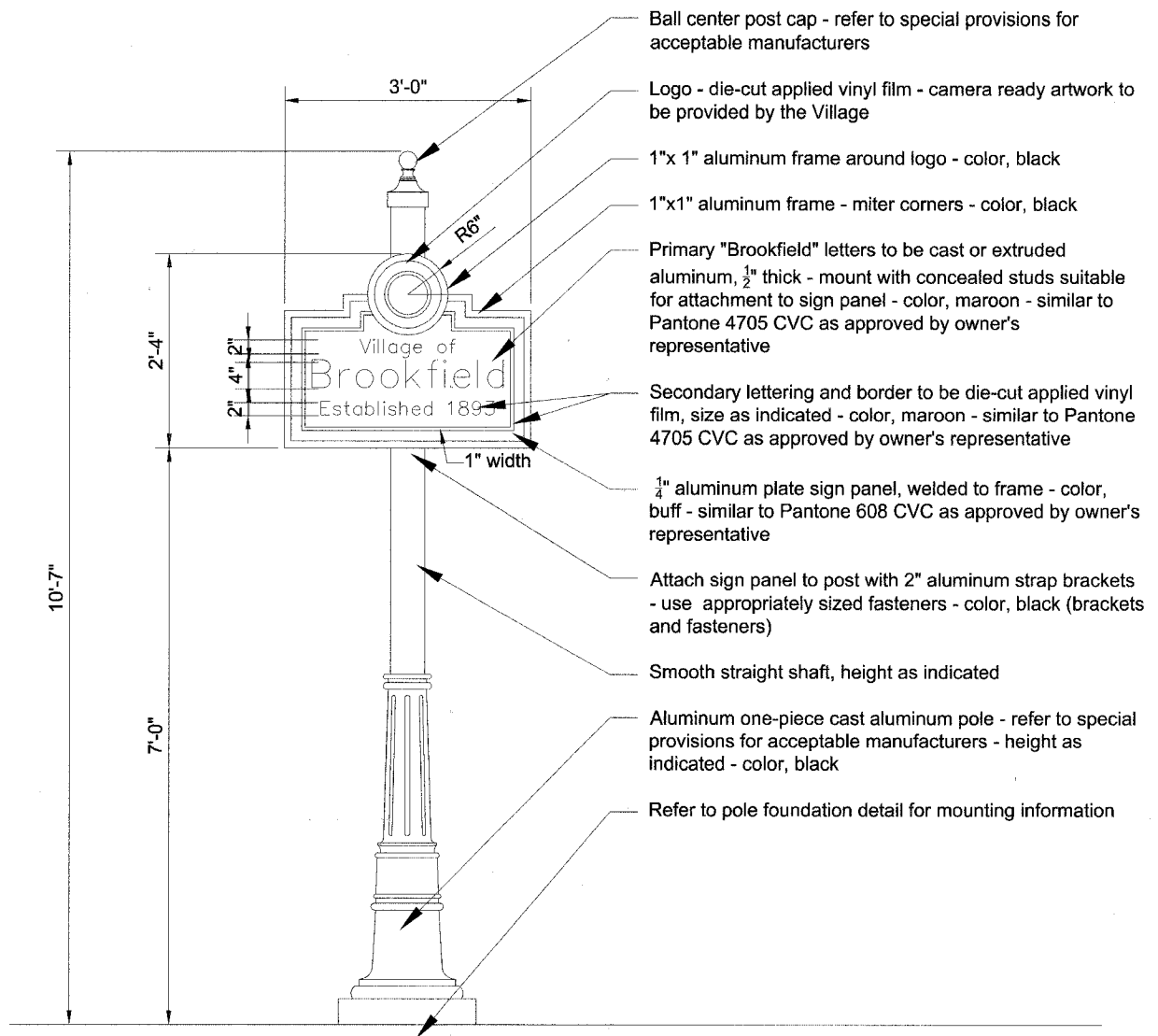
9933 Roosevelt Road
Westchester, Illinois 60154-2780
Phone: 708/865-0300
Fax: 708/865-1212

**TRANSPORTATION CORRIDOR
BEAUTIFICATION PROJECT
VILLAGE OF BROOKFIELD, ILLINOIS**

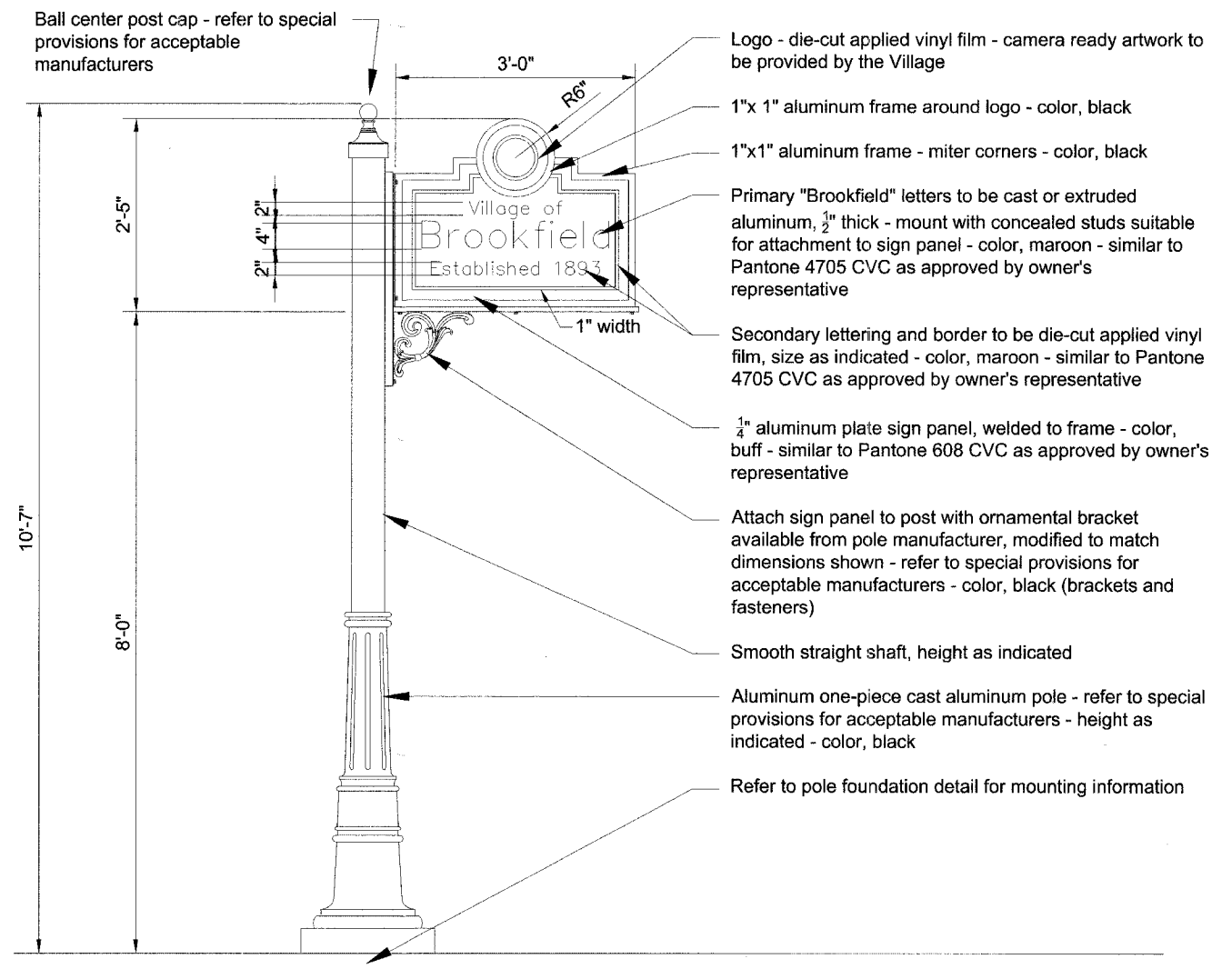
ENTRY SIGN DETAILS

SCALE:	NOT TO SCALE	SHEET
DRAWN BY:	LEV/MK/ECW/TSG	13
BOOK NO.:	SDR33	OF
DATE:	2-9-07	15
REVISION:	E.H.E. NO.: 125-06-33580	

ROUTE NO.	SECTION	COUNTY	TOTAL SHEETS	SHEET NO.
X	06-00121-00-LS	COOK	15	14
ILLINOIS PROJECT		TE-0001(773)		
VILLAGE SECTION		06-00121-00-LS		
CONTRACT NO.		83927		



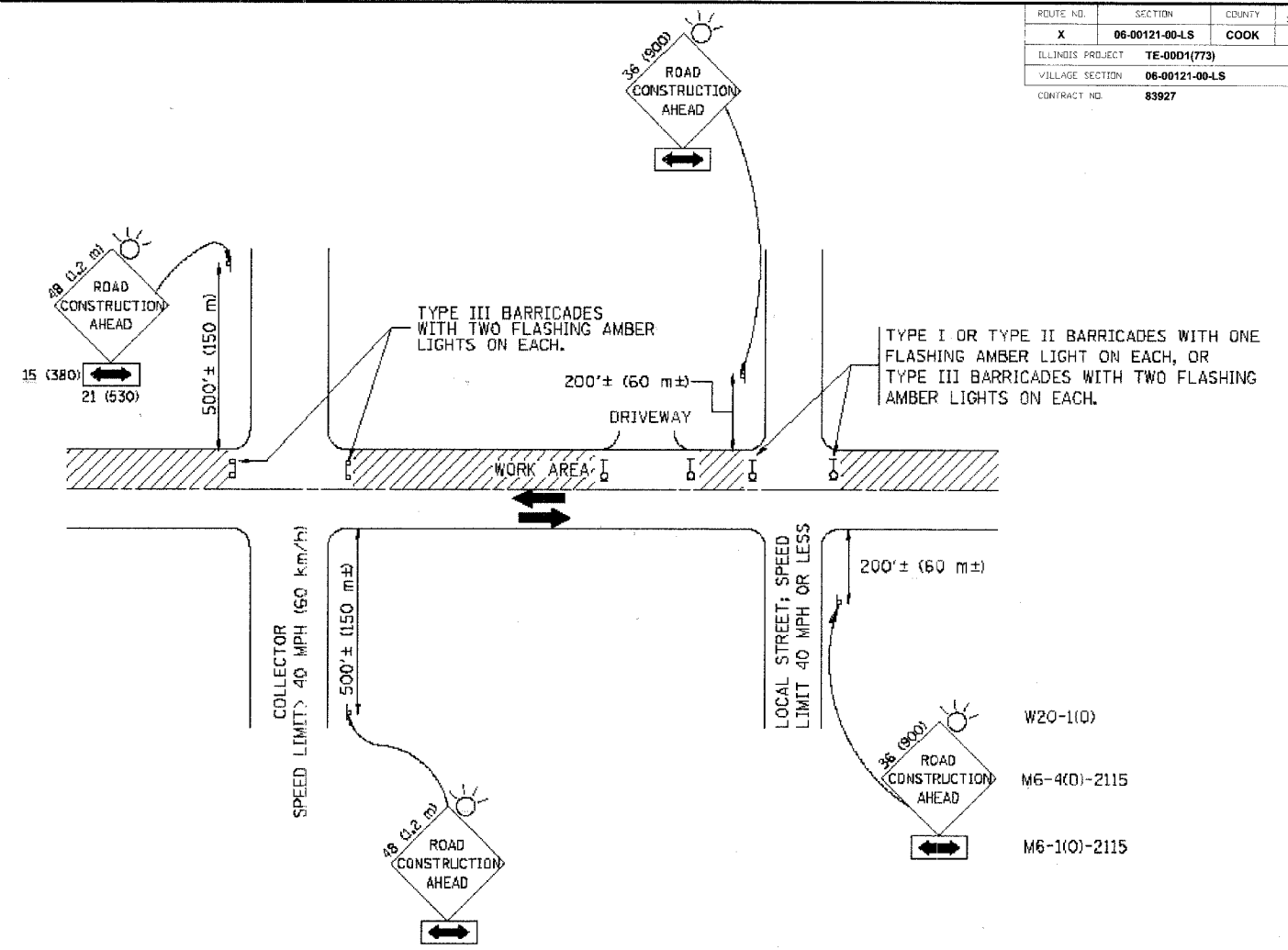
ENTRY SIGNAGE



MINOR SIGN COMPLETE

Drawing File: W:\Projects\12506335 - Grand Blvd Beautification\Sign Details.dwg Apr 06, 2007 - 3:17pm

ROUTE NO.	SECTION	COUNTY	TOTAL SHEETS	SHEET NO.
X	06-00121-00-LS	COOK	15	15
ILLINOIS PROJECT		TE-0001(773)		
VILLAGE SECTION		06-00121-00-LS		
CONTRACT NO.		83927		



TRAFFIC CONTROL AND PROTECTION FOR SIDE ROADS, INTERSECTIONS, AND DRIVEWAYS

NOTES:

A. FOR NO LANE RESTRICTION ON THE SIDE ROAD OR DRIVEWAYS

1. SIDE ROAD WITH A SPEED LIMIT OF 40 MPH (60 km/h) OR LESS AS SHOWN ON THE DRAWING AND AS DIRECTED BY THE ENGINEER:

a) ONE **ROAD CONSTRUCTION AHEAD** SIGN 36 x 36 (900x900) WITH A FLASHER AND FLAG MOUNTED ON IT APPROXIMATELY 200' (60 m) IN ADVANCE OF THE MAIN ROUTE.

b) THE CLOSED PORTION OF THE MAIN ROUTE SHALL BE PROTECTED BY BLOCKING WITH TYPE I, TYPE II OR TYPE III BARRICADES, 1/3 OF THE CROSS SECTION OF THE CLOSED PORTION.

2. SIDE ROAD WITH A SPEED LIMIT GREATER THAN 40 MPH (60 km/h) AS SHOWN ON THE DRAWING AND AS DIRECTED BY THE ENGINEER:

a) ONE **ROAD CONSTRUCTION AHEAD** SIGN 48 x 48 (1.2 m x 1.2 m) WITH A FLASHER MOUNTED ON IT APPROXIMATELY 500' (150 m) IN ADVANCE OF THE MAIN ROUTE.

b) THE CLOSED PORTION OF THE MAIN ROUTE SHALL BE PROTECTED BY BLOCKING WITH TYPE III BARRICADES, 1/2 OF THE CROSS SECTION OF THE CLOSED PORTION.

3. WHEN THE SIDE ROAD LIES BETWEEN THE BEGINNING OF THE MAINLINE SIGNING AND THE WORK ZONE, A SINGLE HEADED ARROW (M6-1) SHALL BE USED IN LIEU OF THE DOUBLE HEADED ARROW (M6-4).

B. FOR A LANE CLOSURE ON A SIDE ROAD OR DRIVEWAY:

USE APPLICABLE PORTIONS OF THE TYPICAL APPLICATION OF TRAFFIC CONTROL DEVICES (STD. 701501, STD. 701606 OR THE APPROPRIATE STANDARD). THE SPACING OF SIGNS AND BARRICADES SHALL BE ADJUSTED FOR FIELD CONDITIONS AS DIRECTED BY THE ENGINEER. THE DIRECTIONAL ARROW SHALL BE COVERED OR REMOVED WHEN NO LONGER CONSISTENT WITH THE SIDE ROAD LANE CLOSURE.

C. ADVANCE WARNING SIGNS ARE TO BE OMITTED ON DRIVEWAY UNLESS OTHERWISE NOTED.

D. THE TRAFFIC CONTROL AND PROTECTION FOR SIDE ROADS, INTERSECTIONS, AND DRIVEWAYS SHALL BE INCIDENTAL TO THE COST OF SPECIFIED TRAFFIC CONTROL STANDARDS OR ITEMS.

All dimensions are in millimeters (Inches) unless otherwise shown.

REVISIONS	
NAME	DATE
LHA	8/89
T. RAMMACHER	09/08/94
J. OBERLE	10/18/95
A. HOUSEH	03/06/96
A. HOUSEH	10/15/96
T. RAMMACHER	01/06/00

ILLINOIS DEPARTMENT OF TRANSPORTATION
TRAFFIC CONTROL AND PROTECTION
FOR
SIDE ROADS, INTERSECTIONS, AND
DRIVEWAYS

SCALE: NONE

DRAWN BY