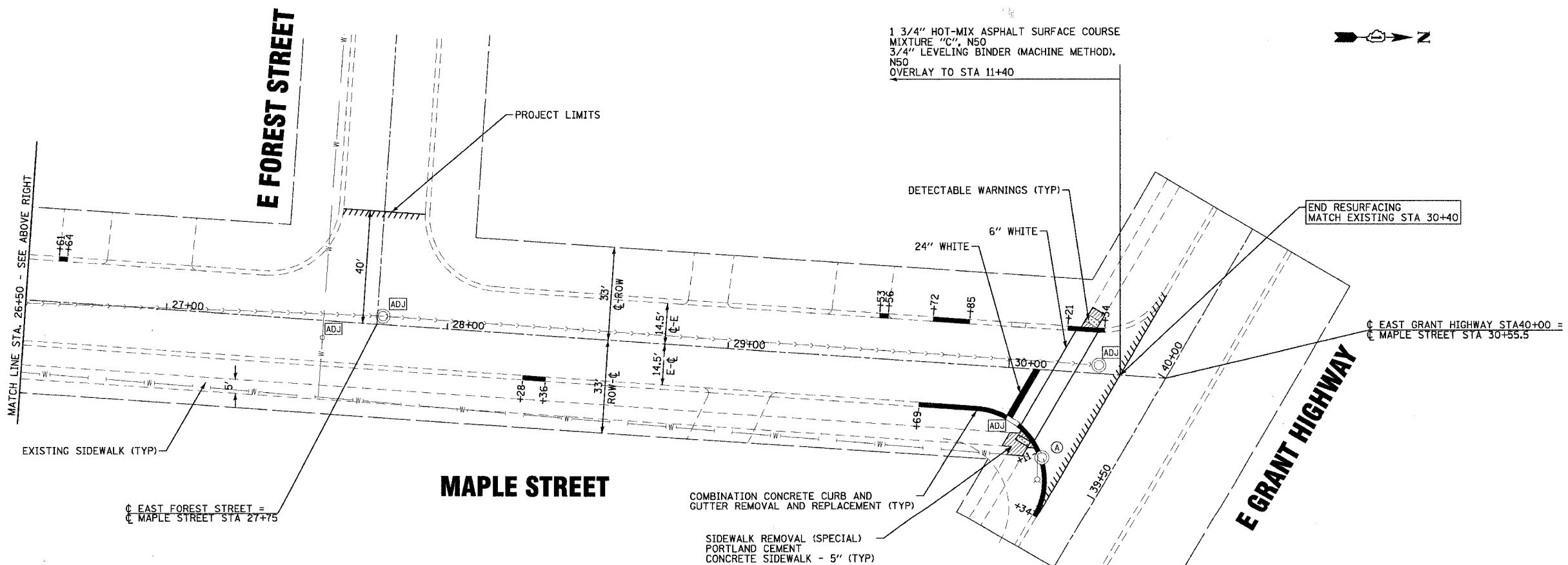
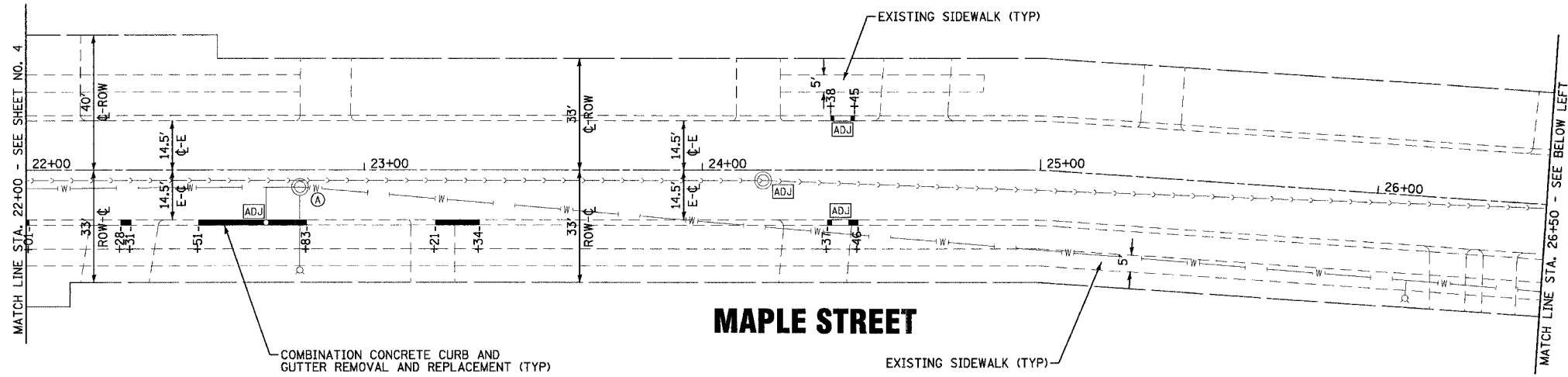


F.A. RTE.	SECTION	COUNTY	TOTAL SHEETS	SHEET NO.
	07-00026-00-RS	MCHENRY	10	5
STA. 22+00	TO STA. 30+40			
FED. ROAD DIST. NO. 1	ILLINOIS	FED. AID PROJECT		
C-91-154-07		M-8003 (757)		

CONTRACT NO.: 83929



4/1/2007 4:48:59 PM
 COPYRIGHT © 2006 BY BAXTER & WOODMAN, INC.
 STATE OF ILLINOIS - PROFESSIONAL DESIGN FIRM
 LICENSE NO. 061-061392-EXPRES-07/20/2007

CONSULTANTS	REV. NO.	DATE	DESCRIPTION
	1	3/21/07	PER I.D.O.T. REVIEW
	2	4/13/07	PER I.D.O.T. REVIEW

* REFER TO EQUIPMENT MANUFACTURER'S SHOP DRAWINGS

DRAWING FILE: ...\\DCN\6061392-PP2.sht

BAXTER & WOODMAN
Consulting Engineers

Baxter & Woodman
Crystal Lake, Illinois 815.459.1260
Bacon, Illinois 815.773.1970
Burlington, Wisconsin 262.783.7834
Mokena, Illinois 708.478.5060
DeKalb, Illinois 815.787.3111
Grayslake, Illinois 847.223.5028
Rockford, Illinois 815.499.1051
Plainfield, Illinois 815.639.7495
Madison, Illinois 608.347.1542

CITY OF MARENGO, ILLINOIS
MAPLE STREET
STP (LAPP) IMPROVEMENTS

MAPLE STREET
STA 22+00 TO STA 30+40

DESIGNED BY	SCALE
MWP	1" = 20'
DRAWN BY	PROJECT NO.
RKM	061392.40
CHECKED BY	SHEET NO.
MWP	
DATE	
02/09/07	5 OF 10