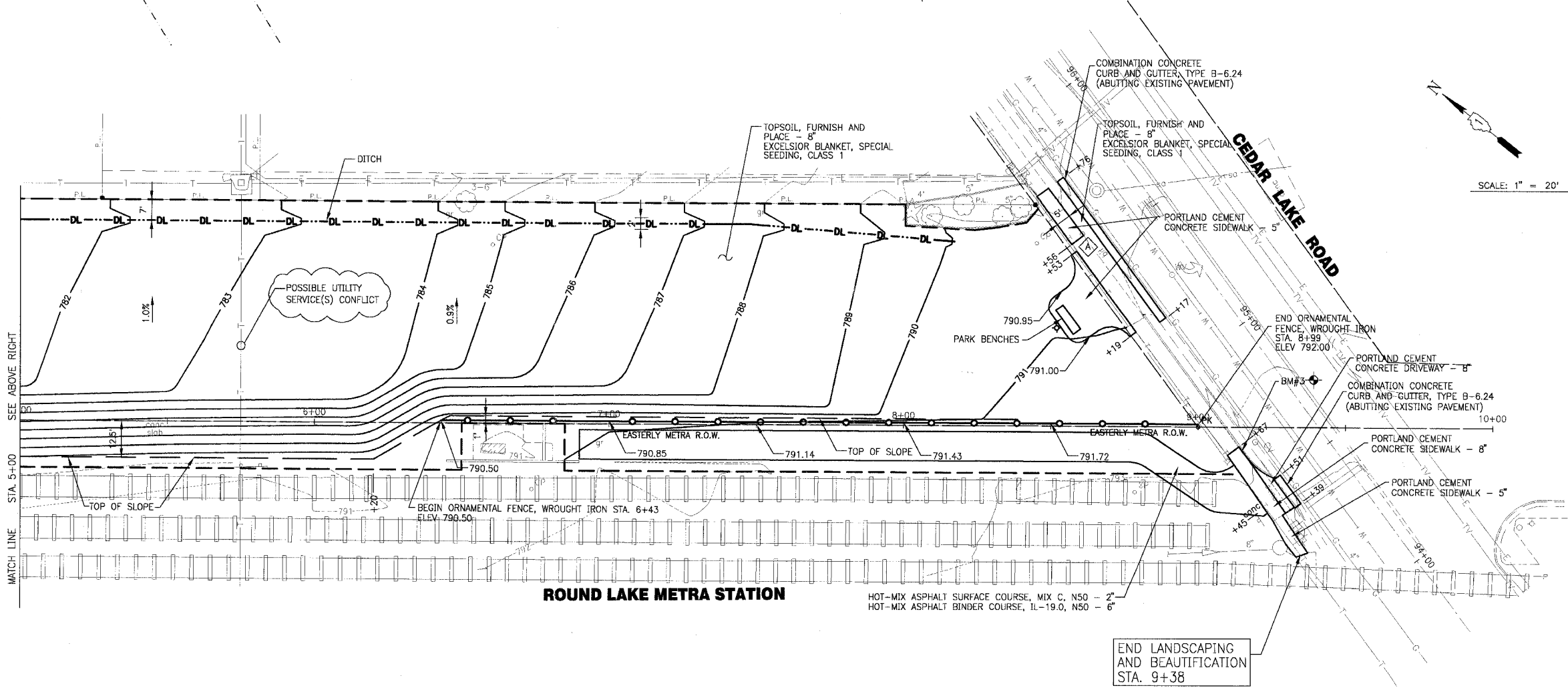
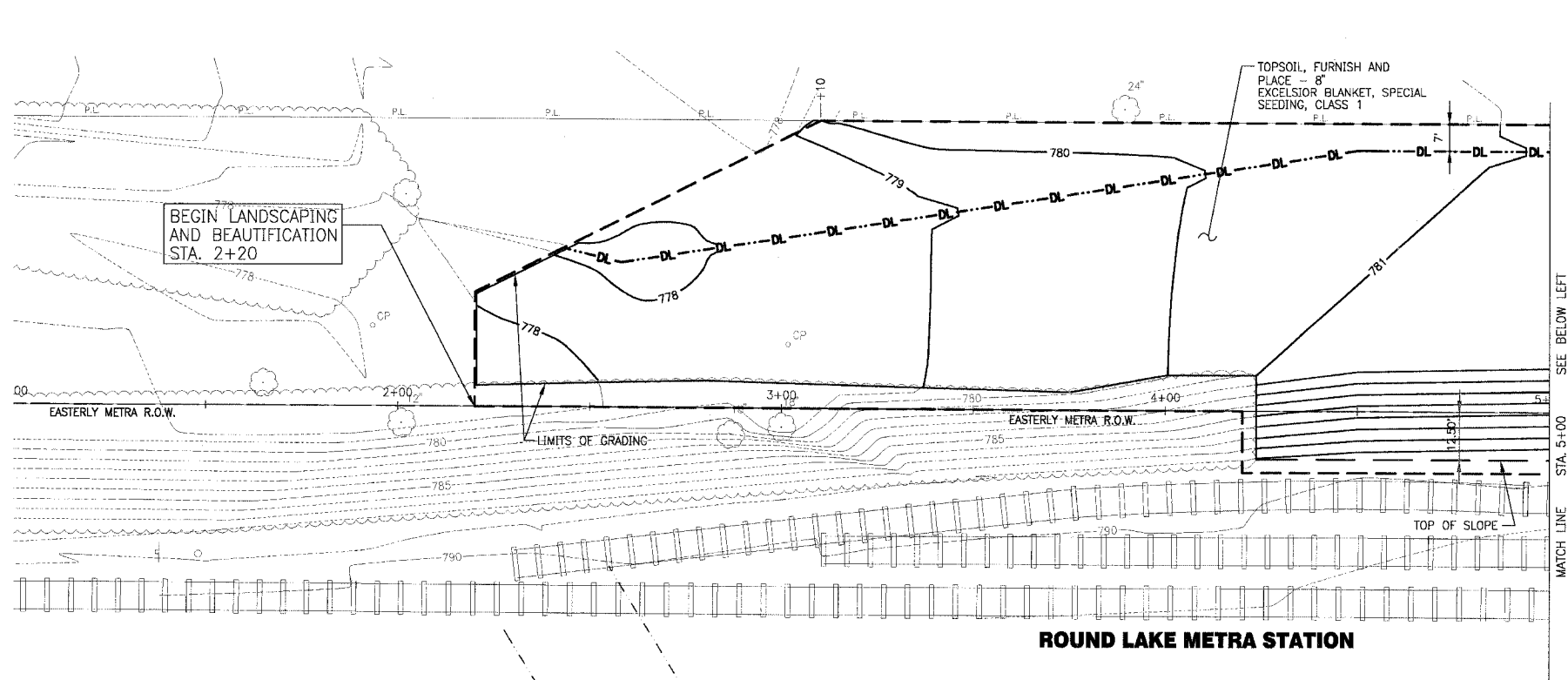


F.A. ROUTE NO.	SECTION	COUNTY	TOTAL SHEETS	SHEET NO.
06-00028-00-LS	LAKE	ILLINOIS	18	7
STA. TO STA.	ILLINOIS		FED AID PROJECT	
C-91-150-07	TE-0001(757)		CONTRACT NO.: 83930	



VILLAGE OF ROUND LAKE, ILLINOIS, PROJECT NO. 06-00028-00-LS, SHEET NO. 7 OF 18, DRAWN BY: [Name], CHECKED BY: [Name], DATE: 2-09-07.

CONSULTANTS	REV. NO.	DATE	DESCRIPTION
BAXTER & WOODMAN	1	4/4/07	VILLAGE/IDOT/LCDOT/METRA REVIEW
	2	5/10/07	VILLAGE/IDOT/LCDOT/METRA REVIEW

* REFER TO EQUIPMENT MANUFACTURER'S SHOP DRAWINGS

BAXTER & WOODMAN
 Consulting Engineers

Baxter & Woodman
 Crystal Lake, Illinois 815.459.1260
 Burlington, Wisconsin 262.763.7834
 Mokena, Illinois 708.478.2090
 Oak Hills, Illinois 815.787.3111
 Graystone, Illinois 847.238.3088
 Rockford, Illinois 815.489.1551
 Plainfield, Illinois 815.609.7425

VILLAGE OF ROUND LAKE, ILLINOIS
METROPOLITAN CORRIDOR BEAUTIFICATION
AND PEDESTRIAN ACCESS ACCOMMODATION PROJECT

METROPOLITAN CORRIDOR
FINAL GRADING PLAN
STA. 1+00 TO STA. 10+00

DESIGNED BY	SCALE
MWP	HORIZ: 1"=20'
DRAWN BY	PROJECT NO.
UKB	060749
CHECKED BY	SHEET NO.
MWP	7 OF 18
DATE	
2-09-07	