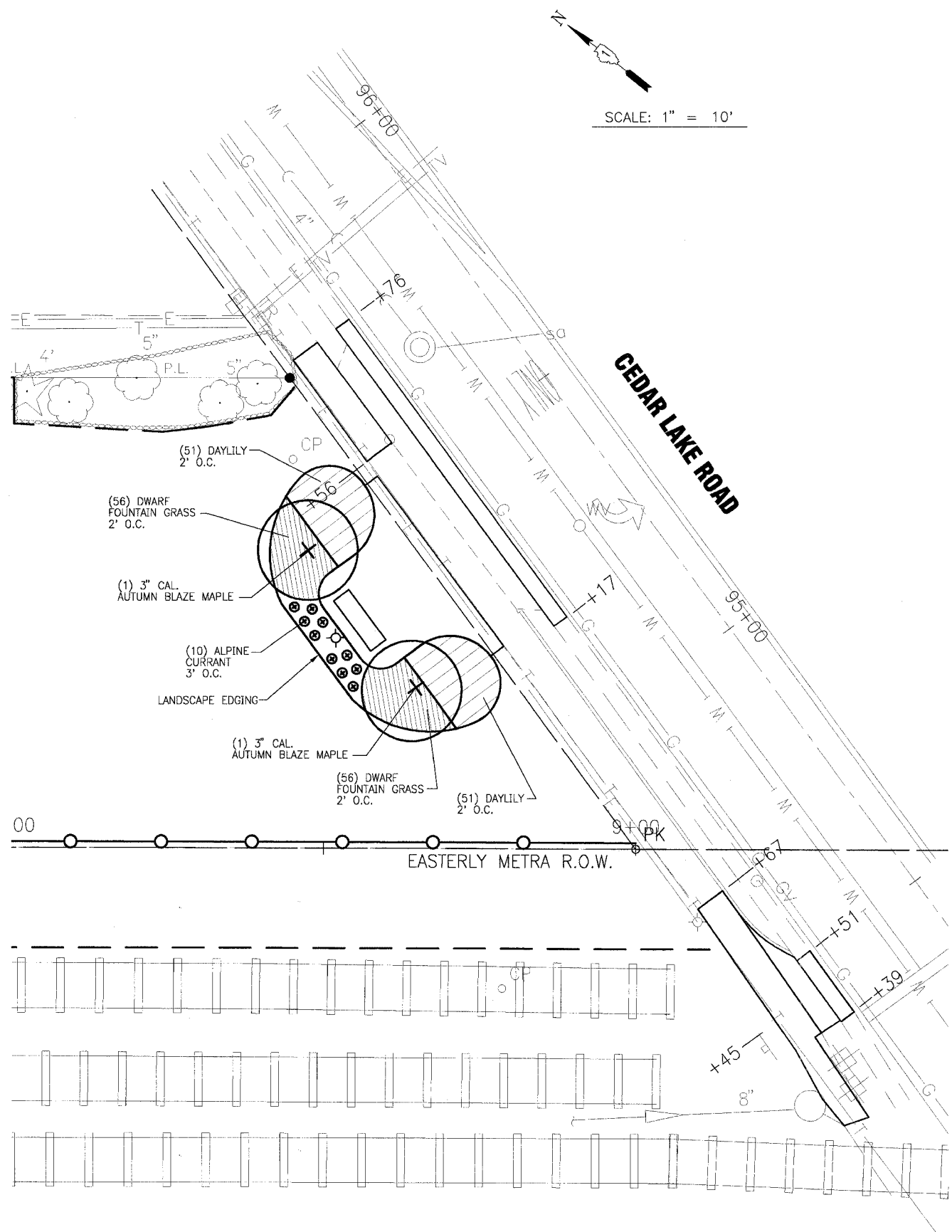


**LANDSCAPING NOTES**

1. PLANT NAMES CONFORM TO THE NAMES GIVEN IN 'STANDARDIZED PLANT NAMES' 1942 EDITION, PREPARED BY THE AMERICAN JOINT COMMITTEE ON HORTICULTURE NOMENCLATURE. NAMES OR VARIETIES NOT INCLUDED THEREIN CONFORM GENERALLY WITH NAMES ACCEPTED IN THE NURSERY TRADE. PLANT MATERIAL TO BE SECURED FROM NURSERIES WITHIN THE NORTHERN ILLINOIS AREA.
2. SHREDDED BARK MULCH 3" - THE RATE OF APPLICATION SHALL BE FOR A FULL THREE INCH DEPTH (3") OF MULCH TO BE APPLIED TO THE PLANTING BED. FINAL GRADE OF MULCH AT THE WALK EDGE (AFTER SETTLING OCCURS) SHOULD BE ONE INCH (1") BELOW THE ADJACENT WALK AND SEATING AREA.
3. TREES WITH WIRE BASKETS SHALL HAVE THE TOP 1/2 OF THE WIRE BASKET REMOVED PRIOR TO PLANTING.
4. PLANTING BED PREPARATION: REMOVE EXISTING CONCRETE, STONE AND SOIL TO A DEPTH OF FIFTEEN INCHES (15"). REPLACE TO GRADE WITH A MINIMUM OF TWELVE INCHES (12") OF TOP SOIL, APPROVED BY THE VILLAGE AND ENGINEER. TOP DRESS THE ENTIRE BED WITH A TWO INCH LAYER (2") OF PEAT MOSS ALONG WITH A ONE INCH LAYER (1") OF MUSHROOM COMPOST AND A GRANULAR FERTILIZER AND SHALL BE INCLUDED IN THE LANDSCAPE FILL SOIL PAY ITEM. THE ENTIRE BED SHALL BE ROTO-TILLED JUST PRIOR TO THE INSTALLATION OF PLANTS. THE DAYLILLIES AND THE DWARF FOUNTAIN GRASS WILL BE PLANTED TWO FEET (2') ON CENTER. THE TURF EDGE OF THE BED SHALL BE NEATLY EDGED TO A DEPTH OF FOUR INCHES (4").
5. THE PLANTS WILL BE INSPECTED BY THE VILLAGE OF ROUND LAKE PRIOR TO PLANTING. ALL PLANT MATERIAL WILL BE GUARANTEED FOR ONE YEAR (1) AFTER ACCEPTANCE.

**LANDSCAPING QUANTITIES**

TREES CODE NUMBER	DESCRIPTION	COMMON NAME	BOTANICAL NAME	SIZE (CALIPER)	UNIT	QUANTITY
A2000118	TREE, ACER FREEMANII AUTUMN BLAZE (AUTUMN BLAZE FREEMAN MAPLE) 3" CALIPER, BALLED AND BURLAPPED	Autumn Blaze Freeman Maple	Acer x freemanii 'Autumn Blaze'	3.0"	EACH	2
SHRUBS CODE NUMBER	DESCRIPTION	COMMON NAME	BOTANICAL NAME	SIZE (FT. HT.)	UNIT	QUANTITY
C2006236	SHRUB, RIBES ALPINUM (ALPINE CURRANT), 3' HEIGHT, BALLED AND BURLAPPED	Alpine Currant	Ribes alpinum	3'	EACH	10
PERENNIALS CODE NUMBER	DESCRIPTION	COMMON NAME	BOTANICAL NAME	SIZE (GAL.)	UNIT	QUANTITY
X0301407	PERENNIAL PLANTS, GALLON POT	Dwarf Fountain Grass	Pennisetum alopecuroides 'Hameln'	1 GAL.	100/UNIT	1.12
		Little Wine Cup Daylily	Hemerocallis 'Little Wine Cup'	1 GAL.	100/UNIT	1.02
MISCELLANEOUS CODE NUMBER	DESCRIPTION	COMMON NAME	BOTANICAL NAME	SIZE	UNIT	QUANTITY
K1005481	SHREDDED BARK MULCH 3"	Shredded Bark Mulch		3" depth	SQ. YD.	59
K1003455	LANDSCAPE FILL SOIL	Landscape Fill Soil			CU. YD.	20



I:\PROJECTS\060749\TIP\DWG\060749A\PLN\060749A.LSP.dwg - LANDSCAPE-SH9  
 Plotted: 5-10-07 @ 8:33am By: 560kar  
 Copyright © 2006, By Baxter & Woodman, Inc.  
 State of Illinois - Professional Design Firm  
 License No. - 184-001121 - Expires: 4-30-07

CONSULTANTS	REV. NO.	DATE	DESCRIPTION
	1	4/4/07	VILLAGE/IDOT/LCDOT/METRA REVIEW
	2	5/10/07	VILLAGE/IDOT/LCDOT/METRA REVIEW

\* - REFER TO EQUIPMENT MANUFACTURER'S SHOP DRAWINGS

**BAXTER & WOODMAN**  
 Consulting Engineers

**Baxter & Woodman**  
 Oriental Lake, Illinois 815.459.1280  
 Burlington, Wisconsin 262.763.7834  
 Mokena, Illinois 708.478.2090  
 DeKalb, Illinois 815.787.3111  
 Grayslake, Illinois 815.459.5988  
 Rockford, Illinois 815.459.1551  
 Plainfield, Illinois 815.609.7425

**VILLAGE OF ROUND LAKE, ILLINOIS**  
**METROPOLITAN CORRIDOR BEAUTIFICATION**  
**AND PEDESTRIAN ACCESS ACCOMMODATION PROJECT**

**METROPOLITAN CORRIDOR**  
**LANDSCAPE PLAN**  
**STA. 8+00 TO STA. 9+50**

DESIGNED BY	MWP	SCALE	HORIZ: 1"=10'
DRAWN BY	UKB	PROJECT NO.	060749
CHECKED BY	MWP	SHEET NO.	9 OF 18
DATE	2-09-07		