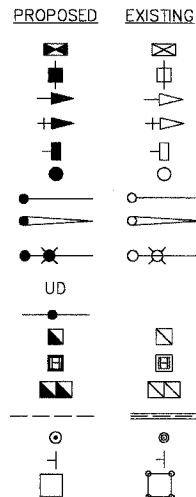


F.A.U. R.T.E.	SECTION	COUNTY	TOTAL SHEETS	SHEET NO.
1223	04-00272-00-TL	LAKE	72	20
TRAFFIC SIGNAL MODERNIZATION PLAN				
ILLINOIS				

TRAFFIC SIGNAL LEGEND

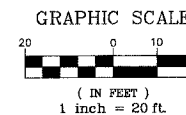
- CONTROLLER
- SERVICE INSTALLATION
- SIGNAL HEAD
- SIGNAL HEAD WITH BACKPLATE
- SIGNAL HEAD, PEDESTRIAN
- SIGNAL POST
- MAST ARM ASSEMBLY AND POLE, STEEL
- MAST ARM ASSEMBLY AND POLE, ALUMINUM
- COMBINATION MAST ARM ASSEMBLY AND POLE, STEEL, WITH LUMINAIRE
- UNIT DUCT
- CONDUIT SPLICE
- HANDHOLE
- HEAVY DUTY HANDHOLE
- DOUBLE HANDHOLE
- G.S. CONDUIT IN GROUND (CIG)
- PEDESTRIAN PUSHBUTTON DETECTOR
- PEDESTRIAN PUSHBUTTON SIGN
- DETECTOR LOOP



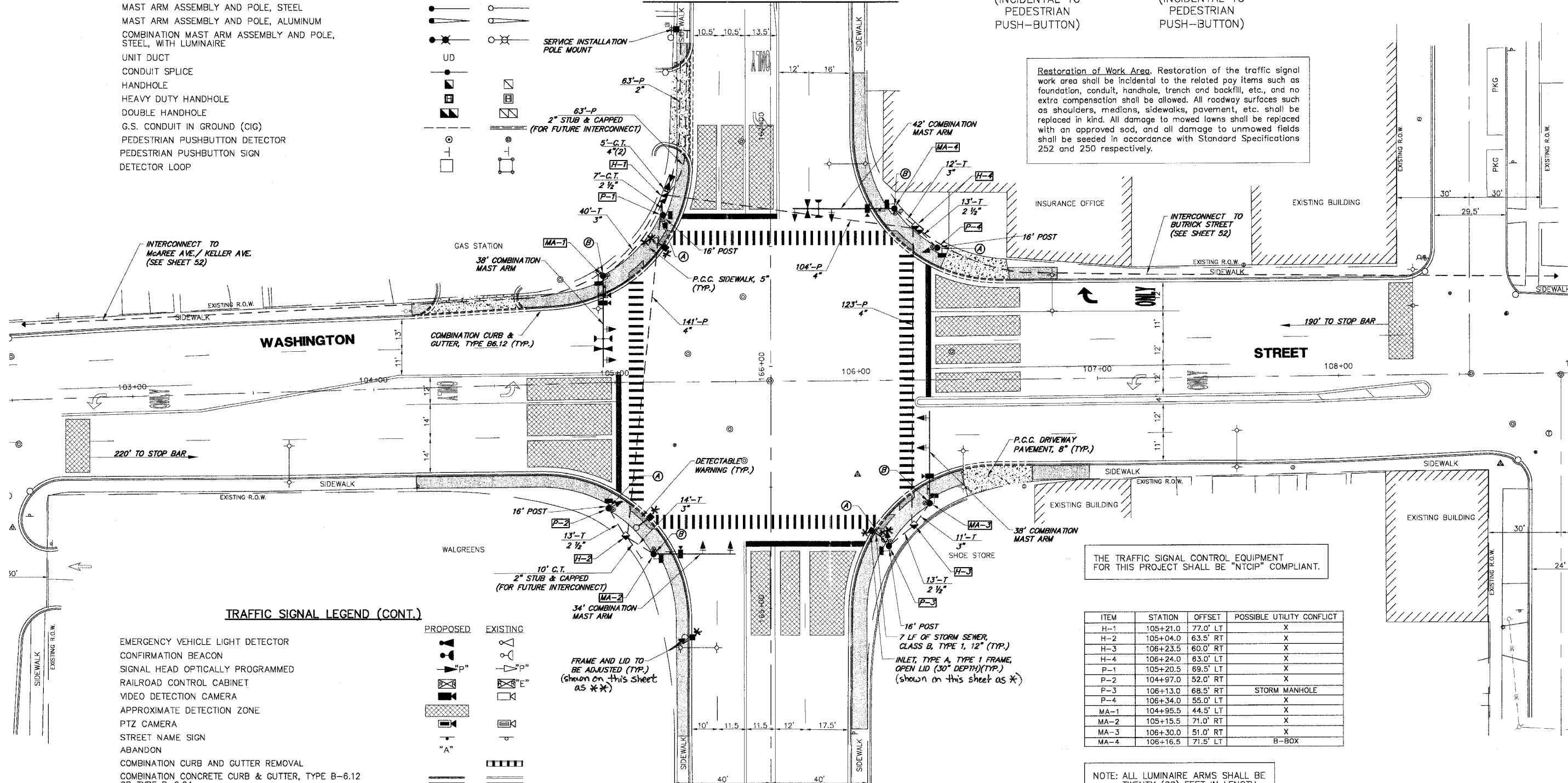
R10-4b
4 REQUIRED
(INCIDENTAL TO PEDESTRIAN PUSH-BUTTON)



R10-4b
4 REQUIRED
(INCIDENTAL TO PEDESTRIAN PUSH-BUTTON)



LEWIS AVE.
MATCH LINE (STA.167+50) - SEE SHEET 21



Restoration of Work Area. Restoration of the traffic signal work area shall be incidental to the related pay items such as foundation, conduit, handhole, trench and backfill, etc., and no extra compensation shall be allowed. All roadway surfaces such as shoulders, medians, sidewalks, pavement, etc. shall be replaced in kind. All damage to mowed lawns shall be replaced with an approved sod, and all damage to unmowed fields shall be seeded in accordance with Standard Specifications 252 and 250 respectively.

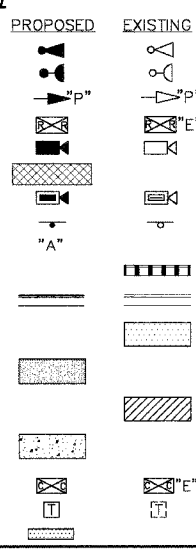
THE TRAFFIC SIGNAL CONTROL EQUIPMENT FOR THIS PROJECT SHALL BE "NTCIP" COMPLIANT.

ITEM	STATION	OFFSET	POSSIBLE UTILITY CONFLICT
H-1	105+21.0	77.0' LT	X
H-2	105+04.0	63.5' RT	X
H-3	106+23.5	60.0' RT	X
H-4	106+24.0	63.0' LT	X
P-1	105+20.5	69.5' LT	X
P-2	104+97.0	52.0' RT	X
F-3	106+13.0	68.5' RT	STORM MANHOLE
P-4	106+34.0	55.0' LT	X
MA-1	104+95.5	44.5' LT	X
MA-2	105+15.5	71.0' RT	X
MA-3	106+30.0	51.0' RT	X
MA-4	106+16.5	71.5' LT	B-BOX

NOTE: ALL LUMINAIRE ARMS SHALL BE TWENTY (20) FEET IN LENGTH

TRAFFIC SIGNAL LEGEND (CONT.)

- EMERGENCY VEHICLE LIGHT DETECTOR
- CONFIRMATION BEACON
- SIGNAL HEAD OPTICALLY PROGRAMMED
- RAILROAD CONTROL CABINET
- VIDEO DETECTION CAMERA
- APPROXIMATE DETECTION ZONE
- PTZ CAMERA
- STREET NAME SIGN
- ABANDON
- COMBINATION CURB AND GUTTER REMOVAL
- COMBINATION CONCRETE CURB & GUTTER, TYPE B-6.12 OR TYPE B-6.24
- SIDEWALK PAVEMENT REMOVAL
- PORTLAND CEMENT CONCRETE SIDEWALK, 5"
- DRIVEWAY PAVEMENT REMOVAL
- PORTLAND CEMENT CONCRETE DRIVEWAY PAVEMENT, 8"
- VIDEO COMMUNICATIONS CABINET
- TELEPHONE DROP
- DETECTABLE WARNING



MATCH LINE (STA.164+23) - SEE SHEET 21
LEWIS AVE.

PLANS PREPARED BY:
GEWALT HAMILTON ASSOCIATES, INC.
Consulting Engineers & Surveyors
850 Forest Sign Drive
Vernon Hills, IL 60061
(847) 478-9700
(847) 478-9701 Fax

REVISIONS	
NAME	DATE

LAKE COUNTY DIVISION OF TRANSPORTATION
TRAFFIC SIGNAL MODERNIZATION PLAN
WASHINGTON STREET AND LEWIS AVENUE
SCALE: 1"=20'
DATE: MAY 1, 2007
DRAWN BY: PJS
DESIGNED BY: JRD
CHECKED BY: BLS