

F.A.U. R.T.E.	SECTION	COUNTY	TOTAL SHEETS	SHEET NO.
1223	04-00272-00-TL	LAKE	72	56
MID-BLOCK PEDESTRIAN CROSSING				
ILLINOIS				

**SCHEDULE OF QUANTITIES**

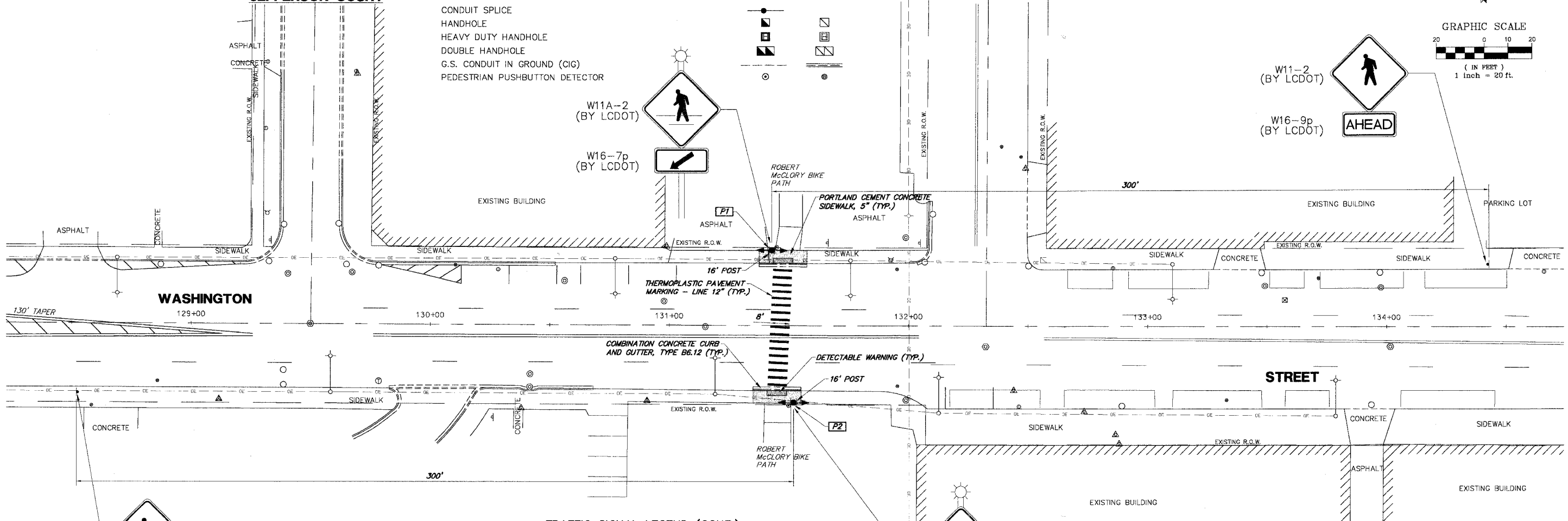
QUANT.	UNIT	ITEM
1.	200	SQ.FT. PORTLAND CEMENT CONCRETE SIDEWALK, 5"
2.	32	SQ.FT. DETECTABLE WARNING
3.	40	FOOT COMBINATION CURB AND GUTTER REMOVAL
4.	200	SQ.FT. SIDEWALK REMOVAL
5.	40	FOOT COMBINATION CONCRETE CURB AND GUTTER, B6.12
6.	136	FOOT THERMOPLASTIC PAVEMENT MARKING -- LINE 12"
7.	8	FOOT CONCRETE FOUNDATION, TYPE A
8.	2	EACH PEDESTRIAN PUSH-BUTTON
9.	2	EACH TRAFFIC SIGNAL POST, 16 FT (SPECIAL)
10.	2	EACH PEDESTRIAN ACTIVATED CROSSWALK WARNING SYSTEM

**TRAFFIC SIGNAL LEGEND**

PROPOSED	EXISTING

**EDISON COURT**

**JEFFERSON COURT**



**TRAFFIC SIGNAL LEGEND (CONT.)**

PROPOSED	EXISTING

ITEM	STATION	OFFSET	POSSIBLE UTILITY CONFLICT
P-1	X	X	X
P-2	X	X	X

THE TRAFFIC SIGNAL CONTROL EQUIPMENT FOR THIS PROJECT SHALL BE "NTCIP" COMPLIANT.

**PEDESTRIANS TO CROSS WAIT FOR ADEQUATE GAPS IN TRAFFIC** (SPECIAL BY LCDOT)

**PUSH BUTTON FOR** (R10-4b 2 REQUIRED (INCIDENTAL TO PEDESTRIAN PUSH-BUTTON))

PLANS PREPARED BY:  
**GEWALT HAMILTON ASSOCIATES, INC.**  
 Consulting Engineers & Surveyors  
 850 Forest Edge Drive  
 Vernon Hills, IL 60061  
 (847) 476-9700  
 (847) 476-9701 Fax

REVISIONS	
NAME	DATE

LAKE COUNTY DIVISION OF TRANSPORTATION  
**MID-BLOCK PEDESTRIAN CROSSING**

**WASHINGTON STREET AND ROBERT MCCLORY BIKE PATH**

SCALE: 1"=20'  
 DATE: MAY 1, 2007

DRAWN BY: PJS  
 DESIGNED BY: JRD  
 CHECKED BY: BLS