

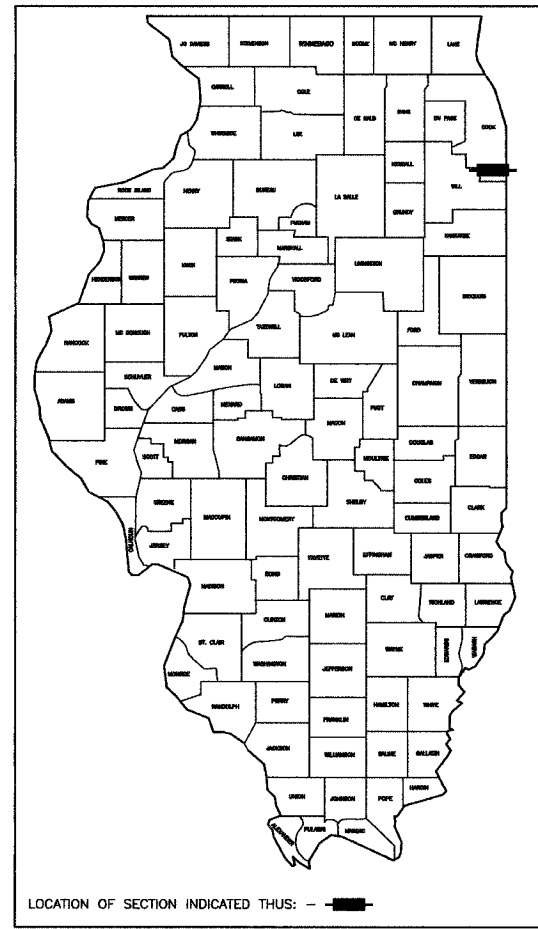
F. A. U. NO.	SECTION	COUNTY	TOTAL SHEETS	SHEET NO.
1629	07-00220-00-RS	COOK	20	01
STA.		TO STA.		
FED. ROAD DIST. NO.	KLINGBE	FED. AID PROJECT		

CONTRACT #83934

STATE OF ILLINOIS
DEPARTMENT OF TRANSPORTATION
DIVISION OF HIGHWAYS

PLANS FOR PROPOSED FEDERAL AID HIGHWAY

FAU 1629 / VOLLMER ROAD
HALSTED STREET TO DIXIE HIGHWAY
LOCAL AGENCY PAVEMENT PRESERVATION
STREET RESURFACING
PROJECT: M-8003(793)
SECTION NO.: 07-00220-00-RS
JOB NO.: C-91-181-07
CITY OF CHICAGO HEIGHTS
COOK COUNTY



STATE OF ILLINOIS
DEPARTMENT OF TRANSPORTATION
DIVISION OF HIGHWAYS

APPROVED: Anthony De Luca MAYOR, CITY OF CHICAGO HEIGHTS
PASSED: MAY 31 2007
CHRISTOPHER HOLT REGION ONE ENGINEER OF LOCAL ROADS & STREETS

RELEASED FOR BID BASED ON LIMITED REVIEW: June 1 2007
Diane O'Keefe DEPUTY DIRECTOR OF HIGHWAYS, REGION ONE ENGINEER

PRINTED BY THE AUTHORITY OF
THE STATE OF ILLINOIS

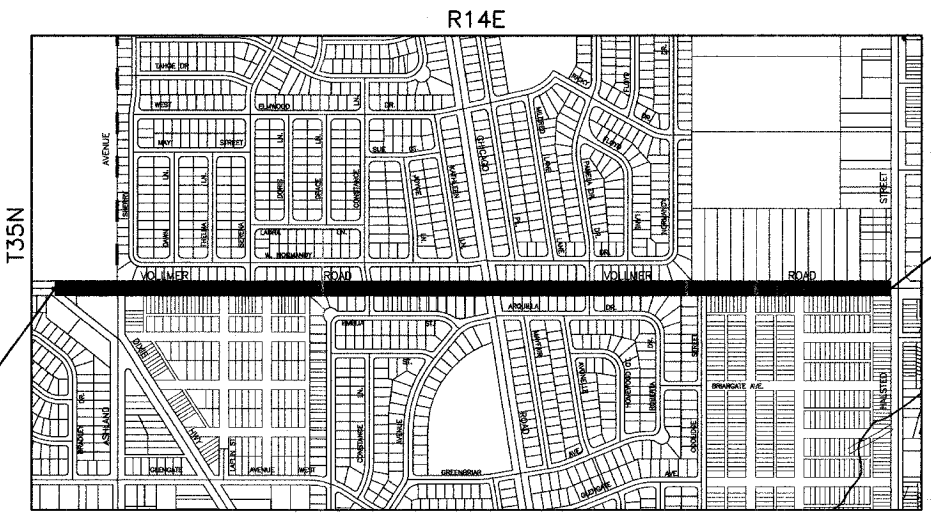
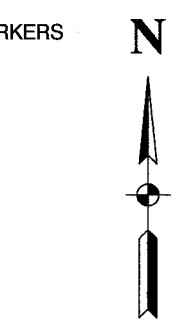
PREPARED BY OR UNDER THE DIRECT SUPERVISION OF:
Josh M. Dal
4/9/07

INDEX OF SHEETS

- 1 COVER SHEET, INDEX OF SHEETS, LOCATION MAP
- INDEX OF STATE STANDARDS
- 2 SUMMARY OF QUANTITIES & GENERAL NOTES
- 3 TYPICAL CROSS SECTION
- 4-6 PAVEMENT PLAN
- 7-9 STRIPING PLAN
- 10-20 DISTRICT 1 STANDARD DETAILS

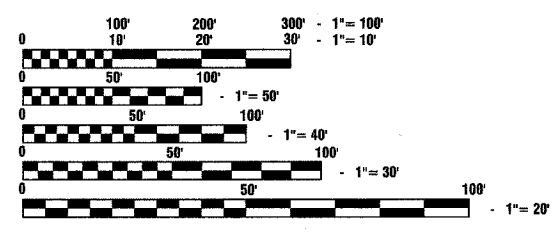
STATE STANDARDS

- 000001-04 STANDARD STANDARDS, ABBREVIATIONS AND PATTERNS
- 280001-03 TEMPORARY EROSION CONTROL SYSTEMS
- 424001-04 CURB RAMPS FOR SIDEWALK
- 442201-02 CLASS C AND D PATCHES
- 606001-03 CONCRETE CURB AND COMBINATION CONCRETE CURB & GUTTER
- 701501-03 URBAN LANE CLOSURE 2-L, 2-W, UNDIVIDED
- 701601-04 URBAN LANE CLOSURE, MULTILANE INTERSECTION
- 701701-04 URBAN LANE CLOSURE, MULTILANE INTERSECTION
- 701801-03 LANE CLOSURE, MULTILANE, 1W OR 2W, CROSSWALK OR SIDEWALK CLOSURE,
- 702001-06 TRAFFIC CONTROL DEVICES
- 780001-01 TYPICAL PAVEMENT MARKINGS
- 781001-02 TYPICAL APPLICATIONS RAISED REFLECTIVE PAVEMENT MARKERS
- 886001 DETECTOR LOOP INSTALLATIONS
- 886006 TYPICAL LAYOUT FOR DETECTION LOOPS



PROJECT VOLLMER ROAD ENDS STA 66+85

PROJECT VOLLMER ROAD BEGINS STA 11+57.89



FULL SIZE PLANS HAVE BEEN PREPARED USING STANDARD ENGINEERING SCALES, REDUCED SIZED PLANS WILL NOT CONFORM TO STANDARD SCALES, IN MAKING MEASUREMENTS ON REDUCED PLANS, THE ABOVE SCALES MAY BE USED.

J. U. L. I. E.
JOINT UTILITY LOCATION INFORMATION FOR EXCAVATION
1-800-892-0123

CONTRACT NO. 83934

LOCATION MAP

— INDICATES PROPOSED IMPROVEMENT

GROSS LENGTH= 5,529 FEET = 1.05 MILES
NET LENGTH= 5,529 FEET = 1.05 MILES

VOLLMER ROAD ARTERIAL
ADT=12,100 (2007)
=12,100 (2030)
DESIGN SPEED=30 MPH
SPEED LIMIT= 30 MPH

I.D.O.T. FEDERAL AID DESIGN ENGINEER: KEVIN STALLWORTH 847-705-4169
CONSULTANTS: ROBINSON ENGINEERING, LTD. 708-331-6700
CONTACT ENGINEER: RON SMITH