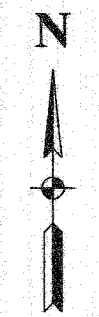
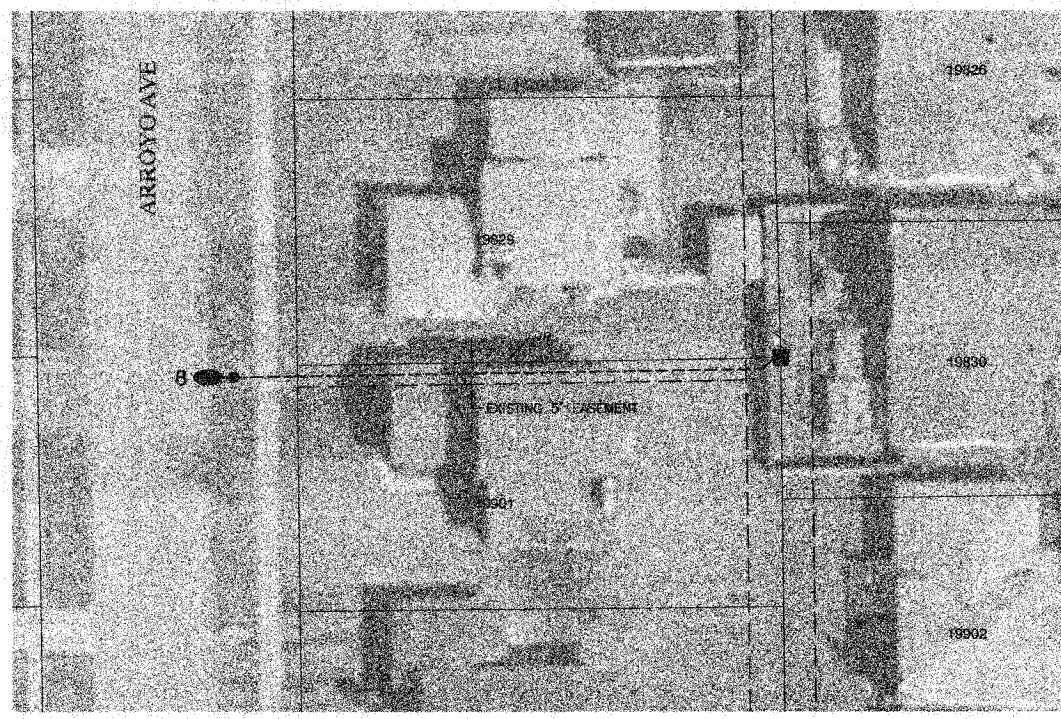
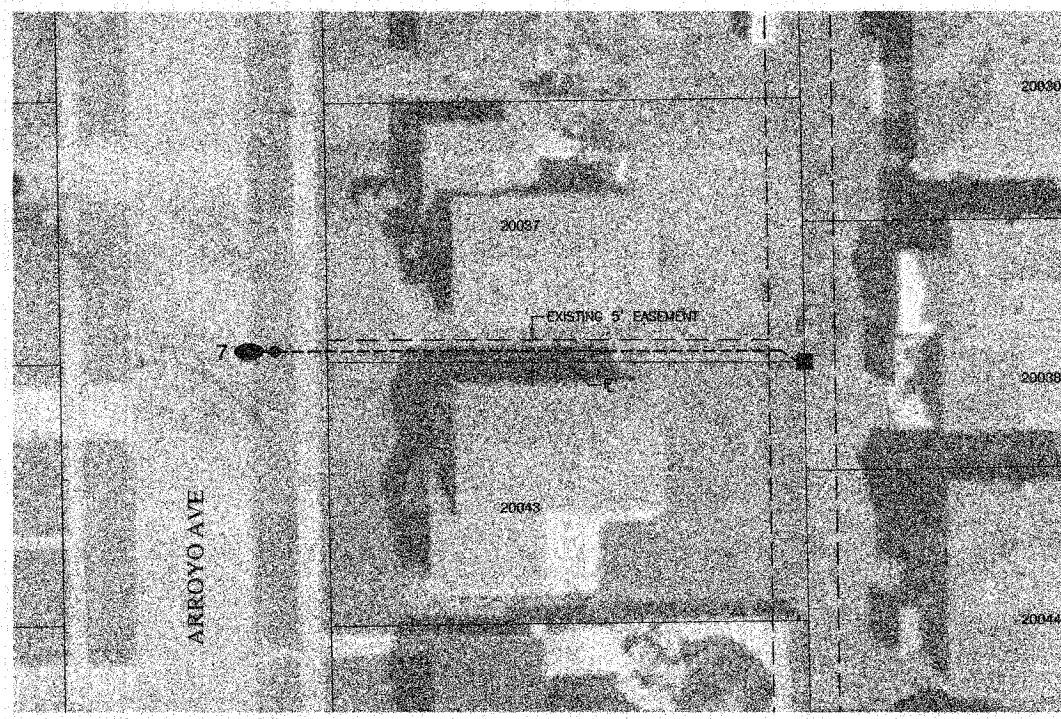
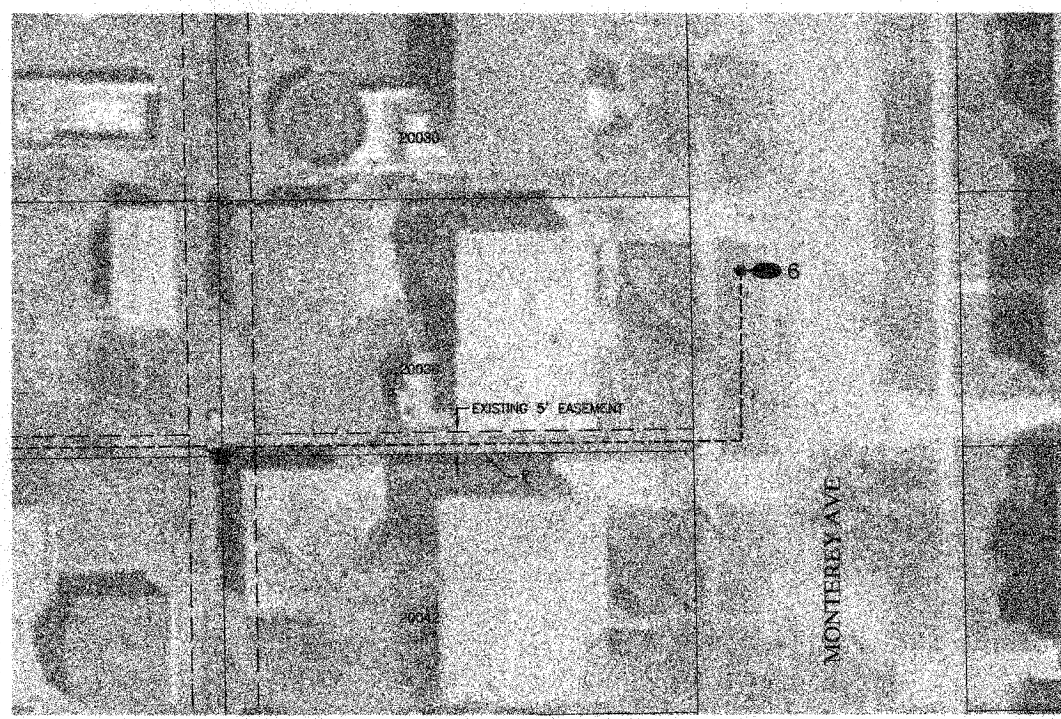
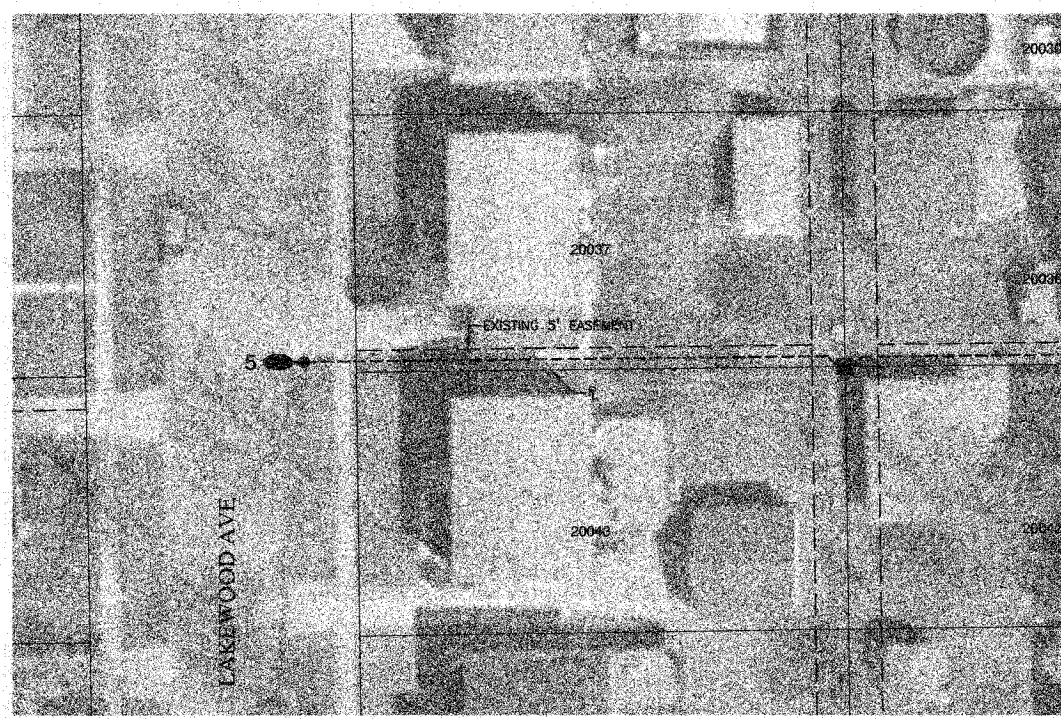


| | | | | |
|---------------------|----------------|----------|------------------|--------------|
| P. A. N. I. NO. | SECTION | COUNTY | TOWNSHIP | RANGE |
| | 05-00021-00-LT | COOK | 13 | 05 |
| FED. ROAD DIST. NO. | 1 | ILLINOIS | FED. AID PROJECT | HD-8003(535) |

CONTRACT NO. 83946



SCALE: 1" = 20'



- LEGEND**
- #●● PROPOSED LIGHT LOCATION
 - PROPOSED UNDERGROUND CABLE
 - EXISTING COMED PEDESTAL
 - EXISTING COMED TRANSFORMER
 - ⊕ EXISTING COMED POWER POLE
 - - - EXISTING UTILITY EASEMENT

Source: Cook County, Illinois 1:1200 - Scale
 2002 Parcels, Version 1.0, June 2002
 2003 Black & White Digital Orthimagery, 2003

ROBINSON ENGINEERING, LTD.
 CONSULTING REGISTERED PROFESSIONAL ENGINEERS
 AND PROFESSIONAL LAND SURVEYORS
 17000 SOUTH PARK AVENUE SOUTH HOLLAND, ILLINOIS 60473
 (708) 331-6700 FAX (708) 331-5626

© COPYRIGHT 2007
 ILLINOIS DESIGN FIRM REGISTRATION NO. 154001128

BEACON STREET LIGHTING
 MFT SECTION NO. 05-00021-00-LT
 PLAN SHEET
 LOCATIONS 5, 6, 7, & 8

LYNWOOD, ILLINOIS

Drawn by: RG Date: 03/27/07
 Checked by: EJT Scale: 1" = 20'
 Sheet: 05 of 13 Project No.: 05-488

| REVISIONS | | |
|-----------|------|---------|
| No. | Date | Remarks |
| | | |
| | | |
| | | |
| | | |
| | | |
| | | |
| | | |
| | | |
| | | |