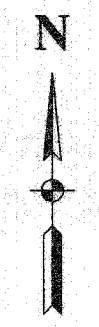
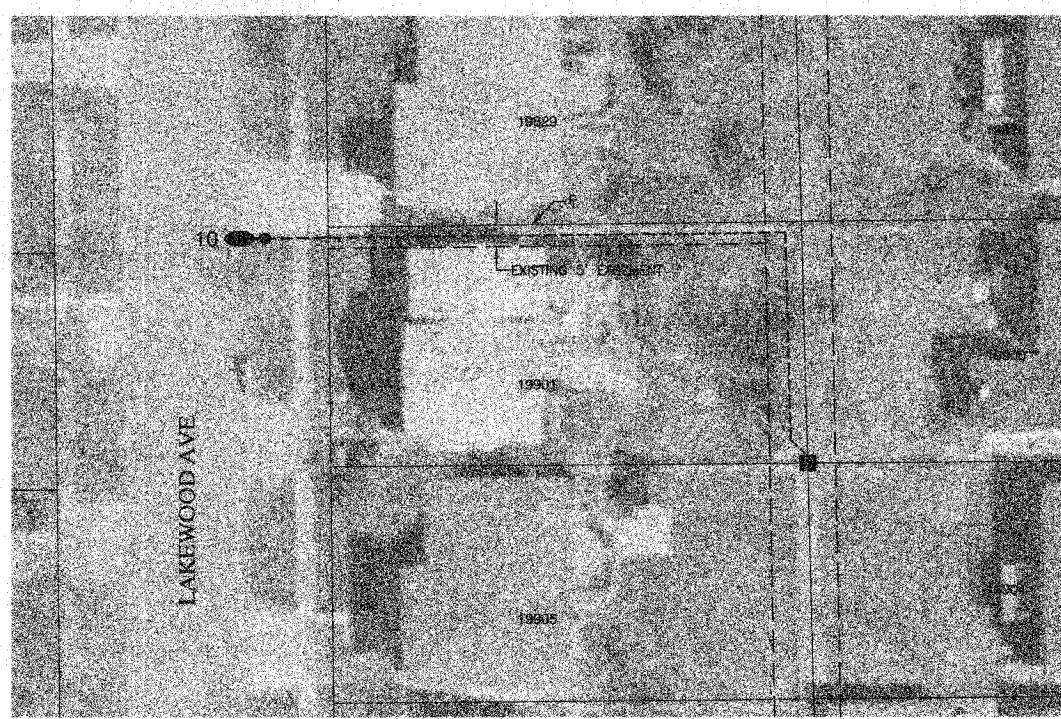
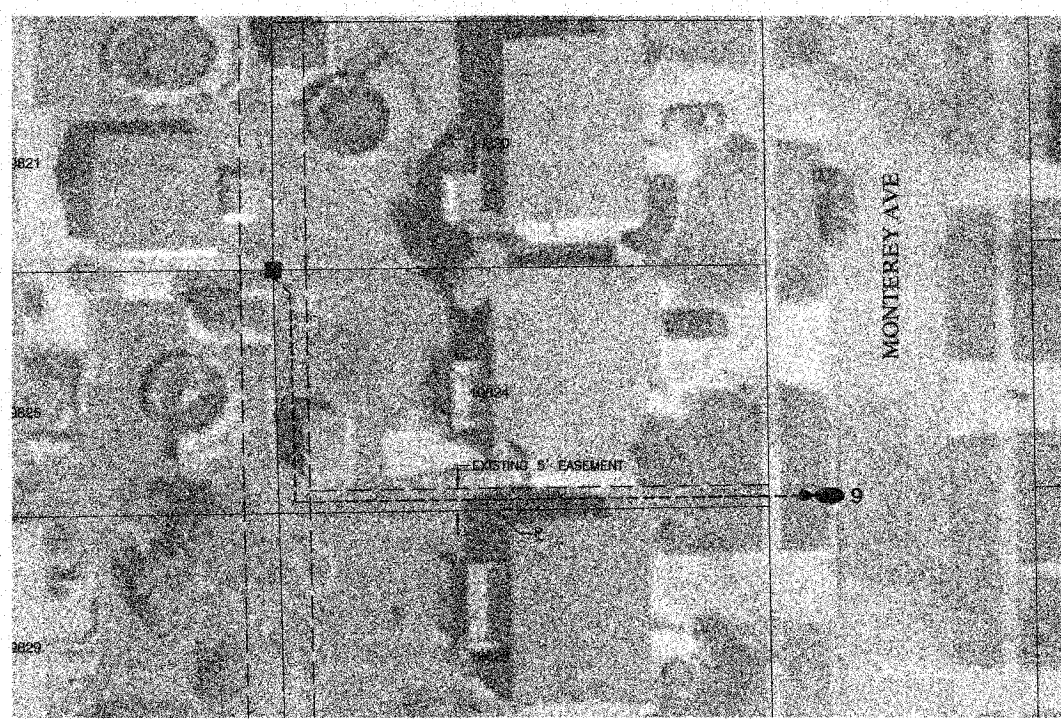


F. A. S. DIST.	SECTION	COUNTY	TOWNSHIP	SHEET NO.
	05-00021-00-LT	COOK	13	08
FED. ROAD DIST. NO. 1	LEAVES	FED. AID PROJECT	HD-8003(935)	

CONTRACT NO. 83946



SCALE: 1"=20'



- LEGEND**
- #●● PROPOSED LIGHT LOCATION
 - PROPOSED UNDERGROUND CABLE
 - EXISTING COMED PEDESTAL
 - EXISTING COMED TRANSFORMER
 - ⊕ EXISTING COMED POWER POLE
 - - - EXISTING UTILITY EASEMENT

Source: Cook County, Illinois 1:1200 - Scale
 2002 Parcels, Version 1.0, June 2002
 2003 Black & White Digital Orthimagery, 2003

ROBINSON ENGINEERING, LTD. CONSULTING REGISTERED PROFESSIONAL ENGINEERS AND PROFESSIONAL LAND SURVEYORS 17000 SOUTH PARK AVENUE SOUTH HOLLAND, ILLINOIS 60478 (708) 331-6700 FAX (708) 331-3826		REVISIONS No. Date Remarks	
© COPYRIGHT 2007 ILLINOIS DESIGN FIRM REGISTRATION NO. 154031128			
BEACON STREET LIGHTING MFT SECTION NO. 05-00021-00-LT PLAN SHEET LOCATIONS 9, 10, 11, & 12			
LYNWOOD, ILLINOIS			
Drawn by: RG	Date: 03/27/07		
Checked by: EJT	Scale: 1"=20'		
Sheet 06 of 13	Project No. 05-488		