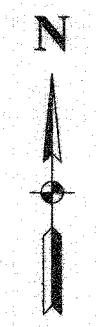
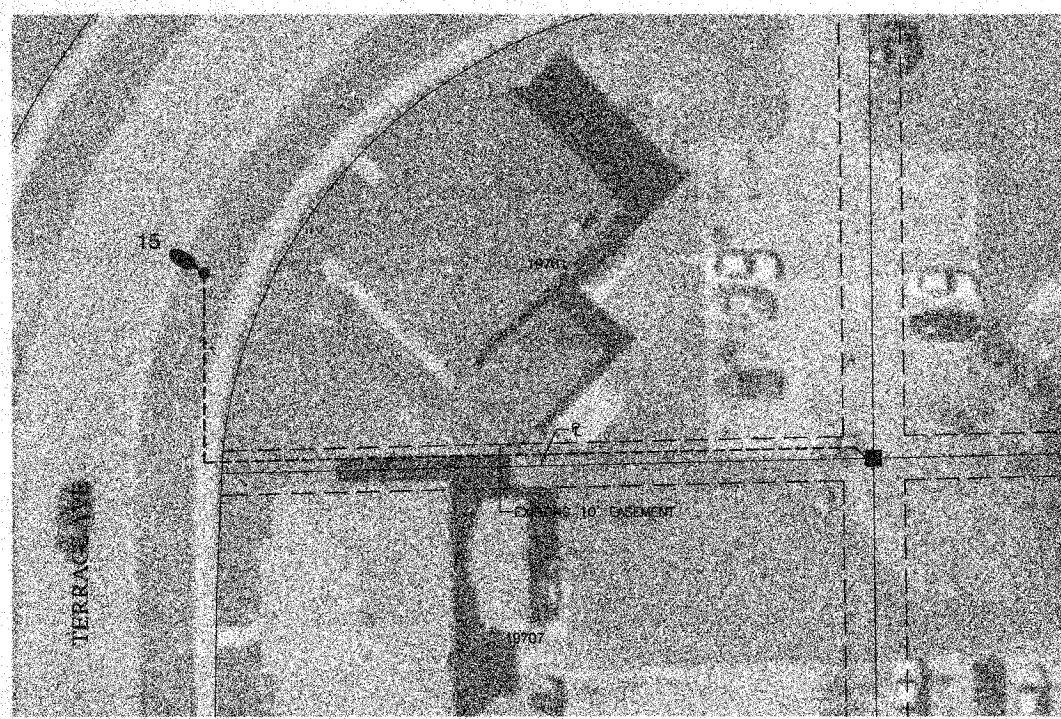
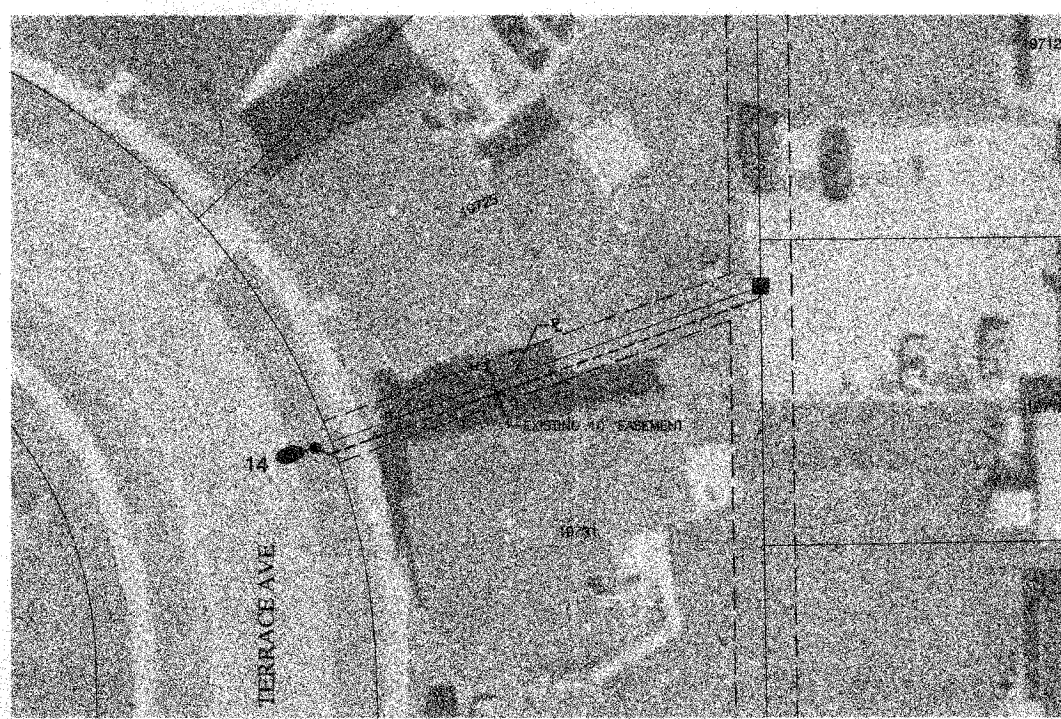
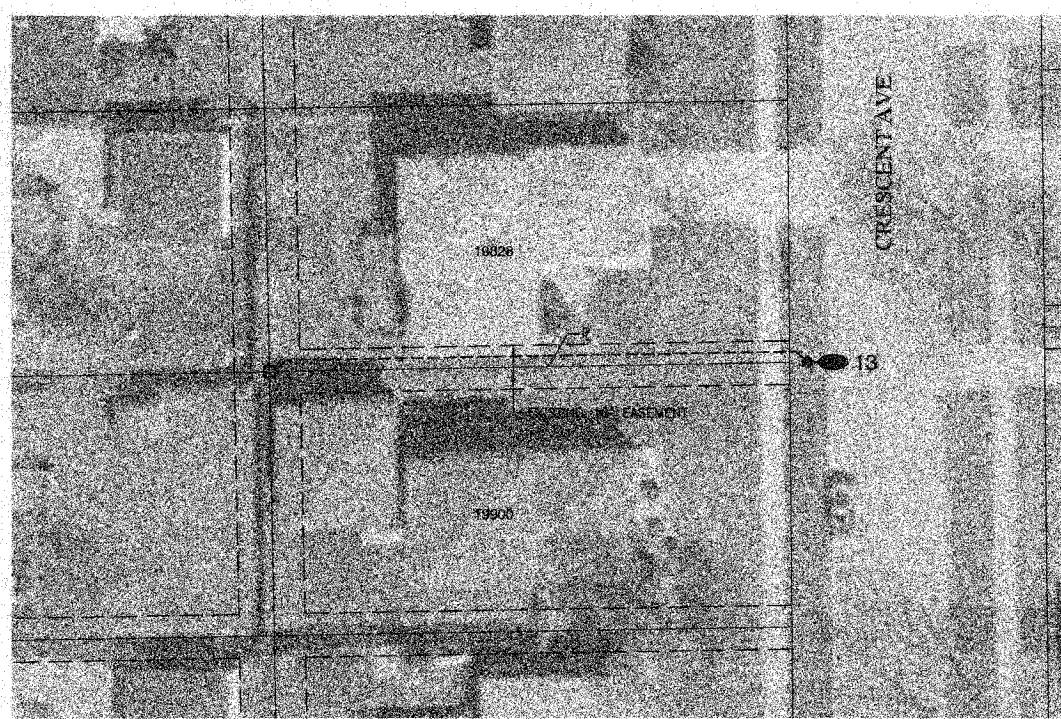


F. A. S. NO.	SECTION	COUNTY	TOTAL SHEETS	SHEET NO.
	05-00021-00-LT	COOK	13	07
FED. ROAD DIST. NO.	1	ALIMITE	FED. AID PROJECT	HD-8003(535)

CONTRACT NO. 83946



SCALE: 1"=20'



- LEGEND**
- #● PROPOSED LIGHT LOCATION
 - PROPOSED UNDERGROUND CABLE
 - EXISTING COMED PEDESTAL
 - EXISTING COMED TRANSFORMER
 - ⊕ EXISTING COMED POWER POLE
 - - - EXISTING UTILITY EASEMENT

Source: Cook County, Illinois 1:1200 - Scale
2002 Parcels, Version 1.0, June 2002
2005 Black & White Digital Orthimagery, 2003

ROBINSON ENGINEERING, LTD.
CONSULTING REGISTERED PROFESSIONAL ENGINEERS
AND PROFESSIONAL LAND SURVEYORS
17000 SOUTH PARK AVENUE, SOUTH HOLLAND, ILLINOIS 60470
(708) 331-8700 © COPYRIGHT 2007
ILLINOIS DESIGN FIRM REGISTRATION NO. 184021128

BEACON STREET LIGHTING
MFT SECTION NO. 05-00021-00-LT
PLAN SHEET
LOCATIONS 13, 14, 15, & 16
LYNWOOD, ILLINOIS

Drawn by: RG Date: 03/27/07
Checked by: EJT Scale: 1"=20'
Sheet 07 of 13 Project No. 05-488

REVISIONS		
No.	Date	Remarks