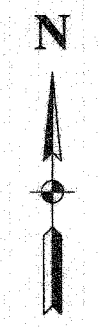


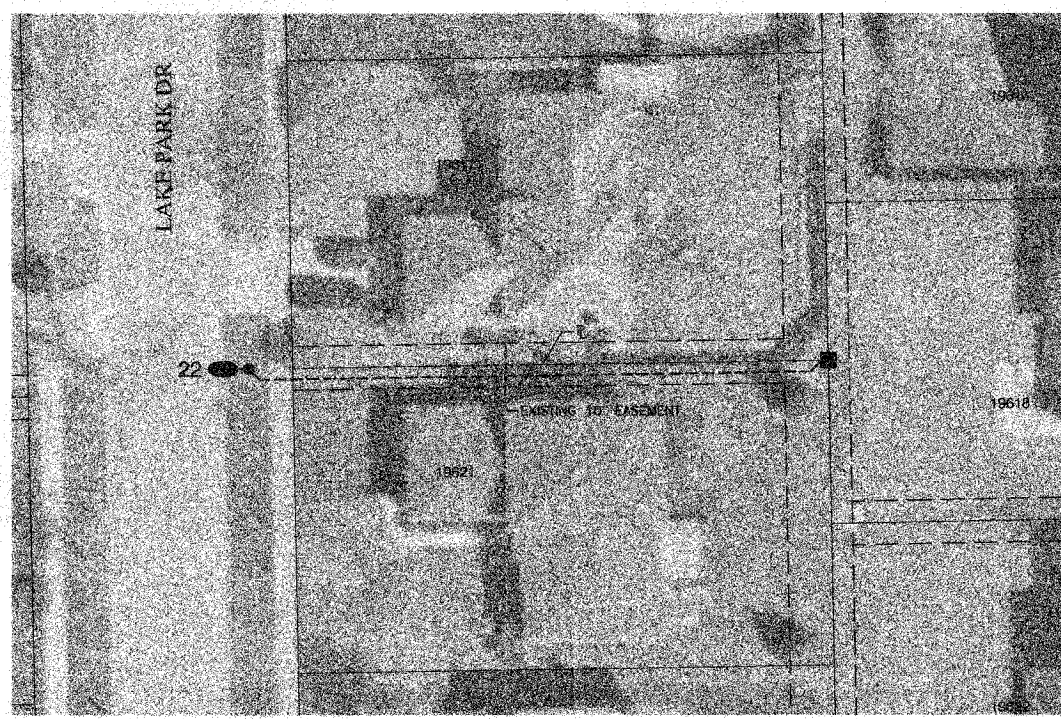
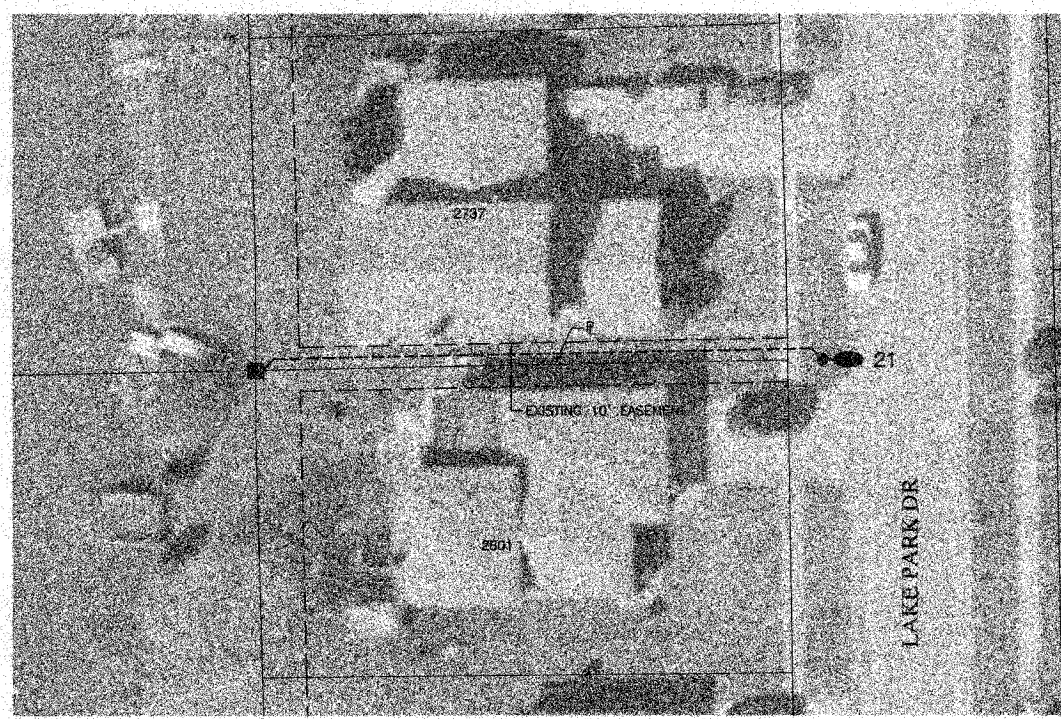
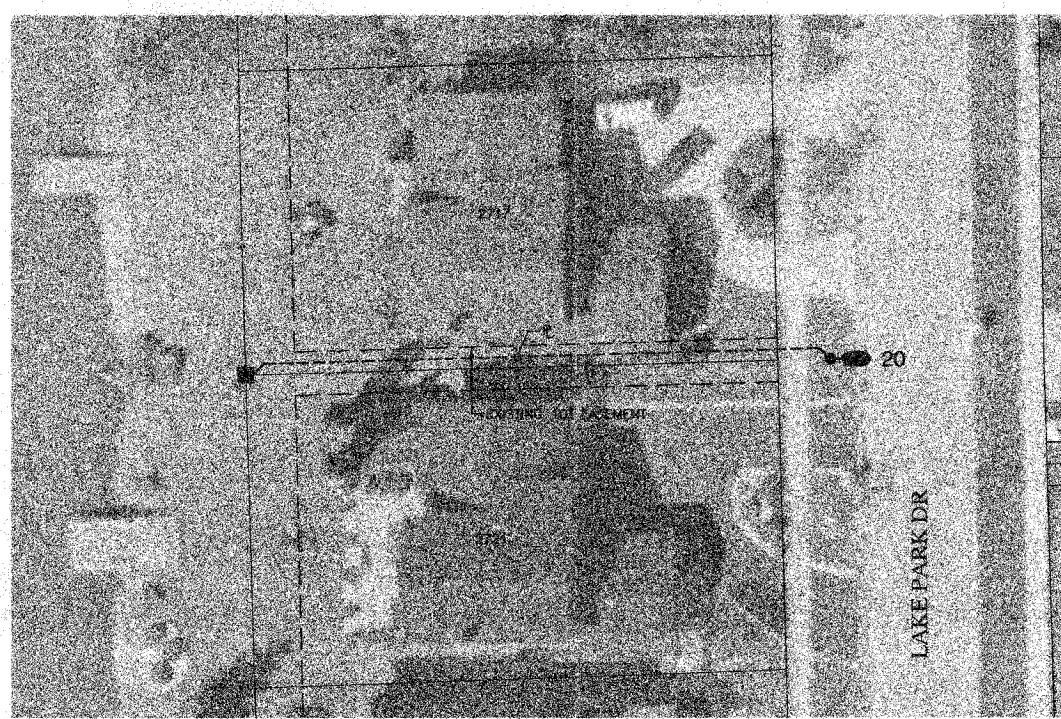
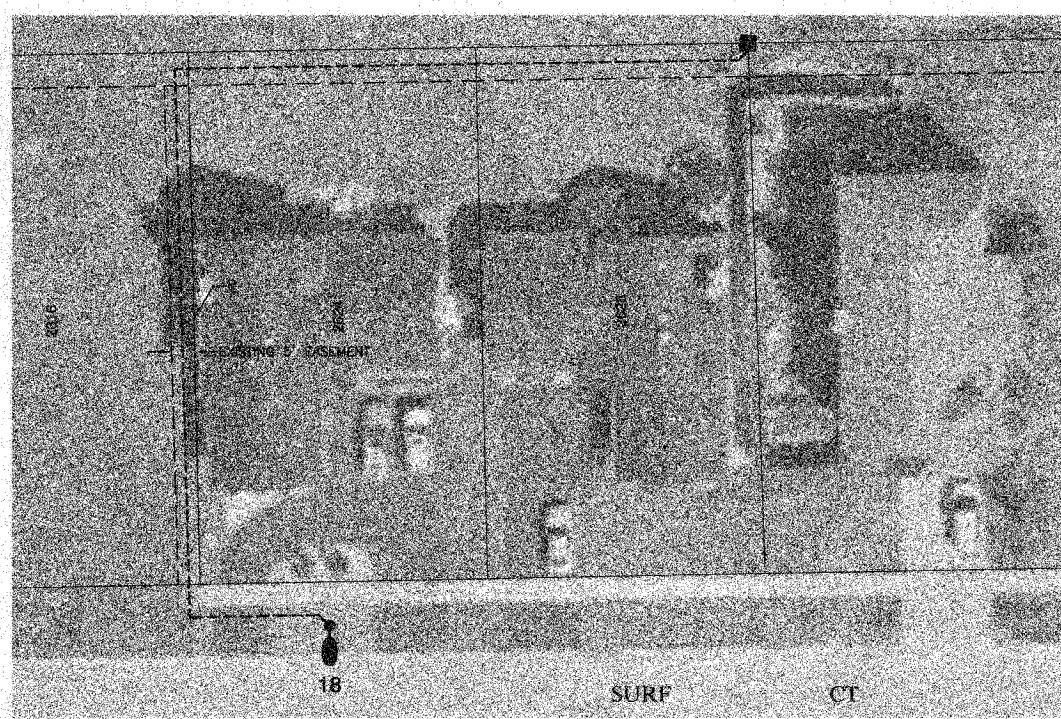


F. A. D. NO.	SECTION	COUNTY	TOTAL SHEETS	SHEET NO.
	05-00021-00-LT	COOK	13	08
FED. ROAD DIST. NO.	ILLINOIS	FED. AID PROJECT	HD-8003(535)	

CONTRACT NO. 83946



SCALE: 1"=20'



**LEGEND**

- #●● PROPOSED LIGHT LOCATION
- PROPOSED UNDERGROUND CABLE
- EXISTING COMED PEDESTAL
- EXISTING COMED TRANSFORMER
- ⊕ EXISTING COMED POWER POLE
- - - EXISTING UTILITY EASEMENT

Source: Cook County, Illinois 1:1200 - Scale  
2002 Parcels, Version 1.0, June 2002  
2003 Black & White Digital Orthomograpy, 2003

**ROBINSON ENGINEERING, LTD.**  
CONSULTING REGISTERED PROFESSIONAL ENGINEERS  
AND PROFESSIONAL LAND SURVEYORS  
17000 SOUTH PARK AVENUE SOUTH HOLLAND, ILLINOIS 60478  
(708) 391-6700 FAX (708) 391-3805  
© COPYRIGHT 2007  
ILLINOIS DESIGN FIRM REGISTRATION NO. 194001128

**BEACON STREET LIGHTING**  
MFT SECTION NO. 05-00021-00-LT  
PLAN SHEET  
LOCATIONS 18, 20, 21, & 22  
**LYNWOOD, ILLINOIS**

Drawn by: RG Date: 03/27/07  
Checked by: EJT Scale: 1"=20'  
Sheet 08 of 13 Project No.: 05-468

REVISIONS		
No.	Date	Remarks