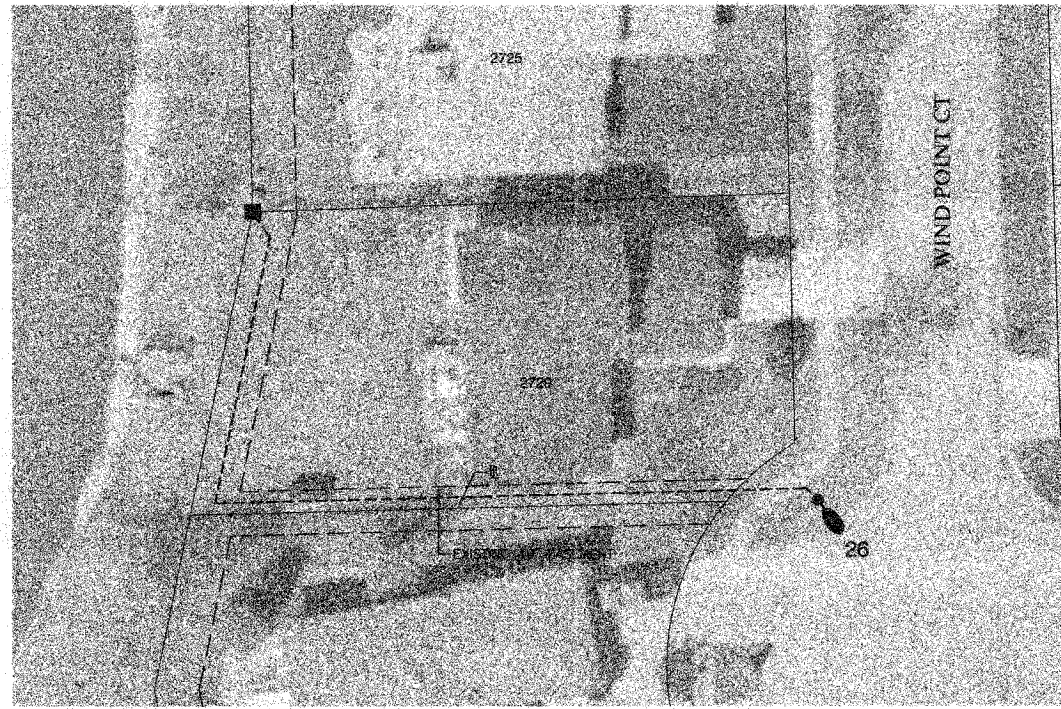
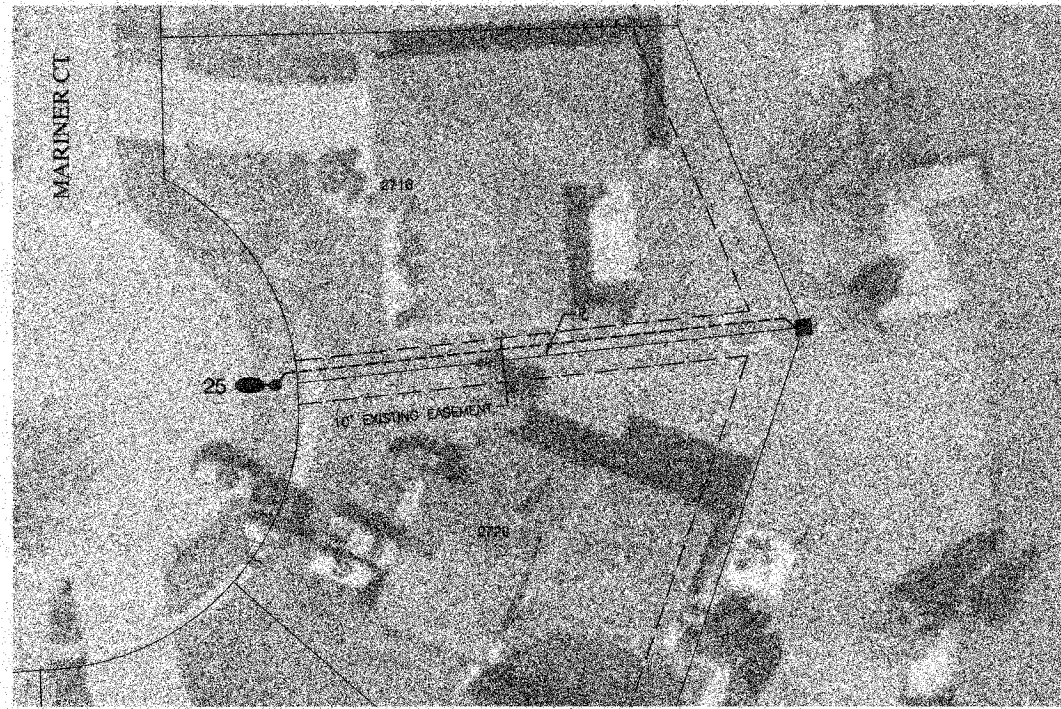
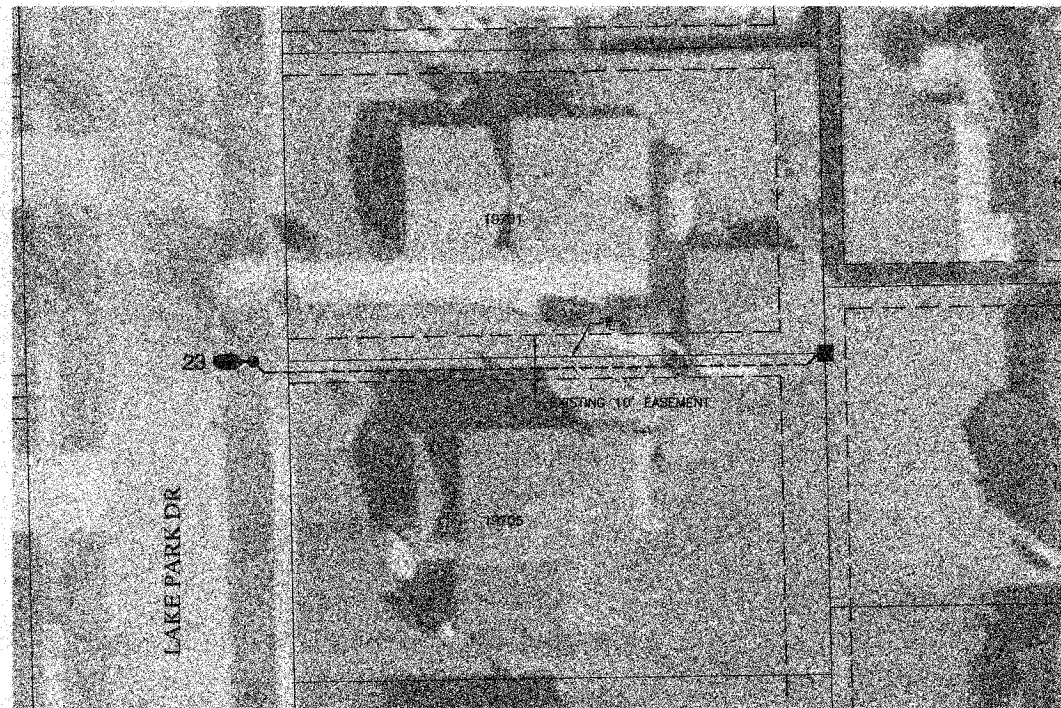


F. & S. FILE	SECTION	COUNTY	TOTAL SHEETS	SHEET NO.
	05-00021-00-LT	COOK	13	09
FED. ROAD DIST. NO. 1	ALSDIST	FED. AID PROJECT	HD-8003(535)	

CONTRACT NO. 83946



SCALE: 1"=20'



**LEGEND**

- #●● PROPOSED LIGHT LOCATION
- PROPOSED UNDERGROUND CABLE
- EXISTING COMED PEDESTAL
- EXISTING COMED TRANSFORMER
- ⊠ EXISTING COMED POWER POLE
- - - EXISTING UTILITY EASEMENT

Source: Cook County, Illinois 1:1200 - Scale  
2002 Parcels, Version 1.0, June 2002  
2003 Black & White Digital Orthomagnery, 2003

<b>ROBINSON ENGINEERING, LTD.</b> CONSULTING REGISTERED PROFESSIONAL ENGINEERS AND PROFESSIONAL LAND SURVEYORS 17000 SOUTH PARK AVENUE SOUTH HIGHLAND, ILLINOIS 60478 (708) 331-8700 FAX (708) 331-3526		<b>REVISIONS</b> No. Date Remarks	
© COPYRIGHT 2007 ILLINOIS DESIGN FIRM REGISTRATION NO. 194501128			
<b>BEACON STREET LIGHTING</b> MFT SECTION NO. 05-00021-00-LT PLAN SHEET LOCATIONS 23, 24, 25, & 26			
<b>LYNWOOD, ILLINOIS</b>			
Drawn by: RG	Date: 03/27/07		
Checked by: EJT	Scale: 1"=20'		
Sheet 09 of 13	Project No. 05-486		