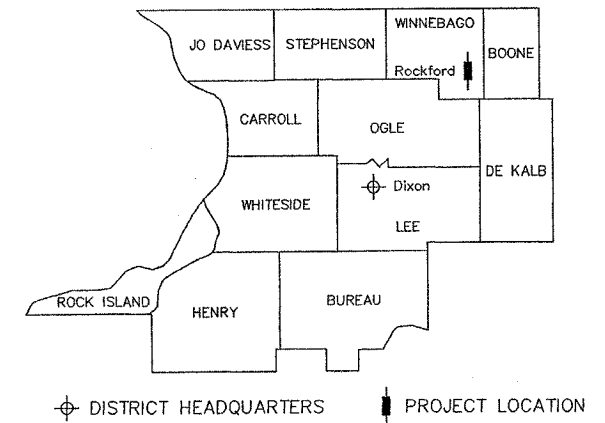


STATE OF ILLINOIS
WINNEBAGO COUNTY HIGHWAY DEPARTMENT



PLANS FOR PROPOSED
OLD RIVER RD/LATHAM RD INTERSECTION

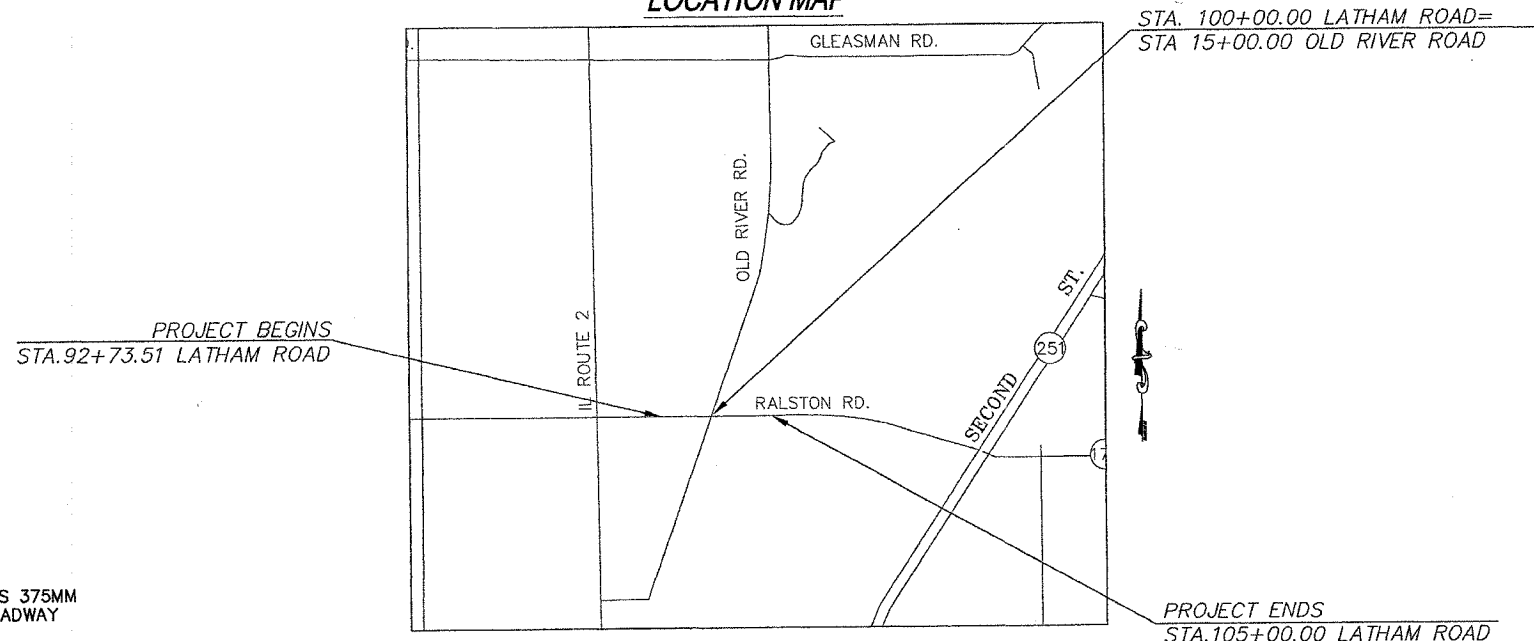
FAU 5031 (LATHAM ROAD)
SECTION 06-00408-00-SP
PROJECT NO. HS-5031 (001)
JOB NO. C-92-006-07
CONTRACT NO. 85412



INDEX OF SHEETS

No.	SHEET NAME
1	TITLE SHEET
2	GENERAL NOTES
3	SUMMARY OF QUANTITIES
4	TYPICAL SECTION
5	PLAN AND PROFILE - LATHAM ROAD (WEST LEG)
6	PLAN AND PROFILE - LATHAM ROAD (INTERSECTION)
7	PLAN AND PROFILE - LATHAM ROAD (EAST LEG)
8	PLAN AND PROFILE - OLD RIVER ROAD
9	STRIPING PLAN - LATHAM ROAD
10	LIGHTING PLAN - LATHAM ROAD
11	CROSS SECTIONS - LATHAM ROAD
12	CROSS SECTIONS - LATHAM ROAD
13	CROSS SECTIONS - OLD RIVER ROAD
14-19	DETAIL SHEETS

LOCATION MAP



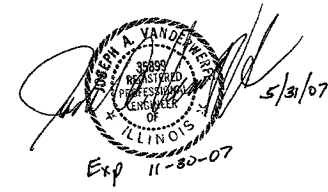
T45N, R1E,
SEC.'S 13, 24

PROJECT LENGTH = 1226.49 FT. (LATHAM ROAD)

FUNCTIONAL CLASSIFICATION:

LATHAM ROAD - PRINCIPAL ARTERIAL - ADT 12,200 (2007) <2% TRUCKS
DESIGN SPEED = 45 MPH
OLD RIVER ROAD - LOCAL COLLECTOR - ADT 7,400 (2007) <2% TRUCKS
DESIGN SPEED = 45 MPH

CALL J.U.L.I.E.
BEFORE YOU DIG
1-800-892-0123



STANDARDS

(STANDARDS IN PROPOSAL)

- 280001-03 TEMPORARY EROSION CONTROL SYSTEMS
- 442201-02 CLASS C AND D PATCHES
- 482001-01 HMA SHOULDER ADJACENT TO FLEXIBLE PAVEMENT
- 542101-01 REINFORCED CONCRETE END SECTIONS FOR PIPE CULVERTS 375MM (15") THRU 900MM (36") DIA. AT RIGHT ANGLES WITH ROADWAY
- 542301-01 PRECAST REINFORCED CONCRETE END SECTION
- 542401 METAL END SECTION FOR PIPE CULVERTS
- 604001-02 FRAME AND LIDS TYPE 1
- 606001-03 CONCRETE CURB TYPE B & COMBINATION CONCRETE CURB & GUTTER
- 60C006-01 OUTLETS FOR CONCRETE CURB & GUTTER TYPE B 15.60(B-6.24)
- 606301-03 PC CONCRETE ISLANDS AND MEDIANS
- 701006-02 OFF-RD OPERATIONS, 2L, 2W, 4.5M (15') TO 600MM (24") FROM PAVEMENT EDGE
- 701011-01 OFF-RD MOVING OPERATIONS, 2L, 2W, DAY ONLY
- 701201-02 LANE CLOSURE, 2L, 2W, DAY ONLY, FOR SPEEDS ≥ 45 MPH
- 701301-02 LANE CLOSURE, 2L, 2W, SHORT TIME OPERATIONS
- 701306-01 LANE CLOSURE, 2L, 2W, SLOW MOVING OPERATIONS DAY ONLY, FOR SPEEDS ≥ 45 MPH
- 701311-02 LANE CLOSURE, 2L, 2W, MOVING OPERATIONS-DAY ONLY
- 701326-02 LANE CLOSURE, 2L, 2W, PAVEMENT WIDENING, FOR SPEEDS ≥ 45 MPH
- 701701-04 URBAN LANE CLOSURE, MULTILANE INTERSECTION
- 702001-06 TRAFFIC CONTROL DEVICES
- 720011 METAL POSTS FOR SIGNS, MARKERS & DELINEATORS
- 728001 TELESCOPING STEEL SIGN SUPPORT
- 729001 APPLICATIONS OF TYPES A&B METAL POSTS (FOR SIGNS & MARKERS)
- 780001-01 TYPICAL PAVEMENT MARKINGS
- 781001-02 TYPICAL APPLICATIONS RAISED REFLECTIVE PAVEMENT MARKERS
- 805001 ELETRICAL SERVICE INSTALLATION DETAILS

THESE PLANS PREPARED BY:
WINNEBAGO COUNTY HIGHWAY DEPARTMENT

APPROVED May 31, 2007
[Signature]
WINNEBAGO COUNTY ENGINEER

PASSED JUN 7 2007
[Signature]
DISTRICT 2 ENGINEER OF LOCAL ROADS & STREETS

RELEASING FOR BID
BASED ON LIMITED REVIEW JUN 7 2007
[Signature]
DEPUTY DIRECTOR OF HIGHWAYS, REGION 2 ENGINEER