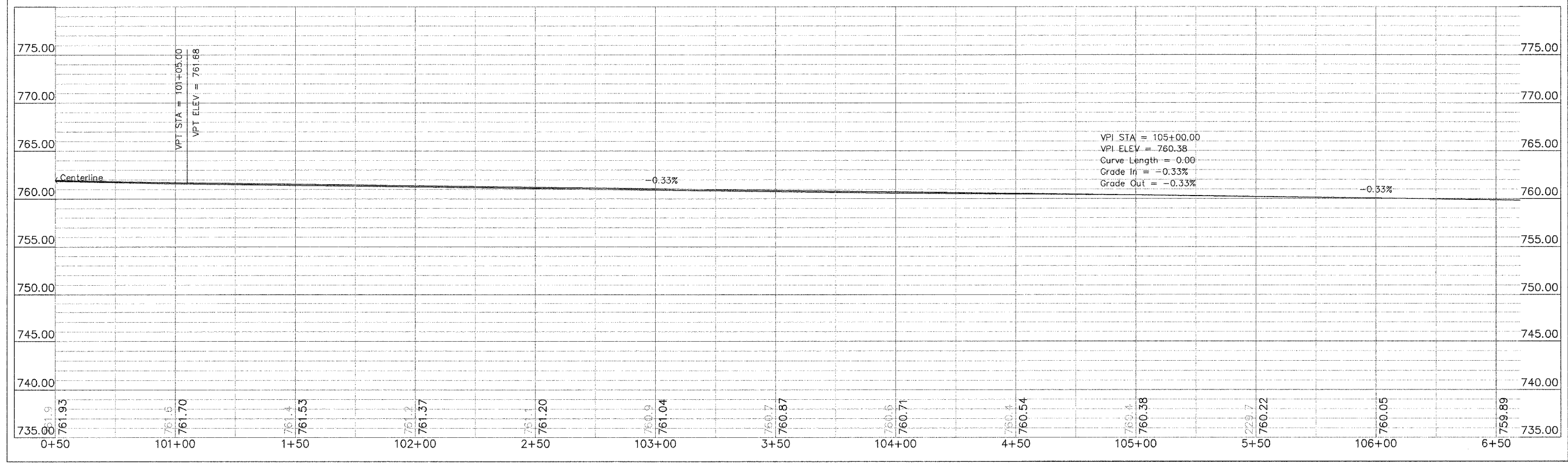


PROJECT ENDS:
LATHAM ROAD
STA. 105+00.00

LATHAM ROAD STA. = 100+00.00
OLD RIVER ROAD STA. = 15+00.00

SCALES:
1" = 20' HOR
1" = 5' VER

NOTE:
INLETS AT STA. 105+00 Rt & Lt
ARE TO REMAIN UNDISTURBED.
ACTUAL CURB & GUTTER REMOVAL
SHALL END AT THE NEAREST INLET
CONSTRUCTION JOINT



Vertical Curve Data: Sta 101+05.00, Elev 761.88; Sta 105+00.00, Elev 760.38; Curve Length 0.00; Grade In -0.33%; Grade Out -0.33%.