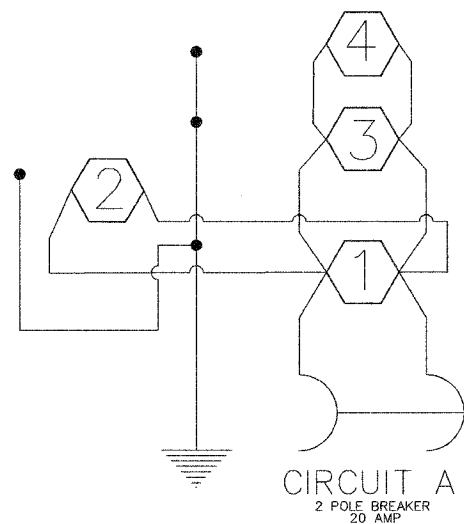




UTILITY OFFICIALS

- | | |
|---|--|
| <p>GAS:
 NICOR GAS COMPANY
 1844 FERRY ROAD
 NAPERVILLE, IL. 60563
 (630) 983-8676 x2362
 (630) 983-4028 fax</p> | <p>WATER:
 CITY OF ROCKFORD PUBLIC WORKS
 425 E. STATE STREET
 ROCKFORD, IL. 61104
 (815) 961-3766</p> |
| <p>ELECTRIC:
 COMMONWEALTH EDISON COMPANY
 123 ENERGY AVENUE
 ROCKFORD, IL. 61109
 (815) 490-2257</p> | <p>CABLE TELEVISION:
 INSIGHT COMMUNICATIONS
 811 21ST STREET
 ROCKFORD, IL. 61101
 (815) 962-4400 (x2012)</p> |
| <p>TELEPHONE:
 AMERITECH / SBC-IL
 2404 8TH. AVENUE
 ROCKFORD, IL. 61108
 (815) 394-7264</p> | <p>SEWER:
 ROCK RIVER WATER RECLAMATION DISTRICT
 3333 KISHWAUKEE STREET
 ROCKFORD, IL. 61109
 (815) 397-9700</p> |

CABLE DIAGRAM

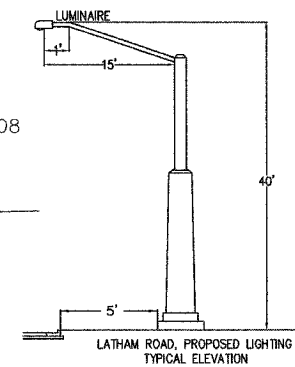
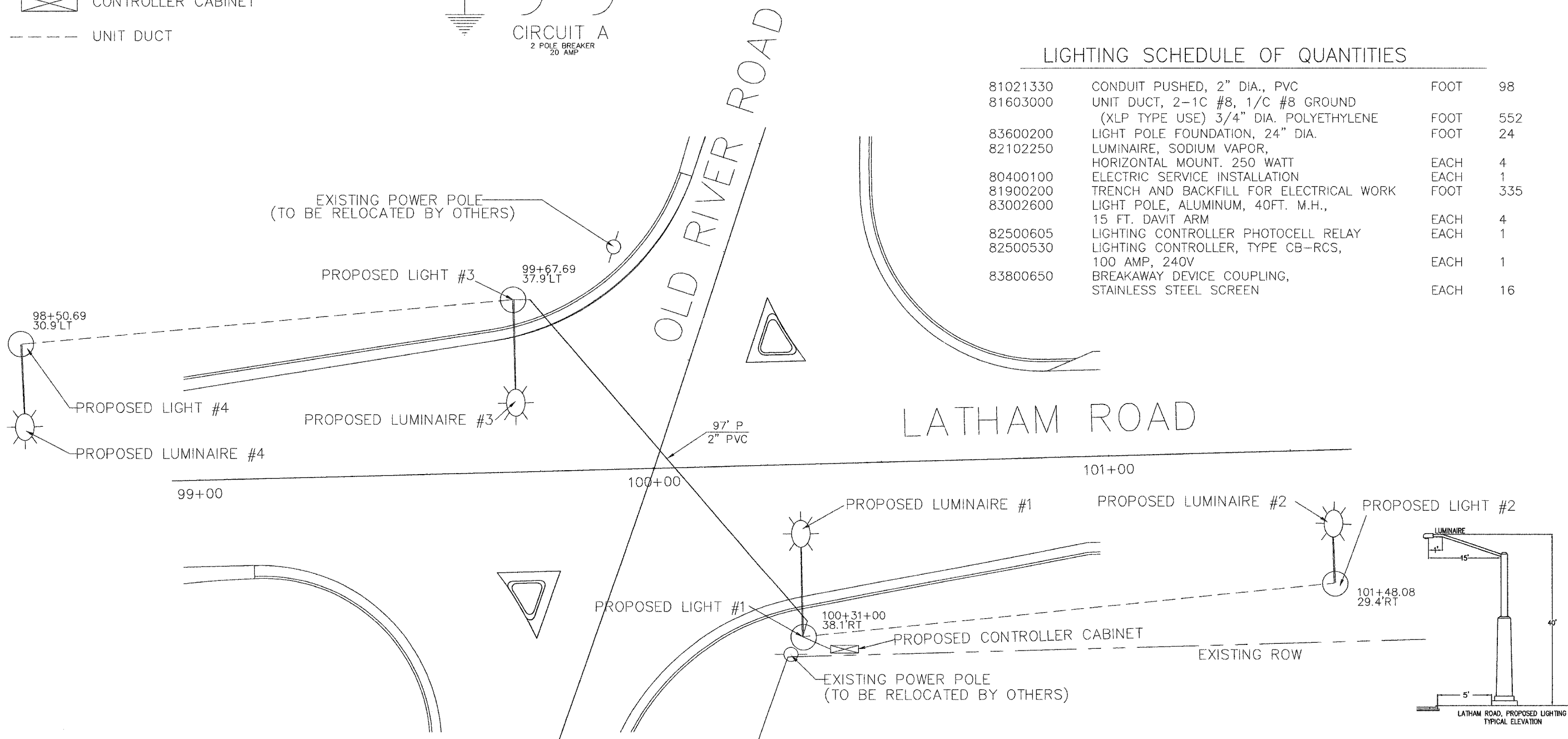


LEGEND

- PROPOSED LUMINAIRE
- PROPOSED LIGHT BASE
- PROPOSED CONTROLLER CABINET
- UNIT DUCT

LIGHTING SCHEDULE OF QUANTITIES

81021330	CONDUIT PUSHED, 2" DIA., PVC	FOOT	98
81603000	UNIT DUCT, 2-1C #8, 1/C #8 GROUND (XLP TYPE USE) 3/4" DIA. POLYETHYLENE	FOOT	552
83600200	LIGHT POLE FOUNDATION, 24" DIA.	FOOT	24
82102250	LUMINAIRE, SODIUM VAPOR, HORIZONTAL MOUNT, 250 WATT	EACH	4
80400100	ELECTRIC SERVICE INSTALLATION	EACH	1
81900200	TRENCH AND BACKFILL FOR ELECTRICAL WORK	FOOT	335
83002600	LIGHT POLE, ALUMINUM, 40FT. M.H., 15 FT. DAVIT ARM	EACH	4
82500605	LIGHTING CONTROLLER PHOTOCELL RELAY	EACH	1
82500530	LIGHTING CONTROLLER, TYPE CB-RCS, 100 AMP, 240V	EACH	1
83800650	BREAKAWAY DEVICE COUPLING, STAINLESS STEEL SCREEN	EACH	16



L:\Users\p\p\Projects\2016\17\17-00408-00-SP\17-00408-00-SP-10.dwg, 10/20/16, 10:00 AM, 10/20/16, 10:00 AM