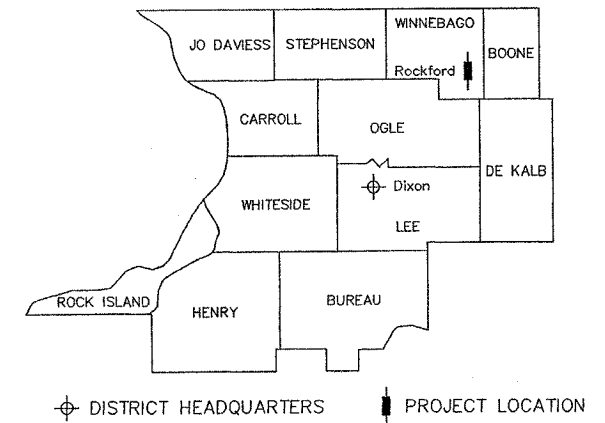


STATE OF ILLINOIS
WINNEBAGO COUNTY HIGHWAY DEPARTMENT



PLANS FOR PROPOSED
OLD RIVER RD/LATHAM RD INTERSECTION

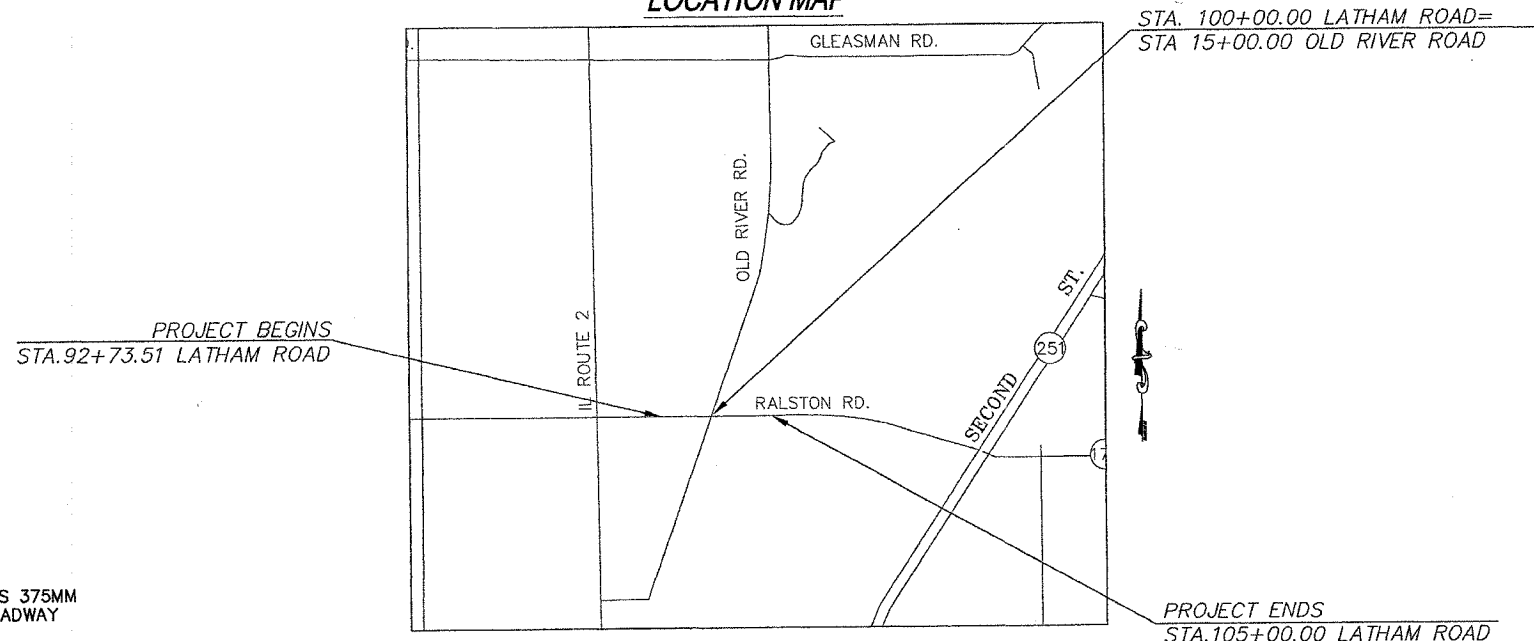
FAU 5031 (LATHAM ROAD)
SECTION 06-00408-00-SP
PROJECT NO. HS-5031 (001)
JOB NO. C-92-006-07
CONTRACT NO. 85412



INDEX OF SHEETS

No.	SHEET NAME
1	TITLE SHEET
2	GENERAL NOTES
3	SUMMARY OF QUANTITIES
4	TYPICAL SECTION
5	PLAN AND PROFILE - LATHAM ROAD (WEST LEG)
6	PLAN AND PROFILE - LATHAM ROAD (INTERSECTION)
7	PLAN AND PROFILE - LATHAM ROAD (EAST LEG)
8	PLAN AND PROFILE - OLD RIVER ROAD
9	STRIPING PLAN - LATHAM ROAD
10	LIGHTING PLAN - LATHAM ROAD
11	CROSS SECTIONS - LATHAM ROAD
12	CROSS SECTIONS - LATHAM ROAD
13	CROSS SECTIONS - OLD RIVER ROAD
14-19	DETAIL SHEETS

LOCATION MAP



T45N, R1E,
SEC.'S 13, 24

PROJECT LENGTH = 1226.49 FT. (LATHAM ROAD)

FUNCTIONAL CLASSIFICATION:

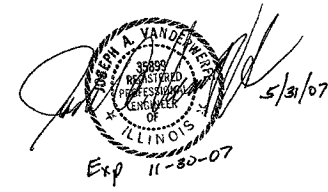
LATHAM ROAD - PRINCIPAL ARTERIAL - ADT 12,200 (2007) <2% TRUCKS
DESIGN SPEED = 45 MPH
OLD RIVER ROAD - LOCAL COLLECTOR - ADT 7,400 (2007) <2% TRUCKS
DESIGN SPEED = 45 MPH

STANDARDS

(STANDARDS IN PROPOSAL)

- 280001-03 TEMPORARY EROSION CONTROL SYSTEMS
- 442201-02 CLASS C AND D PATCHES
- 482001-01 HMA SHOULDER ADJACENT TO FLEXIBLE PAVEMENT
- 542101-01 REINFORCED CONCRETE END SECTIONS FOR PIPE CULVERTS 375MM (15") THRU 900MM (36") DIA. AT RIGHT ANGLES WITH ROADWAY
- 542301-01 PRECAST REINFORCED CONCRETE END SECTION
- 542401 METAL END SECTION FOR PIPE CULVERTS
- 604001-02 FRAME AND LIDS TYPE 1
- 606001-03 CONCRETE CURB TYPE B & COMBINATION CONCRETE CURB & GUTTER
- 60C006-01 OUTLETS FOR CONCRETE CURB & GUTTER TYPE B 15.60(B-6.24)
- 606301-03 PC CONCRETE ISLANDS AND MEDIANS
- 701006-02 OFF-RD OPERATIONS, 2L, 2W, 4.5M (15') TO 600MM (24") FROM PAVEMENT EDGE
- 701011-01 OFF-RD MOVING OPERATIONS, 2L, 2W, DAY ONLY
- 701201-02 LANE CLOSURE, 2L, 2W, DAY ONLY, FOR SPEEDS ≥ 45 MPH
- 701301-02 LANE CLOSURE, 2L, 2W, SHORT TIME OPERATIONS
- 701306-01 LANE CLOSURE, 2L, 2W, SLOW MOVING OPERATIONS DAY ONLY, FOR SPEEDS ≥ 45 MPH
- 701311-02 LANE CLOSURE, 2L, 2W, MOVING OPERATIONS-DAY ONLY
- 701326-02 LANE CLOSURE, 2L, 2W, PAVEMENT WIDENING, FOR SPEEDS ≥ 45 MPH
- 701701-04 URBAN LANE CLOSURE, MULTILANE INTERSECTION
- 702001-06 TRAFFIC CONTROL DEVICES
- 720011 METAL POSTS FOR SIGNS, MARKERS & DELINEATORS
- 728001 TELESCOPING STEEL SIGN SUPPORT
- 729001 APPLICATIONS OF TYPES A&B METAL POSTS (FOR SIGNS & MARKERS)
- 780001 TYPICAL PAVEMENT MARKINGS
- 781001-02 TYPICAL APPLICATIONS RAISED REFLECTIVE PAVEMENT MARKERS
- 805001 ELECTRICAL SERVICE INSTALLATION DETAILS

CALL J.U.L.I.E.
BEFORE YOU DIG
1-800-892-0123



THESE PLANS PREPARED BY:
WINNEBAGO COUNTY HIGHWAY DEPARTMENT

APPROVED May 31, 2007
Stephen A. Vanderweide
WINNEBAGO COUNTY ENGINEER

PASSED JUN 7 2007
John F. J...
DISTRICT 2 ENGINEER OF LOCAL ROADS & STREETS

RELEASING FOR BID
BASED ON LIMITED REVIEW JUN 7 2007
John F. J...
DEPUTY DIRECTOR OF HIGHWAYS, REGION 2 ENGINEER



CONSTRUCTION TYPE CODE: 1000

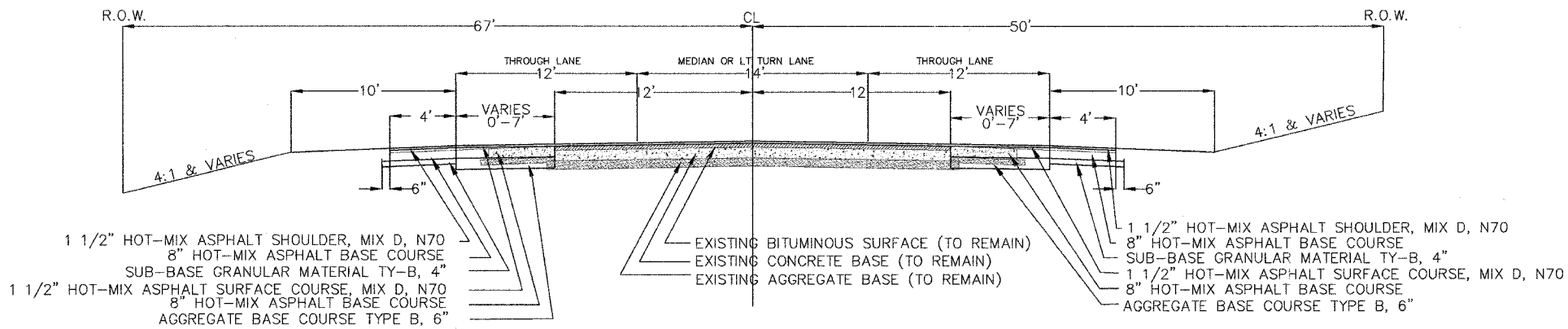
Item #	Items	Unit	Quantity								
20200100	EARTH EXCAVATION	CU YD	2150.00								
20800150	TRENCH BACKFILL	CU YD	77.00								
21001000	GEOTECHNICAL FABRIC FOR GROUND STABILIZATION	SQ YD	650.00								
21101615	TOP SOIL, FURNISH AND PLACE 4"	SQ YD	3112.00								
25000100	SEEDING CLASS 1	ACRE	0.70								
25000400	NITROGEN FERTILIZER NUTRIENT	LB	58.00								
25000500	PHOSPHORUS FERTILIZER NUTRIENT	LB	58.00								
25000600	POTASSIUM FERTILIZER NUTRIENT	LB	58.00								
25100105	MULCH METHOD 1	ACRE	0.70								
28000400	PERIMETER EROSION BARRIER	FOOT	600.00								
31101200	SUB BASE GRANULAR MATERIAL, TY-B, 4"	SQ YD	1312.00								
35102000	AGGREGATE BASE COURSE TY-B, 8"	SQ YD	1888.00								
40600100	BITUMINOUS MATERIALS (PRIME COAT)	GAL	465.00								
40600300	AGGREGATE PRIME COAT	TON	5.00								
40603085	HOT-MIX ASPHALT BASE COURSE, MIX "D", N70	TON	846.00								
40603340	HOT-MIX ASPHALT SURFACE COURSE, MIX "D", N70	TON	521.00								
40800050	INCIDENTAL HOT-MIX ASPHALT SURFACING	TON	17.00								
44000080	HOT-MIX ASPHALT SURFACE REMOVAL (COLD MILLING)	SQ YD	188.00								
44000100	PAVEMENT REMOVAL	SQ YD	621.00								
44000500	COMBINATION CURB AND GUTTER REMOVAL	FOOT	1221.00								
48101600	AGGREGATE SHOULDERS, TYPE B, 8"	SQ YD	132.00								
48203003	HOT-MIX ASPHALT SHOULDERS, MIX "D", N70	SQ YD	587.00								
50105220	PIPE CULVERT REMOVAL	FOOT	68.00								
54200643	PIPE CULVERTS, T-1, CS/AL CULVERT PIPE, 18"	FOOT	60.00								
54213660	PRECAST REINFORCED CONC. FLARED END SEC 15"	EACH	3.00								
54213663	PRECAST REINFORCED CONC. FLARED END SEC 18"	EACH	1.00								
54213873	STEEL END SECTIONS 18"	EACH	4.00								
550A0050	STORM SEWERS, CLASS A, TYPE 1 12"	FOOT	260.00								
550A0070	STORM SEWERS, CLASS A, TYPE 1 15"	FOOT	154.00								
550A0090	STORM SEWERS, CLASS A, TYPE 1 18"	FOOT	8.00								
60243000	INLET SPECIAL, TYPE 2	EACH	5.00								
60258000	MANHOLES TO BE RECONSTRUCTED (SPECIAL)	EACH	1.00								
60500090	REMOVING INLETS TO MAINTAIN FLOW	EACH	3.00								
60600095	CLASS SI CONCRETE (OUTLET)	CU YD	14.00								
60608600	COMB CONCRETE CURB AND GUTTER TY M-6.06	FOOT	56.00								
60610400	COMB CONCRETE CURB AND GUTTER TY B-6.24	FOOT	1344.00								
60625800	ISLAND PAVEMENT, (SPECIAL)	SQ YD	8.00								
67100100	MOBILIZATION	L SUM	1.00								
70101700	TRAFFIC CONTROL AND PROTECTION	L SUM	1.00								
70300100	SHORT-TERM PAVEMENT MARKING	FOOT	4592.00								
* 78000100	THERMOPLASTIC PAVEMENT MARKING-LTR AND SYM	SQ FT	62.40								
* 78000200	THERMOPLASTIC PAVEMENT MARKING-LINE 4"	FOOT	7463.00								
* 78000500	THERMOPLASTIC PAVEMENT MARKING-LINE 8"	FOOT	821.00								
* 78000650	THERMOPLASTIC PAVEMENT MARKING-LINE 24"	FOOT	132.00								
* 78100100	RAISED REFLECTIVE PAVEMENT MARKER	EACH	156.00								
* 80400100	ELECTRIC SERVICE INSTALLATION	EACH	1.00								
* 81021330	CONDUIT PUSHED, 2" DIA., PVC	FOOT	98.00								
* 81603000	UNIT DUCT, 2-1C NO.8, 1/C NO.8, GROUND (XPL-TYPE USE) 3/4" DIA POLYETHYLENE	FOOT	552.00								
* 81900200	TRENCH AND BACKFILL FOR ELECTRICAL WORK	FOOT	335.00								
* 82102250	LUMINAIRE, SODIUM VAPOR, HM, 250 WATT	EACH	4.00								
* 82500530	LIGHTING CONTROLLER, TYPE CB-RCS, 100AMF, 240 VOLT	EACH	1.00								
* 82500605	LIGHTING CONTROLLER, PHOTOCELL RELAY	EACH	1.00								
* 83002600	LIGHT POLE, ALUMINUM, 4CFT. MH., 15FT. DAVIT ARM	EACH	4.00								
* 83600200	LIGHT POLE FOUNDATION, 24" DIA.	FOOT	24.00								
* 83800650	BREAKAWAY DEVICE COUPLING, SS SCREEN	EACH	16.00								
X0322936	REMOVE EXISTING FLARED END SECTION	EACH	2.00								
XX003140	SHORT-TERM PAVEMENT MARKING REMOVAL	FOOT	4592.00								
XX005064	CLASS D PATCHES	SQ YD	43.00								
Z0013798	CONSTRUCTION LAYOUT	L SUM	1.00								

* SPECIALTY ITEMS



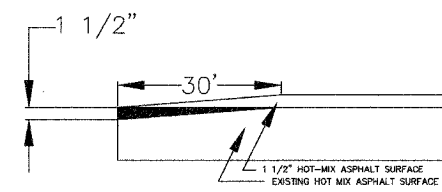
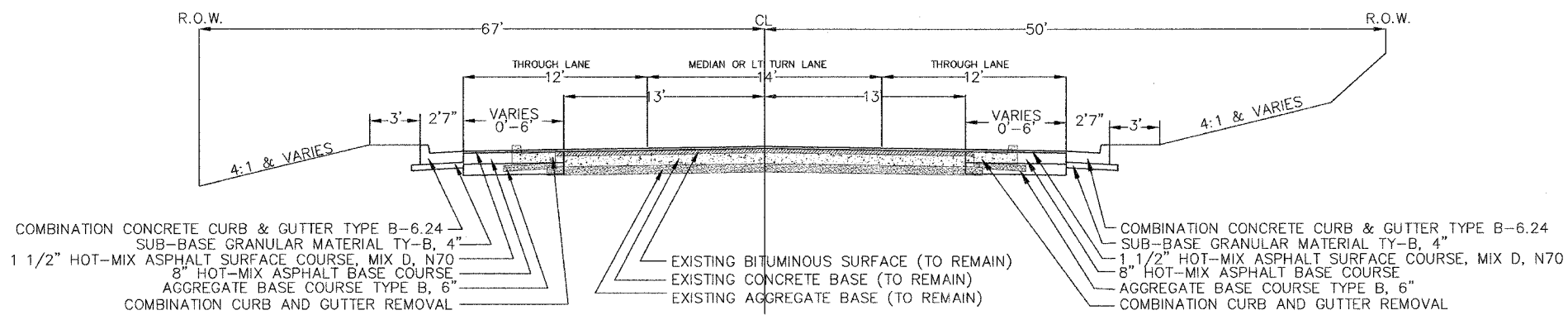
PROPOSED TYPICAL SECTION

LATHAM ROAD
STA. 92+73.51-100+00.00

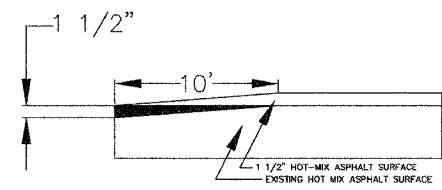


PROPOSED TYPICAL SECTION

LATHAM ROAD
STA. 100+00.00-105+00.00



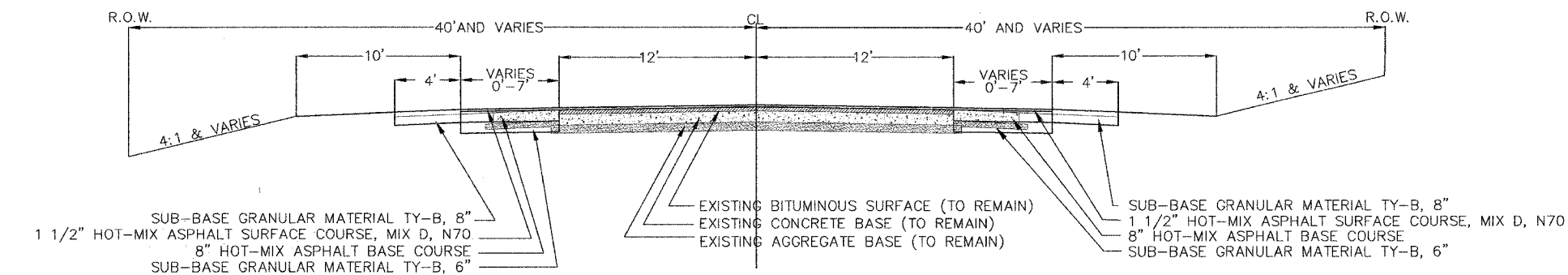
TYPICAL BUTT JOINT
LATHAM ROAD



TYPICAL BUTT JOINT
DRIVEWAYS AND ENTRANCES

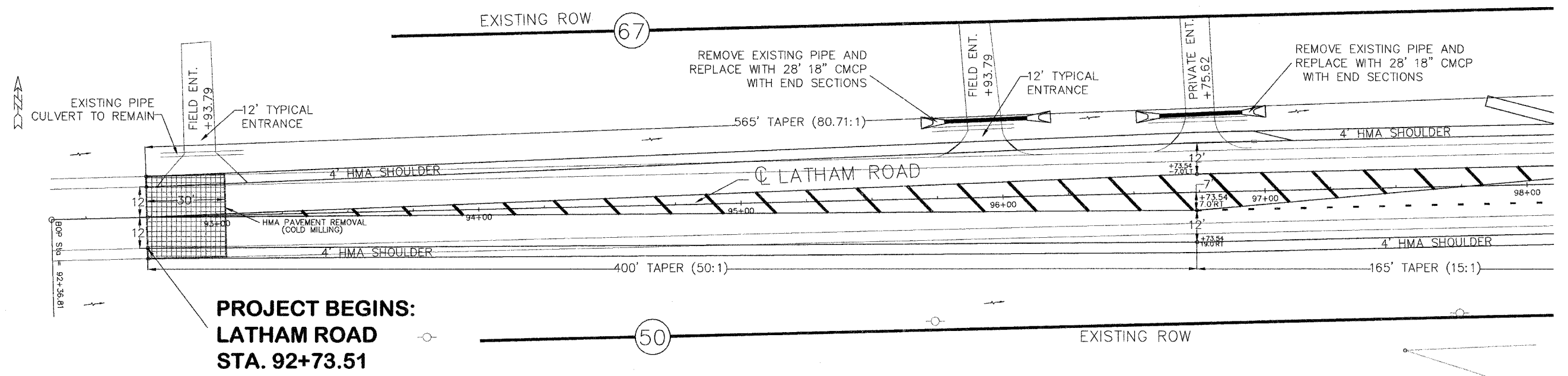
PROPOSED TYPICAL SECTION

OLD RIVER ROAD
STA. 13+00.00-16+40.50

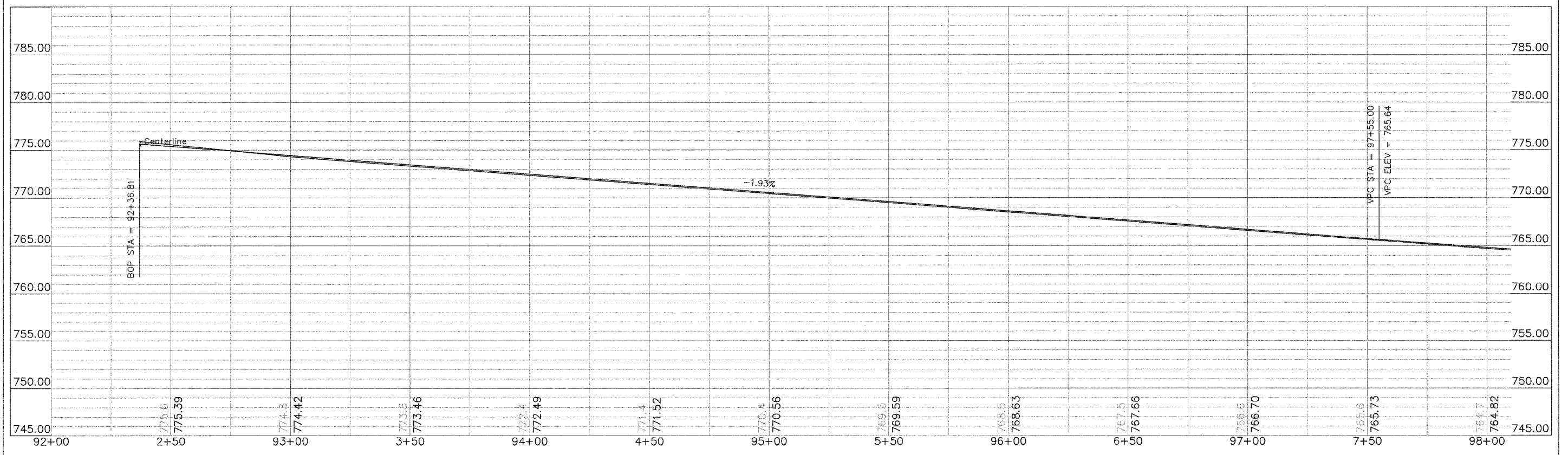


MIXTURE USE (S):	SURFACE	BINDER
PG:	PG 64-22	PG 64-22
DESIGN AIR VOIDS:	4.0 @ N70	4.0 @ N70
MIXTURE COMPOSITION (GRADATION MIXTURE):	IL 9.5 or 12.5	IL 19.0
FRICTION AGGREGATE:	D	N/A
20 YEAR ESAL:	0.7	0.7
MIX UNIT WEIGHT	112 lbs/cy/ft	

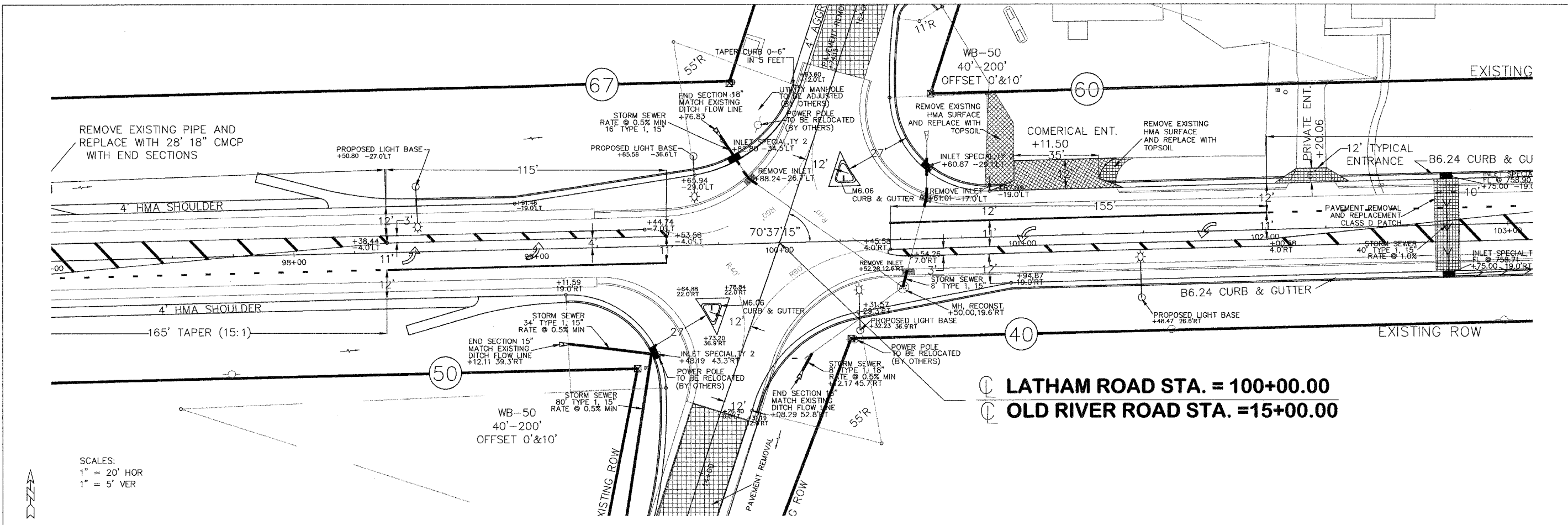
Vertical: 1.000, Horizontal: 1.000, Scale: 1/8" = 1'-0", Date: 11/18/2022, 9:25:20 AM, Project: 22-007, 03/18/22, 11/18/22



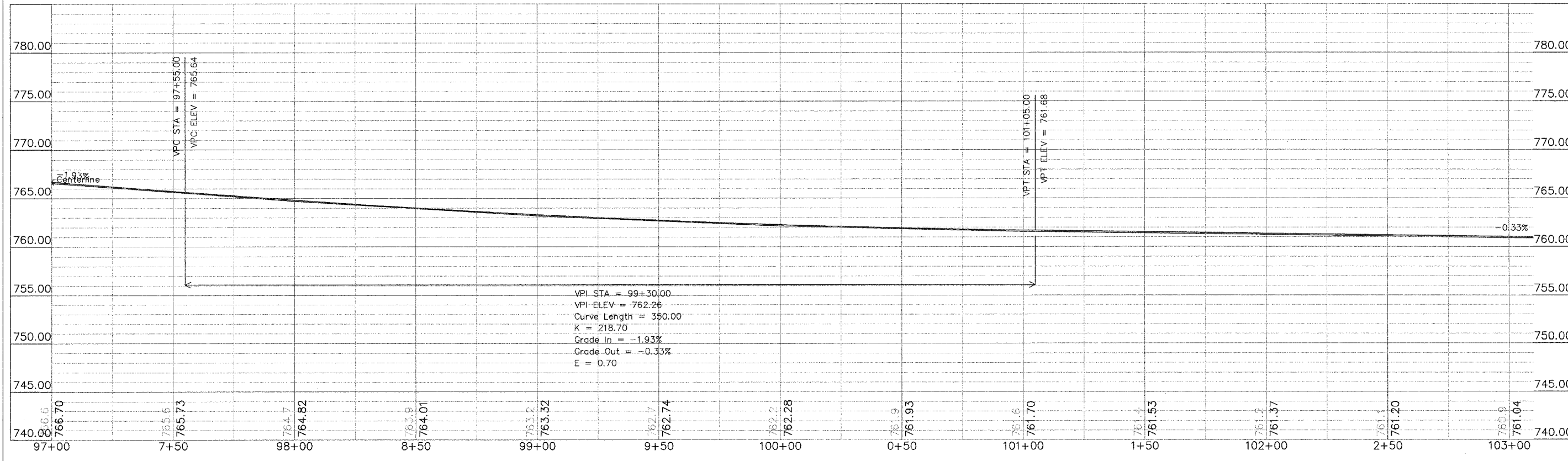
SCALES:
1" = 20' HOR
1" = 5' VER



LATHAM ROAD PLAN & PROFILE SHEET

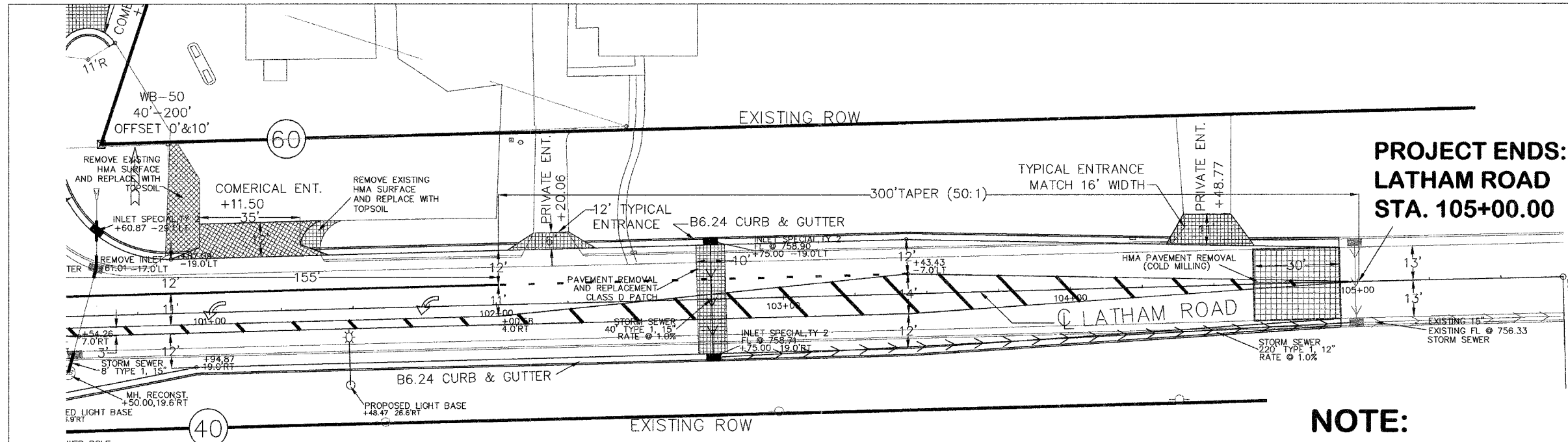


SCALES:
1" = 20' HOR
1" = 5' VER



LATHAM ROAD PLAN & PROFILE SHEET

1: Winnebago County, IL, Latham Road, Sta 97+00.00 to 103+00.00, 6/18/2007, 25x40, 1/4" = 1' (Plan), 1/8" = 1' (Profile)

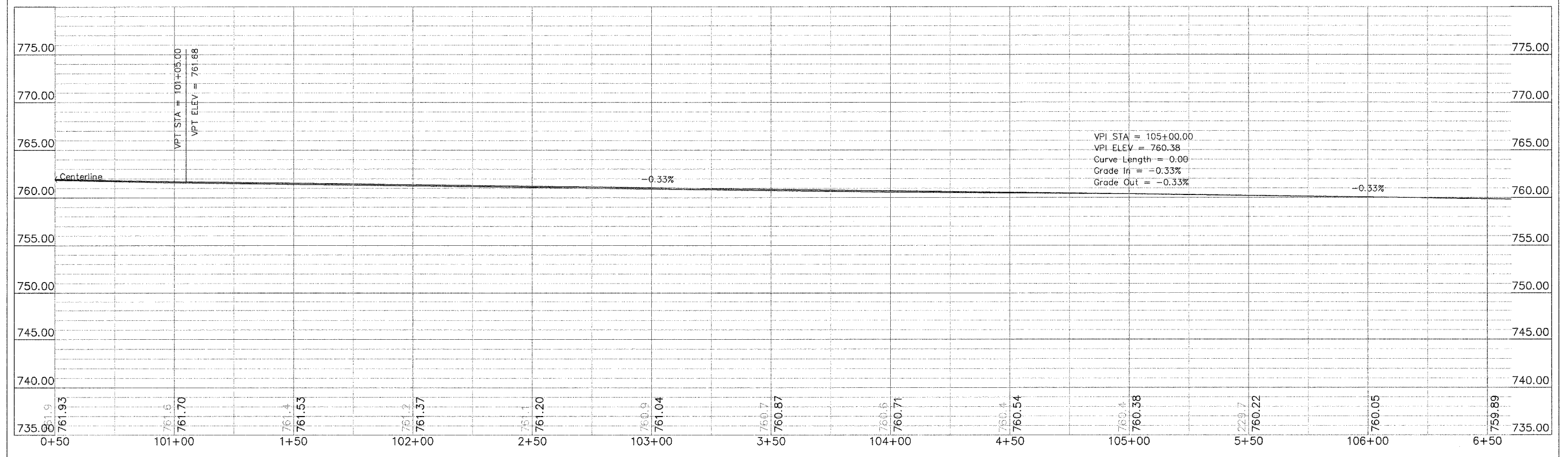


**PROJECT ENDS:
LATHAM ROAD
STA. 105+00.00**

LATHAM ROAD STA. = 100+00.00
OLD RIVER ROAD STA. = 15+00.00

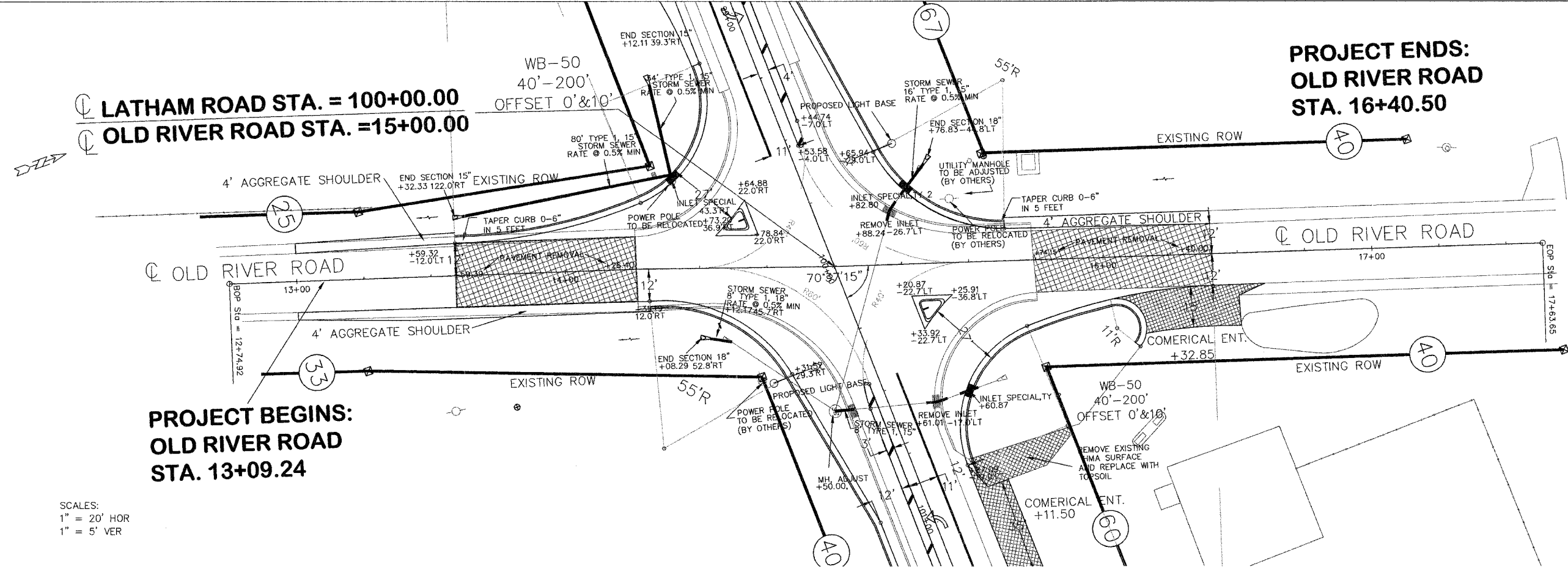
SCALES:
1" = 20' HOR
1" = 5' VER

NOTE:
INLETS AT STA. 105+00 Rt & Lt
ARE TO REMAIN UNDISTURBED.
ACTUAL CURB & GUTTER REMOVAL
SHALL END AT THE NEAREST INLET
CONSTRUCTION JOINT

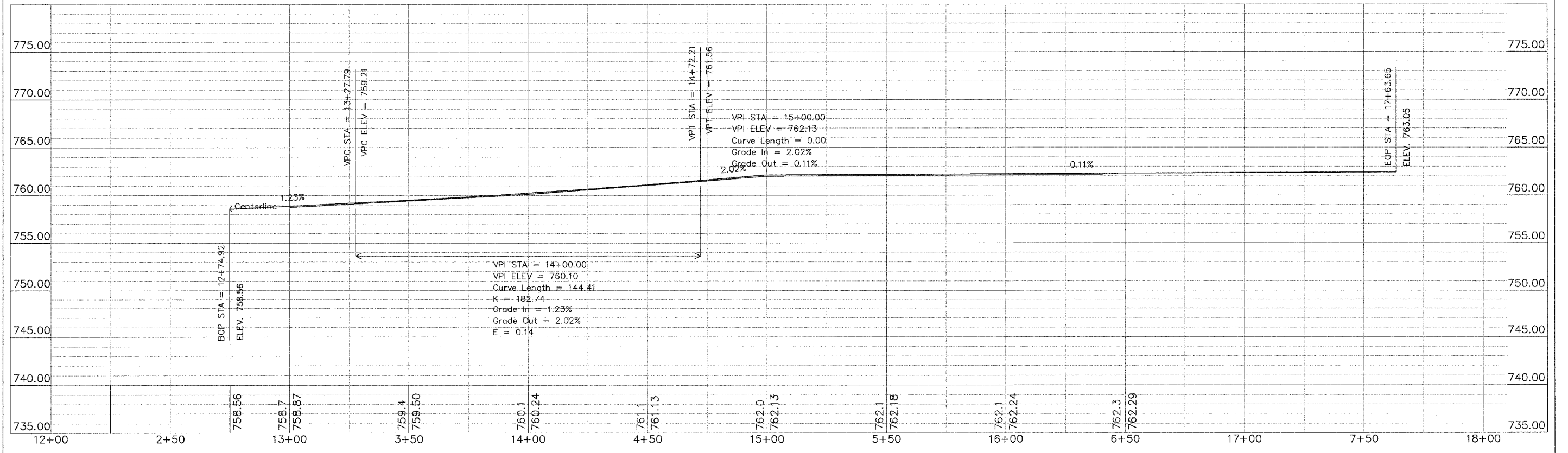


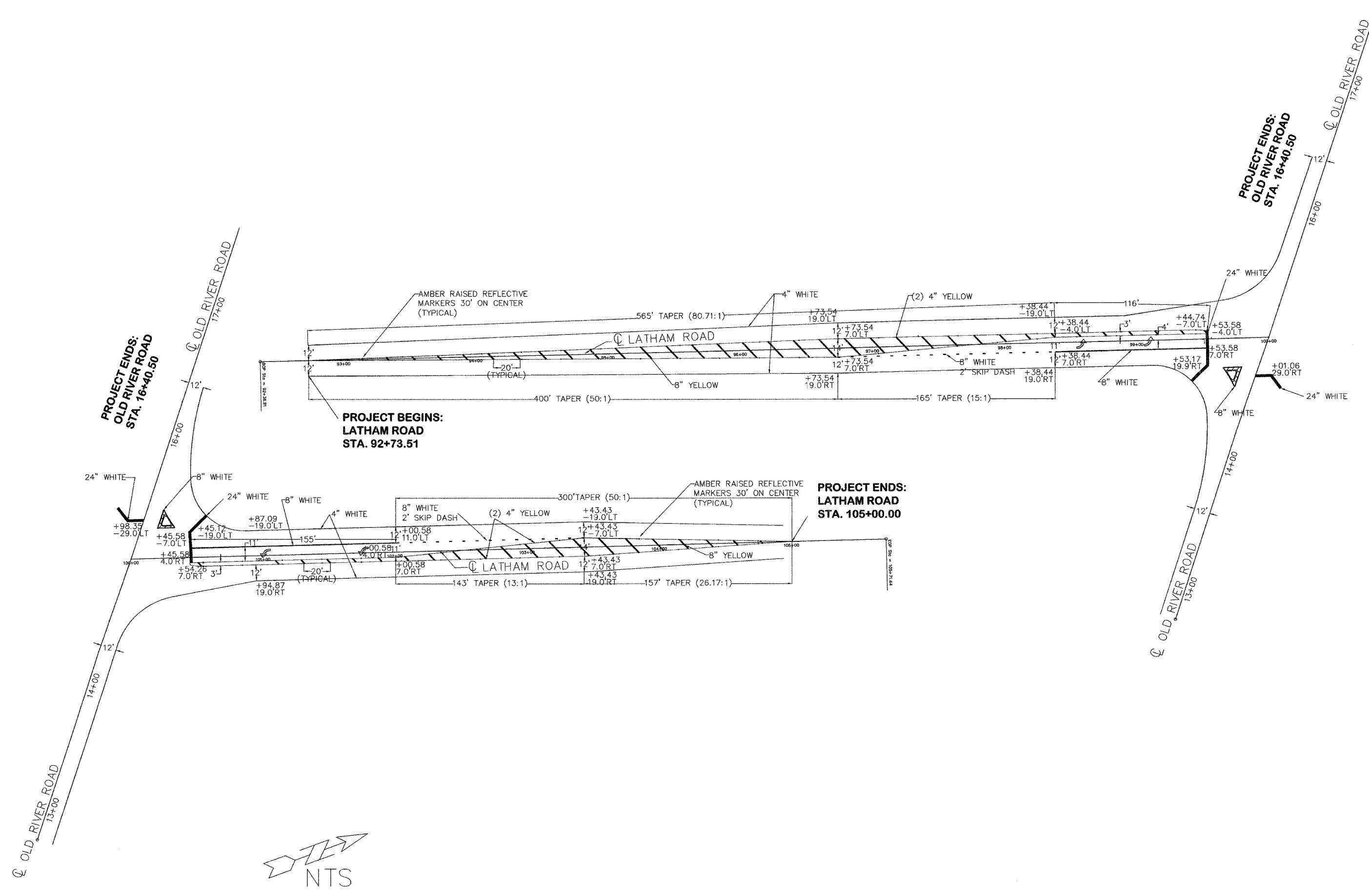
LATHAM ROAD PLAN & PROFILE SHEET

\p\proj\17\06\00408\00\SP\17-07.dwg, 9/29/2007 2:00:09 PM, by: RCP/DO, Date Plotted: 10/29/07 11:00:00 AM



SCALES:
 1" = 20' HOR
 1" = 5' VER

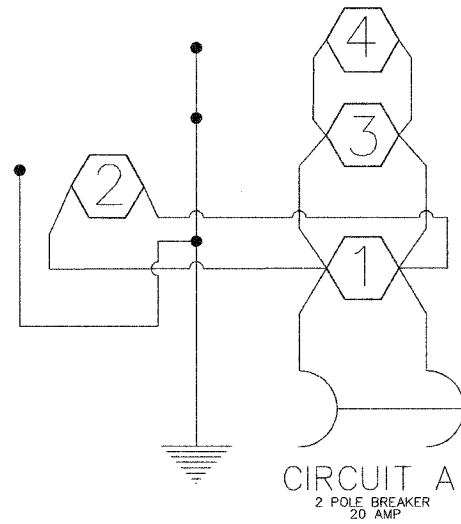




\\latham\projects\06-00408-00-SP\Drawings\10500-Cover-10.ppt, 8/29/2007 2:58:29 PM, Size: 103400 Bytes



CABLE DIAGRAM



LEGEND

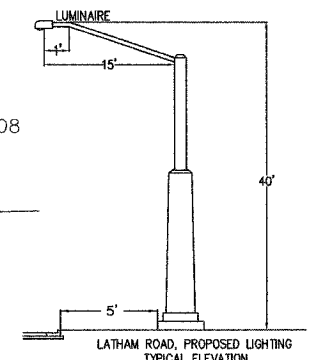
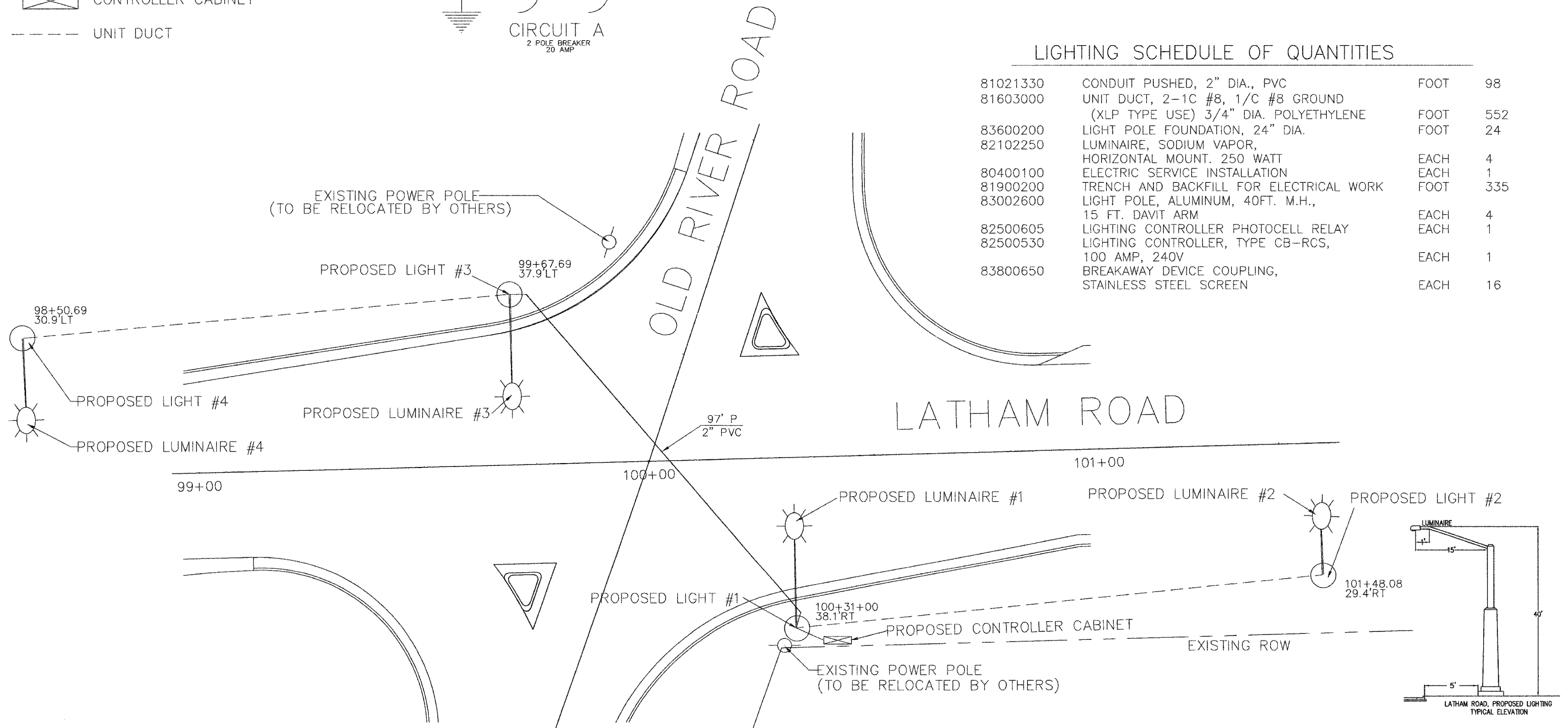
- PROPOSED LUMINAIRE
- PROPOSED LIGHT BASE
- PROPOSED CONTROLLER CABINET
- UNIT DUCT

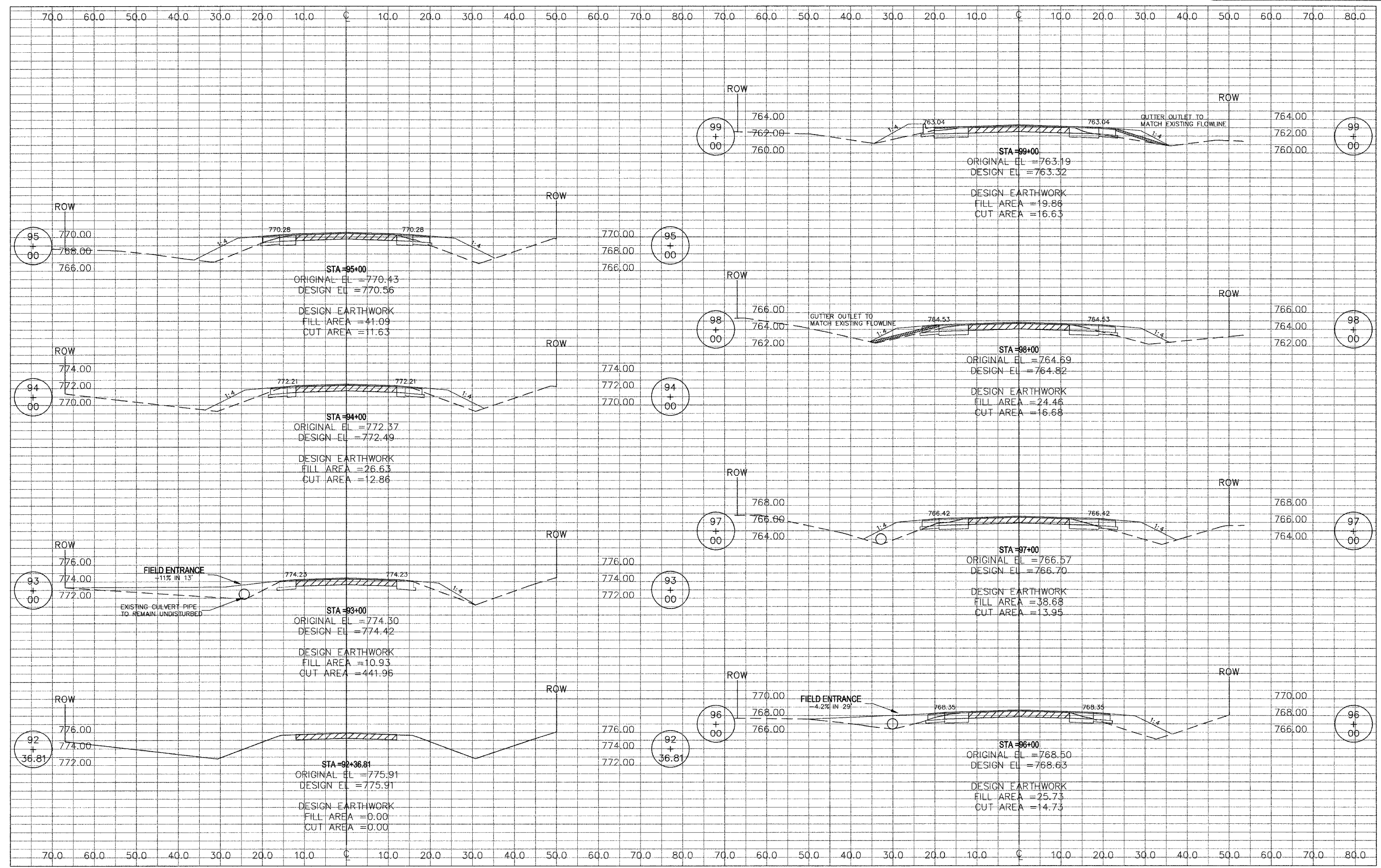
UTILITY OFFICIALS

- GAS:**
NICOR GAS COMPANY
1844 FERRY ROAD
NAPERVILLE, IL. 60563
(630) 983-8676 x2362
(630) 983-4028 fax
- WATER:**
CITY OF ROCKFORD PUBLIC WORKS
425 E. STATE STREET
ROCKFORD, IL. 61104
(815) 961-3766
- ELECTRIC:**
COMMONWEALTH EDISON COMPANY
123 ENERGY AVENUE
ROCKFORD, IL. 61109
(815) 490-2257
- CABLE TELEVISION:**
INSIGHT COMMUNICATIONS
811 21ST STREET
ROCKFORD, IL. 61101
(815) 962-4400 (x2012)
- TELEPHONE:**
AMERITECH / SBC-IL
2404 8TH. AVENUE
ROCKFORD, IL. 61108
(815) 394-7264
- SEWER:**
ROCK RIVER WATER RECLAMATION DISTRICT
3333 KISHWAUKEE STREET
ROCKFORD, IL. 61109
(815) 397-9700

LIGHTING SCHEDULE OF QUANTITIES

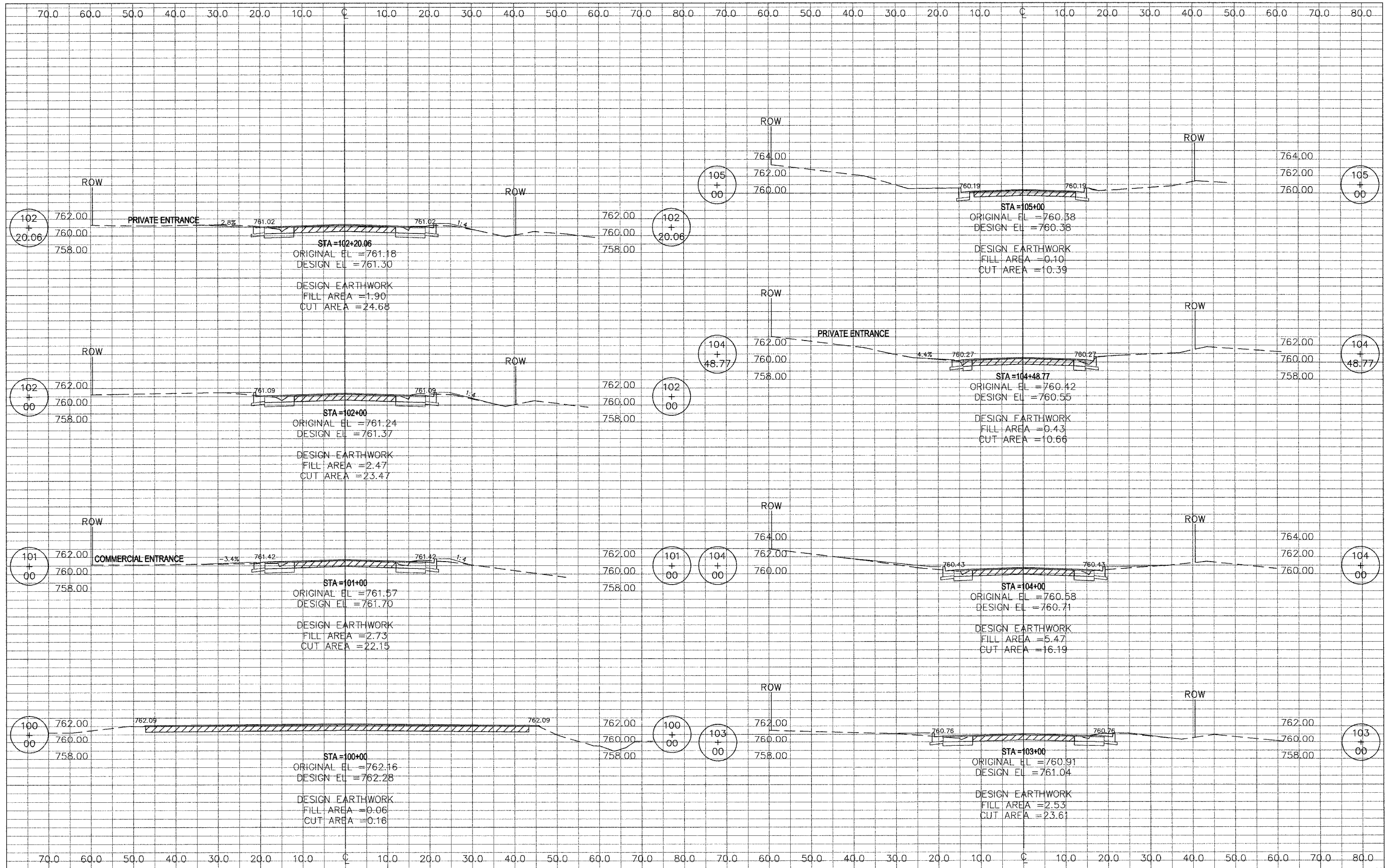
81021330	CONDUIT PUSHED, 2" DIA., PVC	FOOT	98
81603000	UNIT DUCT, 2-1C #8, 1/C #8 GROUND (XLP TYPE USE) 3/4" DIA. POLYETHYLENE	FOOT	552
83600200	LIGHT POLE FOUNDATION, 24" DIA.	FOOT	24
82102250	LUMINAIRE, SODIUM VAPOR, HORIZONTAL MOUNT. 250 WATT	EACH	4
80400100	ELECTRIC SERVICE INSTALLATION	EACH	1
81900200	TRENCH AND BACKFILL FOR ELECTRICAL WORK	FOOT	335
83002600	LIGHT POLE, ALUMINUM, 40FT. M.H., 15 FT. DAVIT ARM	EACH	4
82500605	LIGHTING CONTROLLER PHOTOCELL RELAY	EACH	1
82500530	LIGHTING CONTROLLER, TYPE CB-RCS, 100 AMP, 240V	EACH	1
83800650	BREAKAWAY DEVICE COUPLING, STAINLESS STEEL SCREEN	EACH	16





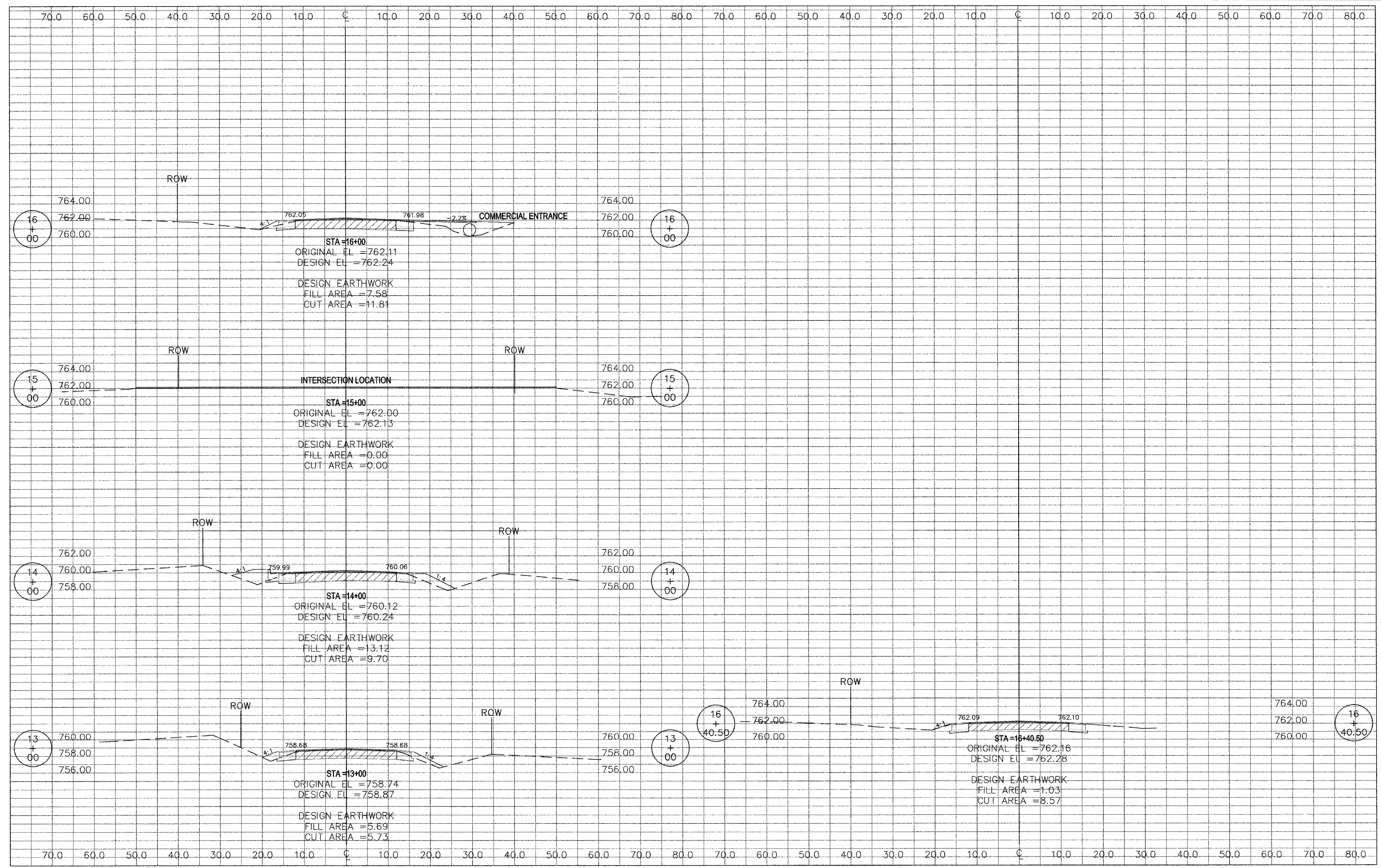
Vertical Curve Data Table

LATHAM ROAD CROSS SECTIONS



Vertical Curve Data Table

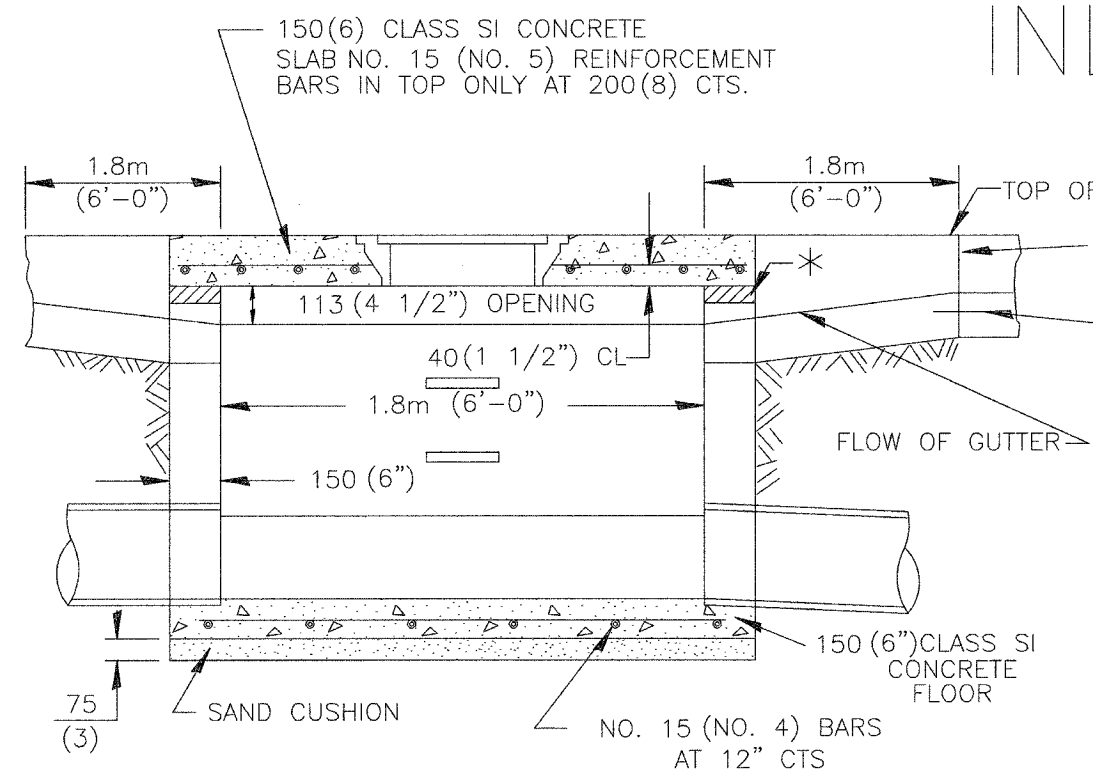
LATHAM ROAD CROSS SECTIONS



Vertical Curve Data: Station 13+00.00, Station 13+40.00, Station 14+00.00, Station 15+00.00, Station 16+00.00, Station 16+40.50



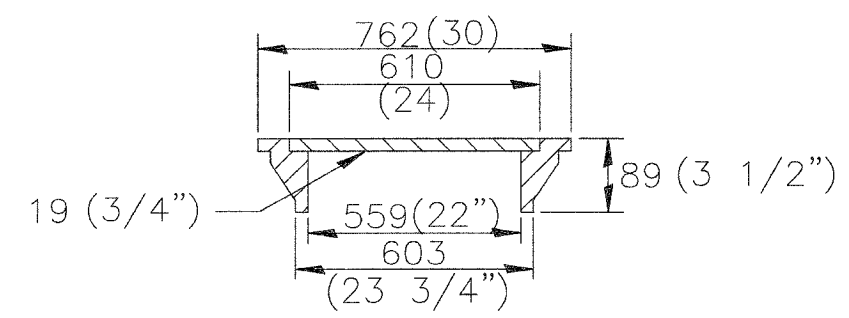
INLET SPECIAL NO. 2



FRONT VIEW

SEE STANDARD 602701 FOR DETAILS OF STEPS.
 25(1) PREFORMED EXPANSION JOINTS AS SHOWN SHALL BE PROVIDED ON EACH SIDE OF INLET.
 CLASS SI CONCRETE OR PRECAST CONCRETE SHALL BE USED THROUGHOUT.
 THE SIDE WALLS MAY BE BUILT AS PRECAST SEGMENTAL SECTIONS.

LIGHT WEIGHT MANHOLE CASTING



TOTAL WEIGHT 73 KG.(160 LBS.)

SLOPE TOP SLAB TO MATCH FINAL CONDITIONS

150(6) CLASS SI CONCRETE SLAB NO. 15 (NO. 5) REINFORCEMENT BARS IN TOP ONLY

200(18) CURB & GUTTER

113 (4 1/2) OPENING

WIER ELEV.

1.2m (4'-0) POUR ADJUSTMENT WITH GUTTER

150 (6) FACE OF INLET

OPTIONAL CONSTRUCTION JOINT

BACK OF CURB

GUTTER LINE

EDGE OF PAVEMENT

FLOW OF GUTTER

150 (6) CLASS SI CONCRETE FLOOR

NO. 15 (NO. 4) BARS AT 12" CTS

75 (3) SAND CUSHION

40(1 1/2) CL

1.8m (6'-0)

1.8m (6'-0)

1.8m (6'-0)

1.8m (6'-0)

TOP OF CURB

25(1) PREFORMED EXPANSION JOINT FILLER

32 (1 1/4) DOWELL BAR

STEPS AT 300(12") TO 400(16") CTS.

* THE WALL ADJUSTMENTS SHALL BE MADE WITH CONCRETE BUILDING BRICK OR CLASS SI CONCRETE.

THE HEIGHT OF THE BOX MAY BE CONSTRUCTED 150(6") SHORT TO ALLOW FOR FIELD ADJUSTMENTS.

NOTES

STEPS SHALL BE OMITTED WHEN DEPTH OF INLET IS LESS THAN 1.5 m (5 ft.)

THE INLET SHALL BE CAST IN PLACE OR PRECAST.

EXCEPT AS NOTED HEREON INLET SPECIAL SHALL BE CONSTRUCTED IN ACCORDANCE WITH SECTION 602 OF THE STANDARD SPECIFICATIONS.

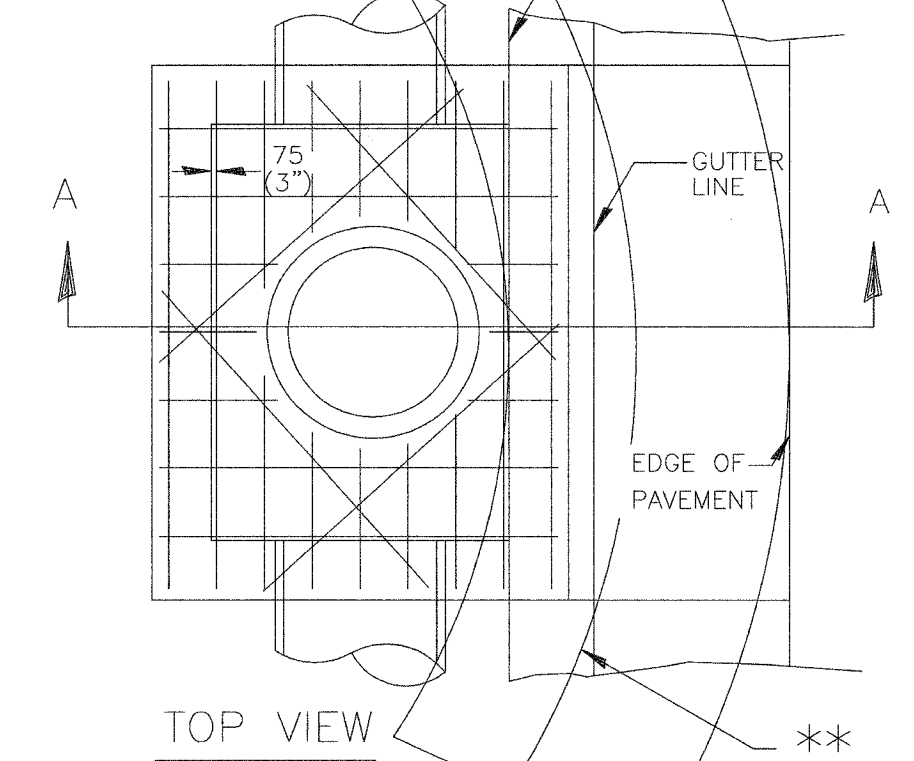
THE CONTRACT UNIT PRICE EACH FOR INLET SPECIAL NO. 2 SHALL INCLUDE THE COST OF FURNISHING AND INSTALLING THE FRAME, LID, REINFORCEMENT BARS, FLOOR AND TOP SLABS, CAST IRON STEPS (IF USED).

THE CURB AND GUTTER WILL BE PAID FOR SEPARATELY AND WILL BE MEASURED THROUGH THE INLET.

THE CURB AND GUTTER ADJACENT TO AND 1.8m(6 FT) ON EITHER SIDE OF THE INLET SHALL BE CONSTRUCTED AS SHOWN WITH NO ADDITIONAL COMPENSATION FOR THE TRANSITION.

ALL DIMENSIONS ARE IN MILLIMETERS (INCHES) UNLESS OTHERWISE NOTED.

SEC. A-A



TOP VIEW

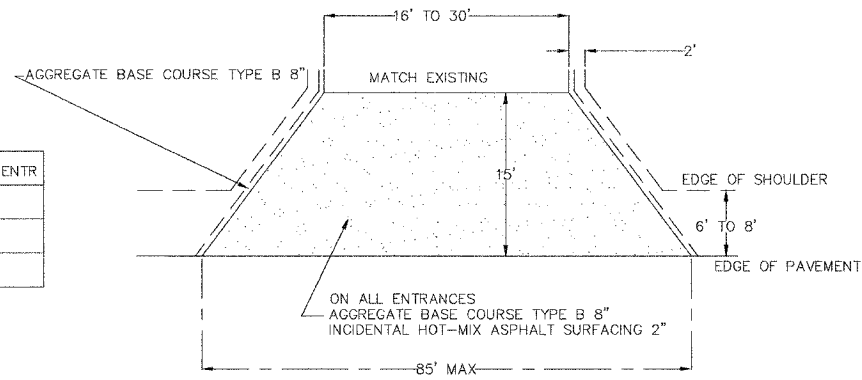
** WHEN INLET IS CONSTRUCTED IN RETURN, THE TOP OF SLAB SHALL CONFORM TO THE RADIUS OF THE RETURN.

ILLINOIS DEPARTMENT OF TRANSPORTATION, CHICAGO, ILLINOIS 60626-1000, TEL: (312) 243-1000, FAX: (312) 243-1001, WWW.IDOT.IL.GOV



HOT-MIX ASPHALT APPROACHES & MAILBOX RETURNS

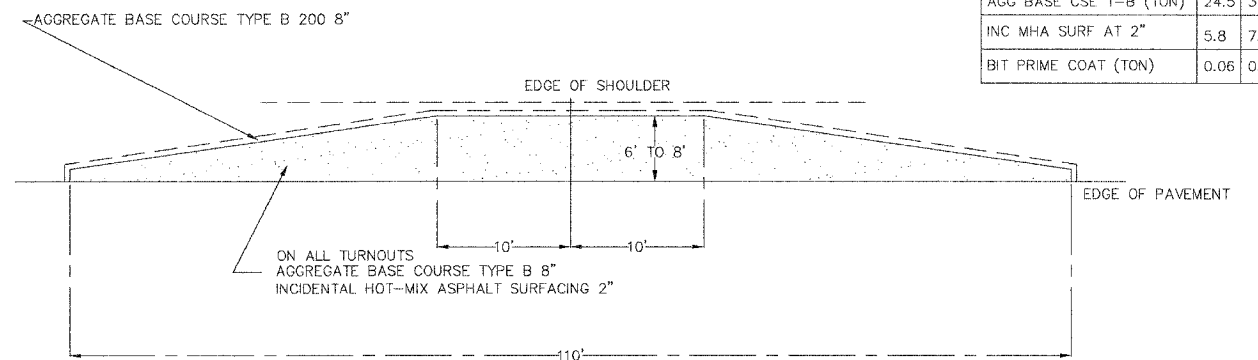
FIELD ENTRANCE



35' FIELD ENTRANCE

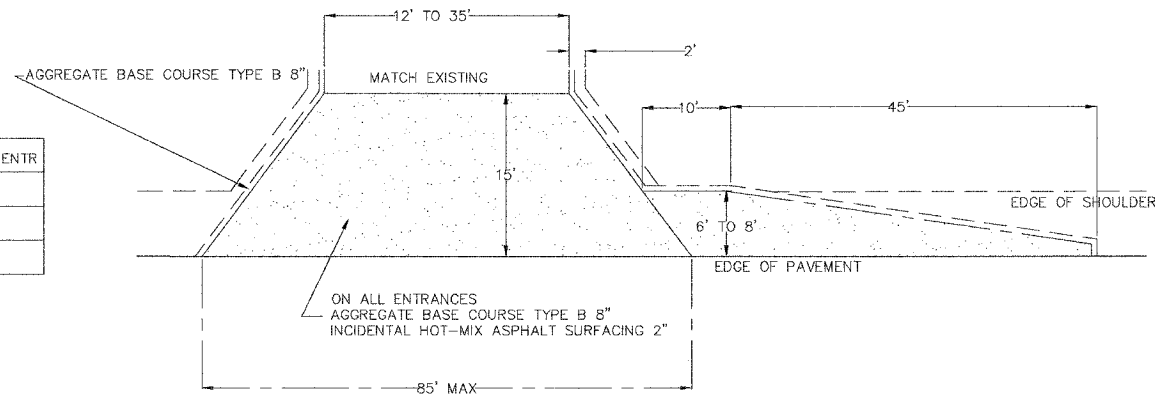
	6'	8'	PER FOOT ENTR
AGG BASE CSE T-B (TON)	65.9	68.5	1.87
INC MHA SURF AT 2"	20.5	21.2	0.54
BIT PRIME COAT (TON)	0.19	0.20	0.006

MAILBOX TURNOUT



	6'	8'
AGG BASE CSE T-B (TON)	24.5	31.1
INC MHA SURF AT 2"	5.8	7.8
BIT PRIME COAT (TON)	0.06	0.08

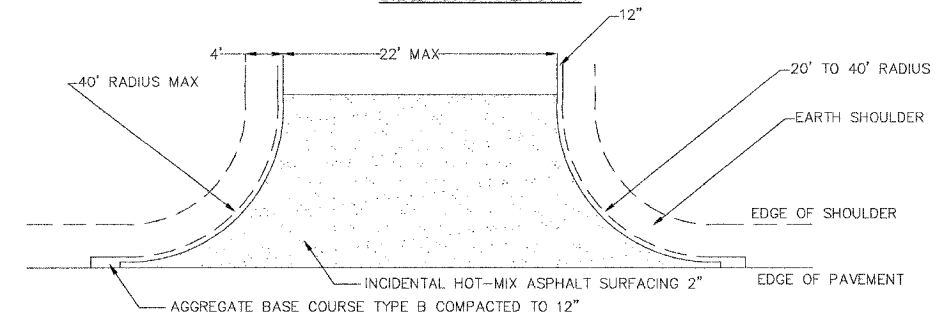
FARM OR SMALL COMERCIAL ENTRANCE



35' COMMERCIAL ENTRANCE

	6'	8'	PER FOOT ENTR
AGG BASE CSE T-B (TON)	65.9	68.5	1.87
INC MHA SURF AT 2"	20.5	21.2	0.54
BIT PRIME COAT (TON)	0.19	0.20	0.006

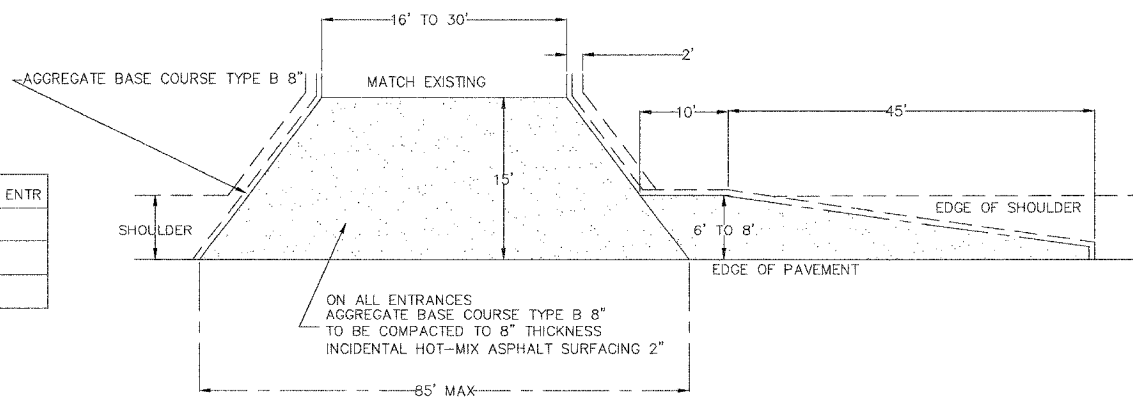
SIDEROAD RETURN



	RADIUS 20'			RADIUS 30'			RADIUS 40'			RADIUS 50'		
	18'	20'	22'	18'	20'	22'	18'	20'	22'	18'	20'	22'
AGG BASE CSE T-B (TON)	45.1	48.2	51.2	77.5	82.0	86.6	116.3	122.4	128.5	161.5	169.1	179.9
INC MHA SURF AT 2"	6.6	7.2	7.6	11.6	12.2	13.0	17.6	18.6	19.8	24.6	25.8	27.0
BIT PRIME COAT (TON)	0.08	0.09	0.10	0.15	0.16	0.17	0.22	0.24	0.25	0.31	0.33	0.35

NOTE: USE 2" INC MHA SURF ON EXISTING RETURNS

PRIVATE ENTRANCE



12' PRIVATE ENTRANCE

	6'	8'	PER FOOT ENTR
AGG BASE CSE T-B (TON)	43.8	48.3	0.71
INC MHA SURF AT 2"	13.5	14.4	0.19
BIT PRIME COAT (TON)	0.12	0.13	0.002

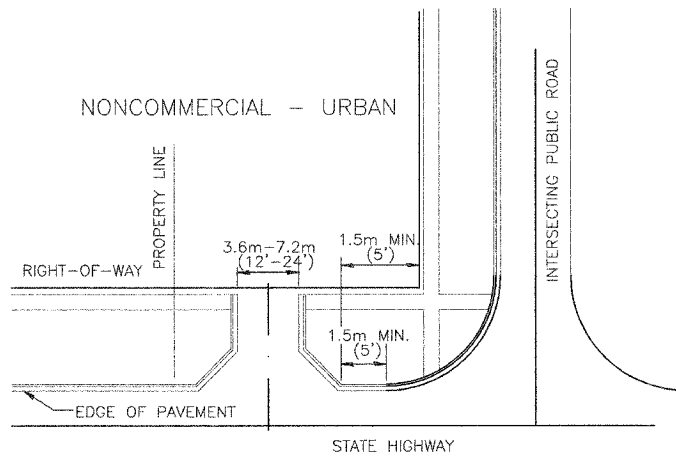
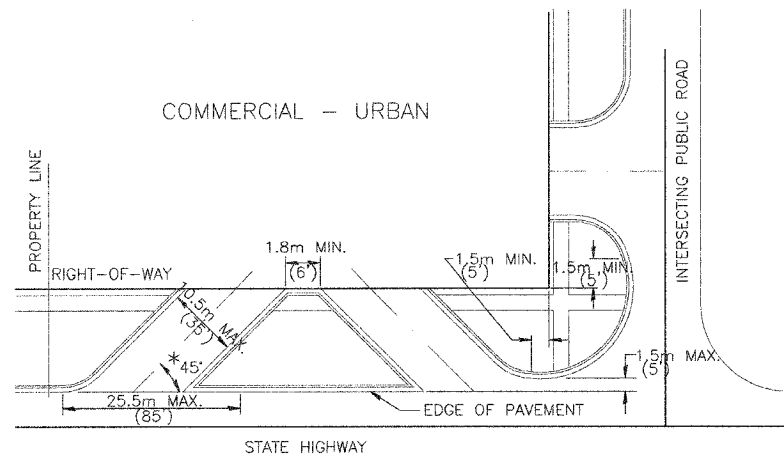
NOTE

- ALL PE & CE ARE TO BE SURFACE TO RIGHT OF WAY LINE.
- ALL FE ARE TO BE SURFACE TO THE END OF THE TURN OUT TAPER. BEHIND THE TAPER, MATCH EXISTING.
- EXISTING APPROACHES MAILBOX RETURNS SHALL BE WIDENED TO CONFORM WITH STANDARD.
- WHEN RESURFACING EXISTING SR PE % MB AND MAIN LINE SURFACING IS GREATER THAN 2" TAPER MHA FROM EDGE OF PAVEMENT TO 2" IN 4'
- LARGE COMMERCIAL ENTRANCES ARE TO BE DESIGNED INDIVIDUALLY AND TO BE APPROVED BY THE WINNEBAGO COUNTY HIGHWAY DEPARTMENT
- DRIVE PROFILES SHALL BE CONSTRUCTED WITH A 20' VERTICAL CURVE BEGINNING AT THE EDGE OF SHOULDER TO PROVIDE A SMOOTH TRANSITION FROM THE DRIVE PROFILE TO THE SHOULDER.

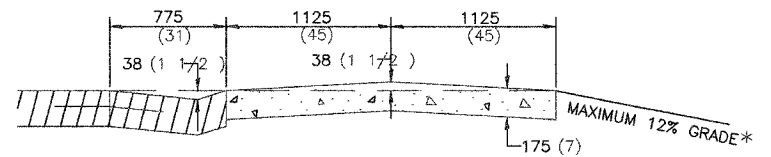
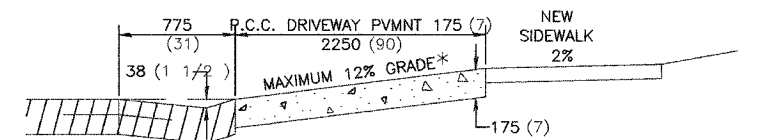
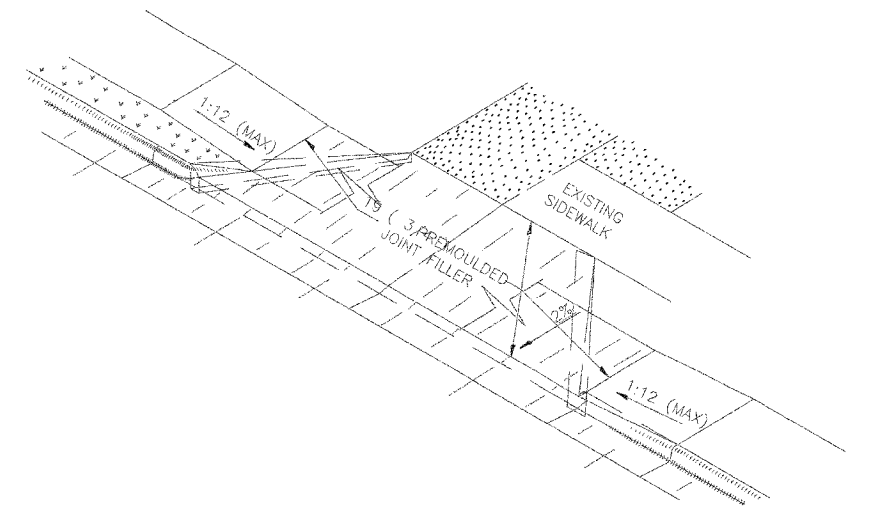


ENTRANCE APPROACHES - URBAN AREA

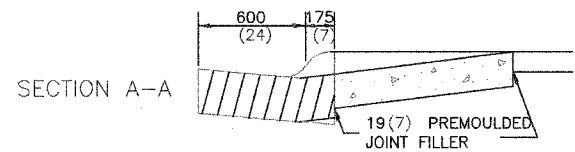
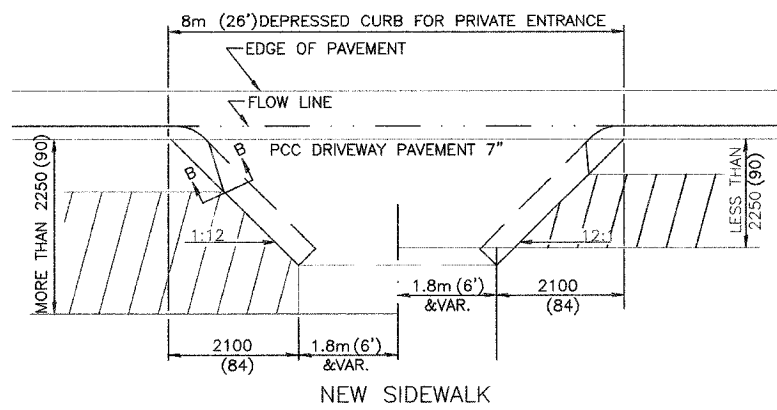
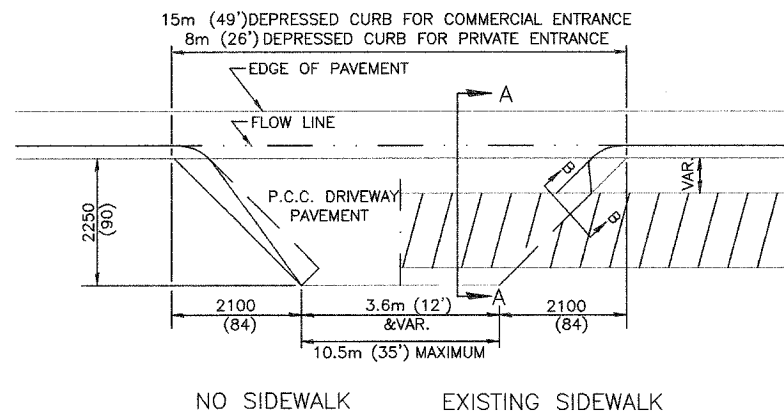
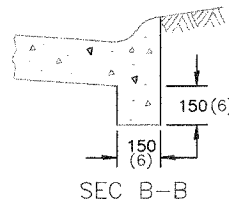
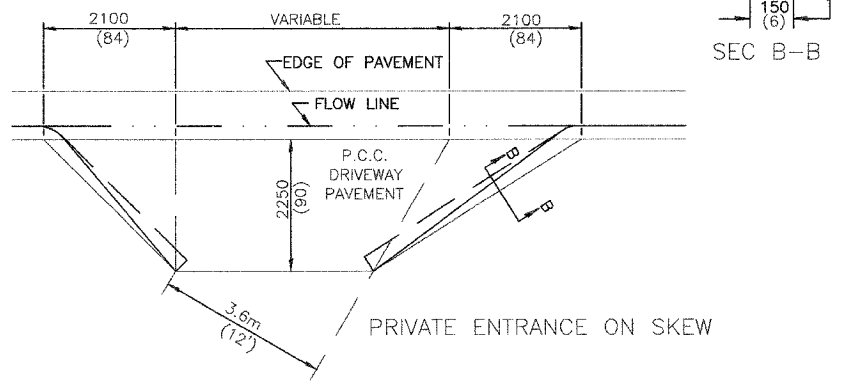
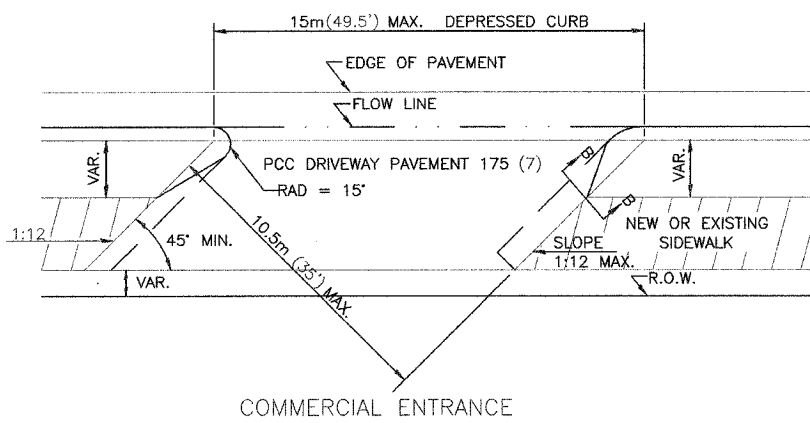
TYPICAL APPLICATION OF ENTRANCES



WHEN THE ISLAND BETWEEN DRIVES IS LESS THAN 7.5m (25') LONG OR LESS THAN 10 FEET WIDE, IT SHALL BE DEFINED BY CURBS, MASONRY, OR OTHER DEVICES.
 * 45° MIN. ANGLE PERMITTED ONLY FOR ONE-WAY DRIVEWAYS.
 60° MIN. ANGLE FOR TWO-WAY DRIVEWAYS.



* IN CASES WHERE GRADE EXCEEDS 12%, THE RESIDENT ENGINEER SHALL CHECK WITH DISTRICT DESIGN OFFICE TO DETERMINE NEW APPROACH GRADE. PARTICULAR ATTENTION SHALL BE PAID TO THE NEGATIVE GRADE TO PREVENT DRAINAGE FROM OVER FLOWING INTO THE PRIVATE ENTRANCE.



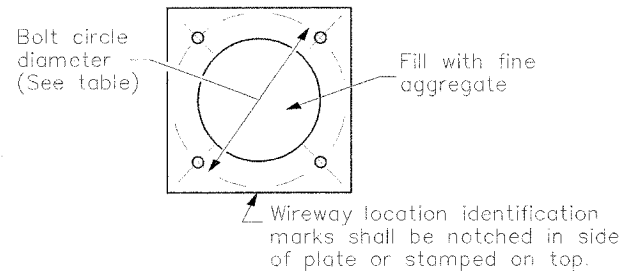
THE VARIABLE HEIGHT INTEGRAL CURB AND PREMOULDED JOINT FILLER WILL NOT BE PAID FOR SEPARATELY, BUT SHALL BE INCLUDED IN THE CONTRACT UNIT PRICE OF DRIVEWAY PAVEMENT OF THE THICKNESS SPECIFIED.

ALL DIMENSIONS ARE IN MILLIMETERS (INCHES) UNLESS OTHERWISE NOTED.

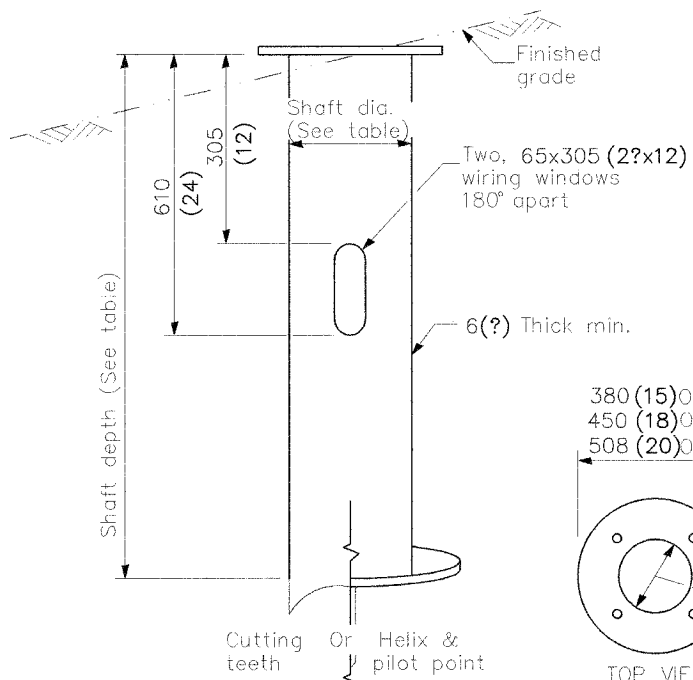
Willingboro County, Illinois, 1000 North Main Street, Willingboro, IL 61780
 © 2007 Willingboro County, Illinois. All rights reserved.

LIGHT POLE MOUNTING HEIGHT	BOLT CIRCLE DIAMETER	STEEL FOUNDATION			CONCRETE FOUNDATION		
		SHAFT DIAMETER	SHAFT DEPTH	TOP PLATE (min)	SHAFT DIAMETER	SHAFT DEPTH	ANCHOR ROD LENGTH ①
<9.1 m (30')	292 (11.5)	220 (8%)	1.83 m (6')	300 x 300 x 25 12 x 12 x 1	610 (24)	1.52 m (5'-0")	1.45 m (4'-9")
9.4 m - 10.7 m (31'-35')	292 (11.5)	220 (8%)	1.83 m (6')	300 x 300 x 25 12 x 12 x 1	610 (24)	1.67 m (5'-6")	1.60 m (5'-3")
10.9 m - 12.2 m (36'-40')	381 (15) ③	220 (8%)	1.83 m (6') ②	375 x 375 x 31 15 x 15 x 1 1/4	762 (30)	1.83 m (6'-0")	1.75 m (5'-9")
12.5 m - 13.7 m (41'-45')	381 (15) ③	220 (8%)	1.83 m (6') ②	375 x 375 x 31 15 x 15 x 1 1/4	762 (30)	1.98 m (6'-6")	1.90 m (6'-3")
14.0 m - 15.2 m (46'-50')	381 (15) ③	220 (8%)	2.44 m (8')	375 x 375 x 31 15 x 15 x 1 1/4	762 (30)	2.13m (7'-0")	2.00 m (6'-9")

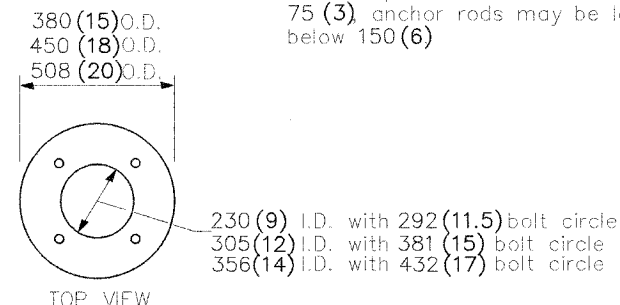
- ① Length does not include 100(4) hook
- ② 220 mm x 2.44 m(8"x 8'-0") for Twin luminaires
- ③ Bolt circle diam. shall be 430(17) when a TB3-17 transformer base is used



Length above foundation shall be adjusted to accommodate breakaway devices furnished by the contractor for a specific installation.

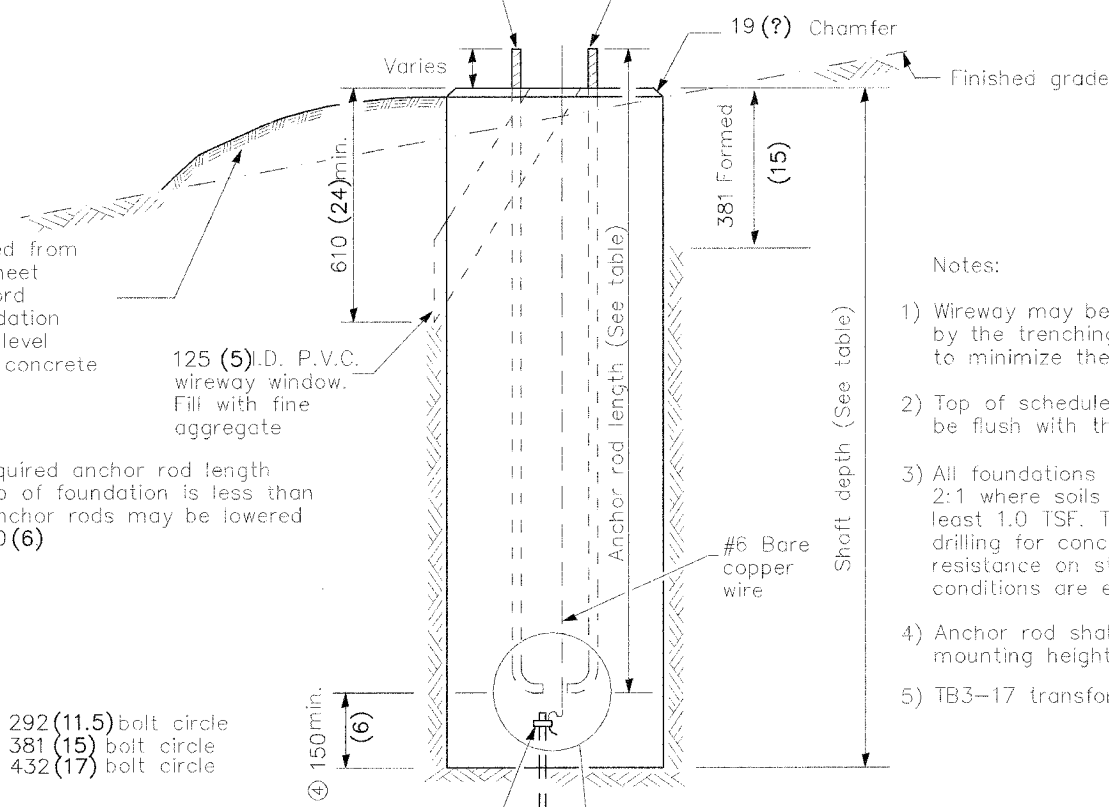


STEEL FOUNDATION

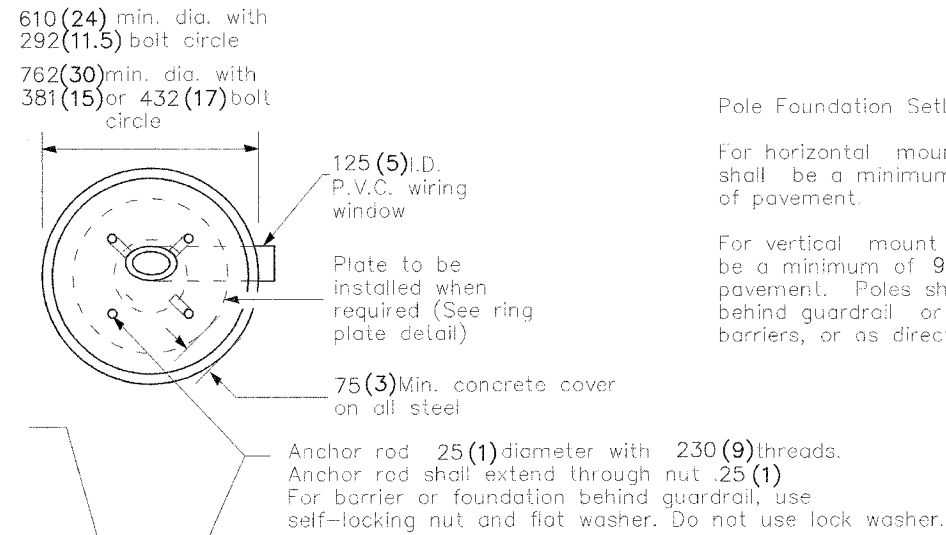


RING PLATE DETAIL

(When rock is encountered and foundation is shallower)



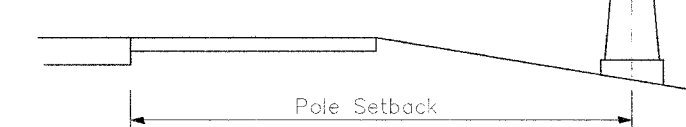
CONCRETE FOUNDATION



Pole Foundation Setback:

For horizontal mounted luminaires, setback shall be a minimum of 6.1 m (20') from edge of pavement.

For vertical mount luminaires, setback shall be a minimum of 9 m (30') from edge of pavement. Poles shall be located 1.5 m (5') behind guardrail or other protective barriers, or as directed by the Engineer.

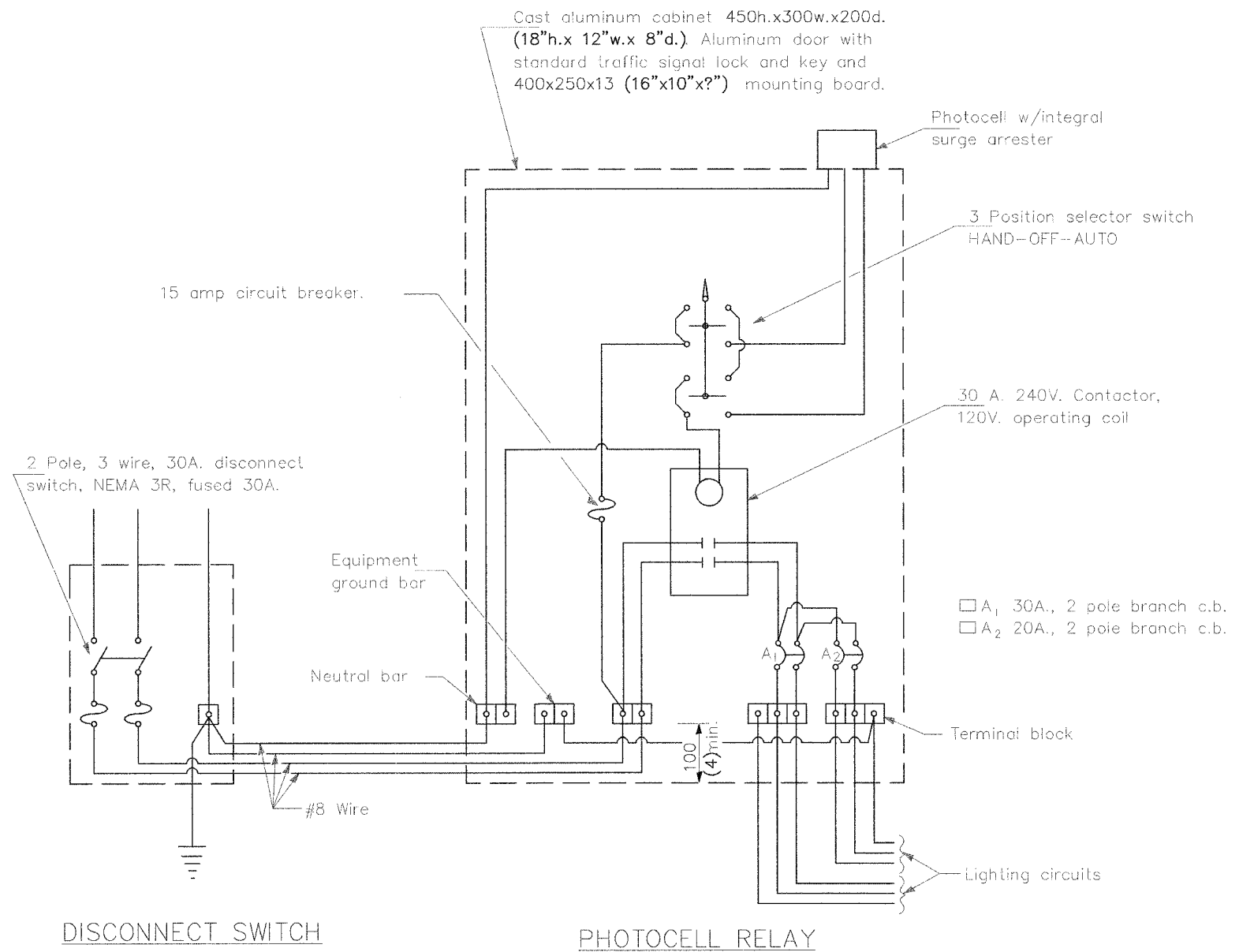
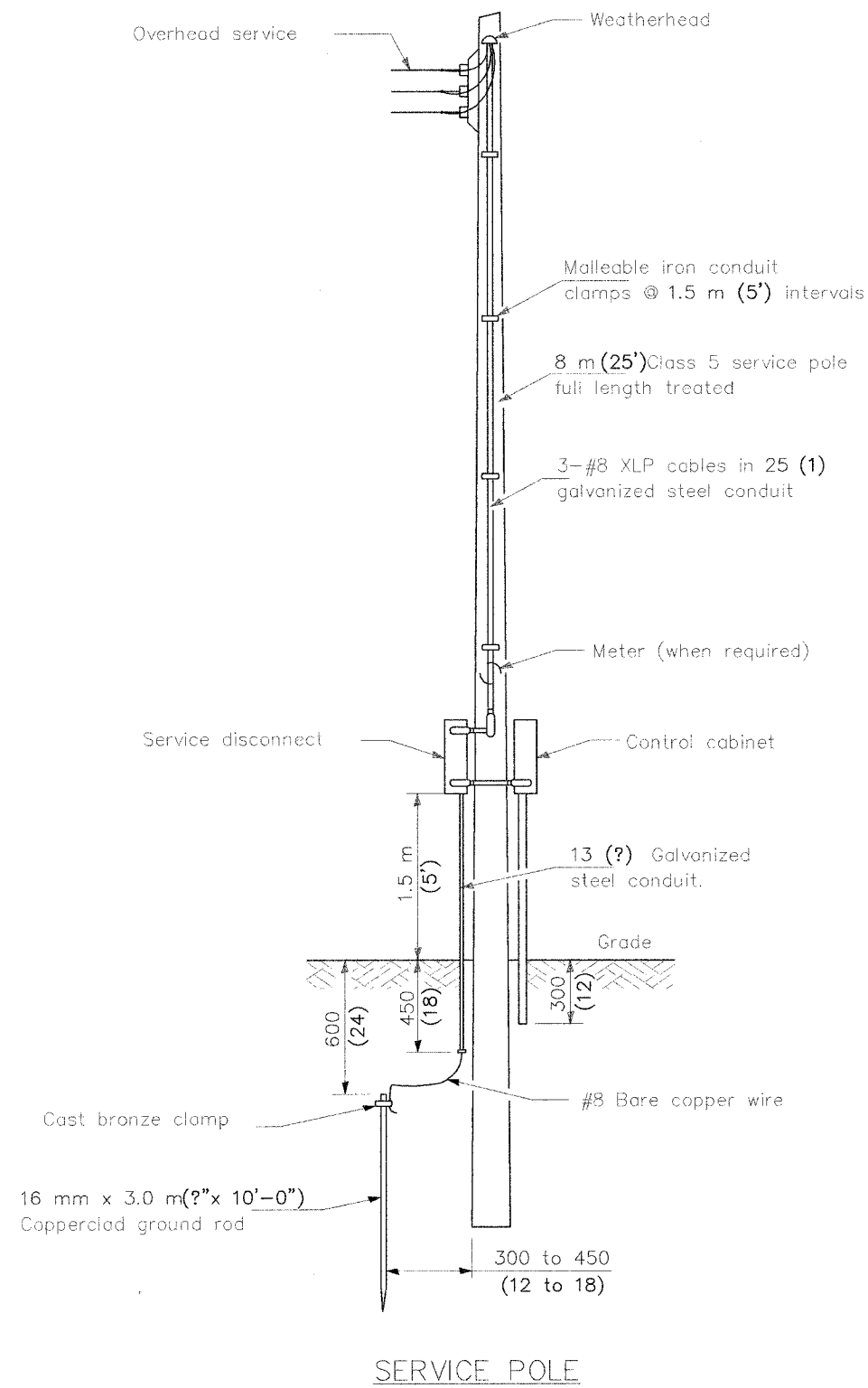


Notes:

- 1) Wireway may be on front, back or side of foundation as required by the trenching. Place door of transformer base on wireway side to minimize the number of unit duct bends.
- 2) Top of schedule 40 125(5) I.D. PVC wiring window, shall be flush with the top of foundation for drainage.
- 3) All foundations are designed to be located on slopes not exceeding 2:1 where soils have an unconfined compressive strength of at least 1.0 TSF. The contractor shall verify the soil strength during drilling for concrete foundations or by monitoring installation resistance on steel foundations and notify the engineer if other conditions are encountered.
- 4) Anchor rod shall be increased to 31(1?) diameter for 15.24(50') mounting height or above.
- 5) TB3-17 transformer base is not to be used on metal foundation

All dimensions are in millimeters (inches) unless otherwise shown.

DATE	REVISIONS	LIGHT POLE FOUNDATION LGT007-836



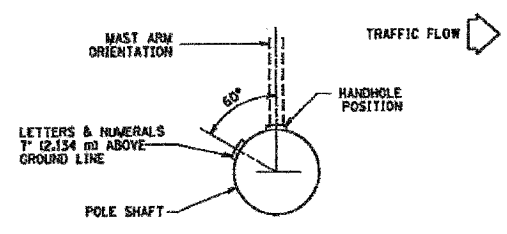
GENERAL NOTES

All equipment shall be U.I. Listed.
All dimensions are in millimeters unless otherwise shown.

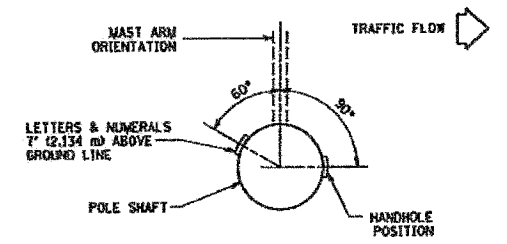
DATE	REVISIONS

CONTROL INSTALLATION SERVICE POLE MOUNTED
120/240V., 1 PHASE, 3 WIRE SERVICE
LGT003.M32

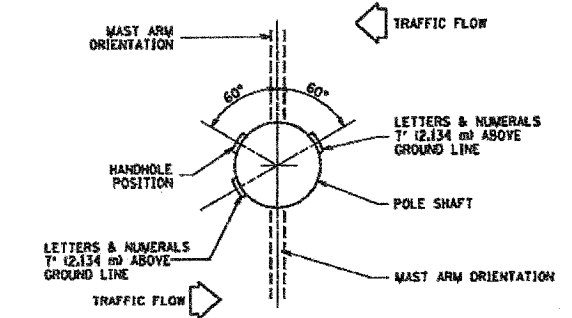
DATE	SECTION	COUNTY	TOTAL SHEETS	SHEET NO.
2007	06-00408-00-SP	WINNEBAGO	15	19
STA.		TO STA.		
FED. ROAD DIST. NO.		ILLINOIS FED. AID PROJECT		



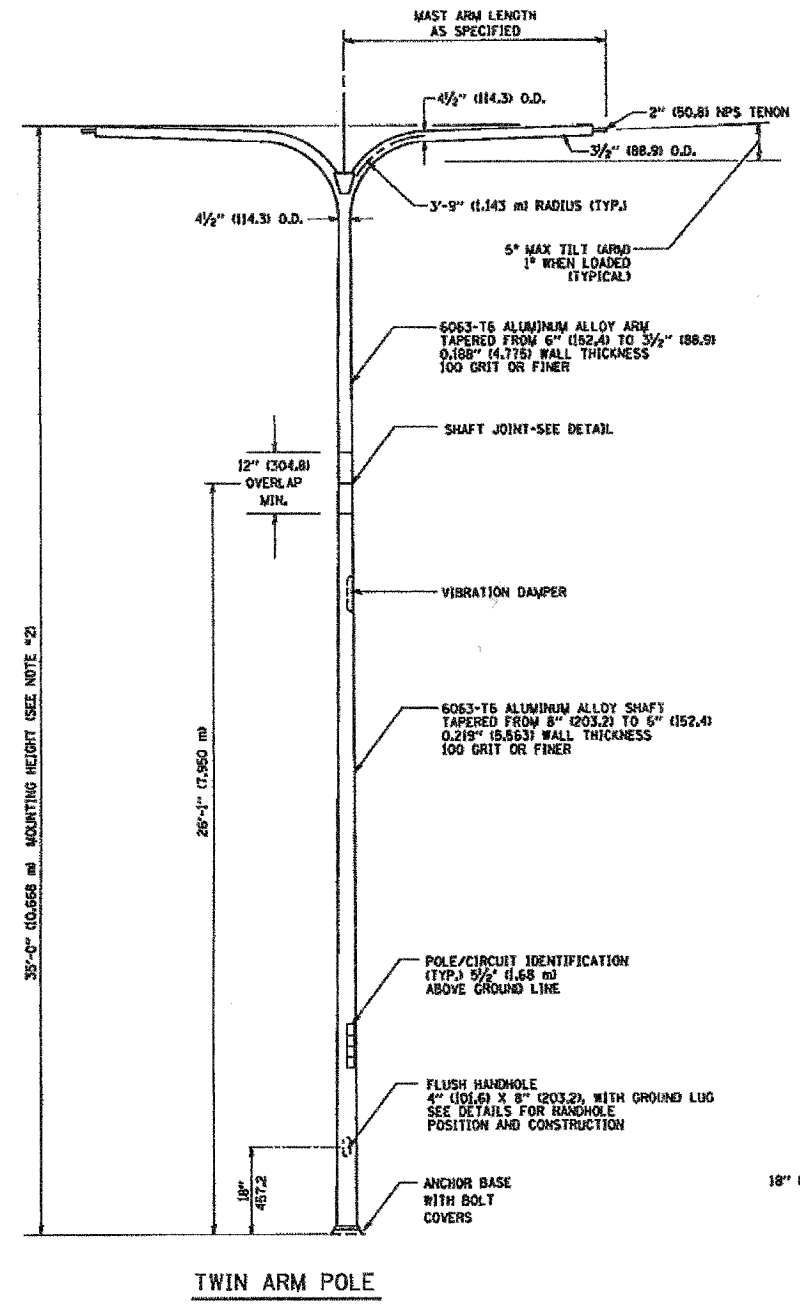
POSITION OF HANDHOLE AND POLE NUMBER FOR SINGLE MAST ARM POLES MOUNTED ON BRIDGE PARAPET OR BARRIER WALL



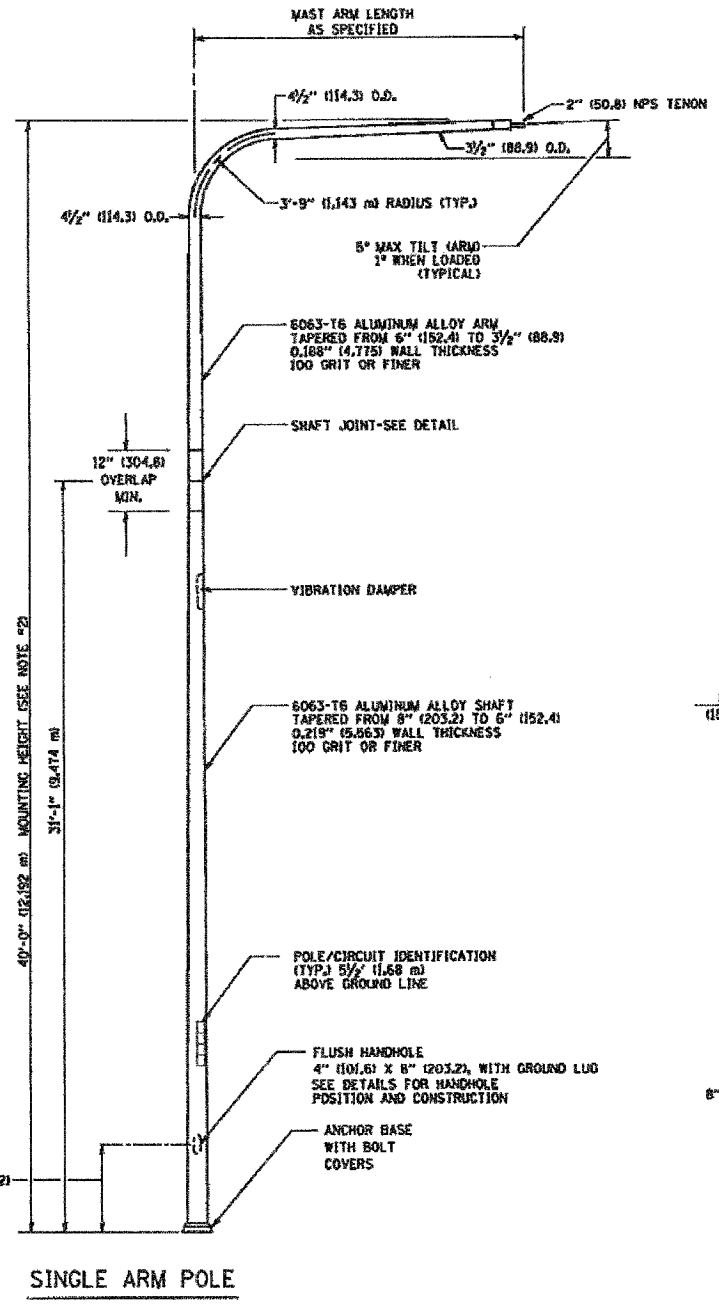
POSITION OF HANDHOLE AND POLE NUMBER FOR SINGLE MAST ARM POLES



POSITION OF HANDHOLE AND POLE NUMBER FOR TWIN MAST ARM POLES

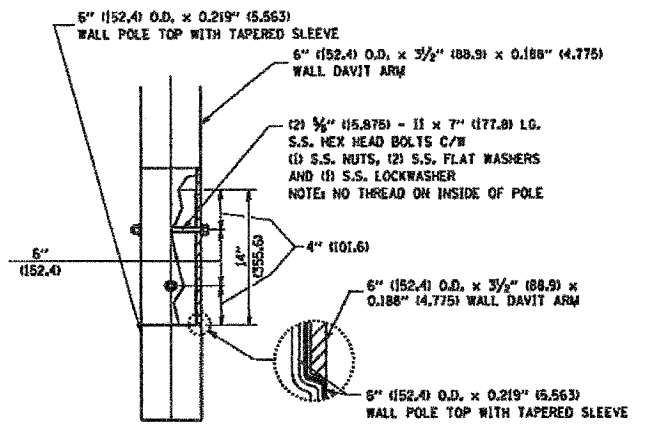


TWIN ARM POLE

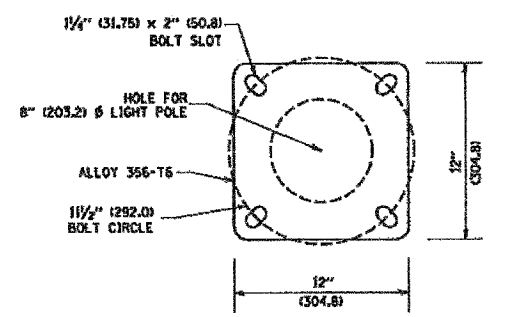


SINGLE ARM POLE

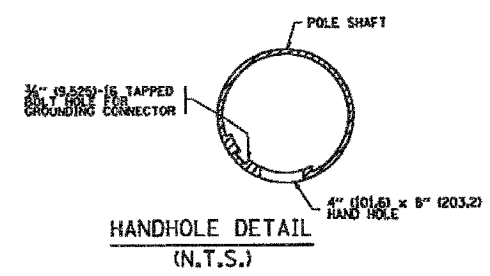
- NOTES:
1. ALL DIMENSIONS ARE IN INCHES (MILLIMETERS) UNLESS OTHERWISE SHOWN.
 2. MOUNTING HEIGHT IS DEFINED AS THE DISTANCE FROM THE CENTERLINE OF THE TENSION TO THE BOTTOM OF THE ANCHOR BASE.
 3. TWO PIECE SHAFT WILL BE MATCHED MARKED AND INTERCHANGEABLE BETWEEN DIFFERENT UNITS. FIELD DRILLING OF THE HOLES WILL NOT BE ALLOWED.
 4. THE LIGHT POLE WILL MEET AASHTO DESIGN CRITERIA AS SPECIFIED.
 5. THE INSTALLING CONTRACTOR WILL PROVIDE A UL LISTED GROUNDING CONNECTOR, BURNDY K2C23, T&B SP40, OR APPROVED EQUAL.
 6. LIGHT POLES WILL NOT BE INSTALLED WITHOUT MAST ARMS AND LUMINAIRES.
 7. LIGHT POLES WILL BE SET PLUMB ON THE FOUNDATION WITHOUT THE USE OF LEVELING NUTS, WASHERS OR SHIMS.
 8. LIGHTING UNIT IDENTIFICATION NUMBERS SHALL BE INSTALLED BEFORE THE LIGHTING UNIT IS ENERGIZED.



DAVIT ARM CONNECTION [14" (355.6) OVERLAP SHOWN]



LIGHT POLE BASE PLATE DETAIL 1 1/2" (38.1) BOLT CIRCLE



HANDHOLE DETAIL (N.T.S.)

REVISIONS	
NAME	DATE
D. DREW	4-2-02
D. DREW	5-7-02
R. TOMSONS	9-6-00
R. TOMSONS	8-12-03

ILLINOIS DEPARTMENT OF TRANSPORTATION
DAVIT LIGHT POLE
 35'-0" (10.668 m) MOUNTING HEIGHT
 SCALE: NONE
 DATE: 1/16/2007
 DRAWN BY: R.L.
 CHECKED BY: BE-412
 REVISION DATE: 01/01/07

PLOT DATE: 1/16/2007
 PLOT SCALE: AS SHOWN
 USER NAME: jh-walsh