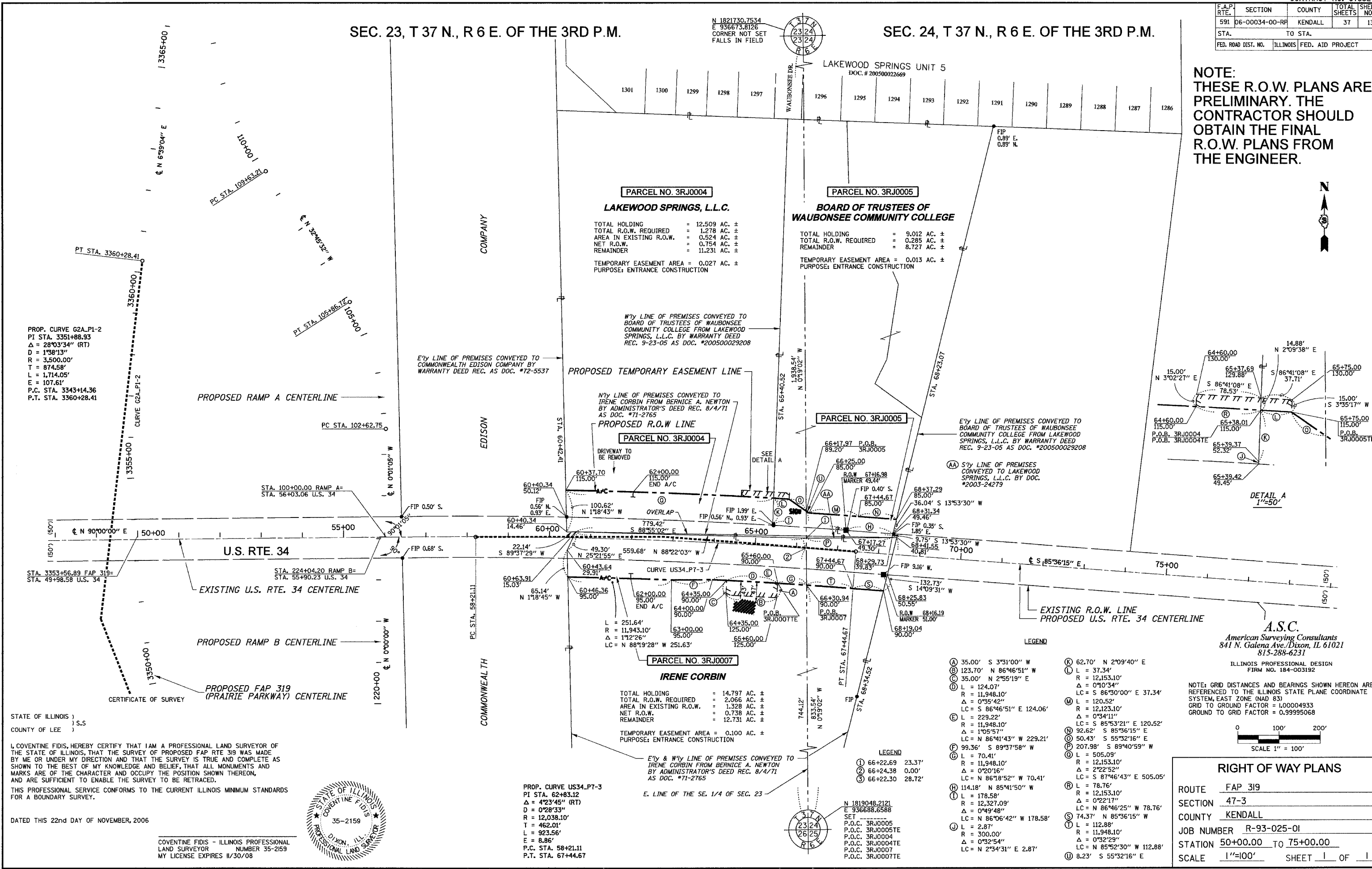


F.A.P. RTE.	SECTION	COUNTY	TOTAL SHEETS	TOTAL SHEET NO.
591	D6-00034-00-RF	KENDALL	37	13
STA.	TO STA.			
FED. ROAD DIST. NO.	ILLINOIS FED. AID PROJECT			

NOTE:
THESE R.O.W. PLANS ARE PRELIMINARY. THE CONTRACTOR SHOULD OBTAIN THE FINAL R.O.W. PLANS FROM THE ENGINEER.

SEC. 23, T 37 N., R 6 E. OF THE 3RD P.M.

SEC. 24, T 37 N., R 6 E. OF THE 3RD P.M.



PROP. CURVE G2A.P1-2
PI STA. 3351+88.93
Δ = 28°03'34" (RT)
D = 1°58'13"
R = 3,500.00'
T = 874.58'
L = 1,714.05'
E = 107.61'
P.C. STA. 3343+14.36
P.T. STA. 3360+28.41

STA. 3353+56.89 FAP 319=
STA. 49+98.58 U.S. 34

STA. 100+00.00 RAMP A=
STA. 56+03.06 U.S. 34

STA. 224+04.20 RAMP B=
STA. 55+90.23 U.S. 34

PROP. CURVE US34.P7-3
PI STA. 62+83.12
Δ = 4°23'45" (RT)
D = 0°28'33"
R = 12,038.10'
T = 462.01'
L = 923.56'
E = 8.86'
P.C. STA. 58+21.11
P.T. STA. 67+44.67



STATE OF ILLINOIS)
COUNTY OF LEE) S.S.

I, COVENTINE FIDUS, HEREBY CERTIFY THAT I AM A PROFESSIONAL LAND SURVEYOR OF THE STATE OF ILLINOIS, THAT THE SURVEY OF PROPOSED FAP RTE 319 WAS MADE BY ME OR UNDER MY DIRECTION AND THAT THE SURVEY IS TRUE AND COMPLETE AS SHOWN TO THE BEST OF MY KNOWLEDGE AND BELIEF, THAT ALL MONUMENTS AND MARKS ARE OF THE CHARACTER AND OCCUPY THE POSITION SHOWN THEREON, AND ARE SUFFICIENT TO ENABLE THE SURVEY TO BE RETRACED.

THIS PROFESSIONAL SERVICE CONFORMS TO THE CURRENT ILLINOIS MINIMUM STANDARDS FOR A BOUNDARY SURVEY.

DATED THIS 22nd DAY OF NOVEMBER, 2006

COVENTINE FIDUS - ILLINOIS PROFESSIONAL LAND SURVEYOR
NUMBER 35-2159
MY LICENSE EXPIRES 11/30/08

PARCEL NO. 3RJ0004
LAKEWOOD SPRINGS, L.L.C.
TOTAL HOLDING = 12.509 AC. ±
TOTAL R.O.W. REQUIRED = 1.278 AC. ±
AREA IN EXISTING R.O.W. = 0.524 AC. ±
NET R.O.W. = 0.754 AC. ±
REMAINDER = 11.231 AC. ±
TEMPORARY EASEMENT AREA = 0.027 AC. ±
PURPOSE: ENTRANCE CONSTRUCTION

PARCEL NO. 3RJ0005
BOARD OF TRUSTEES OF WAUBONSEE COMMUNITY COLLEGE
TOTAL HOLDING = 9.012 AC. ±
TOTAL R.O.W. REQUIRED = 0.285 AC. ±
REMAINDER = 8.727 AC. ±
TEMPORARY EASEMENT AREA = 0.013 AC. ±
PURPOSE: ENTRANCE CONSTRUCTION

PARCEL NO. 3RJ0004
IRENE CORBIN
TOTAL HOLDING = 14.797 AC. ±
TOTAL R.O.W. REQUIRED = 2.066 AC. ±
AREA IN EXISTING R.O.W. = 1.328 AC. ±
NET R.O.W. = 0.738 AC. ±
REMAINDER = 12.731 AC. ±
TEMPORARY EASEMENT AREA = 0.100 AC. ±
PURPOSE: ENTRANCE CONSTRUCTION

- LEGEND**
- (A) 35.00' S 3°31'00" W
 - (B) 123.70' N 86°46'51" W
 - (C) 35.00' N 2°55'19" E
 - (D) L = 124.07'
R = 11,948.10'
Δ = 0°35'42"
LC = S 86°46'51" E 124.06'
 - (E) L = 229.22'
R = 11,948.10'
Δ = 1°05'57"
LC = N 86°41'43" W 229.21'
 - (F) 99.36' S 89°37'58" W
 - (G) L = 70.41'
R = 11,948.10'
Δ = 0°20'16"
LC = N 86°18'52" W 70.41'
 - (H) 114.18' N 85°41'50" W
 - (I) L = 178.58'
R = 12,327.09'
Δ = 0°49'48"
LC = N 86°06'42" W 178.58'
 - (J) L = 2.87'
R = 300.00'
Δ = 0°32'54"
LC = N 2°34'31" E 2.87'
 - (K) 62.70' N 2°09'40" E
 - (L) L = 37.34'
R = 12,153.10'
Δ = 12,153.10'
Δ = 0°10'34"
LC = S 86°30'00" E 37.34'
 - (M) L = 120.52'
R = 12,123.10'
Δ = 0°34'11"
LC = S 85°53'21" E 120.52'
 - (N) 92.62' S 85°36'15" E
 - (O) 50.43' S 55°32'16" E
 - (P) 207.98' S 89°40'59" W
 - (Q) L = 505.09'
R = 12,153.10'
Δ = 2°22'52"
LC = S 87°46'43" E 505.05'
 - (R) L = 78.76'
R = 12,153.10'
Δ = 2°22'17"
LC = N 86°46'25" W 78.76'
 - (S) 74.37' N 85°36'15" W
 - (T) L = 112.88'
R = 11,948.10'
Δ = 0°52'29"
LC = N 85°52'30" W 112.88'
 - (U) 8.23' S 55°32'16" E

- LEGEND**
- (1) 66+22.69 23.37'
 - (2) 66+24.38 0.00'
 - (3) 66+22.30 28.72'

RIGHT OF WAY PLANS

ROUTE	FAP 319
SECTION	47-3
COUNTY	KENDALL
JOB NUMBER	R-93-025-01
STATION	50+00.00 TO 75+00.00
SCALE	1"=100' SHEET 1 OF 1