

ROUTE NO.	SECTION	COUNTY	TOTAL SHEETS	SHEET NO.
FAS 621	05-00075 -05-RS	SANGAMON	72	19

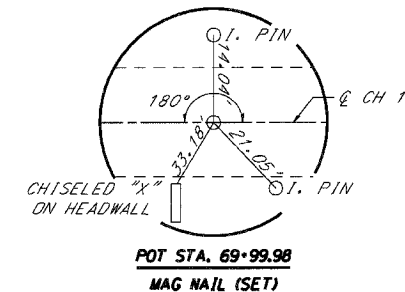
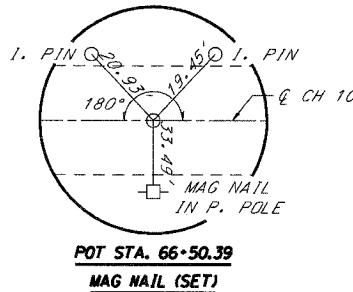
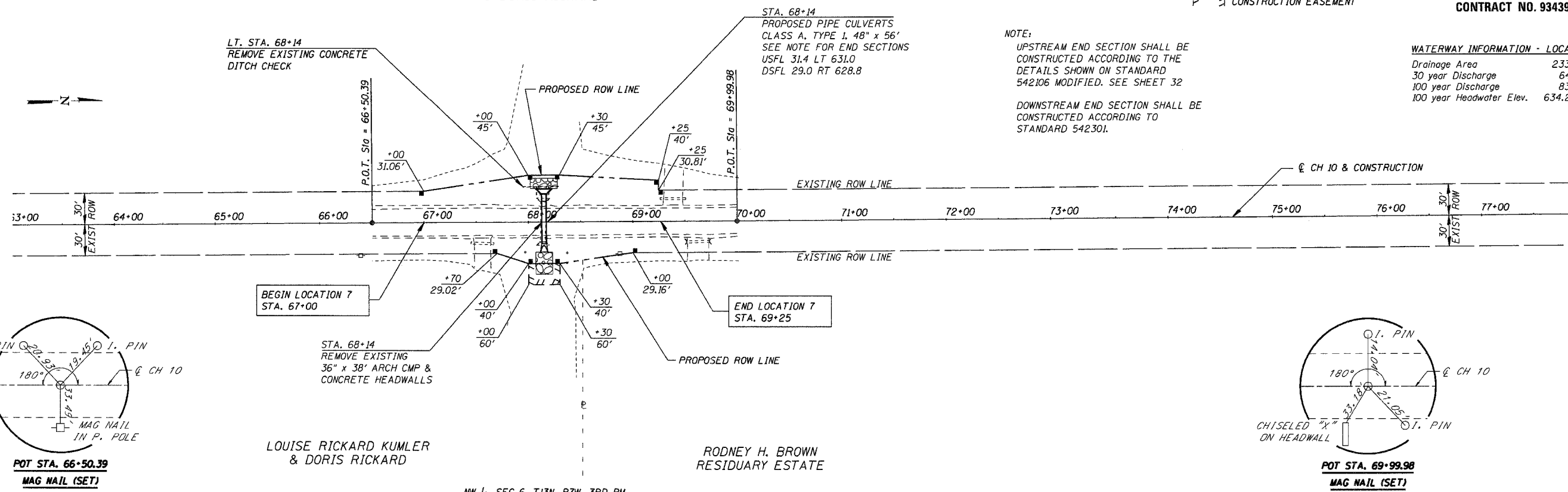
CONTRACT NO. 93439

INDICATES LIMITS OF TEMPORARY
CONSTRUCTION EASEMENT

WATERWAY INFORMATION - LOCATION 7
 Drainage Area 233 acres
 30 year Discharge 64 c.f.s.
 100 year Discharge 83 c.f.s.
 100 year Headwater Elev. 634.2

NOTE:
 UPSTREAM END SECTION SHALL BE
 CONSTRUCTED ACCORDING TO THE
 DETAILS SHOWN ON STANDARD
 542106 MODIFIED. SEE SHEET 32

 DOWNSTREAM END SECTION SHALL BE
 CONSTRUCTED ACCORDING TO
 STANDARD 542301.

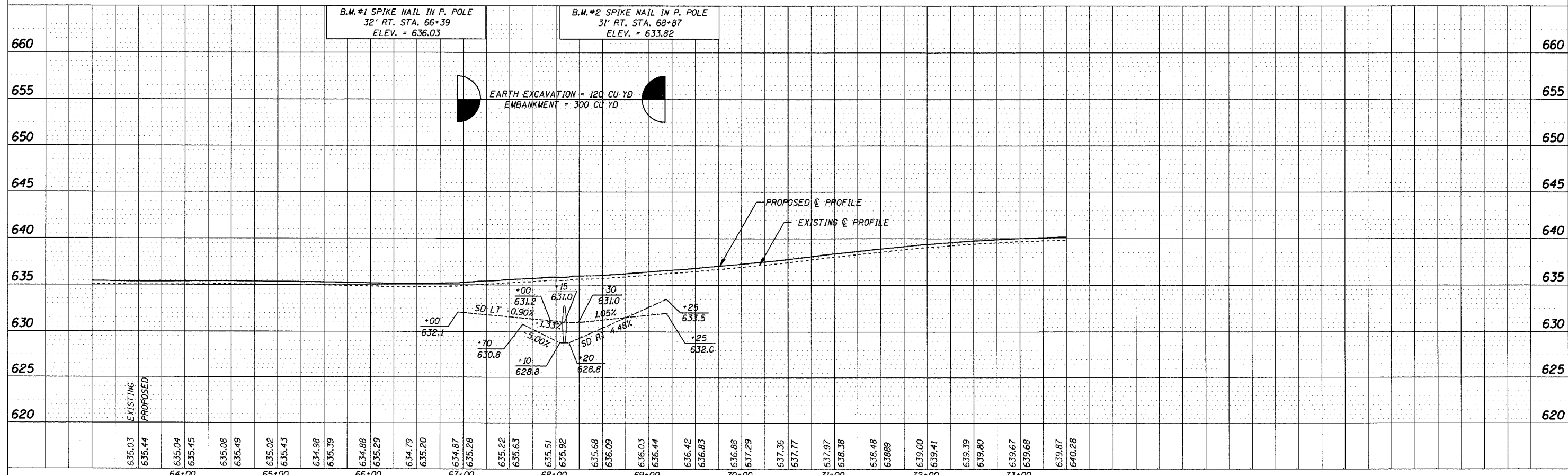


LOUISE RICKARD KUMLER
& DORIS RICKARD

RODNEY H. BROWN
RESIDUARY ESTATE

B.M. #1 SPIKE NAIL IN P. POLE
32' RT. STA. 66+39
ELEV. = 636.03
 B.M. #2 SPIKE NAIL IN P. POLE
31' RT. STA. 68+87
ELEV. = 633.82

EARTH EXCAVATION = 120 CU YD
EMBANKMENT = 300 CU YD



LOCATION 7 - CH 10 STA. 64+00 TO STA. 78+00

PLAN

DATE	
BY	
NO.	

PROFILE

DATE	
BY	
NO.	