

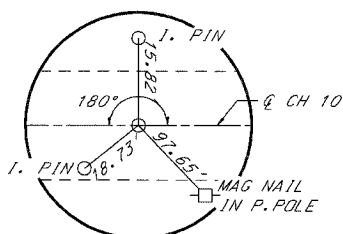
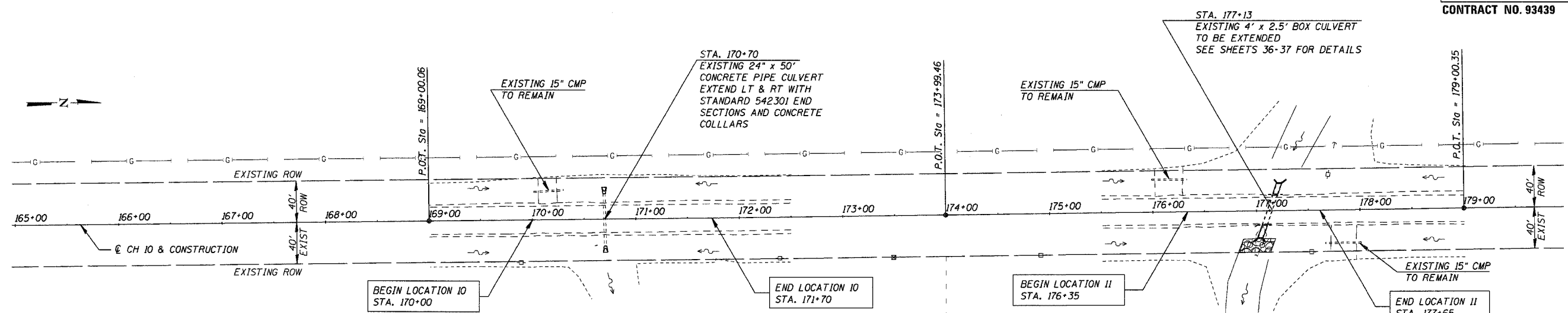
NE 1/4, SEC 25, T14N, R8W, 3RD PM

ROBERT JOHNSON

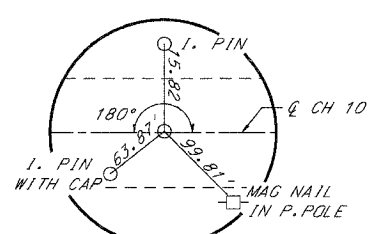
ROUTE NO.	SECTION	COUNTY	TOTAL SHEETS	SHEET NO.
FAS 621	05-00075 -05-RS	SANGAMON	72	22

CONTRACT NO. 93439

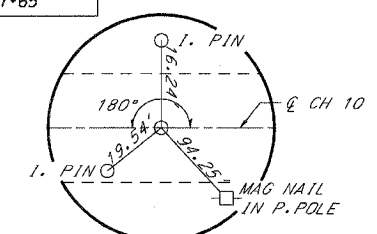
PLAN  
SURVEYED BY DATE  
PLOTTED BY  
CHECKED BY  
NOTE BOOK NO.  
FILE NAME



POT STA. 169+00.06  
SET MAG NAIL



POT STA. 173+99.46  
SET MAG NAIL



POT STA. 179+00.35  
SET MAG NAIL

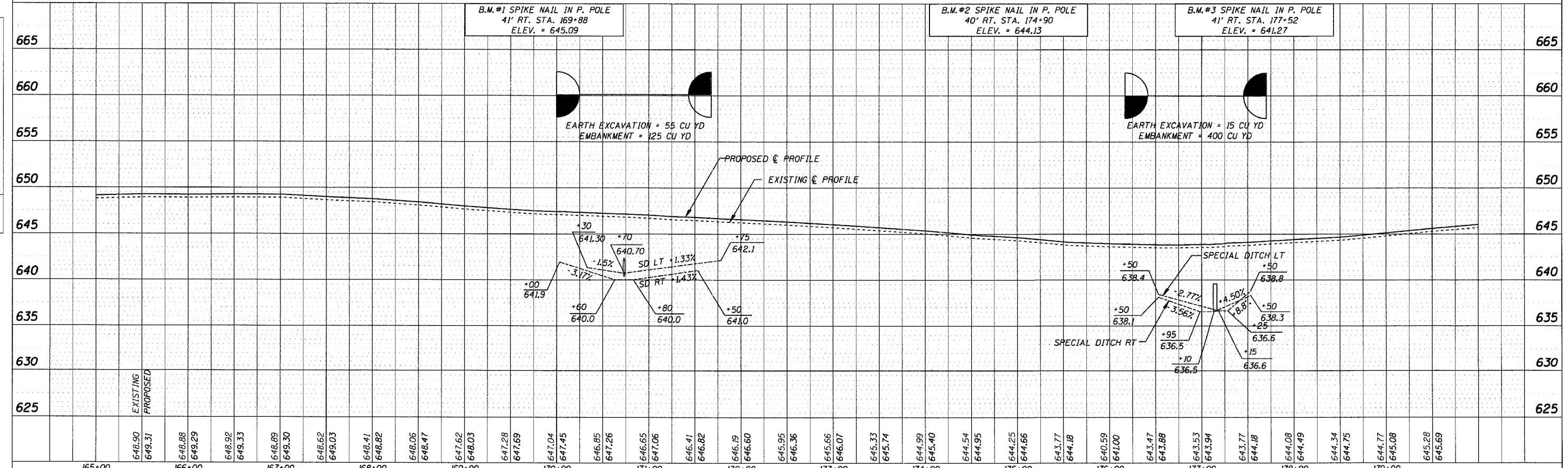
LOUIS WERRIES

SW 1/4, NW 1/4, SEC 30, T14N, R7W, 3RD PM

CHARLES ROBBINS

NW 1/4, NW 1/4, SEC 30, T14N, R7W, 3RD PM

PROFILE  
SURVEYED BY DATE  
PLOTTED BY  
CHECKED BY  
NOTE BOOK NO.  
STRUCTURE NOTATION CORD



LOCATION 10 & 11 - CH 10 STA. 165+00 TO STA. 179+00