

SE 1/4, SE 1/4, SEC 12, T14N, R8W, 3RD PM

ROUTE NO.	SECTION	COUNTY	TOTAL SHEETS	SHEET NO.
FAS 621	05-00075-05-RS	SANGAMON	72	25

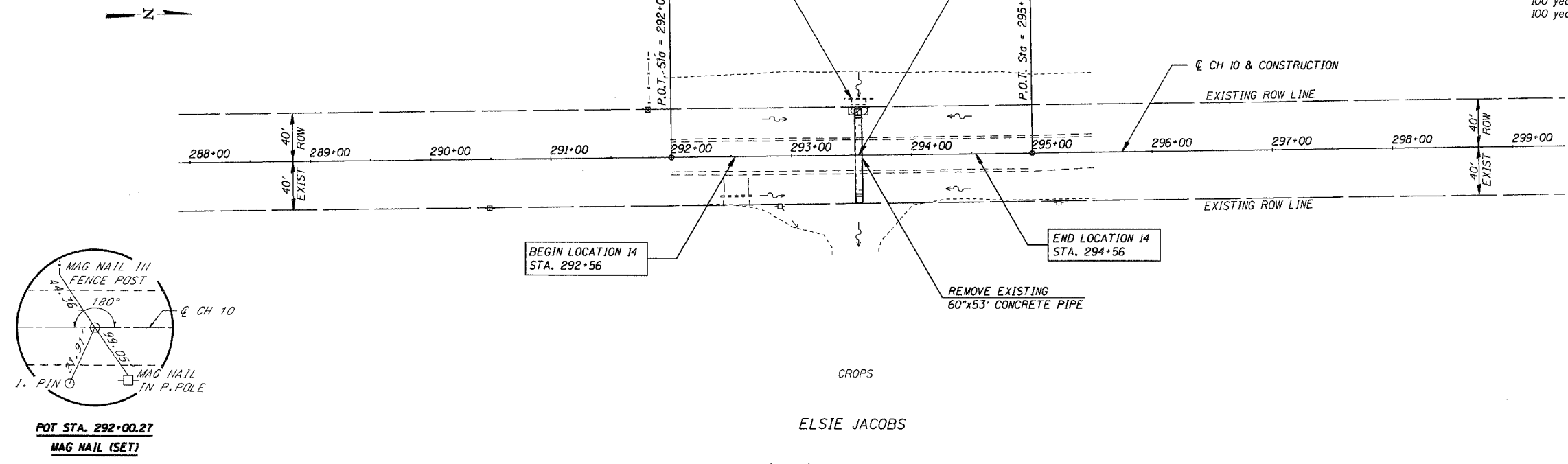
CONTRACT NO. 93439

WATERWAY INFORMATION - LOCATION 14

Drainage Area	200 acres
30 year Discharge	80 c.f.s.
100 year Discharge	104 c.f.s.
100 year Headwater Elev.	640.9

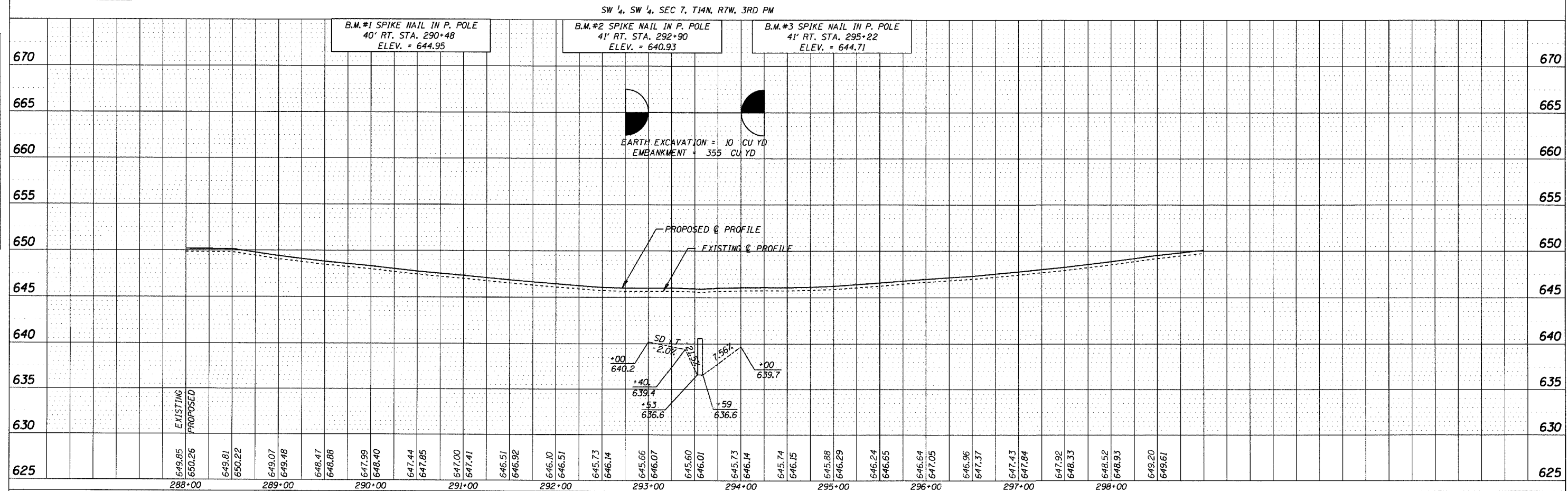
DATE	BY

SURVEYED
 ALIGNED
 CHECKED
 NO. OF MAG NAILS
 CHECKED
 PLANNED
 CHECKED
 NO. OF PINS
 CHECKED



DATE	BY

SURVEYED
 GRADES CHECKED
 STRUCK OFF
 NOTATIONS CHECKED
 NO. OF
 CHECKED



LOCATION 14 - CH 10 STA. 288+00 TO STA. 299+00