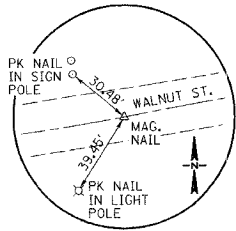
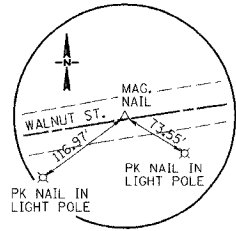


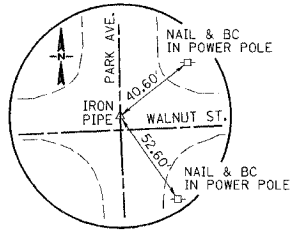
F.A.U. RTE.	SECTION	COUNTY	TOTAL SHEETS	SHEET NO.
8146	06-00029-00-TL	SANGAMON	67	15
STA. 196+00.00		TO STA. 202+30.00		
FED. ROAD DIST. NO.		ILLINOIS FED. AID PROJECT*		
*HS-8146(003)				



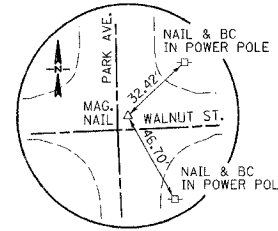
P.O.T. STA. 29+85.86
MAG. NAIL
N 1,096,364.0750
E 2,428,434.2328



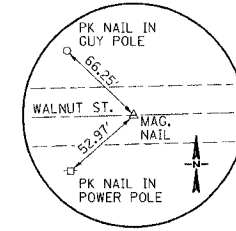
STA. 32+16.67, 1.70' LT.
MAG. NAIL
N 1,096,422.1822
E 2,428,622.3977



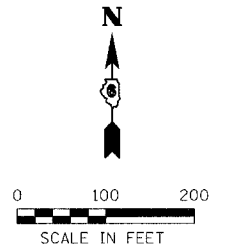
STA. 37+35.49, 7.54' LT.
IRON PIPE
N 1,096,453.8142
E 2,429,178.1417



STA. 37+47.49, 7.29' LT.
MAG. NAIL
N 1,096,454.0643
E 2,429,190.1391



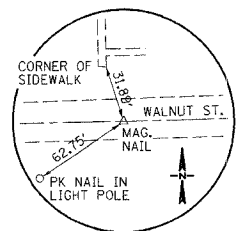
P.O.T. STA. 63+91.68
MAG. NAIL
N 1,096,509.1606
E 2,431,833.0103



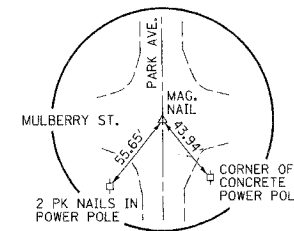
EXIST. CURVE XWAL1
P.I. STA = 27+34.15 N 1,06,319.9078 E 2,428,185.3464
Δ = 9° 08' 01.68" (LT.)
D = 1° 48' 54.01"
R = 3,156.79'
T = 252.15'
L = 503.24'
E = 10.05'
P.C. STA = 24+82.00 N 1,096,315.8191 E 2,427,933.2260
P.T. STA = 29+85.24 N 1,096,363.9664 E 2,428,433.6208

PROP. CURVE W300
P.I. STA = 40+89.48 N 1,096,461.1940 E 2,429,532.1357
Δ = 1° 13' 13.79" (RT.)
D = 1° 08' 45.30"
R = 5,000.00'
T = 53.26'
L = 106.51'
E = 0.28'
P.C. STA = 40+36.22 N 1,096,458.9501 E 2,429,478.9268
P.T. STA = 41+42.73 N 1,096,462.3040 E 2,429,585.3804

PROP. CURVE W200
P.I. STA = 33+67.37 N 1,096,430.7355 E 2,428,809.8710
Δ = 7° 38' 53.26" (RT.)
D = 1° 25' 56.82"
R = 4,000.00'
T = 267.37'
L = 533.94'
E = 8.93'
P.C. STA = 31+00.00 N 1,096,384.0186 E 2,428,546.6169
P.T. STA = 36+33.94 N 1,096,442.0006 E 2,429,077.0008



P.C. STA. 24+82.00
MAG. NAIL
N 1,096,315.8191
E 2,427,933.2260



P.O.T. STA. 195+41.60
MAG. NAIL
N 1,095,988.2464
E 2,429,195.6078

BENCHMARKS	
TBM #1:	STA. 23+73.45, 30.35' LT. TOP OF R.O.W. MARKER, N.E. CORNER OF EAST ST. & WALNUT ST. INTERSECTION ELEV. 605.57
TBM #2:	STA. 40+30, 41' LT. SOUTH CAP BOLT ON FIRE HYDRANT AT EAST ENTRANCE OF CASEY'S GENERAL STORE ELEV. 604.19
TBM #3:	STA. 47+49, 31.5' LT. R.R. SPIKE IN POWER POLE AT EAST ENTRANCE OF JAYCEE'S PARK ELEV. 600.24

ILLINOIS DEPARTMENT OF TRANSPORTATION
HORIZONTAL & VERTICAL CONTROL

VILLAGE OF CHATHAM
SECTION 06-00029-00-TL
SANGAMON COUNTY
WALNUT ST. / PARK AVE. IMPROVEMENTS

SCALE: VERT. 1" = 20'
DATE: 2/6/07
DRAWN BY: SUTHEARD
CHECKED BY: BOTT
COMPUTER FILE NO.
06152HVC
PROJECT 06152
4/27/07 - FAV

REVISIONS	
NAME	DATE



PLOT DATE = 4/27/2007
FILE NAME = J:\06152\DRAWINGS\06152HVC.dgn
DRAWN BY = JTB
MODEL = 06152
OPERATOR = Franky