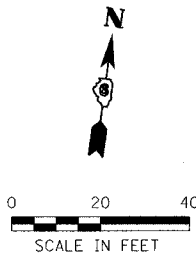
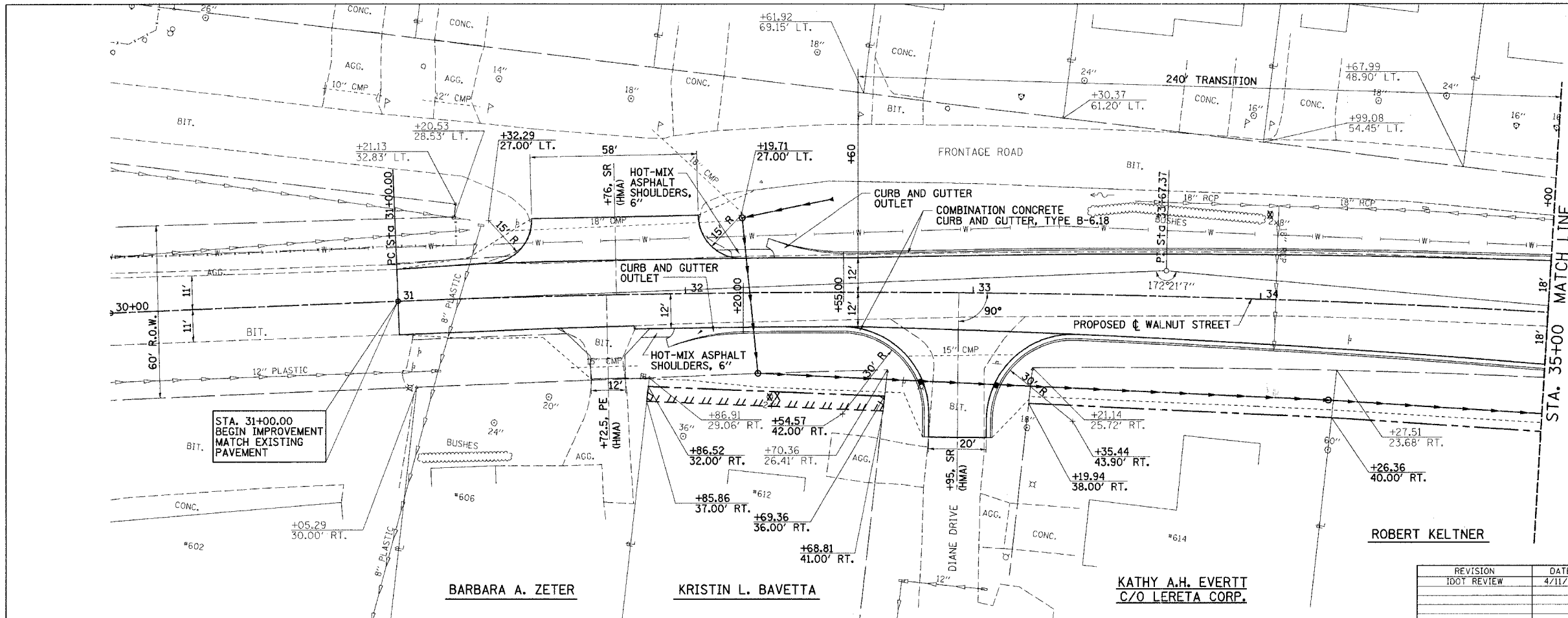


F.A.U. RTE.	SECTION	COUNTY	TOTAL SHEETS	SHEET NO.
8146	06-00029-00-TL	SANGAMON	67	19
STA. 30+00		TO STA. 35+00		
FED. ROAD DIST. NO.		ILLINOIS	FED. AID PROJECT #	
		*HS-8146(003)		

PROP. CURVE DATA
 PI STA. = 33+67.37
 $\Delta = 7^\circ 38' 53''$ (RT)
 $D = 1^\circ 25' 57''$
 $R = 4,000.00'$
 $T = 267.37'$
 $L = 533.94'$
 $E = 8.93'$
 P.C. STA = 31+00.00
 P.T. STA = 36+33.94
 SE = NORMAL CROWN



PLAN	DATE	BY
REVISION		
NOTE BOOK		
NO.		



LEGEND

- EXISTING R.O.W.
- - - CONST. LIMITS
- - - - - PROPOSED R.O.W.
- ||||| TEMP. CONST. EASEMENT

REVISION	DATE	BY
DOT REVIEW	4/11/07	MML

GREEN & BRADFORD, INC.
 REGISTERED PROFESSIONAL ENGINEERS
 1001 W. BROADWAY, SUITE 100, CHAMPAIGN, ILLINOIS 61821
 (312) 231-1111 FAX (312) 231-1112 WWW.GREEN-AND-BRADFORD.COM

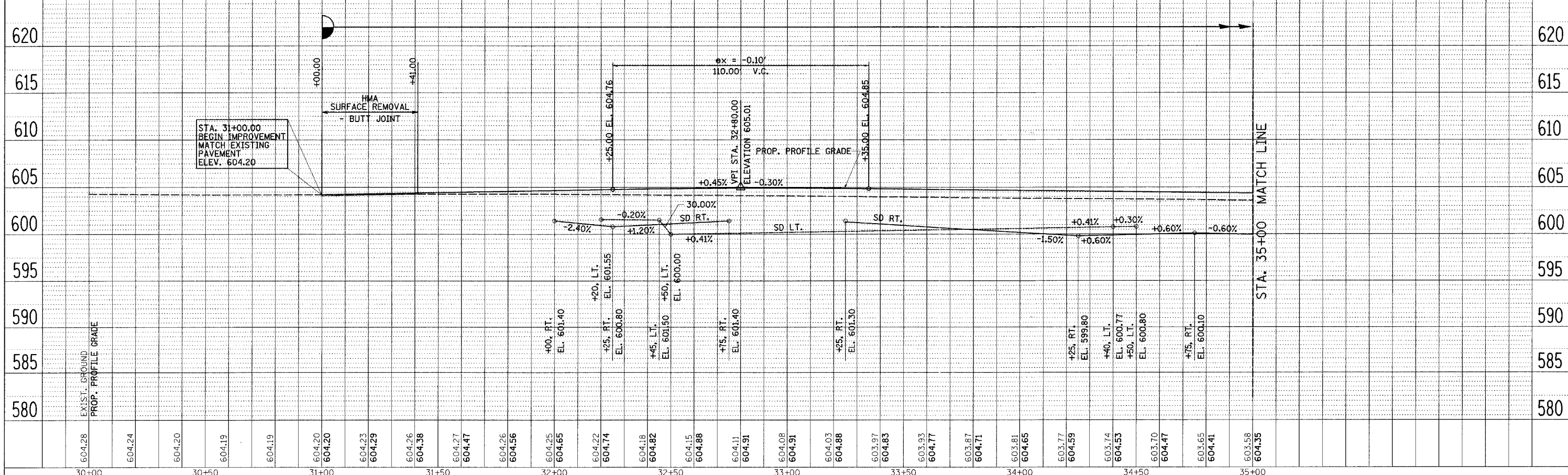
COMPUTER FILE NO. 06152PLN1
 PROJECT 06152
 4/27/07 - FAV

BARBARA A. ZETER

KRISTIN L. BAVETTA

KATHY A.H. EVERTT
 C/O LERETA CORP.

PROFILE	DATE	BY
REVISION		
NOTE BOOK		
NO.		



PLT DATE = 4/27/2007
 FILE NAME = J:\06152\DRAWINGS\06152PLN1.dgn
 SCALE = 1" = 40'
 MODEL = 06152
 OPERATOR = Franky

VILLAGE OF CHATHAM - WALNUT STREET - PLAN & PROFILE
STA. 30+00 TO STA. 35+00