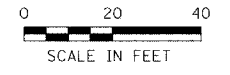


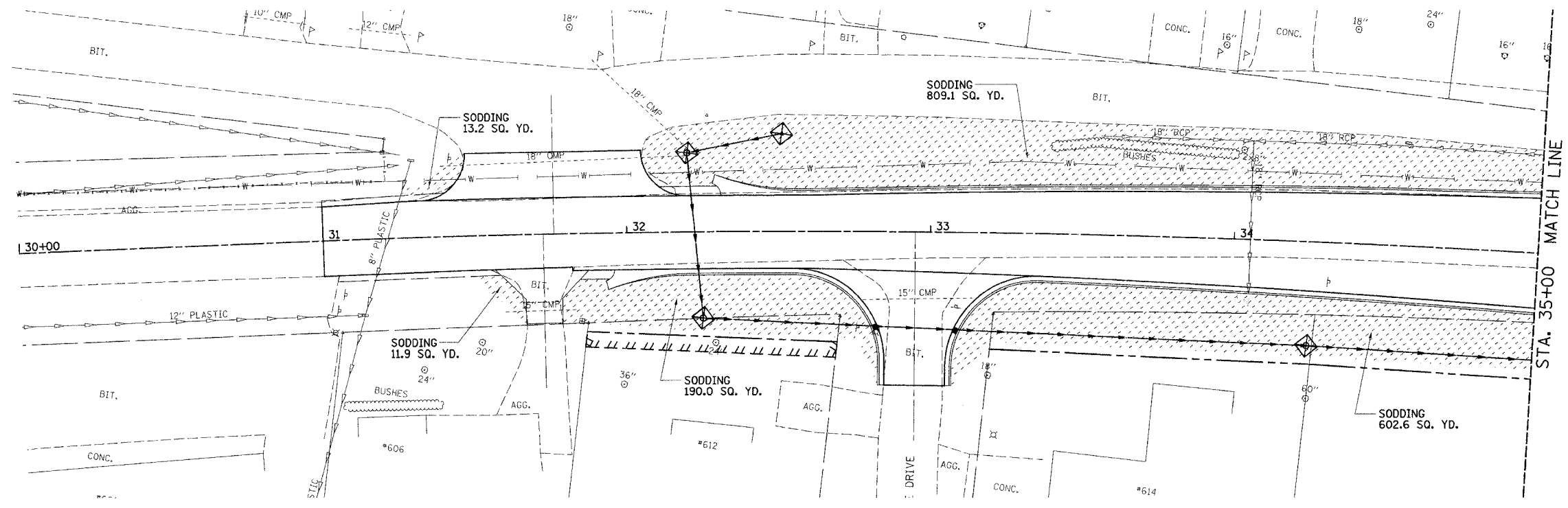
F.A.U. RTE.	SECTION	COUNTY	TOTAL SHEETS	SHEET NO.
8146	06-00029-00-TL	SANGAMON	67	23
STA. 30+00.00 TO STA. 40+00.00				
FED. ROAD DIST. NO.	ILLINOIS	FED. AID PROJECT #		

\*HS-8146(003)



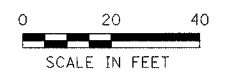
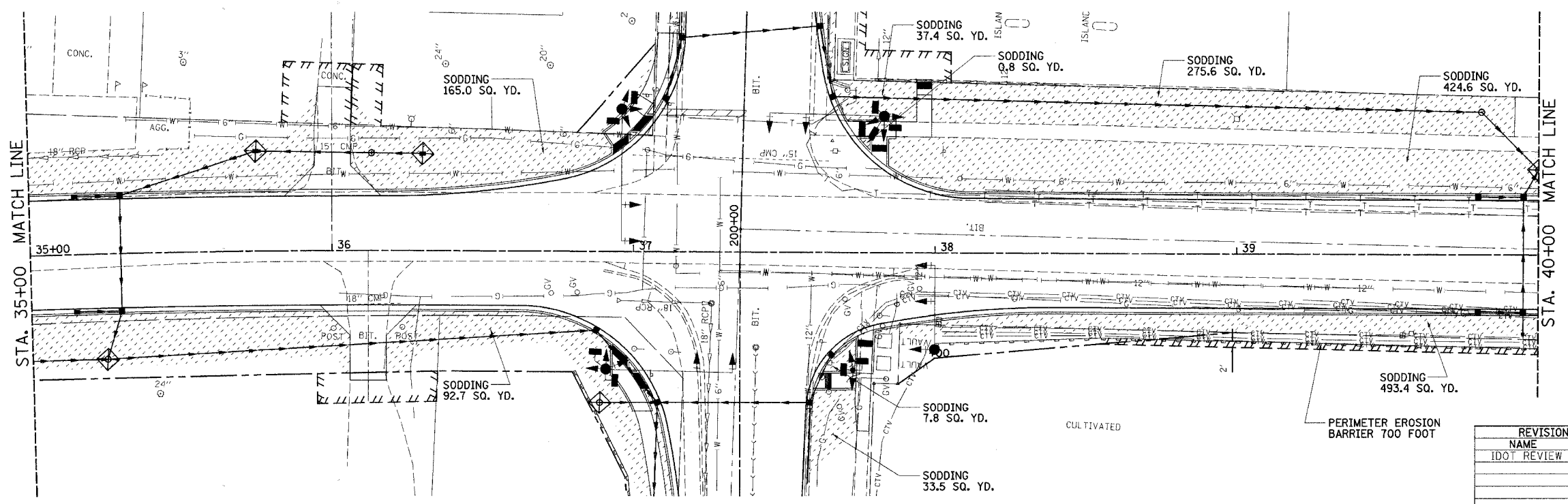
LEGEND

- SODDING
- SEEDING
- INLET AND PIPE PROTECTION
- PERIMETER EROSION BARRIER



LEGEND

- SODDING
- SEEDING
- INLET AND PIPE PROTECTION
- PERIMETER EROSION BARRIER



REVISIONS	
NAME	DATE
IDOT REVIEW	4/11/07

ILLINOIS DEPARTMENT OF TRANSPORTATION  
**EROSION CONTROL PLAN**

VILLAGE OF CHATHAM  
SECTION 06-00029-00-TL  
SANGAMON COUNTY  
WALNUT ST. / PARK AVE. IMPROVEMENTS

SCALE: VERT. \_\_\_\_\_  
HORIZ. 1" = 20'  
DATE: 2/01/07

DRAWN BY: SUTHEARD  
CHECKED BY: BOTT

COMPUTER FILE NO.  
06152EC  
PROJECT 06152  
4/27/07 - FAV

**GREENE & BRADFORD, INC.**  
OF STENOZ  
CONSULTING ENGINEERS  
PROFESSIONAL ENGINEERS  
PROFESSIONAL & STRUCTURAL ENGINEERING CORPORATION  
801 1/2 BLDG. 100 THE ROCK FLD. BLDG. - GIBBY SPRING, MISSOURI

PLT DATE = 4/27/2007  
FILE NAME = J:\06152\UPHAIN\MS152EC.dgn  
SCALE = 1" = 20'  
MODE = 2D  
OPERATOR = Franky

**VILLAGE OF CHATHAM - WALNUT STREET - EROSION CONTROL PLAN  
STA. 30+00 TO STA. 40+00**