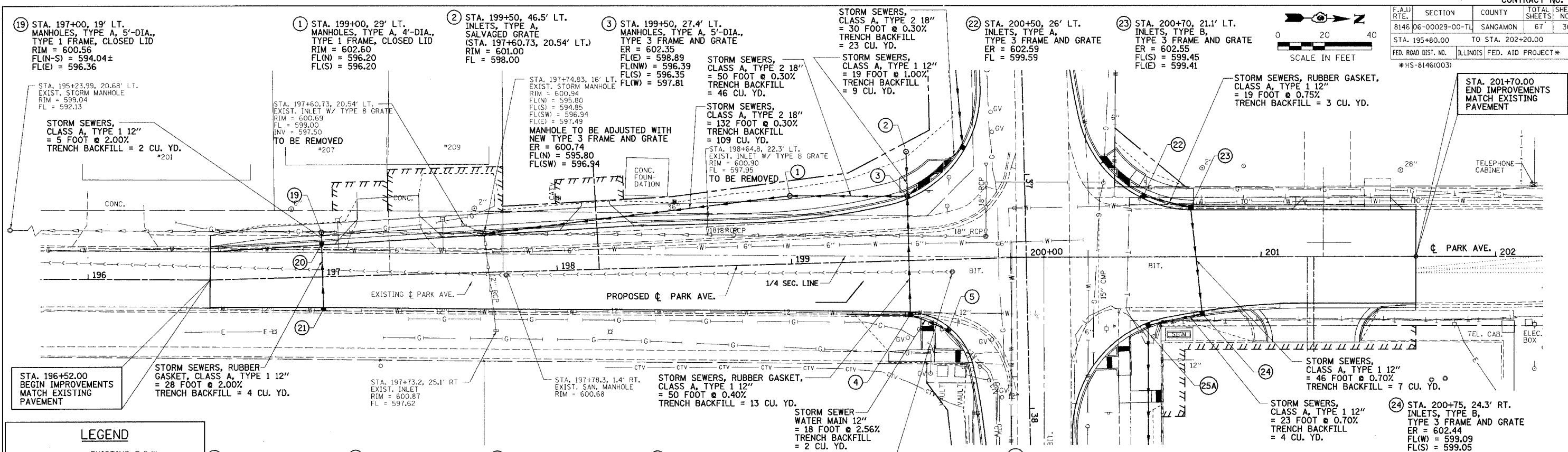
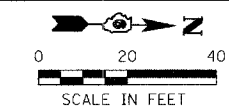


F.A.U. RTE.	SECTION	COUNTY	TOTAL SHEETS	SHEET NO.
8146 06-00029-00-TL		SANGAMON	67	30
STA. 195+80.00		TO STA. 202+20.00		
FED. ROAD DIST. NO.	ILLINOIS	FED. AID PROJECT #		
*HS-8146(003)				



LEGEND

- EXISTING R.O.W.
- - - - - CONST. LIMITS
- PROPOSED R.O.W.
- ||||| TEMP. CONST. EASEMENT

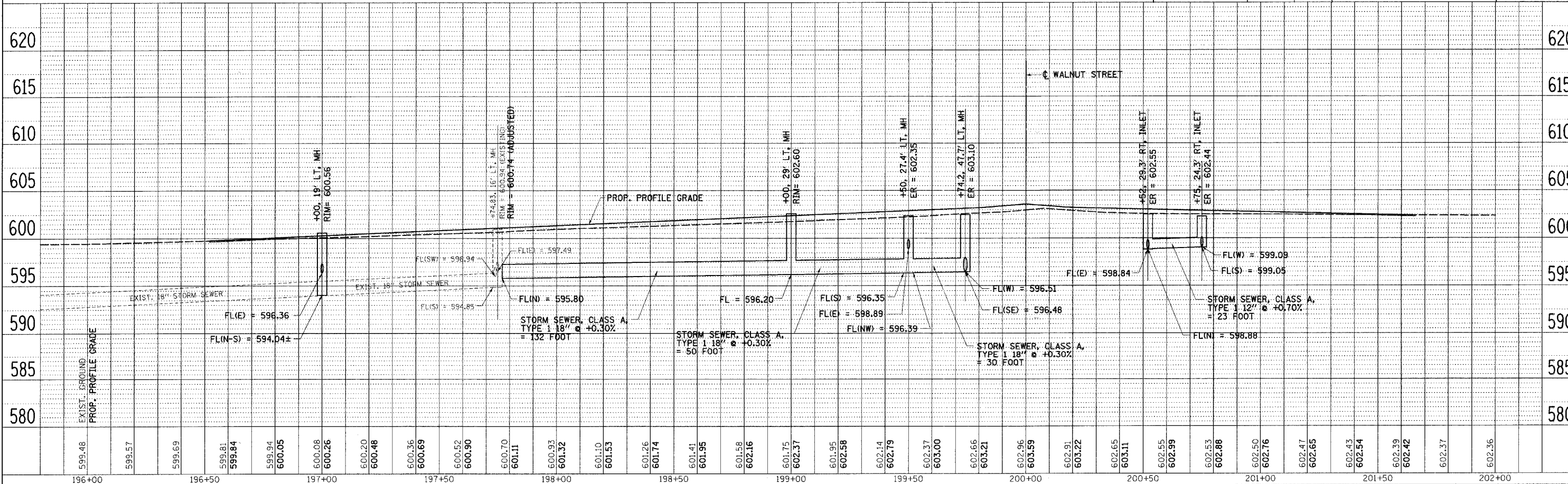
- 20 STA. 197+00, 13.61' LT. INLETS, TYPE B, TYPE 3 FRAME AND GRATE ER = 600.02 FL (E-W) = 596.46
- 21 STA. 197+00, 13.22' RT. INLETS, TYPE A, TYPE 3 FRAME AND GRATE ER = 600.02 FL = 597.02
- 4 STA. 199+50, 23.1' RT. INLETS, TYPE B, TYPE 3 FRAME AND GRATE ER = 602.09 FL(W) = 599.09 FL(N) = 599.13
- 5 STA. 199+66, 30.2' RT. INLETS, TYPE A, TYPE 3 FRAME AND GRATE ER = 602.59 FL = 599.59

REVISION	DATE	BY
TDOT REVIEW	4/11/07	MML

GREENE & BRADFORD, INC.
OF SPRINGFIELD

PROJECT 06152
5/24/07 - MDS

COMPUTER FILE NO. 06152PLN4



DATE: 5/24/2007
 FILE NAME: J:\06152\DRAWINGS\06152PLN.dwg
 PLOT SCALE: 1/8" = 1' IN.
 OPERATOR: mml

**VILLAGE OF CHATHAM - PARK AVENUE - DRAINAGE PLAN & PROFILE
 STA. 196+00 TO STA. 202+20**