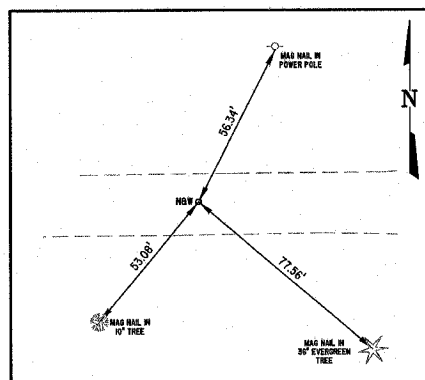
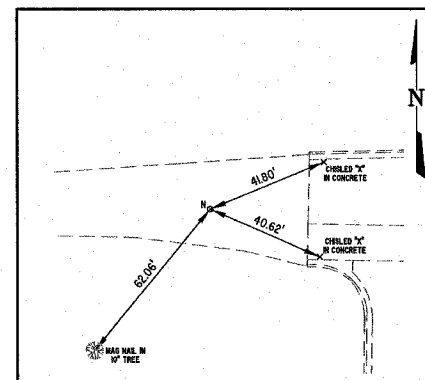


ROUTE NO.	SECTION	COUNTY	TOTAL SHEETS	SHEET NO.
FAU 8384	#	EFFINGHAM	95	13
FED. ROAD DIST. NO. 7	ILLINOIS	FED. AID PROJECT - HPP-408004		

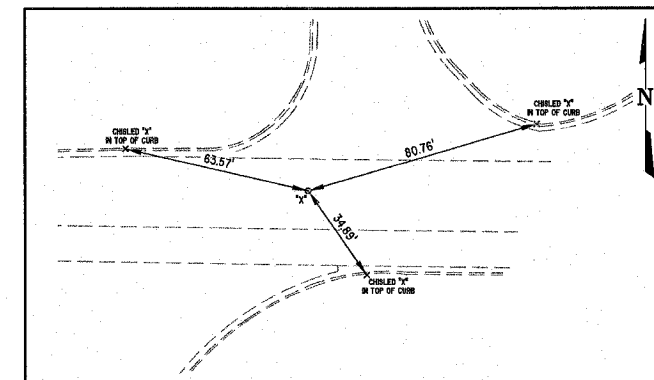
* SECTION 05-00094-01-PY
SECTION 03-00098-00-BR
CONTRACT #95503



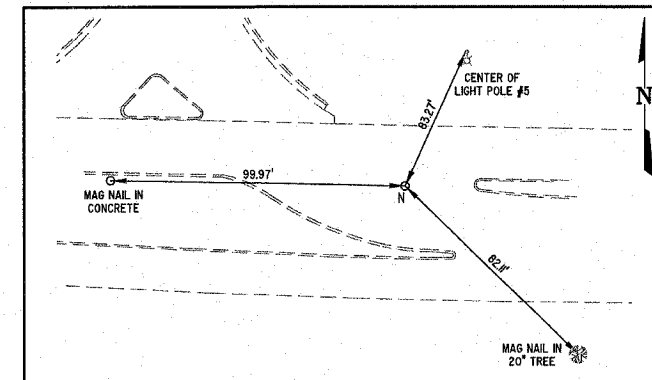
P.O.T. STA. 32+69.69
NAIL and WASHER FOUND
(FAYETTE AVENUE)



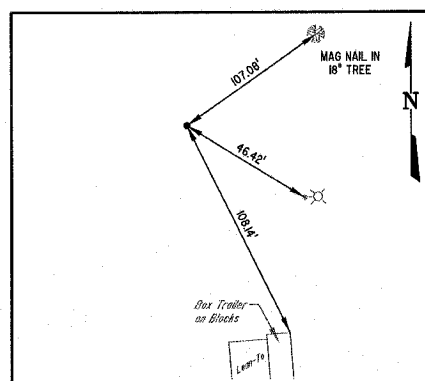
P.I. STA. 33+92.69
NAIL FOUND
(FAYETTE AVENUE)



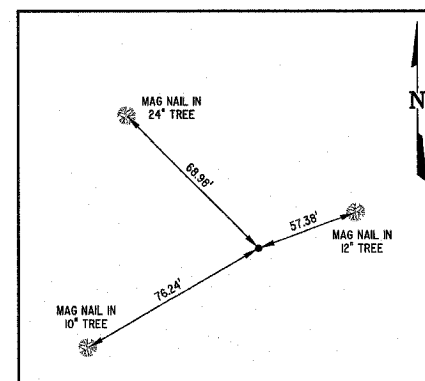
P.I. STA. 35+42.65
CHISELED "X" FOUND
(FAYETTE AVENUE)



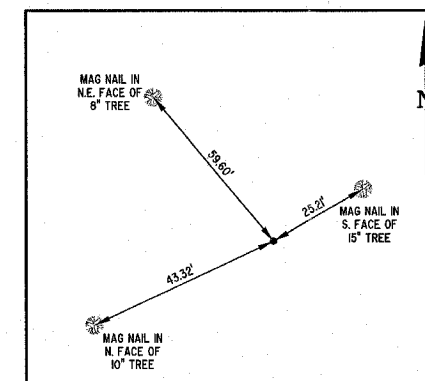
P.O.T. STA. 44+00
MAG NAIL FOUND
(FAYETTE AVENUE)



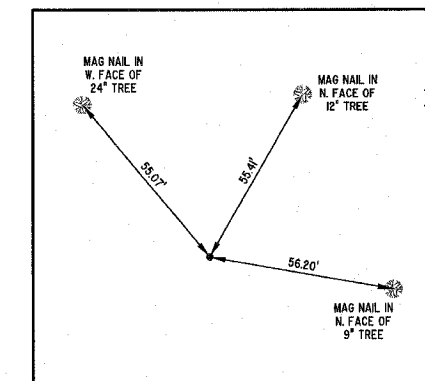
P.O.T. STA. 405+00
1/2" IRON PIN
(OUTER BELT WEST)



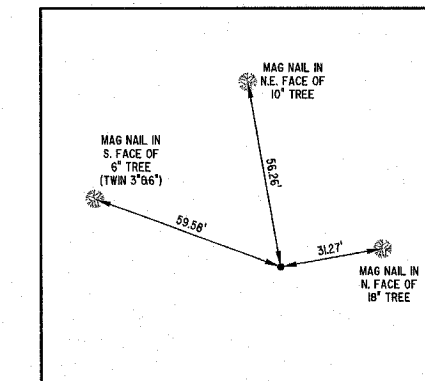
P.I. STA. 41+00.01
1/2" IRON PIN
(OUTER BELT WEST)



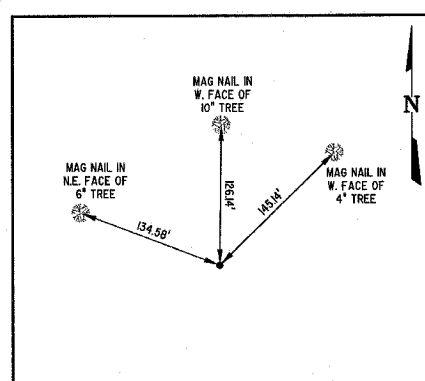
P.O.T. STA. 42+00
1/2" IRON PIN
(OUTER BELT WEST)



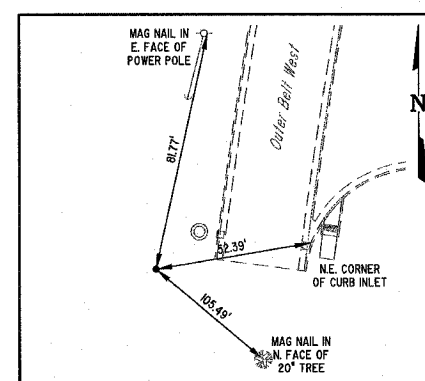
P.O.C. STA. 426+00
1/2" IRON PIN
(OUTER BELT WEST)



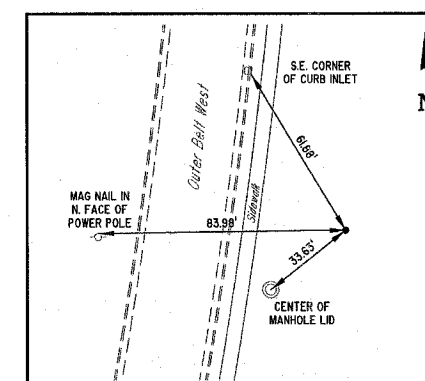
P.O.T. STA. 433+00
1/2" IRON PIN
(OUTER BELT WEST)



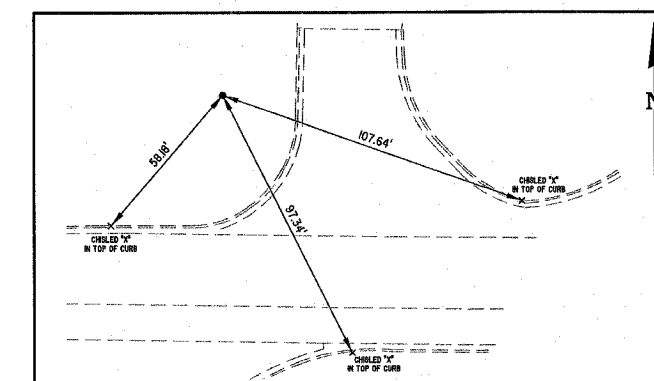
P.C. STA. 440+51.90
1/2" IRON PIN
(OUTER BELT WEST)



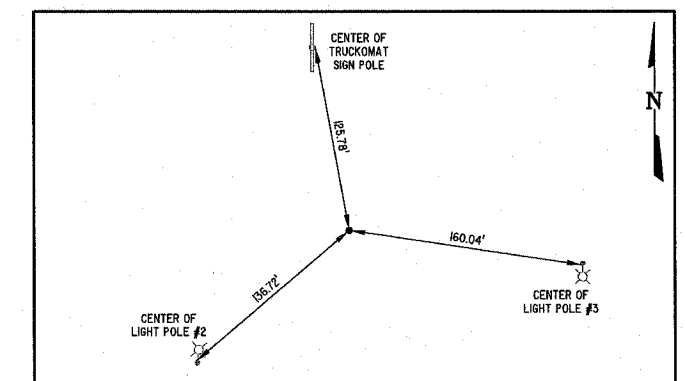
TRAVERSE POINT #4122
1/2" IRON PIN
STA. 442+67.35
33.00 LT



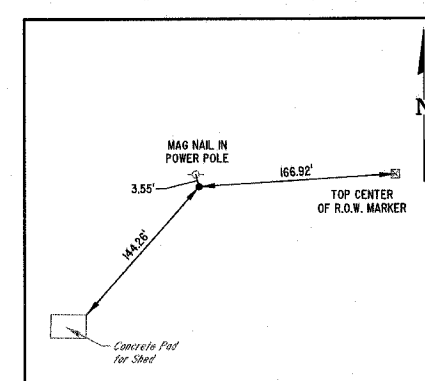
TRAVERSE POINT #4115
1/2" IRON PIN
STA. 449+61.63
54.20 RT



TRAVERSE POINT #427
1/2" IRON PIN
STA. 400+59.25
53.43 RT



TRAVERSE POINT #211
1/2" IRON PIN
STA. 40+74.48
58.27 RT



TRAVERSE POINT #212
1/2" IRON PIN, STA. 405+23.66, 64.07 RT

MILANO & GRUNLOH ENGINEERS, LLC
14 WEST WASHINGTON
P.O. BOX 897
EFFINGHAM, ILLINOIS 62401
PHONE: (617) 347-7282
(800) 677-4714
FAX #: (617) 342-3433

REFERENCE TIES
CENTERLINE - FAYETTE AVENUE,
CENTERLINE - OUTER BELT WEST
AND TRAVERSE POINTS
CITY OF EFFINGHAM, ILLINOIS

File name: S:\DWG\05\05014\dwg\Alignment Ties.dwg
Plot date: 03/30/07 at 12:00