

ROUTE NO.	SECTION	COUNTY	TOTAL SHEETS	SHEET NO.
FAU 6384	†	EFFINGHAM	95	14
FED. ROAD DIST. NO. 7	ILLINOIS	FED. AID PROJECT- NPP-40960341		

* SECTION 05-00094-01-PV
SECTION 03-00098-00-BR
CONTRACT #95503

**OUTER BELT WEST
PROPOSED CURVE #1**

PI STA=48+00.01
Delta=14°24'42"
D=02°30'00"
T=289.77'
R=229.83'
L=576.47'
C=574.95'
E=18.25'
M=10'
PC STA=408+0.24
PT STA=415+96.71
M.S.E.=2.50X
ATTAIN:
STA 407+43.49 TO STA 408+32.49
STA 415+33.00 TO STA 414+22.00

PROPOSED CURVE #2

PI STA=426+39.94
Delta=14°14'28"
D=02°30'00"
T=286.30'
R=229.83'
L=569.65'
C=568.18'
E=17.88'
M=7.68'
PC STA=423+53.64
PT STA=429+23.29
M.S.E.=2.50X
ATTAIN:
STA 422+86.89 TO STA 423+75.89
STA 429+01.04 TO STA 429+90.04

PROPOSED CURVE #3

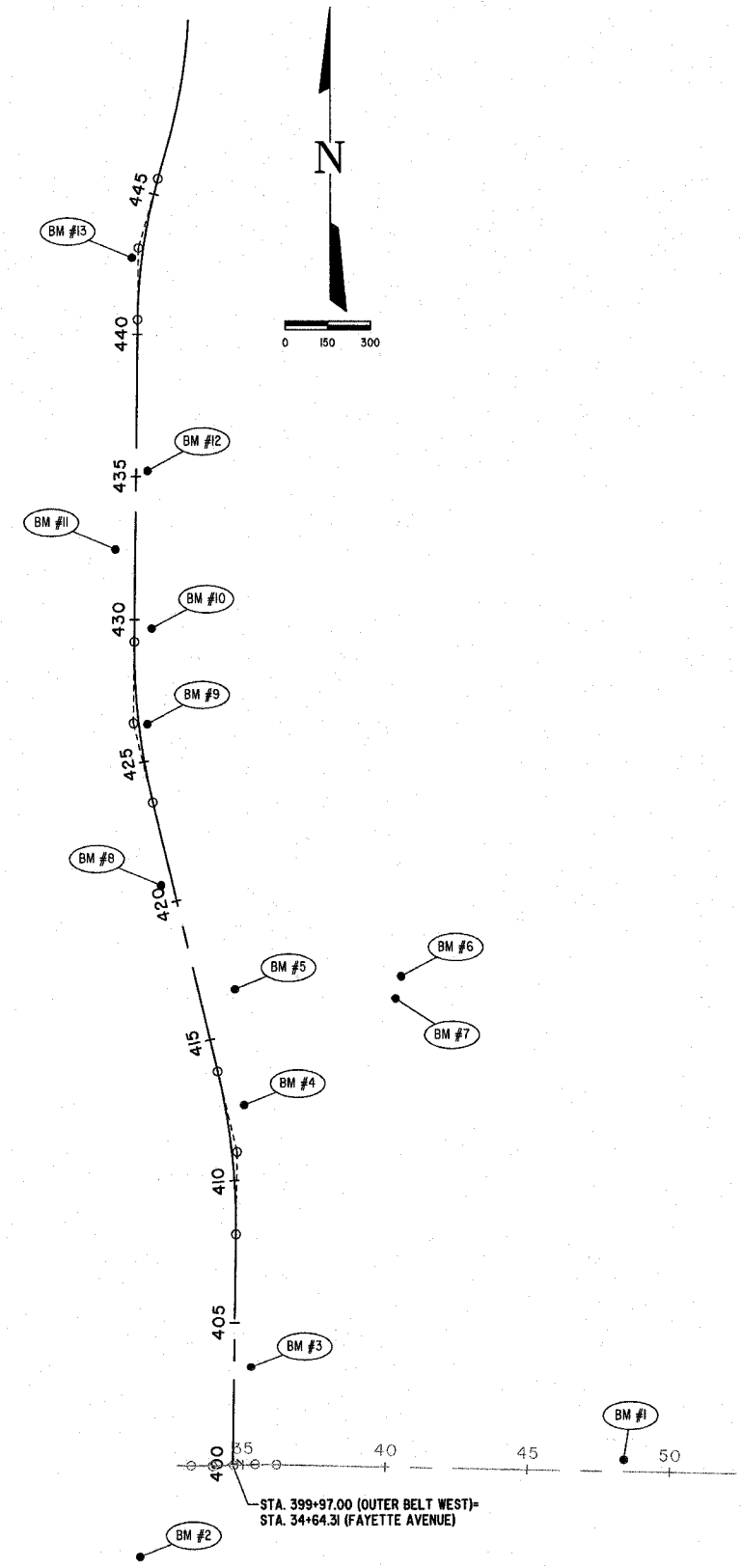
PI STA=443+05.32
Delta=15°07'01"
D=03°00'00"
T=253.42'
R=1909.86'
L=903.90'
C=502.43'
E=16.74'
M=6.55'
PC STA=440+51.90
PT STA=445+55.80

**FAYETTE AVENUE
SURVEY CENTERLINE
EXISTING CURVE #1**

PI STA=35+92.69
Delta=3°21'50"
D=02°14'36"
T=75.00'
R=2554.16'
L=149.36'
C=449.93'
E=11.07'
M=11.07'
PC STA=35+17.69
PT STA=34+67.65

EXISTING CURVE #2

PI STA=35+42.65
Delta=3°32'20"
D=02°27'36"
T=75.00'
R=2427.78'
L=149.33'
C=449.93'
E=11.07'
M=11.07'
PC STA=34+67.65
PT STA=36+17.60



BM #1

TOP OF IRON PIN AT NORTHWEST CORNER OF OVERPASS
40' LT, STA. 48+39.19
ELEVATION=599.09

BM #2

CHISELED SQUARE IN CONCRETE BASE OF THE LIGHT POLE AT PETRO TRUCK ENTRANCE
ELEVATION=584.74

BM #3

TOP NORTHWEST CORNER OF THE NORTHERN MOST I-BEAM ALONG THE WEST SIDE OF TRUCKMATT PAVEMENT AT 59.5' RI, Sta. 403+43.4
ELEVATION=592.18

BM #4

RAILROAD SPIKE IN TREE AT 67' RI, Sta. 412+55
ELEVATION=590.31

BM #5

RAILROAD SPIKE IN TREE AT 127' RI, Sta. 416+52
ELEVATION=536.44

BM #6

CHISELED SQUARE IN NORTHWEST CONCRETE BRIDGE SUPPORT
ELEVATION=539.07

BM #7

RAILROAD SPIKE IN POWER POLE
ELEVATION=543.31

BM #8

RAILROAD SPIKE IN TREE AT 40' LI, Sta. 420+65
ELEVATION=575.26

BM #9

RAILROAD SPIKE IN TREE AT 30' RI, Sta. 426+30
ELEVATION=562.65

BM #10

RAILROAD SPIKE IN TREE AT 60' RI, Sta. 429+70
ELEVATION=592.69

BM #11

RAILROAD SPIKE IN TREE AT 70' LI, Sta. 432+45
ELEVATION=593.44

BM #12

RAILROAD SPIKE IN TREE AT 40' RI, Sta. 435+20
ELEVATION=594.56

BM #13

TOP OF IRON PIN (CONTROL POINT #4122)
35' LT, STA. 442+67.35
ELEVATION=595.50

OUTER BELT WEST

Station	Northing	Easting	Description
399+97.00	893688.875	915972.456	POT
408+10.24	894502.026	915984.683	PC
411+00.01	894791.759	915989.039	PI
413+86.71	895073.459	915921.147	PT
423+53.64	896013.468	915694.596	PC
426+39.94	896291.799	915627.516	PI
429+23.29	896578.078	915630.968	PT
440+51.90	897706.814	915644.576	PC
443+05.32	897960.014	915647.631	PI
448+55.79	898203.849	915716.665	PT

FAYETTE AVENUE

Station	Northing	Easting	Description
32+69.89	893688.170	915777.874	POT
33+17.89	893687.306	915825.869	PC
33+92.69	893685.956	915900.857	PI
34+64.31	893688.875	915972.456	POC
34+67.65	893689.009	915975.795	PRC
35+42.65	893692.061	916050.733	PI
36+17.60	893690.482	916125.716	PT
45+00.00	893671.904	917007.921	POT

MILANO & GRUNDLOH ENGINEERS, LLC
14 WEST WASHINGTON
EFFINGHAM, ILLINOIS 62401
PHONE: (617) 541-7262
(800) 677-2714
FAX #: (617) 542-3433

ALIGNMENT AND BENCHMARKS
OUTER BELT WEST AND
FAYETTE AVENUE
CITY OF EFFINGHAM, ILLINOIS

File name: S:\DWG\05\05014.dwg; Alignment Title.dwg
Plot date: 03/30/07 at 12:00