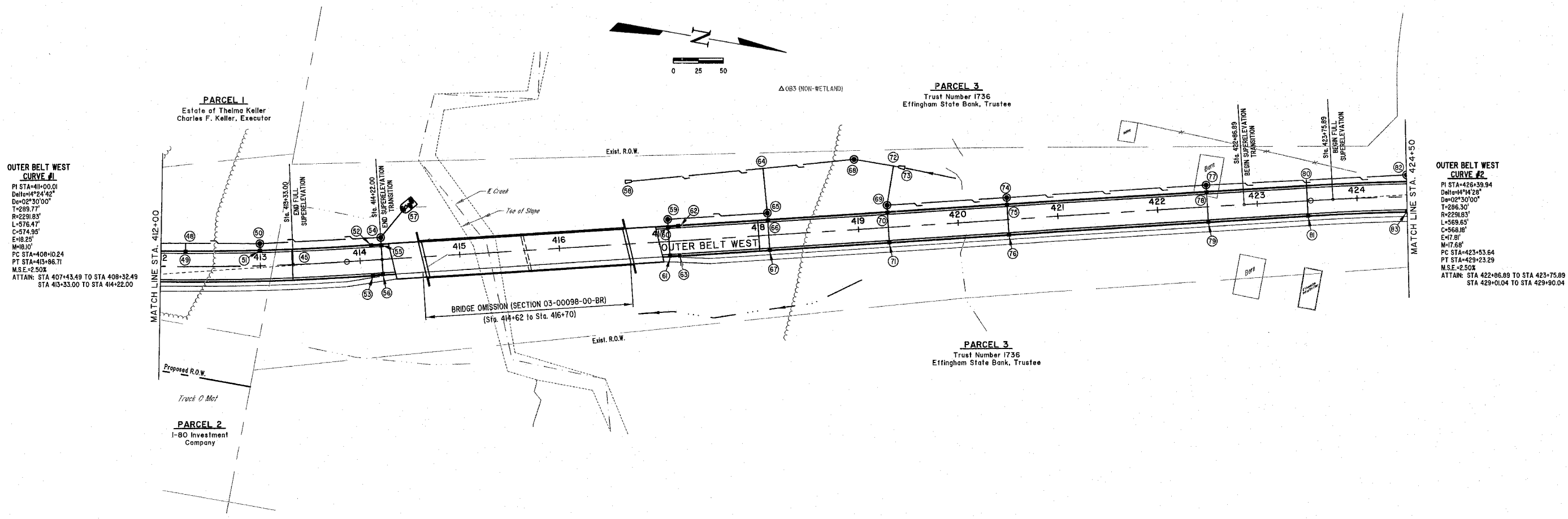


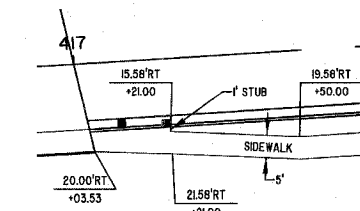
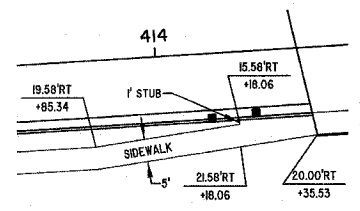
ROUTE NO.	SECTION	COUNTY	TOTAL SHEETS	SHEET NO.
FAU 8384	*	EFFINGHAM	95	18

FED. ROAD DIST. NO. 7 ILLINOIS FED. AID PROJECT-HPF-409104
 * SECTION 05-00094-01-PV
 SECTION 03-00098-00-BR
 CONTRACT #95503



OUTER BELT WEST CURVE #1
 PI STA=411+00.01
 Delta=4°24'42"
 D=0°30'00"
 T=289.77'
 R=2291.83'
 L=576.47'
 C=574.95'
 E=18.25'
 M=18.10'
 PC STA=408+10.24
 PT STA=413+86.71
 M.S.E.=2.50%
 ATTAIN: STA 407+43.49 TO STA 408+32.49
 STA 413+33.00 TO STA 414+22.00

OUTER BELT WEST CURVE #2
 PI STA=426+39.94
 Delta=4°14'28"
 D=0°30'00"
 T=286.30'
 R=2291.83'
 L=569.65'
 C=568.80'
 E=17.81'
 M=17.68'
 PC STA=423+53.64
 PT STA=429+23.29
 M.S.E.=2.50%
 ATTAIN: STA 422+86.89 TO STA 423+75.89
 STA 429+01.04 TO STA 429+90.04



BM #4
 RAILROAD SPIKE IN TREE
 AT 67'RT, Sta. 412+55
 ELEVATION=590.31

BM #5
 RAILROAD SPIKE IN TREE
 AT 127'RT, Sta. 416+52
 ELEVATION=536.44

BM #8
 RAILROAD SPIKE IN TREE
 AT 40'Lt, Sta. 420+55
 ELEVATION=575.26

OUTER BELT WEST

MILANO & GRUNLOH ENGINEERS, LLC
 84 WEST WASHINGTON
 P.O. BOX 897
 EFFINGHAM, ILLINOIS 62401
 Phone: (217) 347-7325
 (800) 577-2714
 Fax #: (217) 342-3433
 Web Address: www.mgaengineers.com
 Design Firm #: 184-003108

File name: S:\DWG\05\0504\dwg\Strref Plans.dwg
 Plot date: 03/30/07 at 12:00 P.M. 555,584