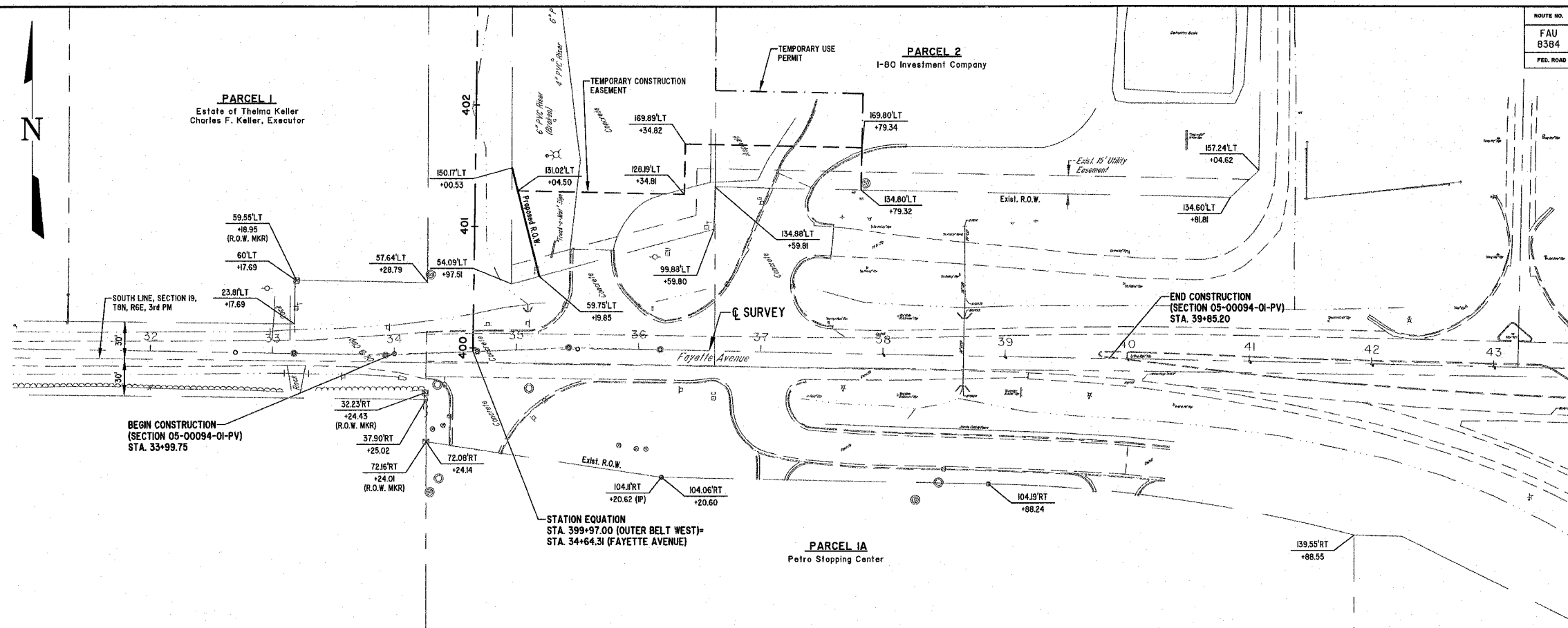


ROUTE NO.	SECTION	COUNTY	TOTAL SHEETS	SHEET NO.
FAU 8384	#	EFFINGHAM	95	28
FED. ROAD DIST. NO. 7	ILLINOIS	FED. AID PROJECT- HPP-4080041		

* SECTION 05-00094-01-PV
SECTION 03-00098-00-BR
CONTRACT #95503



FAYETTE AVENUE SURVEY CENTERLINE
CURVE #1
PI STA=33+92.69
Delta=3°32'50"
D=02°14'36"
T=75.00'
R=2554.16'
L=449.95'
C=449.93'
E=110'
M=110'
PC STA=33+47.69
PRC STA=34+67.65

CURVE #2
PI STA=35+42.65
Delta=3°32'50"
D=02°14'36"
T=75.00'
R=2427.78'
L=449.95'
C=449.93'
E=116'
M=116'
PC STA=34+67.65
PT STA=36+17.60

BEGIN CONSTRUCTION
(SECTION 05-00094-01-PV)
STA. 33+99.75

STATION EQUATION
STA. 399+97.00 (OUTER BELT WEST)=
STA. 34+64.31 (FAYETTE AVENUE)

END CONSTRUCTION
(SECTION 05-00094-01-PV)
STA. 39+85.20

MILANO & GRUNLOH ENGINEERS, LLC
14 WEST WASHINGTON
P.O. BOX 897
EFFINGHAM, ILLINOIS 62401
PHONE: (217) 847-7262
(800) 677-2714
FAX #: (217) 842-3433

RIGHT OF WAY PLAN
FAYETTE AVENUE
STA. 32+00 TO STA 42+00
CITY OF EFFINGHAM, ILLINOIS

File name: S:\DWG\05\050041\05\ROW Plan.dwg
Plot date: 03/30/07 at 12:00
FR 555,584