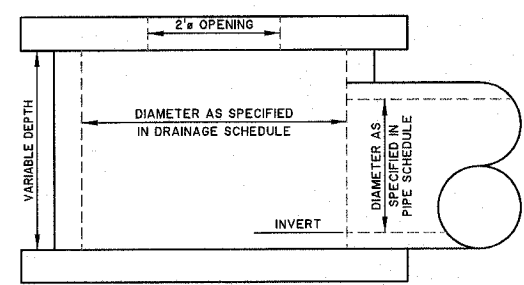
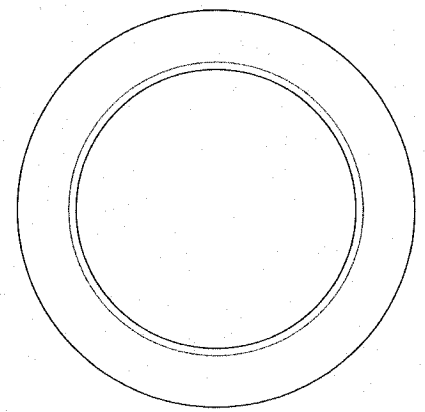


ROUTE NO.	SECTION	COUNTY	TOTAL SHEETS	SHEET NO.
FAU 6384	*	EFFINGHAM	95	36
FED. ROAD DIST. NO. 7	ILLINOIS	FED. AID PROJECT - IHP-409(04)		

* SECTION 05-0094-01-PV
SECTION 03-0098-00-BR
CONTRACT #95503

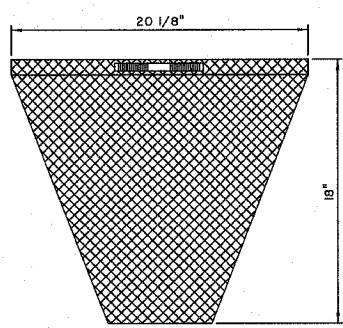


DETAIL OF RESTRICTED DEPTH MANHOLE

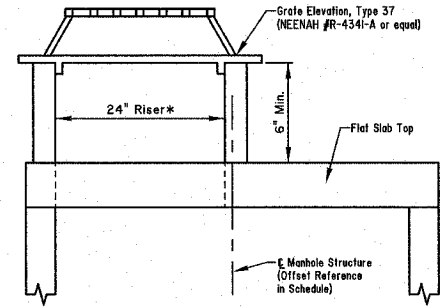


INLET PROTECTION FILTER

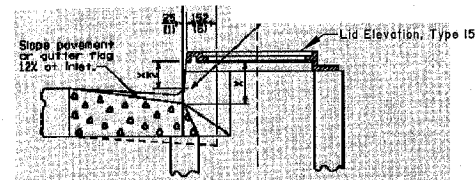
GENERAL NOTES:
FRAME: Top flange fabricated from 1/2" flat stock. Base rim fabricated from 1 1/2" x 1/2" x 1/8" channel. All domestic steel conforming to ASTM-A36.
SEDIMENT BAG: Bag fabricated from 4 oz./sq.yd. non-woven polypropylene geotextile reinforced with polyester mesh. Bag secured to base rim with a stainless steel strap and lock.



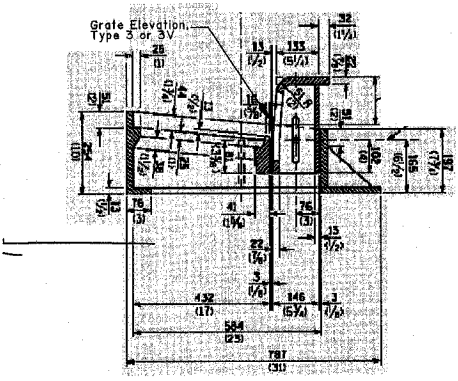
TYPE 37 GRATE



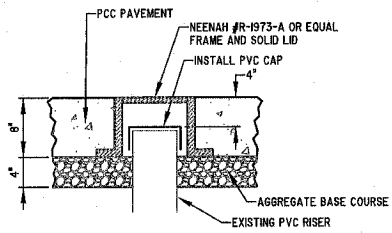
* Included in the price of the Manhole structure



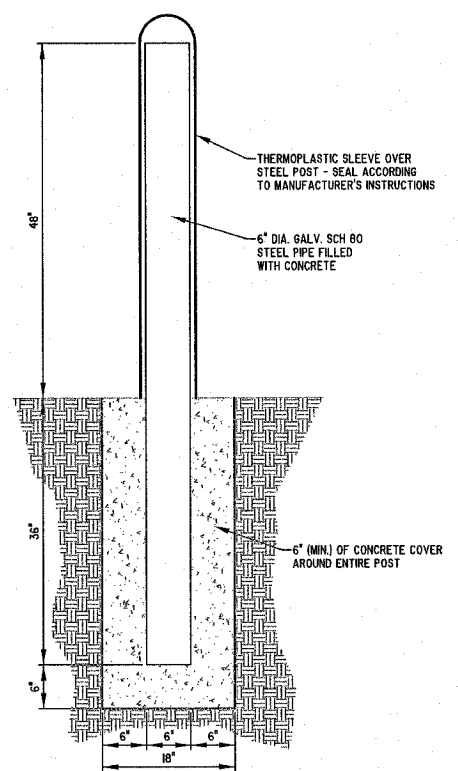
TYPE 15 FRAME & LID



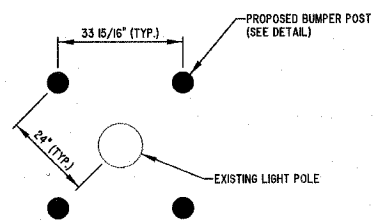
TYPE 3 or 3V GRATE



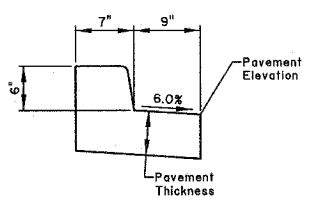
ACCESS COVER DETAIL



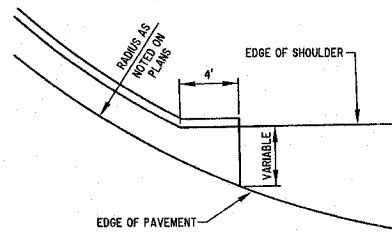
BUMPER POST DETAIL



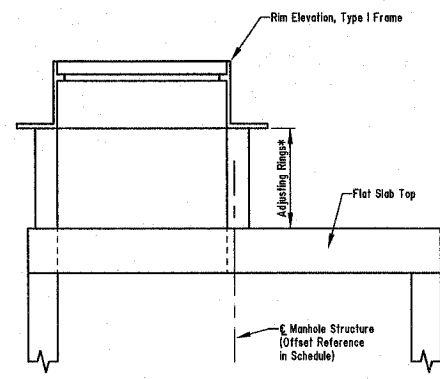
BUMPER POST LAYOUT



COMBINATION CONCRETE CURB AND GUTTER, TYPE B (SPECIAL)
SCALE: 1"=1'



CONCRETE CURB AND GUTTER TRANSITION DETAIL



* Included in the price of the Manhole structure

TYPE 1 FRAME & LID

MILANO & GRUNLOH ENGINEERS, LLC
14 WEST WASHINGTON
P.O. BOX 897
EFFINGHAM, ILLINOIS 62401
PHONE: (217) 347-7282
(800) 677-2714
FAX #: (217) 342-3433
File name: S:\DWG\05\05014\Jwg_Details.dwg
Plot date: 03/30/07 at 12:00

MISCELLANEOUS DETAILS
OUTER BELT WEST
CITY OF EFFINGHAM, ILLINOIS