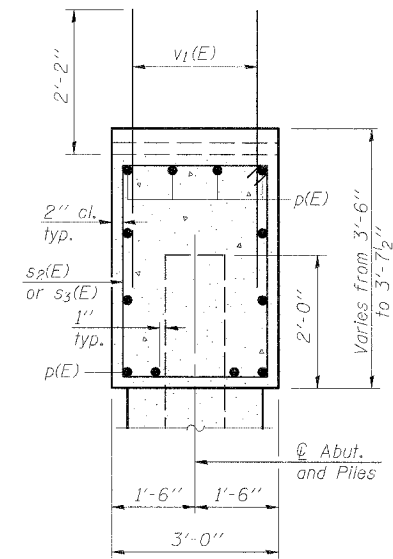
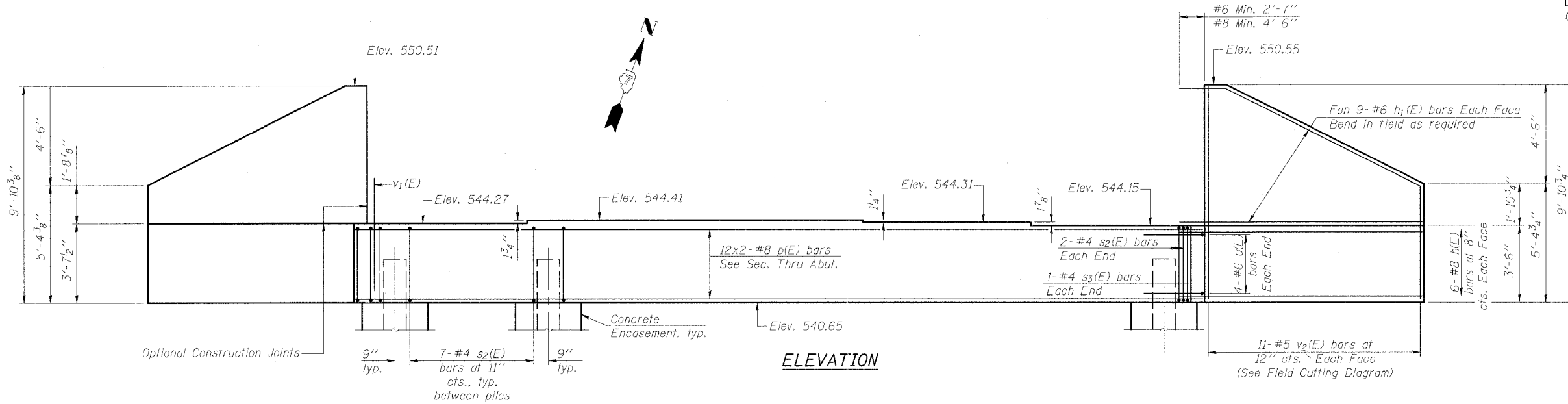
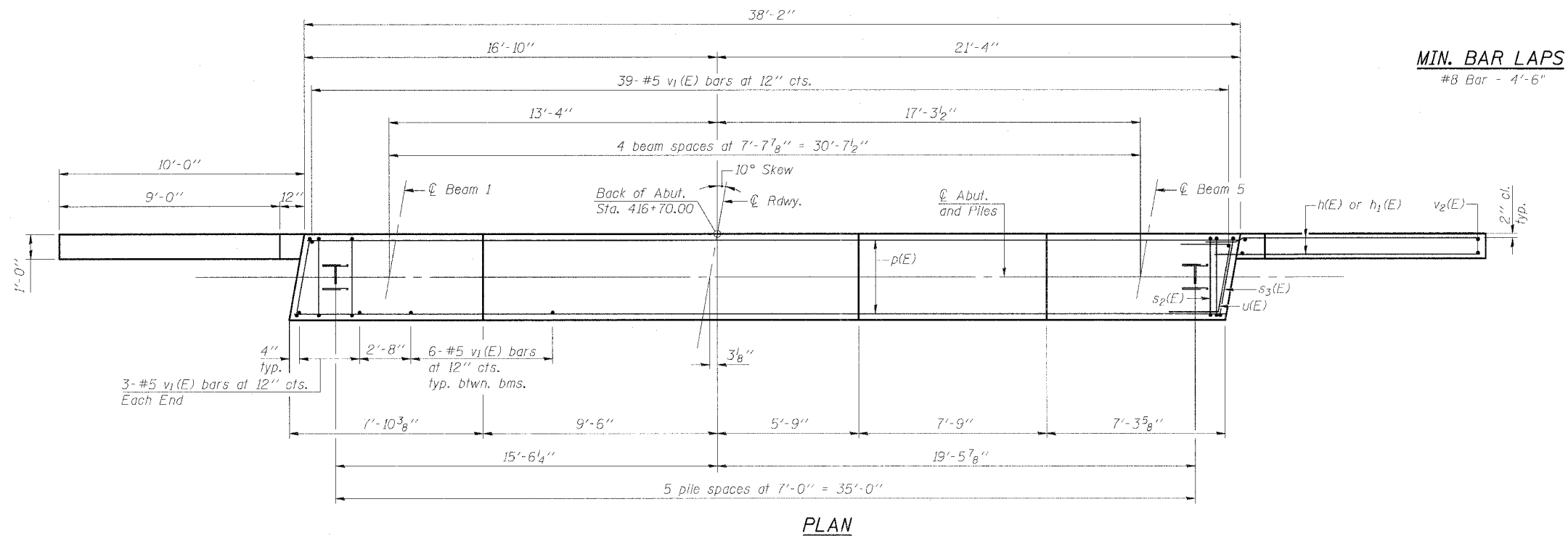


Notes: Four steps monolithically with cap.

ROUTE NO.	SECTION	COUNTY	SHEET NO.	SHEET NO. 17
	*	EFFINGHAM	95	55
FED. ROAD DIST. NO. 7	ILLINOIS	FED. AID PROJECT-		23 SHEETS
Contract #95503			* 03-00098-00-BR	



SEC. THRU ABUT.



MIN. BAR LAPS
#8 Bar - 4'-6"

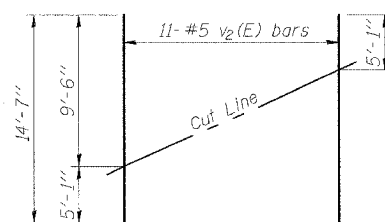
BILL OF MATERIAL

Bar	No.	Size	Length	Shape
h(E)	24	#8	14'-4"	—
h1(E)	36	#6	13'-6"	—
p(E)	16	#8	21'-2"	—
s2(E)	32	#4	12'-5"	□
s3(E)	2	#4	12'-6"	□
u(E)	8	#6	7'-10"	—
v1(E)	69	#5	4'-4"	—
v2(E)	22	#5	14'-7"	—
Structure Excavation		Cu. Yd.	170	
Concrete Structures		Cu. Yd.	21.3	
Reinforcement Bars, Epoxy Coated		Pound	3580	
Furnishing Steel Piles, HP12x74		Foot	340	
Driving Steel Piles		Foot	340	
Test Pile, HP12x74		Each	1	
Concrete Encasement		Cu. Yd.	2.10	

For details of piles and Concrete Encasement, see sheet 19 of 23.

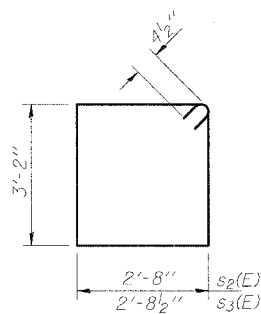
PILE DATA

Type: HP12x74
 Nominal Required Bearing: 589 kips
 Allowable Resistance Available: 196 kips
 Est. Length: 68 ft.
 No. Production Piles: 5
 No. Test Piles: 1

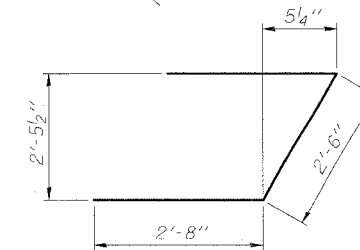


FIELD CUTTING DIAGRAM

Order v2(E) full length. Cut as shown and use remainder of bars in opposite face.



BARS s2(E) & s3(E)



BAR u(E)

NORTH ABUTMENT
 OUTER BELT WEST OVER TRIBUTARY
 TO LITTLE WABASH RIVER
 LOCAL ROAD SEC. 03-00098-00-BR
 EFFINGHAM COUNTY
 STATION 415+66.00
 STRUCTURE NO. 025-6009

© Copyright Hanson Professional Services Inc. 2007



0552071
 DATE
 03/29/07

03/29/2007 03:35 AM
 I:\05\Jobs\0552071\CAD\Struct\Model\FinalPlan.dgn
 LAYOUT MM 12/20/07
 DRAWN DDP 07/22/07
 REVIEWED JUT 07/15/07