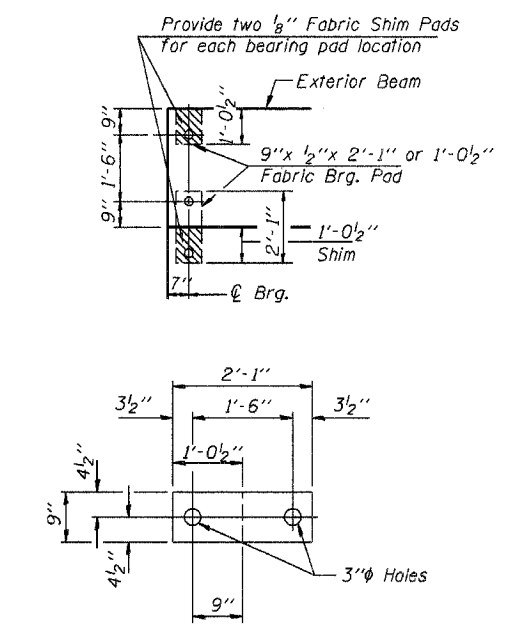
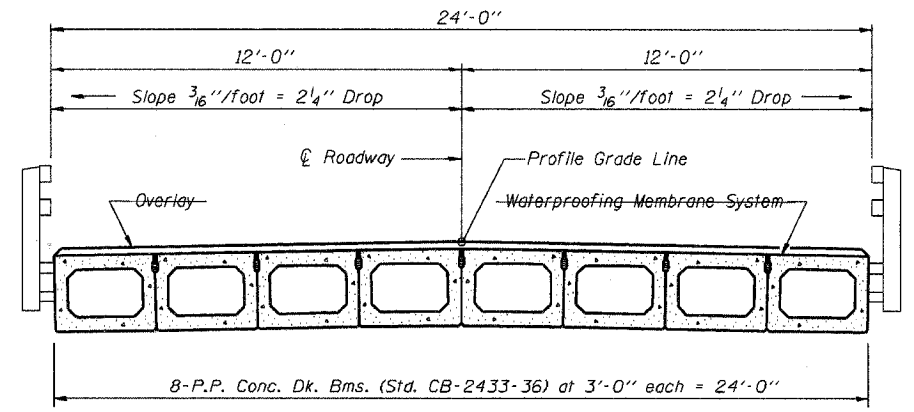


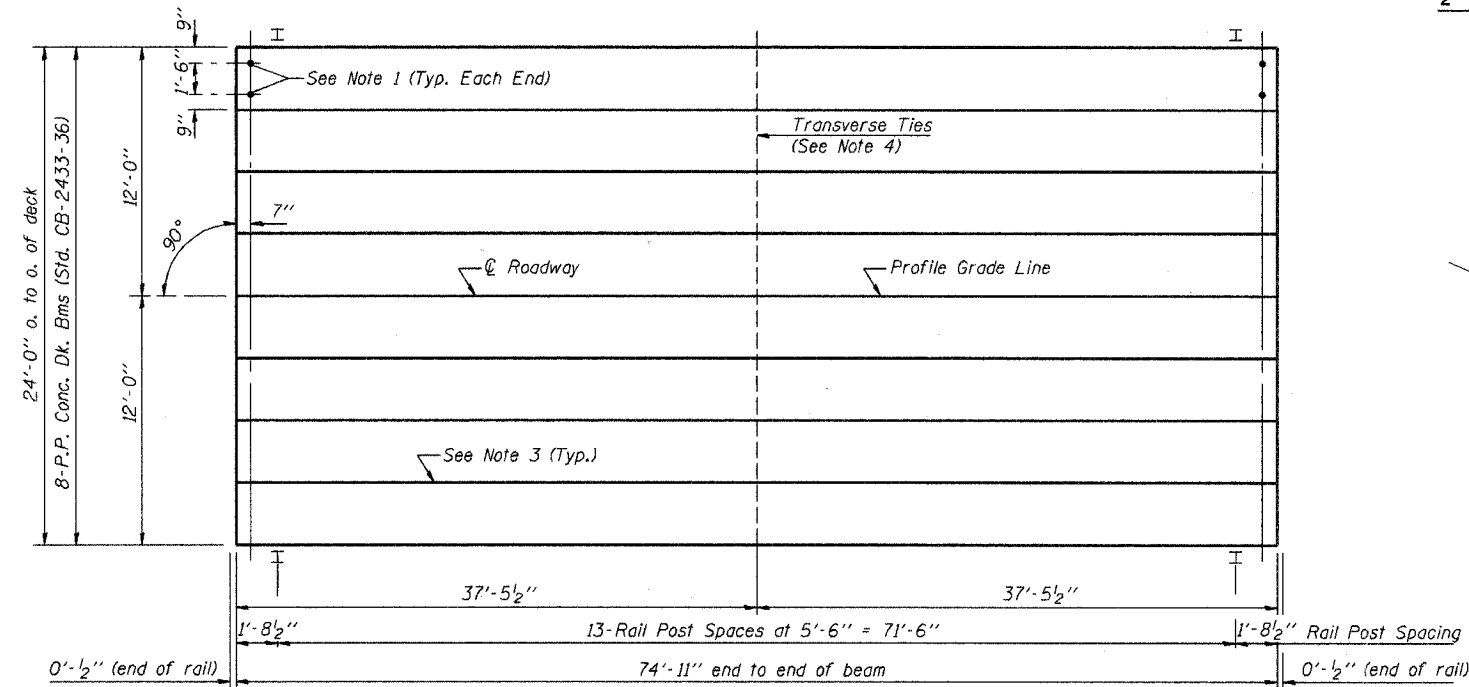
TYPICAL ELEVATIONS



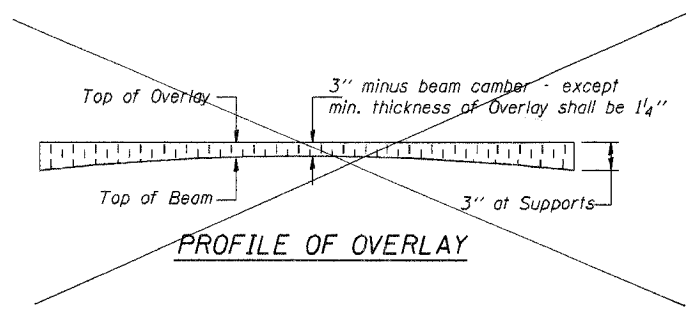
1/2" FABRIC BRG. PAD DETAILS



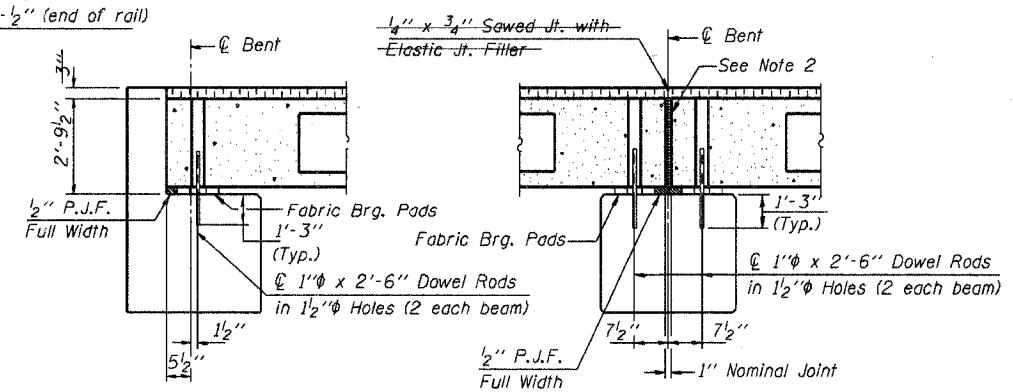
CROSS SECTION



PLAN



PROFILE OF OVERLAY



SECTION AT ABUTS.
(Along centerline Beams)

SECTION AT PIERS
(Along centerline Beams)

NOTES

1. After beams have been erected, holes shall be drilled into substructure and anchor dowels placed. Dowel holes shall be filled with non-shrink grout to top of beam and allowed to cure min. 24 hrs. prior to grouting the shear keys.
2. Nominal 1" joint at centerline Pier shall be filled with non-shrink grout.
3. Longitudinal keys shall be grouted. WITH NON-SHRINK GROUT.
4. The 1" rods in the transverse tie assembly shall be tightened to a snug fit and the threads set. Pockets that receive transverse tie bar outside shall be filled with grout after transverse tie assembly is in place.

QUANTITIES FOR ONE SPAN

P.P. Conc. Dk. Bm. 33" Dp.	1800 Sq. Ft.
Steel Railing	150 Ft.
Waterproofing Membrane System	200.0 Sq. Yds
Portland Cement Mortar	525 Ft.
Fairing Course	

Note: Quantity of overlay for one span = 23.0 Tons

P.P.C. DECK BEAM SUPERSTRUCTURE			
24' RDWY.	33" BMS.	75' SPAN	0° SKEW
STANDARD CS-2433-75			

Illinois Department of Transportation
 PASSED APRIL 4, 2005
 Theresa S. Romagnolo
 Engineer of Bridge Design
 APPROVED APRIL 4, 2005
 Ralph E. Anderson
 Engineer of Bridges and Structures