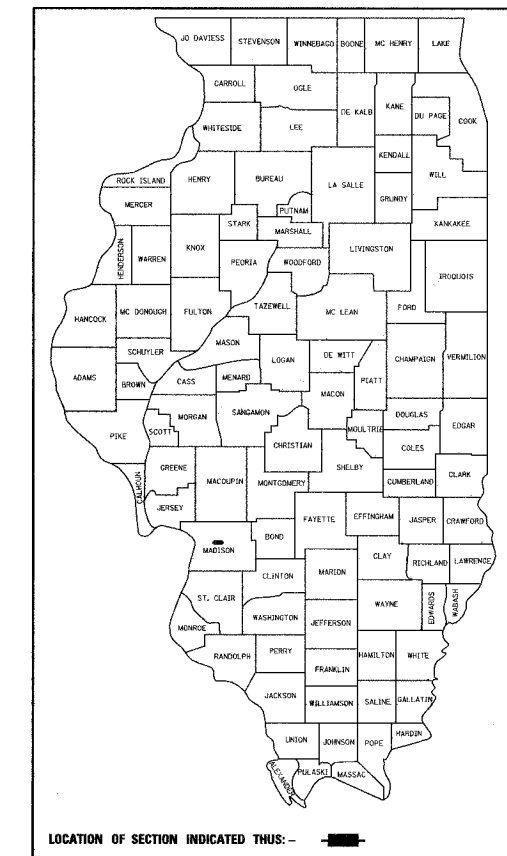


INDEX OF SHEETS

SHEET NUMBER	DESCRIPTION
1	COVER SHEET
2	GENERAL NOTES AND LEGEND
3	SUMMARY OF QUANTITIES
4-5	TYPICAL SECTIONS - EXISTING
6-9	TYPICAL SECTIONS - PROPOSED
10-12	QUANTITY SCHEDULES
13-15	MAINTENANCE OF TRAFFIC - ADVANCED WARNING SIGNS & STAGES OF CONSTRUCTION
16-18	PLAN AND PROFILE SHEETS
19-21	DRAINAGE PLAN AND PROFILE SHEETS
22	INTERSECTION GEOMETRIC DETAIL SHEETS
23-24	PAVEMENT MARKING SHEETS
25	REMOVAL SHEETS
26-29	TRAFFIC SIGNAL SHEETS
30-31	MISCELLANEOUS DETAIL SHEETS
32-39	CROSS SECTIONS

**STATE OF ILLINOIS**  
**DEPARTMENT OF TRANSPORTATION**  
**DIVISION OF HIGHWAYS**  
**GOSHEN ROAD &**  
**OLD TROY ROAD INTERSECTION**  
**IMPROVEMENTS**  
**EDWARDSVILLE, ILLINOIS**  
**F.A.U. ROUTE 8883 & 8873**  
**EDWARDSVILLE SECTION NO. 05-00090-01-TL**  
**PROJECT NO. CMM-5011 (213)**  
**C-98-350-06**

F.A.U. RTE.	SECTION	COUNTY	TOTAL SHEETS	SHEET NO.
8883	05-00090-01-TL	MADISON	39	1
FED. ROAD DIST. NO.	ILLINOIS FED. AID PROJECT			
CONTRACT NO. 97813				

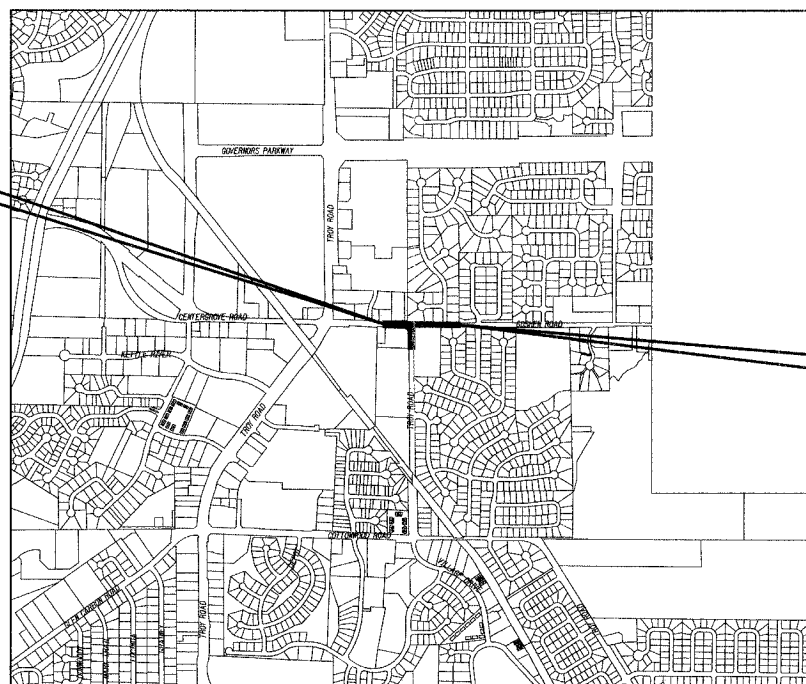


STANDARDS

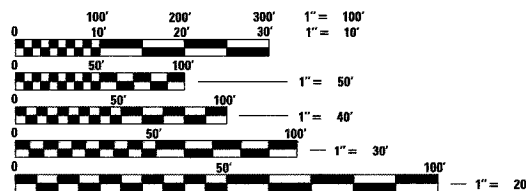
000001-04	602701-01	780001-01
280001-03	604001-02	805001
420001-06	604006-02	814001-01
420111-01	604086-01	814006-01
420601-04	606001-03	857001
420701-01	701606-04	877001-02
424001-04	701701-04	878001-05
542401	701801-03	880006
602301-01	702001-06	886001
602401-01	720001	886006
602601-01	720016-01	873001-01

PLAN 1" = 20'  
 PROFILE HORIZ. 1" = 20'  
 PROFILE VERT. 1" = 5'  
 CROSS SECTIONS 1" = 10' HORIZ.  
 1" = 5' VERT.

**BEGIN PROJECT**  
**STATION 102 + 71.29**



**END PROJECT**  
**STATION 114 + 11.72**



FULL SIZE PLANS HAVE BEEN PREPARED USING STANDARD ENGINEERING SCALES, REDUCED SIZED PLANS WILL NOT CONFORM TO STANDARD SCALES, IN MAKING MEASUREMENTS ON REDUCED PLANS, THE ABOVE SCALES MAY BE USED.

J.U.L.I.E.  
JOINT UTILITY LOCATION INFORMATION FOR EXCAVATION  
1-800-892-0123

**DESIGN DESIGNATION**  
FUNCTIONAL CLASSIFICATION: MINOR ARTERIAL  
ADT: 11,160 (2007) 16,570 (2027)  
DHV: 1657 (2027)  
DESIGN SPEED: 35 MPH

LOCATION MAP  
SCALE: 1" = 600'  
NET LENGTH OF PROJECT: 1140.4 FEET - 0.22 MILES  
SECTION 23 & 24, T. 4 N., R. 8 W., 3RD P.M.



Expires 11-30-07

*Brian F. Kulick* 5/18/07  
BRIAN F. KULICK, P.E. No. 49936 DATE  
(Printed by Authority of the State of Illinois)  
Job No. E063800

ILLINOIS DEPARTMENT OF TRANSPORTATION

Approved: *[Signature]* 5-18-07  
City of Edwardsville, Mayor

Passed: 5/24/07  
District 8 Engineer of Local Roads & Streets

Releasing for Bid Based on Limited Review: 5/24/07  
*Wm C Lewis, Jr.*  
Deputy Director of Highways, Region 5 Engineer

**Juneau Associates, Inc. P.C.**  
CONSULTING ENGINEERS AND LAND SURVEYORS  
2100 State Street, P.O. Box 1325  
Edwardsville, Illinois 62040  
Phone: (618) 859-1400 / (618) 452-5535  
Fax: (618) 452-5541