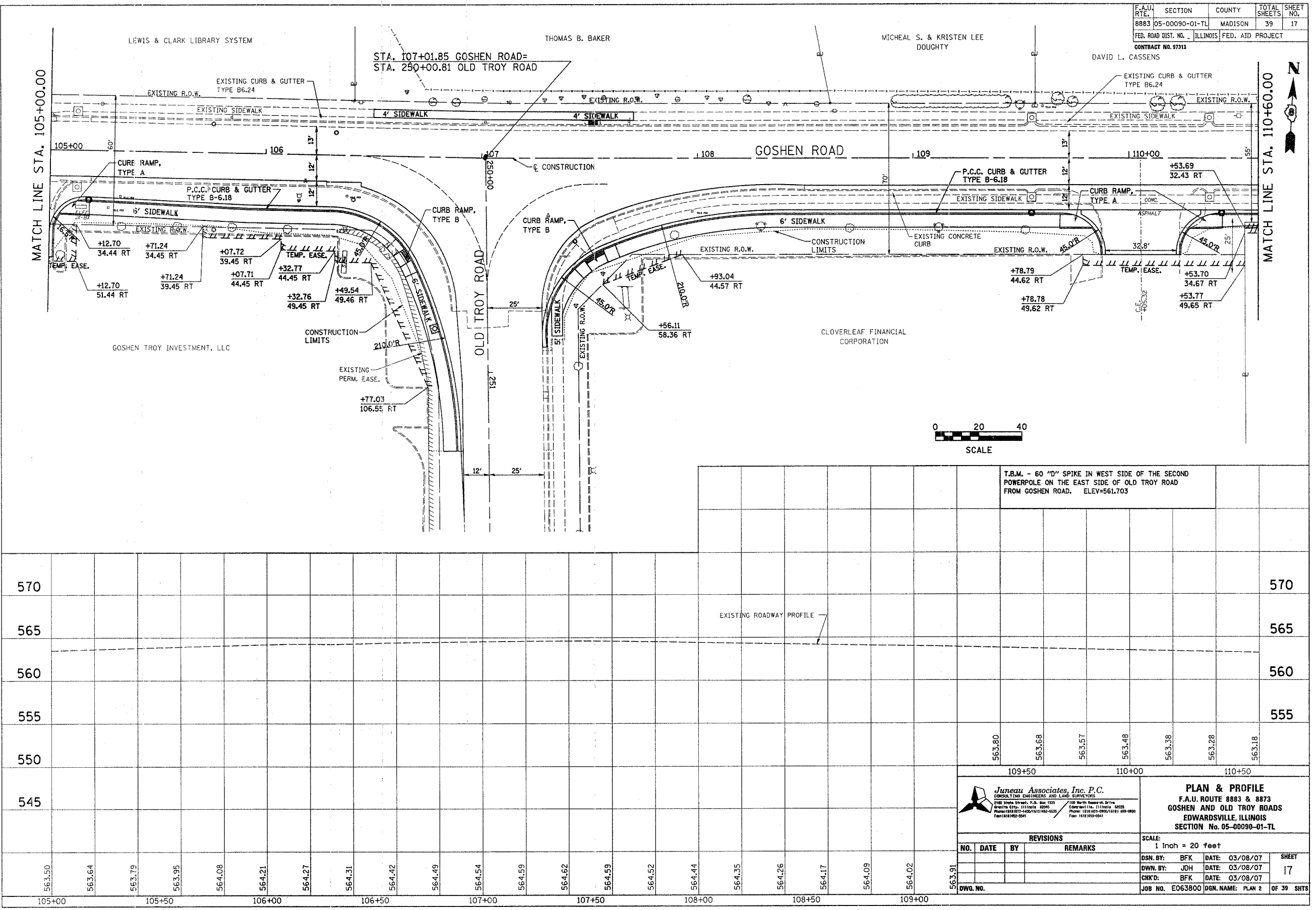


F.A.U. RTE.	SECTION	COUNTY	TOTAL SHEETS	SHEET NO.
8883	05-00090-01-TL	MADISON	39	17
FED. ROAD DIST. NO.	ILLINOIS		FED. AID PROJECT	
CONTRACT NO. 97313				

DATE	BY
FINAL SURVEY PLOTTED	
NOTE BOOK TEMPLATE	
AREAS CHECKED	
NO.	

DATE	BY
ORIGINAL SURVEY PLOTTED	
NOTE BOOK TEMPLATE	
AREAS CHECKED	
NO.	



T.B.M. - 60 "D" SPIKE IN WEST SIDE OF THE SECOND POWERPOLE ON THE EAST SIDE OF OLD TROY ROAD FROM GOSHEN ROAD. ELEV=561.703

EXISTING ROADWAY PROFILE