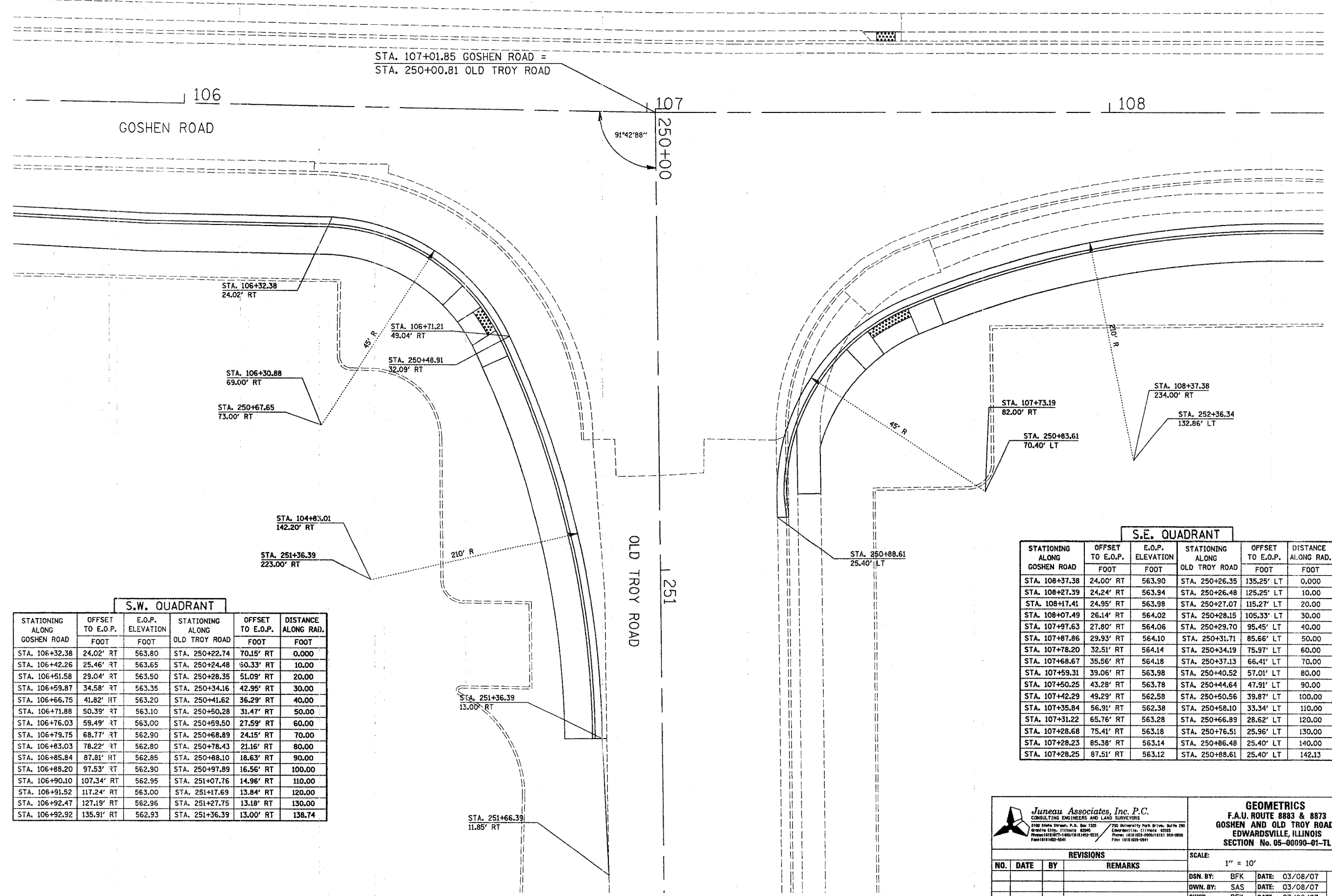


DATE _____ BY _____
 ORIGINAL SURVEYED SURVEY PLOTTED NOTE BOOK TEMPLATE AREAS CHECKED NO. _____

DATE _____ BY _____
 ORIGINAL SURVEYED SURVEY PLOTTED NOTE BOOK TEMPLATE AREAS CHECKED NO. _____



S.W. QUADRANT					
STATIONING ALONG GOSHEN ROAD	OFFSET TO E.O.P. FOOT	E.O.P. ELEVATION FOOT	STATIONING ALONG OLD TROY ROAD	OFFSET TO E.O.P. FOOT	DISTANCE ALONG RAD. FOOT
STA. 106+32.38	24.02' RT	563.80	STA. 250+22.74	70.15' RT	0.000
STA. 106+42.26	25.46' RT	563.65	STA. 250+24.48	60.33' RT	10.00
STA. 106+51.58	29.04' RT	563.50	STA. 250+28.35	51.09' RT	20.00
STA. 106+59.87	34.58' RT	563.35	STA. 250+34.16	42.95' RT	30.00
STA. 106+66.75	41.82' RT	563.20	STA. 250+41.62	36.29' RT	40.00
STA. 106+71.88	50.39' RT	563.10	STA. 250+50.28	31.47' RT	50.00
STA. 106+76.03	59.49' RT	563.00	STA. 250+59.50	27.59' RT	60.00
STA. 106+79.75	68.77' RT	562.90	STA. 250+68.89	24.15' RT	70.00
STA. 106+83.03	78.22' RT	562.80	STA. 250+78.43	21.16' RT	80.00
STA. 106+85.84	87.81' RT	562.85	STA. 250+88.10	18.63' RT	90.00
STA. 106+88.20	97.53' RT	562.90	STA. 250+97.89	16.56' RT	100.00
STA. 106+90.10	107.34' RT	562.95	STA. 251+07.76	14.96' RT	110.00
STA. 106+91.52	117.24' RT	563.00	STA. 251+17.69	13.84' RT	120.00
STA. 106+92.47	127.19' RT	562.96	STA. 251+27.75	13.18' RT	130.00
STA. 106+92.92	135.91' RT	562.93	STA. 251+36.39	13.00' RT	138.74

S.E. QUADRANT					
STATIONING ALONG GOSHEN ROAD	OFFSET TO E.O.P. FOOT	E.O.P. ELEVATION FOOT	STATIONING ALONG OLD TROY ROAD	OFFSET TO E.O.P. FOOT	DISTANCE ALONG RAD. FOOT
STA. 108+37.38	24.00' RT	563.90	STA. 250+26.35	135.25' LT	0.000
STA. 108+27.39	24.24' RT	563.94	STA. 250+26.48	125.25' LT	10.00
STA. 108+17.41	24.95' RT	563.98	STA. 250+27.07	115.27' LT	20.00
STA. 108+07.49	26.14' RT	564.02	STA. 250+28.15	105.33' LT	30.00
STA. 107+97.63	27.80' RT	564.06	STA. 250+29.70	95.45' LT	40.00
STA. 107+87.86	29.93' RT	564.10	STA. 250+31.71	85.66' LT	50.00
STA. 107+78.20	32.51' RT	564.14	STA. 250+34.19	75.97' LT	60.00
STA. 107+68.67	35.56' RT	564.18	STA. 250+37.13	66.41' LT	70.00
STA. 107+59.31	39.06' RT	563.98	STA. 250+40.52	57.01' LT	80.00
STA. 107+50.25	43.28' RT	563.78	STA. 250+44.64	47.91' LT	90.00
STA. 107+42.29	49.29' RT	562.58	STA. 250+50.56	39.87' LT	100.00
STA. 107+35.84	56.91' RT	562.38	STA. 250+58.10	33.34' LT	110.00
STA. 107+31.22	65.76' RT	563.28	STA. 250+66.89	28.62' LT	120.00
STA. 107+28.68	75.41' RT	563.18	STA. 250+76.51	25.96' LT	130.00
STA. 107+28.23	85.38' RT	563.14	STA. 250+86.48	25.40' LT	140.00
STA. 107+28.25	87.51' RT	563.12	STA. 250+88.61	25.40' LT	142.13

Juneau Associates, Inc. P.C.
 CONSULTING ENGINEERS AND LAND SURVEYORS
 2300 State Street, P.O. Box 1320
 Granite City, Illinois 62040
 Phone: (618) 887-5000 / (618) 887-5001
 Fax: (618) 887-5041

GEOMETRICS
 F.A.U. ROUTE 8883 & 8873
 GOSHEN AND OLD TROY ROADS
 EDWARDSVILLE, ILLINOIS
 SECTION No. 05-00090-01-TL

SCALE: 1" = 10'

NO.	DATE	BY	REVISIONS	REMARKS

DSN. BY: BFK DATE: 03/08/07
 DWN. BY: SAS DATE: 03/08/07
 CHK'D: BFK DATE: 03/08/07

DWG. NO. _____ JOB NO. E063800 DGN. NAME: GEO 01 OF 39 SHTS