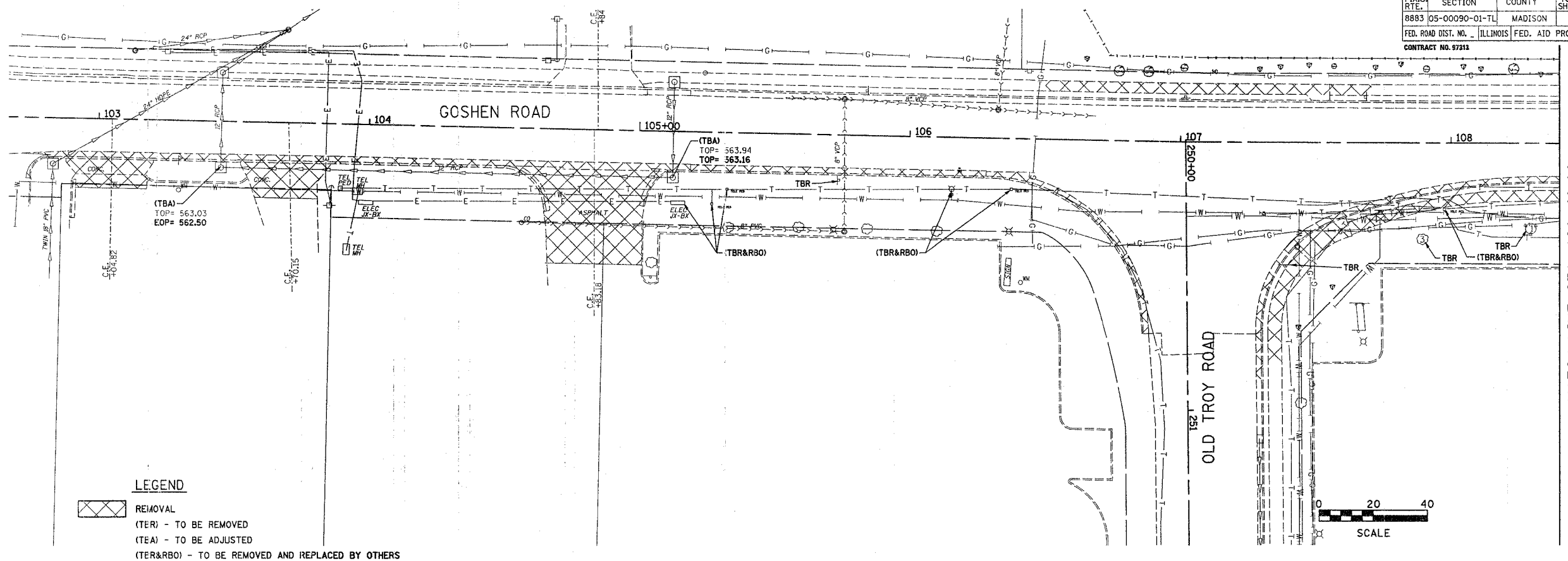


F.A.U. RTE.	SECTION	COUNTY	TOTAL SHEETS	SHEET NO.
8883	05-00090-01-TL	MADISON	39	25
FED. ROAD DIST. NO. ILLINOIS FED. AID PROJECT				
CONTRACT NO. 87813				

DATE	BY
FINAL SURVEY PLOTTED	
NOTE BOOK TEMPLATE	
AREAS CHECKED	
NO.	



LEGEND

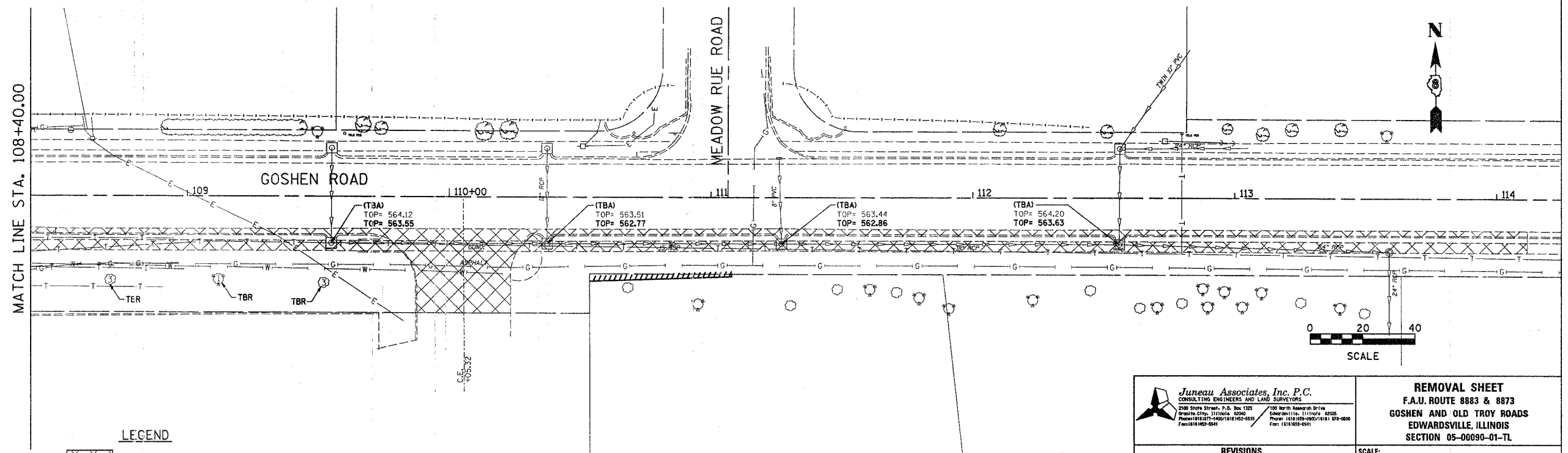
REMOVAL

(TER) - TO BE REMOVED

(TEA) - TO BE ADJUSTED

(TER&RBO) - TO BE REMOVED AND REPLACED BY OTHERS

DATE	BY
ORIGINAL SURVEY PLOTTED	
NOTE BOOK TEMPLATE	
AREAS CHECKED	
NO.	



LEGEND

REMOVAL

(TER) - TO BE REMOVED

(TEA) - TO BE ADJUSTED

(TER&RBO) - TO BE REMOVED AND REPLACED BY OTHERS

Juneau Associates, Inc. P.C.
 CONSULTING ENGINEERS AND LAND SURVEYORS
 200 North Street, S.E. Box 125
 Granite City, Illinois 62040
 Phone: (618) 277-4400 / (618) 277-4401
 Fax: (618) 277-4441

REMOVAL SHEET
 F.A.U. ROUTE 8883 & 8873
 GOSHEN AND OLD TROY ROADS
 EDWARDSVILLE, ILLINOIS
 SECTION 05-00090-01-TL

REVISIONS			
NO.	DATE	BY	REMARKS

SCALE: 1 inch = 20 feet		
DSN. BY: SAS	DATE: 03/08/07	SHEET 25 OF 39 SHEETS
DWN. BY: DAN	DATE: 03/08/07	
CHK'D: BFK	DATE: 03/08/07	
DWG. NO.	JOB NO. E063800	DGN. NAME: rem