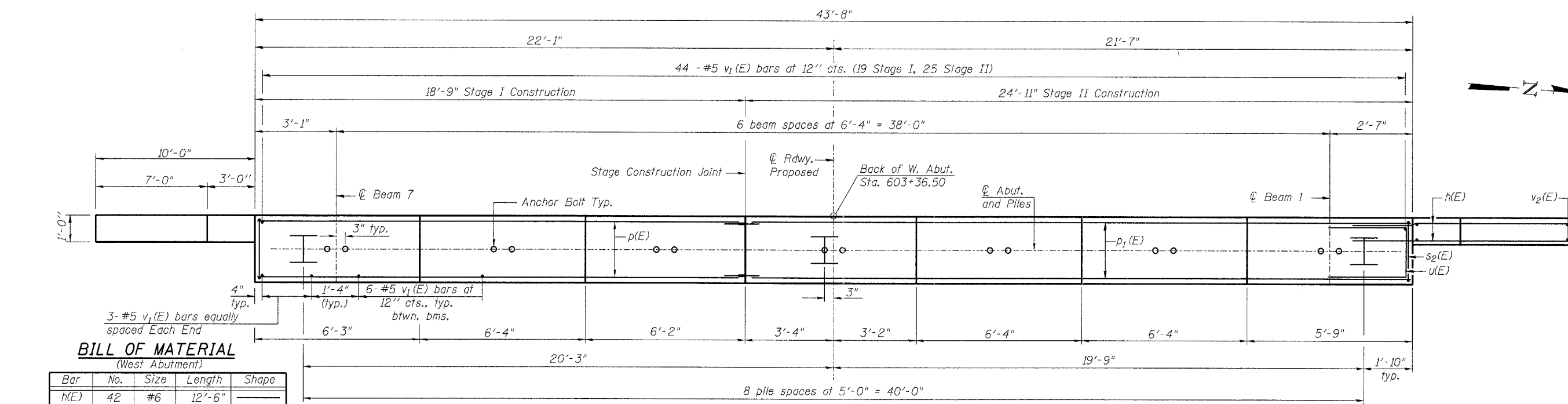


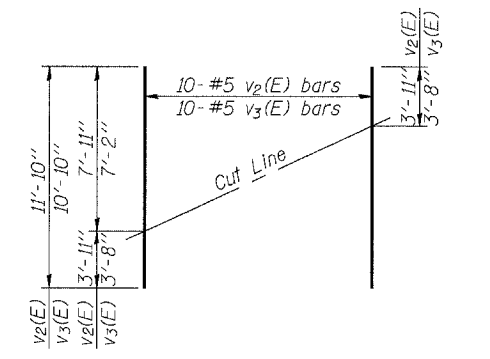
ELEVATION
(Looking West)



PLAN

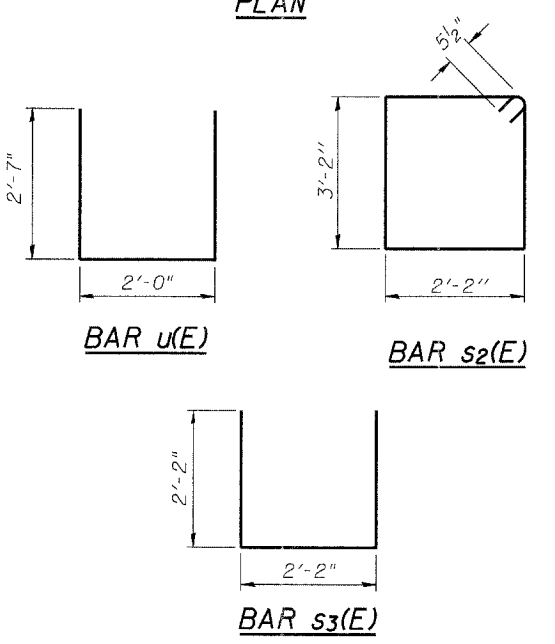
BILL OF MATERIAL
(West Abutment)

Bar	No.	Size	Length	Shape
h(E)	42	#6	12'-6"	—
p(E)	14	#7	18'-5"	—
p ₁ (E)	10	#7	24'-7"	—
p ₂ (E)	4	#7	6'-2"	—
s ₂ (E)	40	#5	11'-7"	□
s ₃ (E)	26	#5	6'-6"	□
u(E)	8	#6	7'-2"	□
v ₁ (E)	86	#5	4'-4"	—
v ₂ (E)	10	#5	11'-10"	—
v ₃ (E)	10	#5	10'-0"	—
Structure Excavation	Cu. Yd.		98	
Concrete Structures	Cu. Yd.		20.5	
Reinforcement Bars, Epoxy Coated	Pound		3230	
Furnishing Steel	Foot		416	
Piles, HP 12x53	Foot		416	
Driving Piles	Foot		416	
Test Pile, Steel HP 12x53	Each		1	
Concrete Encasement	Cu. Yd.		3.0	
Anchor Bolts 1" φ	Each		14	



FIELD CUTTING DIAGRAM

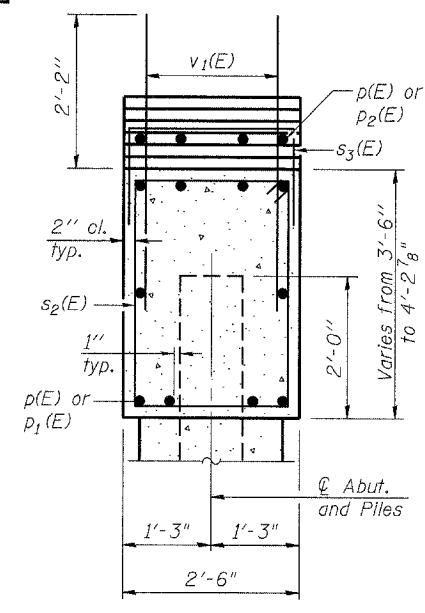
Order v₂(E) and v₃(E) full length. Cut as shown and use remainder of bars in opposite face.



Notes:
Excavation behind existing abutment walls shall be performed to balance front and back soil pressure before removing the existing superstructure. The Contractor shall sawcut the upper portion of the existing abutment at the stage removal line before Stage I removal to ensure the remaining portion will not be prematurely damaged.
Four steps monolithically with cap.
Space reinforcement in cap to miss Anchor Bolts.

PILE DATA

Type: HP 12x53
Nominal Required Bearing: 404 Kips
Factored Resistance Available: 202 Kips
Est. Length: 52 ft
No. Production Piles: 8
No. Test Piles: 1



SEC. THRU ABUT.

REVISIONS	
NAME	DATE

Lin Engineering, Ltd.
Consulting Engineers
Chatham, Illinois

ILLINOIS DEPARTMENT OF TRANSPORTATION
WEST ABUTMENT
ILLINOIS ROUTE 14 OVER
ANDY CREEK
F.A.P. ROUTE 869 - SECTION 104B-2
FRANKLIN COUNTY
STATION 603+80.00
STRUCTURE NO. 028-0076

E:\0602\Plans\028-0076.dgn 2:59:48 PM 5/7/2007