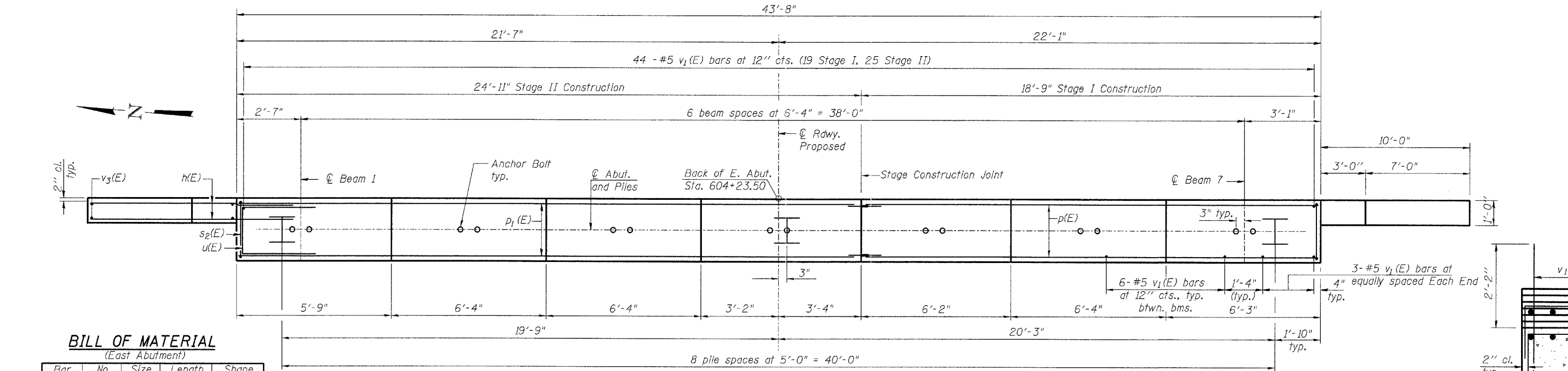


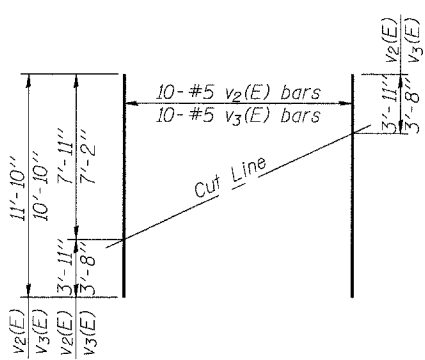
**ELEVATION**  
(Looking East)



**PLAN**

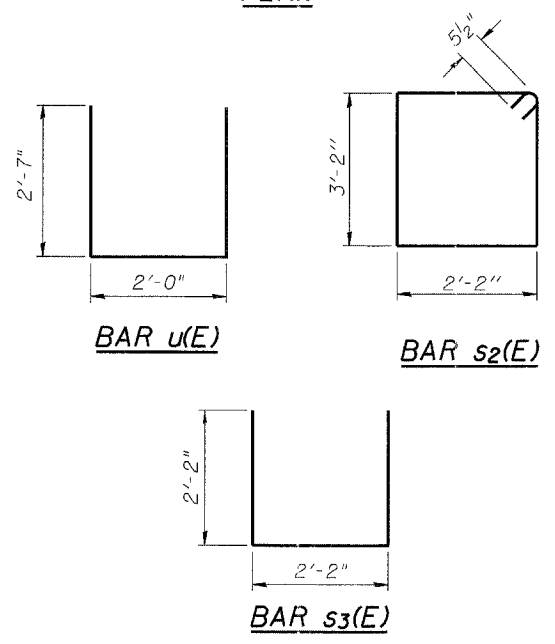
**BILL OF MATERIAL**  
(East Abutment)

Bar	No.	Size	Length	Shape
h(E)	42	#6	12'-6"	
p(E)	14	#7	18'-5"	
p1(E)	10	#7	24'-7"	
s2(E)	40	#5	11'-7"	
s3(E)	19	#5	6'-6"	
u(E)	8	#6	7'-2"	
v1(E)	86	#5	4'-4"	
v2(E)	10	#5	11'-10"	
v3(E)	10	#5	10'-0"	
Structure Excavation	Cu. Yd.		96	
Concrete Structures	Cu. Yd.		20.2	
Reinforcement Bars, Epoxy Coated	Pound		3130	
Furnishing Steel Piles, HP 12x53	Foot		440	
Driving Piles	Foot		440	
Test Pile, Steel HP 12x53	Each		1	
Concrete Encasement	Cu. Yd.		3.0	
Anchor Bolts 1" φ	Each		14	



**FIELD CUTTING DIAGRAM**

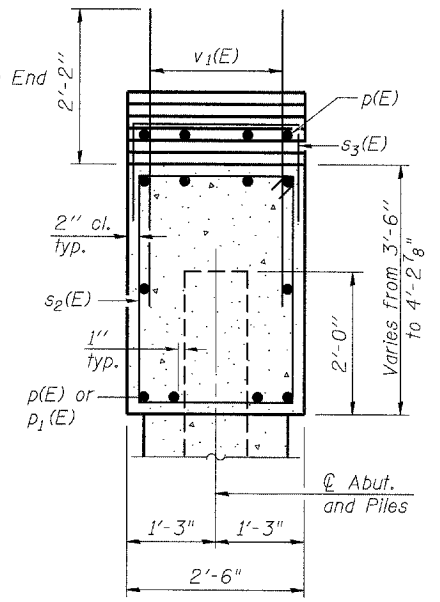
Order v2(E) and v3(E) full length. Cut as shown and use remainder of bars in opposite face.



**Notes:**  
Excavation behind existing abutment walls shall be performed to balance front and back soil pressure before removing the existing superstructure. The Contractor shall sawcut the upper portion of the existing abutment at the stage removal line before Stage I removal to ensure the remaining portion will not be prematurely damaged.  
Pour steps monolithically with cap.  
Space reinforcement in cap to miss Anchor Bolts.

**PILE DATA**

Type: HP 12x53  
Nominal Required Bearing: 400 Kips  
Factored Resistance Available: 200 Kips  
Est. Length: 55 ft  
No. Production Piles: 8  
No. Test Piles: 1



**SEC. THRU ABUT.**

For details of Bar Splicers, see sheet 13 of 16.  
For details of piles and Concrete Encasement, see sheet 14 of 16.

**LIN ENGINEERING, LTD.**  
Consulting Engineers  
Chattam, Illinois

Designed By: JST  
Checked By: MTH  
Date: 12/06

Drawn By: AUF  
File: 028-0076.DGN

REVISIONS	
NAME	DATE

ILLINOIS DEPARTMENT OF TRANSPORTATION  
**EAST ABUTMENT**  
ILLINOIS ROUTE 14 OVER  
ANDY CREEK  
F.A.P. ROUTE 869 - SECTION 104B-2  
FRANKLIN COUNTY  
STATION 603+80.00  
STRUCTURE NO. 028-0076