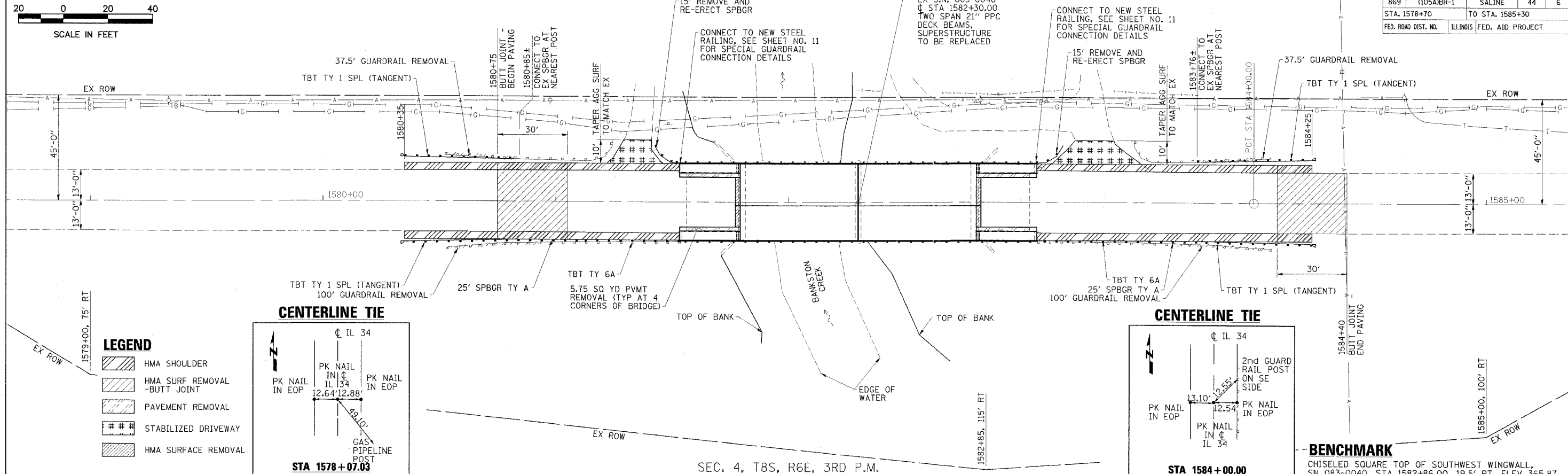
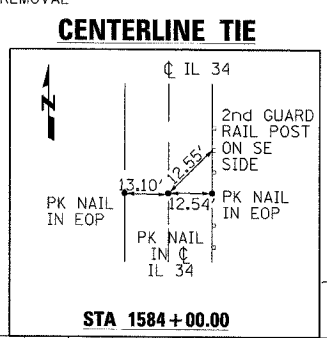
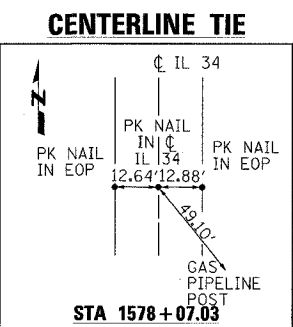


CONTRACT NO. 98996				
FAP RTE	SECTION	COUNTY	TOTAL SHEETS	SHEET NO.
869	(105A)BR-1	SALINE	44	6
STA. 1578+70		TO STA. 1585+30		
ILLINOIS		FED. AID PROJECT		

SEC. 3, T8S, R6E, 3RD P.M.

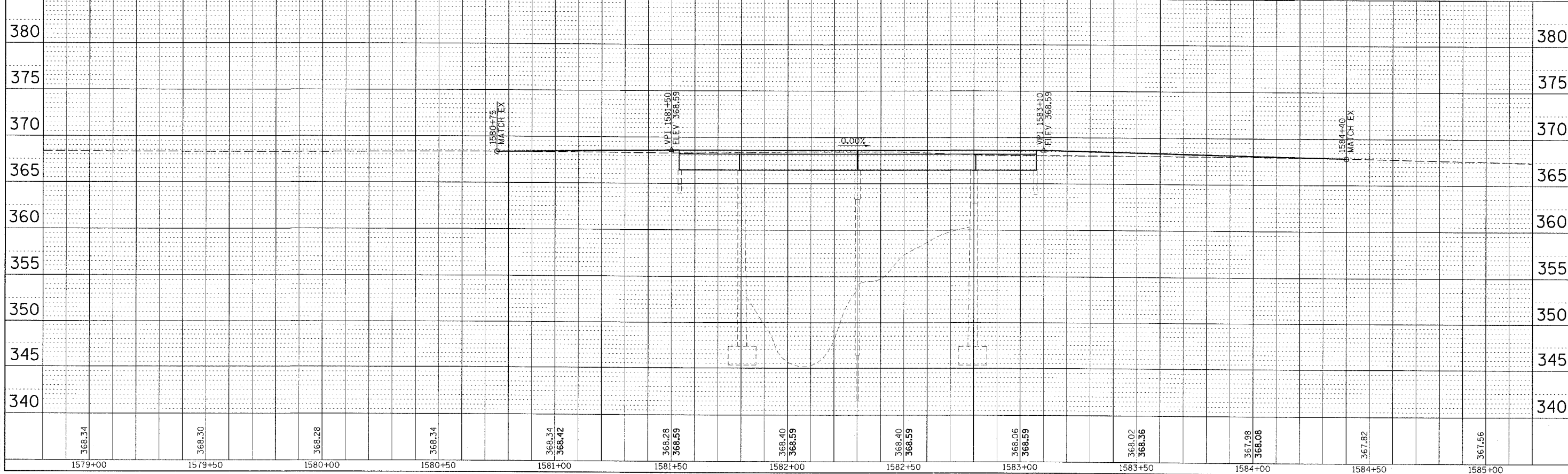


- LEGEND**
- HMA SHOULDER
 - HMA SURF REMOVAL - BUTT JOINT
 - PAVEMENT REMOVAL
 - STABILIZED DRIVEWAY
 - HMA SURFACE REMOVAL



BENCHMARK
CHISELED SQUARE TOP OF SOUTHWEST WINGWALL, SN 083-0040, STA 1582+86.00, 19.5' RT, ELEV 365.87

SEC. 4, T8S, R6E, 3RD P.M.



PLAN

DATE	BY

NO. _____

PROFILE

DATE	BY

NO. _____

PLOT DATE = #DATE#
FILE NAME = #FILE#
PLOT SCALE = #SCALE#
REFERENCE = #REF#