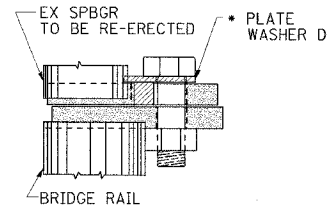


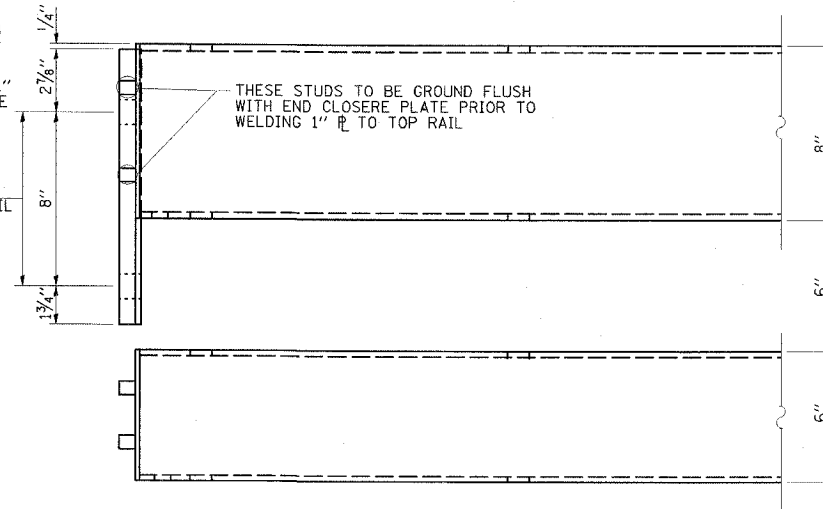
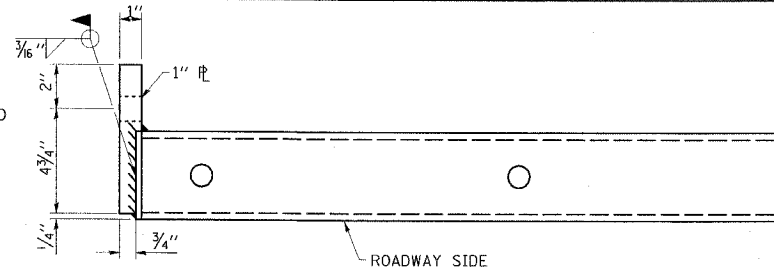
PLATE WASHER D



PLACEMENT OF PLATE WASHER D (PLAN)

* INSTALL PLATE WASHER D SO THAT THE 1" PROJECTION FILLS THE REMAINDER OF THE SLOTTED HOLES IN THE 1" END PLATE AFTER THE 1" DIA. BOLTS ARE IN PLACE

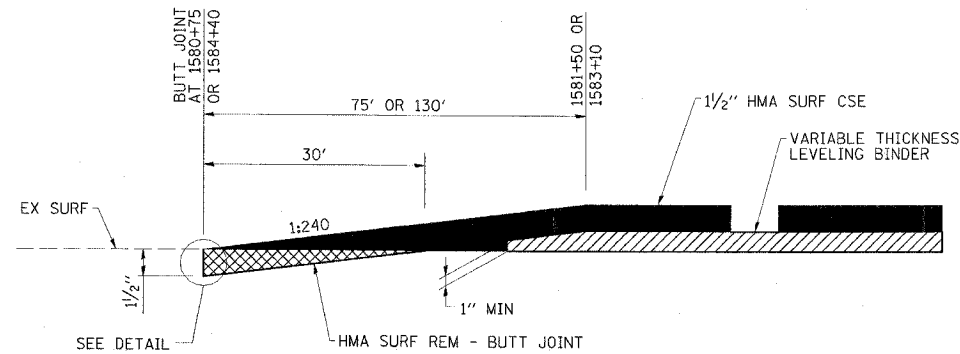
1/8" DIA. HOLES FOR 1" DIA. x 4" ROUND HEAD BOLTS PROVIDE 2 FLAT WASHERS & LOCKNUTS FOR GUARD RAIL CONNECTION



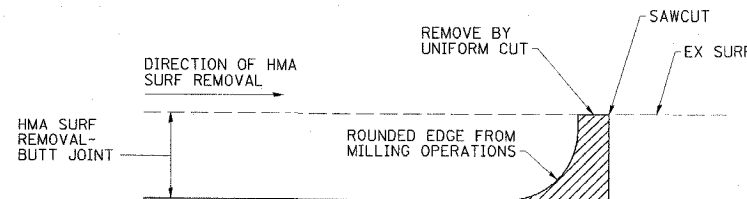
END OF RAIL DETAILS

SPECIAL GUARDRAIL CONNECTION DETAIL

COST OF WORK SHOWN TO BE INCLUDED IN REMOVE AND RE-ERECT SPBGR



TYPICAL BUTT JOINT SECTION



DETAIL AT BUTT JOINT

NOTE: WHEN MILLING OPERATIONS PRODUCE A ROUNDED EDGE, THEN A SAWCUT SHALL BE USED TO MANUFACTURE A PERPENDICULAR EDGE AS SHOWN IN THE DETAIL. THE COST OF ALL WORK SHOWN IN THE DETAIL IS INCLUDED IN HOT-MIX ASPHALT SURFACE REMOVAL - BUTT JOINT. THE ENGINEER SHALL BE THE SOLE JUDGE CONCERNING THE USE OF THIS DETAIL.

CONTRACT NO. 98996				
FAP RTE	SECTION	COUNTY	TOTAL SHEETS	SHEET NO.
869	(105A)BR-1	SALINE	44	11
STA.		TO STA.		
FED. ROAD DIST. NO.		ILLINOIS FED. AID PROJECT		

PLOT DATE = #DAYS
FILE NAME = #FILE#
PLOT SCALE = #SCALE#
REFERENCE = #REF#

ESCA
CONSULTANTS, INC.

DESIGNED BY:	MTD	02/07
DRAWN BY:	DWH	02/07
CHECKED BY:	MTD	02/07
APPROVED BY:	RDP	04/07

MISCELLANEOUS DETAILS
FAP RTE 869 (IL 34)
SECTION (105A)BR-1
SALINE COUNTY