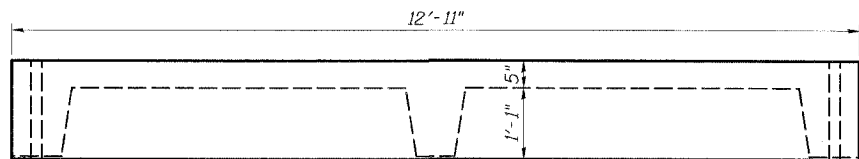
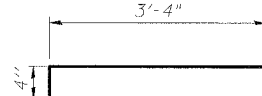


STATE OF ILLINOIS
DEPARTMENT OF TRANSPORTATION

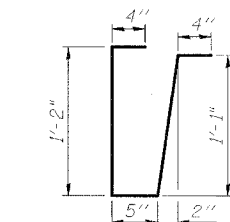
ROUTE NO.	SECTION	COUNTY	STA. POINT	SHEET NO.
FAP 328	*	WHITE	42	18
SHEET NO. 7 17 SHEETS				
FED. ROAD DIST. NO.		SHEET NO.		SHEET NO.
98997		105XJBR		



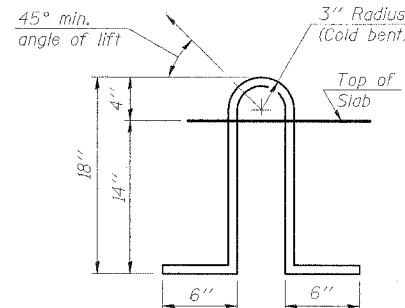
ELEVATION



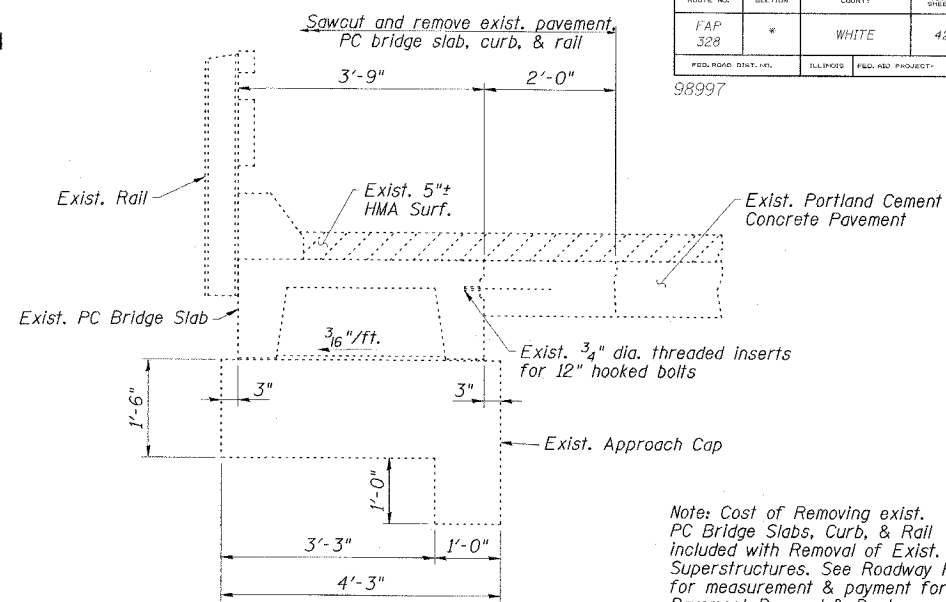
BAR A1



BAR S

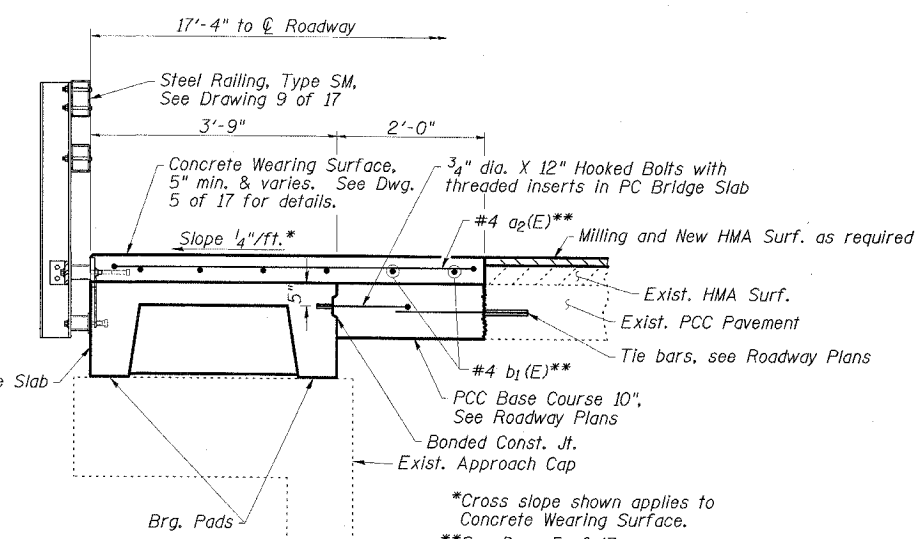


LIFTING LOOP DETAIL



EXISTING CROSS SECTION

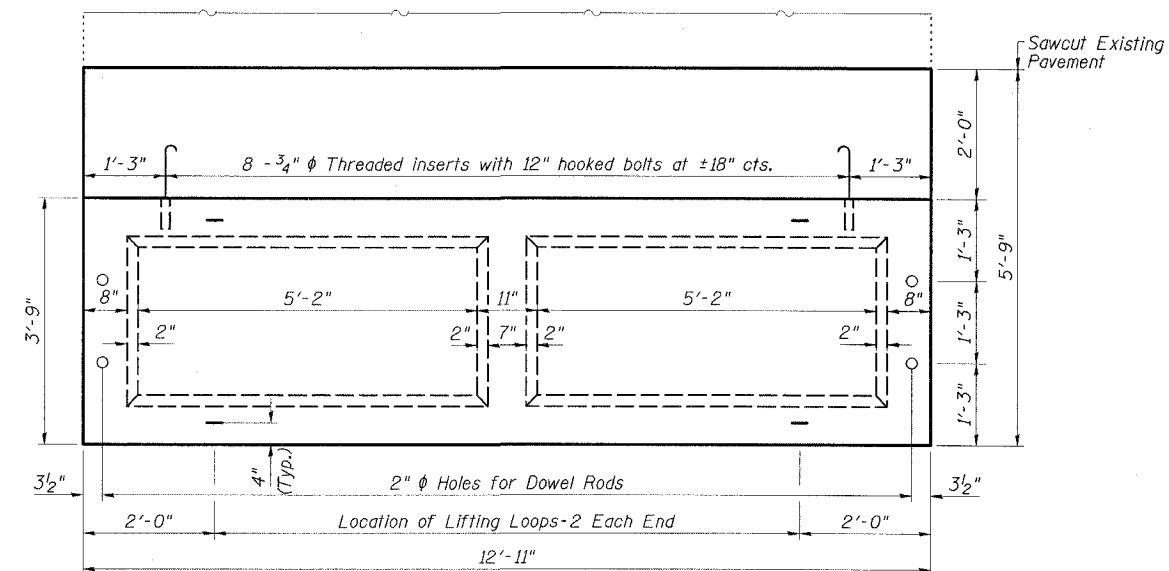
Note: Cost of Removing exist. PC Bridge Slabs, Curb, & Rail included with Removal of Exist. Superstructures. See Roadway Plans for measurement & payment for Pavement Removal & Replacement.



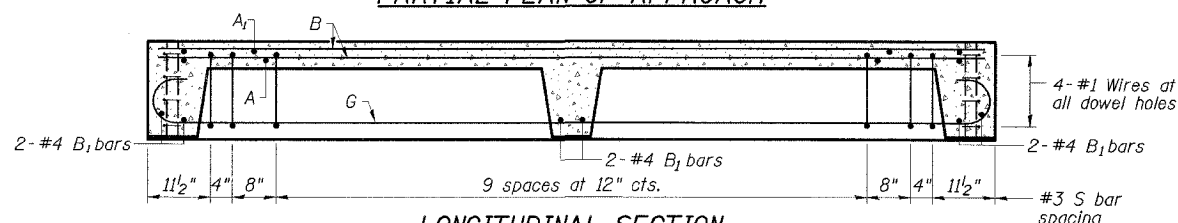
PROPOSED CROSS SECTION

BILL OF MATERIAL

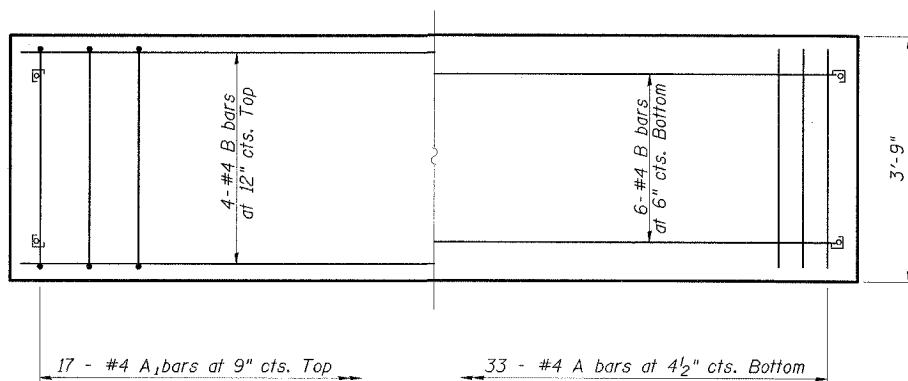
Material	Sq. Ft.	Quantity
Precast Concrete Bridge Slab		194



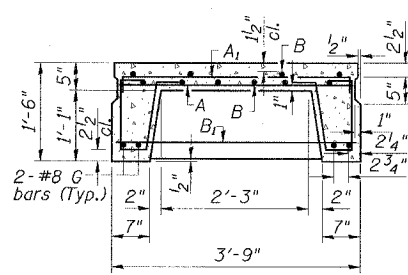
PARTIAL PLAN OF APPROACH



LONGITUDINAL SECTION



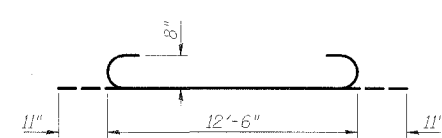
SLAB REINFORCEMENT



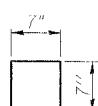
SECTION THRU PRECAST UNIT

NOTES

Lifting loops shall be 2-1/2" Ø-270 ksi strands, as shown.
Reinforcing steel shall conform to ASTM A 706 (IL MOD), Grade 60.
The bearing seat surfaces shall be adjusted by shimming to assure firm and even bearing. Two 1/8" fabric adjusting shims of the dimensions of the Bearing Pad shall be provided for each bearing.
Keyway surfaces shall be cleaned to remove form oil or other bond breaking material prior to shipment of the slabs. Cleaning shall be done by sandblasting the keyway areas between top of the slab and the bottom edge of the key.
Corrosion Inhibitor, per Article 1020.05(b)(12) of the Standard Specifications, shall be used in the concrete for precast concrete bridge slabs.
Required Strength, f'c, shall be 4500 p.s.i.
See Dwg. No. 2 of 17 for location of rail anchors and additional notes.
Cost of reinforcement and accessories cast into the slab unit, bearing pads, furnishing, drilling for, placing and grouting anchor rods and 3/4" Ø hooked bolts is included in contract Unit Price for "Precast Concrete Bridge Slab."
The Precast Concrete Bridge Slab shall be erected and aligned with the exterior face of the exterior Deck Beam after Deck Beams are in final position.



BAR G



FABRIC BEARING PAD

ESCA
CONSULTANTS, INC.

DESIGNED BY:	RDP	01/07
DRAWN BY:	DWH	01/07
CHECKED BY:	JMS/MTD	01/07
APPROVED BY:	RDP	04/07

APPROACH DETAILS
US 45 OVER SKILLET FORK OVERFLOW
FAP ROUTE 328 - SECTION (105X)BR
WHITE COUNTY
STATION 598+76.00
STRUCTURE NO. 097-0019