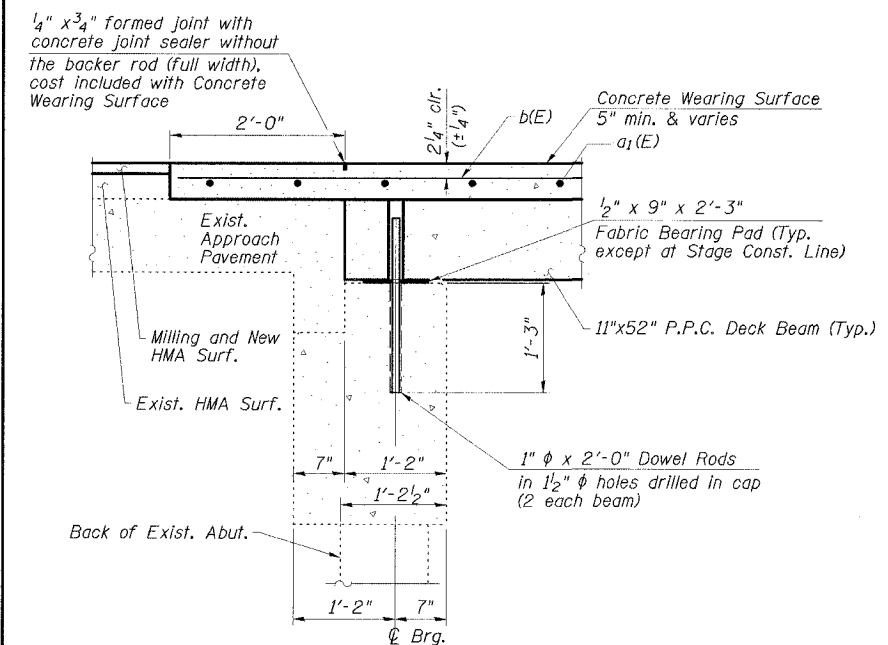
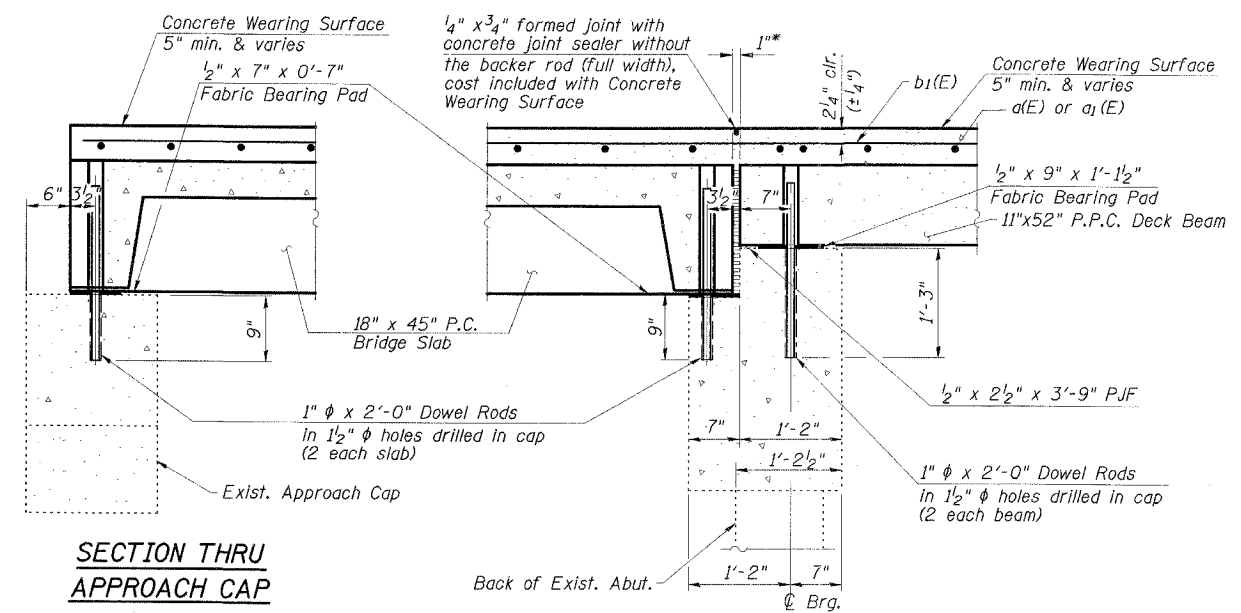
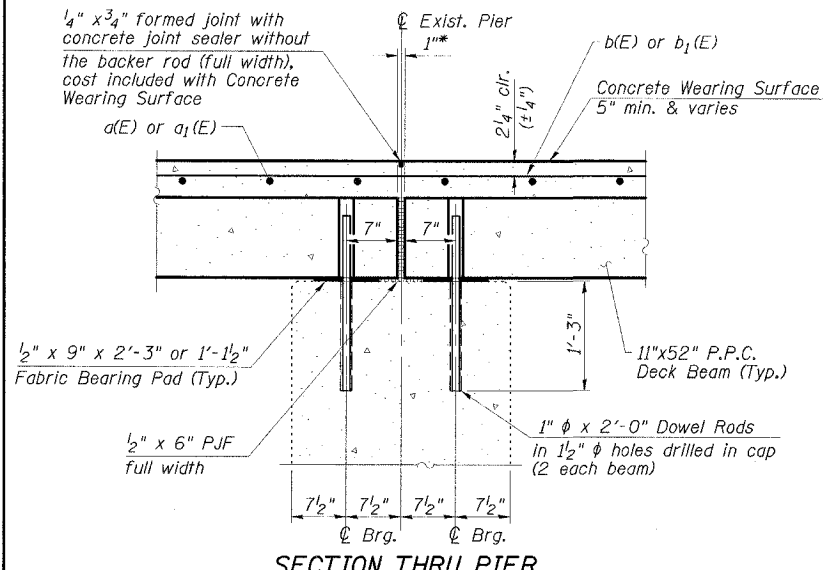


STATE OF ILLINOIS
DEPARTMENT OF TRANSPORTATION

ROUTE NO.	SECTION	COUNTY	SHEET NO.	SHEET	SHEET NO. 8 17 SHEETS
FAP 328	*	WHITE	42	19	
FED. ROAD DIST. NO.	ILLINOIS	FED. AID PROJECT	98997		



* 1" joint shall be filled w/non-shrink grout, 1" dimension may vary to accommodate variation in beam lengths

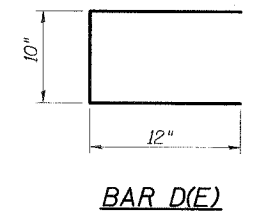
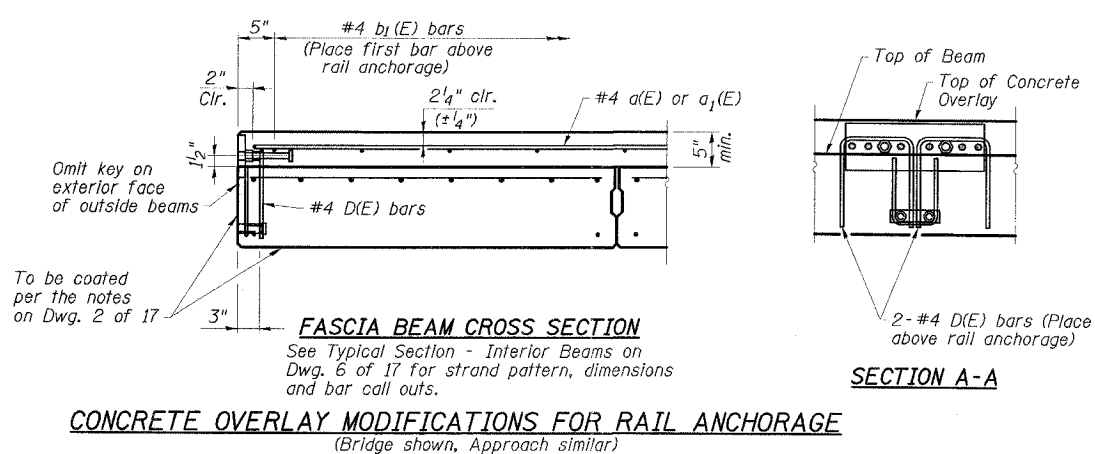
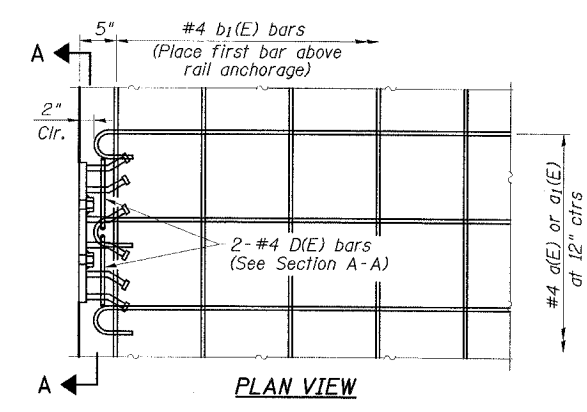
NOTES

After beams have been erected, holes shall be drilled into substructure and dowels rods placed. Dowel holes shall be filled with non-shrink grout to top of beam and allowed to cure min. 24 hrs. prior to grouting the shear keys.

Concrete wearing surface to be poured after grouting the shear keys.

Dowel rods drilled in cap are included in the cost of Precast Prestressed Concrete Deck Beams (11" depth) or Precast Concrete Bridge Slabs.

The rail anchorage shall be cast with the beam or slab and the wearing surface shall be cast in the field. Formwork necessary for the wearing surface may be secured utilizing the bottom rail anchorage inserts and/or additional inserts cast into the beam or slab. Drilling into the beam or slab will not be permitted.



SUPERSTRUCTURE AND APPROACH DETAILS
US 45 OVER SKILLET FORK OVERFLOW
FAP ROUTE 328 - SECTION (105X)BR
WHITE COUNTY
STATION 598+76.00
STRUCTURE NO. 097-0019

ESCA
CONSULTANTS, INC.

DESIGNED BY: RDP 01/07
DRAWN BY: DWH 01/07
CHECKED BY: JMS/MTD 01/07
APPROVED BY: RDP 04/07