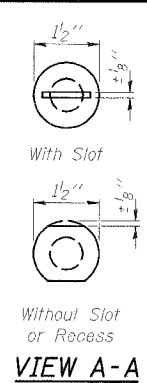
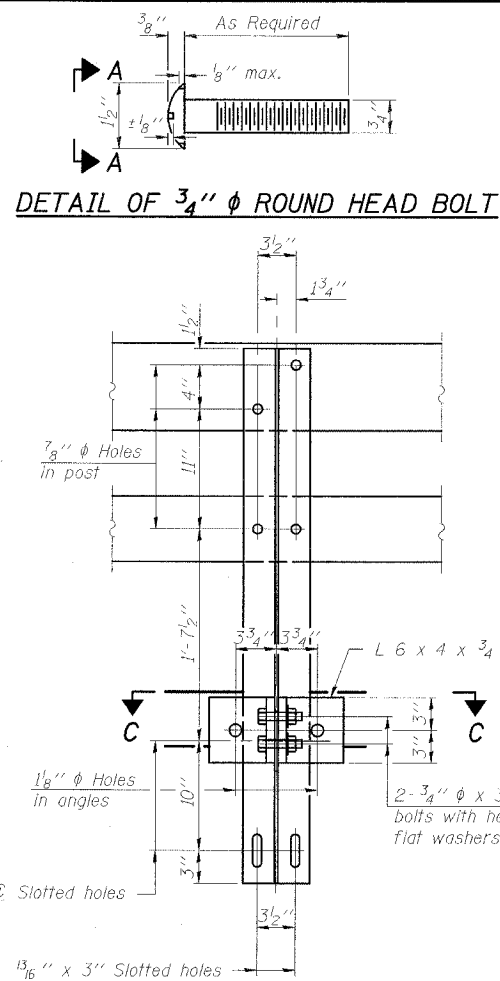


STATE OF ILLINOIS
DEPARTMENT OF TRANSPORTATION

| | | | | | |
|---------------------|----------|-------------------|---------|-----------|-------------|
| ROUTE NO. | SECTION | COUNTY | STATION | SHEET NO. | SHEET NO. 9 |
| FAP 328 | * | WHITE | 42 | 20 | 17 SHEETS |
| FED. ROAD DIST. NO. | ILLINOIS | FED. AID PROJECT- | | | |
| 98997 | | | | | (105X)BR |

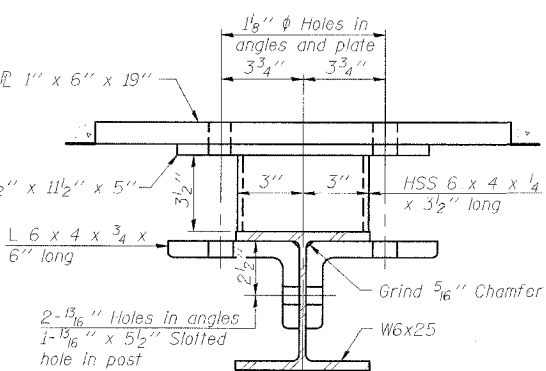
DETAIL OF 3/4" φ ROUND HEAD BOLT



VIEW A-A

4- 3/4" φ x 6" Round Head Bolts (With slot or approved recess in head) with locknut & flat washer. 7/8" φ holes in hollow structural section may be drilled in the field.

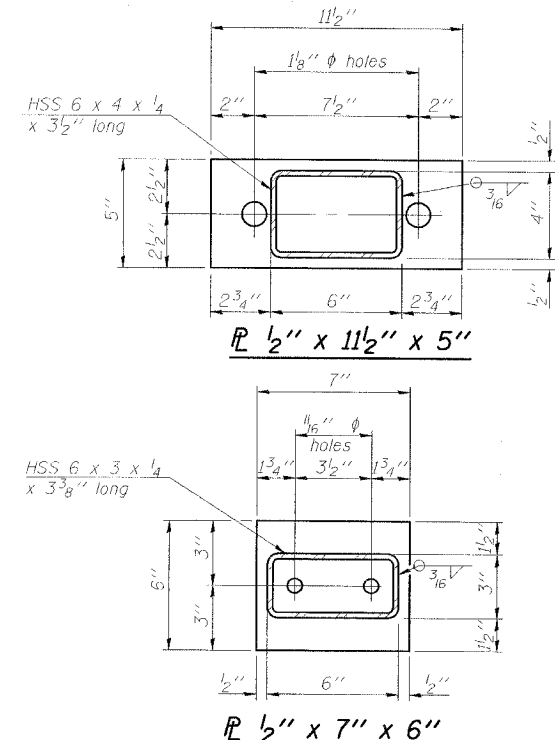
SECTION B-B



SECTION C-C

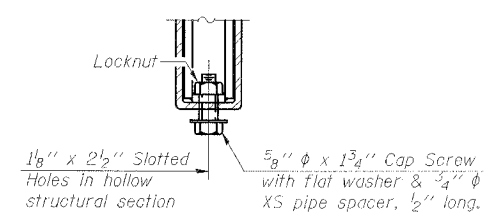


SECTION AT RAIL POST



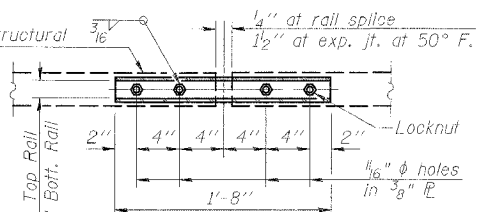
1/2" x 7" x 6"

RAIL SPLICE CONNECTION AT EXPANSION JT.

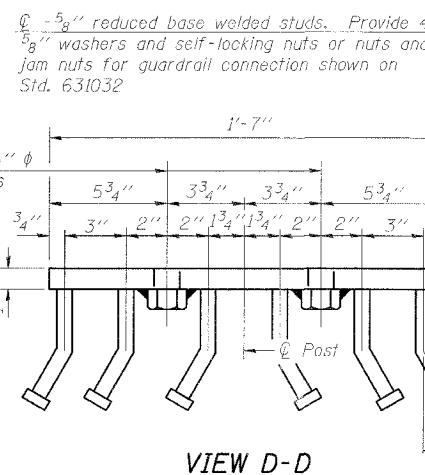


RAIL SPLICE CONNECTION AT EXPANSION JT.

PLAN-BOTT. SPLICE AT TYPICAL

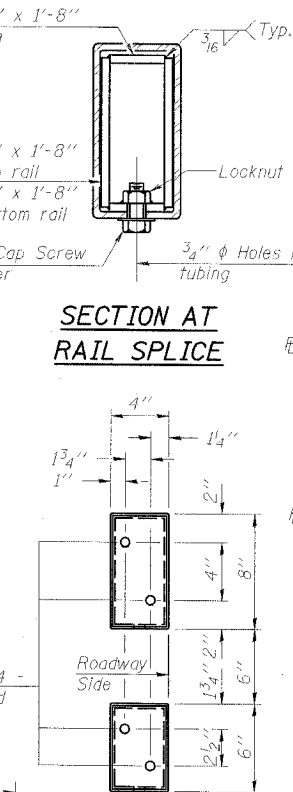


PLAN-BOTT. SPLICE AT TYPICAL

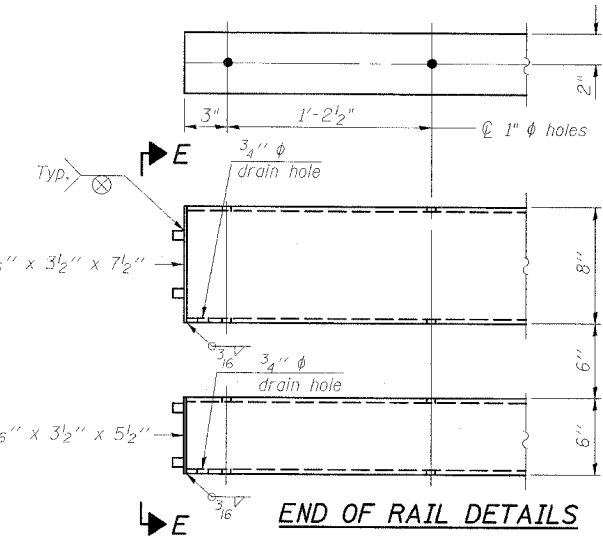


VIEW D-D

SECTION AT RAIL SPLICE



VIEW E-E



END OF RAIL DETAILS

Notes:
All field drilled holes shall be coated with an approved zinc rich paint before erection.
For multi-span bridges, sufficient 1/4" x 6" x 1-2" galvanized steel shims shall be provided to align rail between adjacent spans. Cost included with Steel Railing, Type SM.
Steel rail elements shall be galvanized according to Article 509.05 of the Standard Specifications.
** The studs of the anchor devices shall be placed below the top reinforcement bars and the outermost longitudinal reinforcement bar shall be placed directly above the studs of the rail post anchor device.

BILL OF MATERIAL

| Item | Unit | Quantity |
|------------------------|------|----------|
| Steel Railing, Type SM | Foot | 228 |

STEEL RAILING, TYPE SM
WITH CONCRETE WEARING SURFACE
US 45 OVER SKILLET FORK OVERFLOW
FAP ROUTE 328 - SECTION (105X)BR
WHITE COUNTY
STATION 598+76.00
STRUCTURE NO. 097-0019

* Threaded areas shall be plugged or blocked off during casting of beam. Galvanized after fabrication.

ESCA
CONSULTANTS, INC.
DESIGNED BY: RDP 01/07
DRAWN BY: DWH 01/07
CHECKED BY: JMS/MTD 01/07
APPROVED BY: RDP 04/07

(6'-3" Maximum Post Spacing) (5" minimum to 7/8" maximum CWS thickness)