



CONTRACT NO. 98997				
FAP RTE	SECTION	COUNTY	TOTAL SHEETS	SHEET NO.
328	(105X)BR	WHITE	42	29
STA.		TO STA.		
FED. ROAD DIST. NO.		ILLINOIS FED. AID PROJECT		

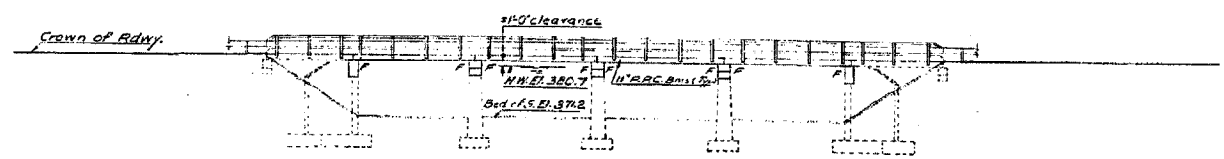
B.M. #1 - Top of bolt E. end of S. Pier R.R. Trestle 80'
RA Sta. 599+10 Elev. 378.76
Existing structure: Built as S.E.I. Route 140,
Sec. 105 B, at Sta. 598+76 in the year 1928.
The existing R.C. slab substructure was
removed and replaced with RAC Deck
Bms. using stage construction. The existing
substructure to be rebuilt as required to
accommodate the new widened superstructure.

STATE OF ILLINOIS
DEPARTMENT OF TRANSPORTATION

DATE	BY	REVISION
10/20/07	MTD	1.0
10/20/07	HAG	2.0
10/20/07	YH	3.0
10/20/07	YH	4.0
10/20/07	YH	5.0

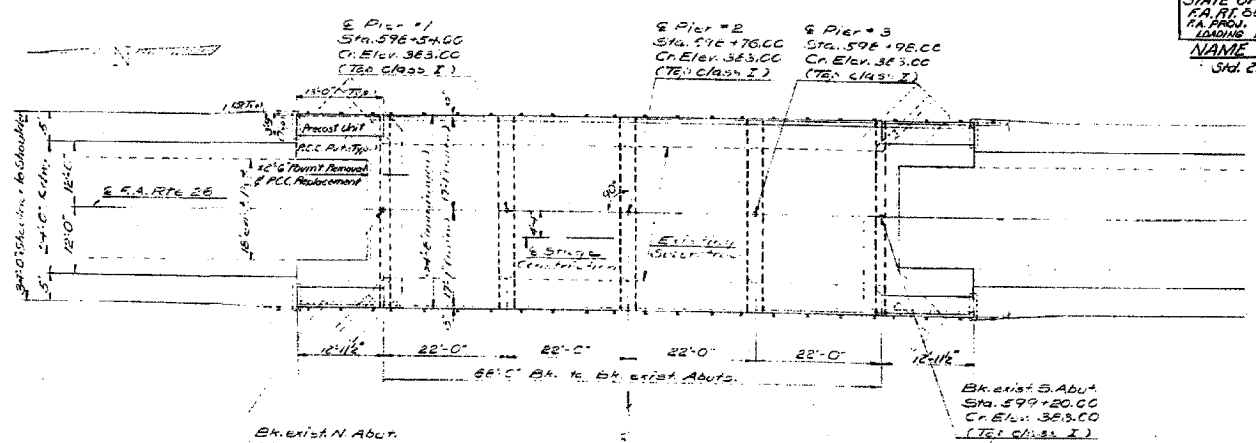
GENERAL NOTES

All reinforcement bars shall be lapped 24 diameters unless otherwise shown.
It shall be the responsibility of the contractor to verify all dimensions and conditions existing in the field prior to construction and ordering of materials.
Protective Coat shall not be applied to surfaces to which Waterproofing Membrane System is applied.
Expansion bolts shall consist of self-drilling expansion anchors and 3/4" hooked bolts. Hooked bolts shall extend a minimum of 12" into new concrete unless otherwise shown.
Shoulder transition to wingwall shall be shaped with broken concrete. Cost incidental.
Limits of Waterproofing Membrane System shall be two feet beyond end of deck beams and out to out of deck.
The top surface of the beams shall be finished in accordance with Article 305.06 of Standard Specifications except that the surface shall not be roughened by brooming. The finished surface shall be free of depressions or of high spots with sharp corners.
The existing guardrail on the bridge shall be removed in accordance with the applicable portions of the specifications for "Steel Plate Beam Guardrail, Removal, & Salvage".



ELEVATION

STATION 598+76.00
BUILT BY
STATE OF ILLINOIS
R.A. RT. 68, SPEC. 105 BR-2
R.A. PROJ. F-88(0)
LOADING HS 20
NAME PLATE
Std. 213



PLAN

TOTAL BILL OF MATERIAL

Item	Unit	Super	Sub	Total
Bituminous Concrete Surface Course Class I	Ton	30		30
Portland Cement Concrete Pavement (10")	Sq. Yd.	26		26
Pavement Fabric	Sq. Yd.	26		26
Removal of Existing Superstructures	Each	1		1
Concrete Removal	Cu. Yd.	26	26	52
Expansion Bolts 3/4"	Each	32	160	192
Class I Concrete	Cu. Yd.	2.5	78.5	81
Precast Concrete Bridge Slab	Sq. Ft.	190		190
Precast Prestressed Concrete Deck Beams (11" Depth)	Sq. Ft.	3039		3039
Reinforcement Bars	Pound	300	5540	5840
Waterproofing Membrane System	Sq. Yd.	300		300
Pavement Removal & Portland Cement Concrete Replacement Type II (10")	Sq. Yd.	10		10
Steel Rolling Type T	Lin. Ft.	228		228
Temporary Guardrail	Lin. Ft.	88		88
Protective Coat	Sq. Yd.	38		38
Portland Cement Mortar Firing Course	Lin. Ft.	619		619
Name Plates	EA.	1		1

* See Special Provisions

PRECAST PRESTRESSED UNITS

f'c = 5000 psi
f'ci = 4000 psi
f's = 27000 psi (7 strands)
f'sr = 165700 psi (6 strands)

FIELD UNITS

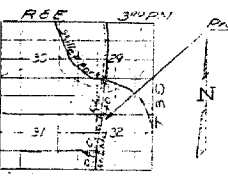
f'c = 4000 psi
f's = 20000 psi (Reinf.)
T = 10

WATERWAY INFORMATION

Drainage Area 916 sq. ft.
Precip. & clearing 700 sq. ft.
Required opening 665 sq. ft.
Prop. 222 opening 700 sq. ft.

PROPOSED PROFILE PARTIAL

DESIGNED	John A. Monis	EXAMINED	[Signature]
CHECKED	J. J. Edwards	PAIRED	[Signature]
DRAWN	Y. H.	APPROVED	[Signature]
CHECKED	[Signature]		



LOCATION SKETCH

PROJECT R-82(2)
GENERAL PLAN & ELEVATION
(F.A. RT. 68) OVER SKILLET FORK
OVERFLOW
(F.A. RTE 328) - SECTION 105 BR-2
WHITE COUNTY
STA. 598+76.00

ESCA
CONSULTANTS, INC.

DESIGNED BY:	MTD	02/07
DRAWN BY:	HAG	02/07
CHECKED BY:	MTD	02/07
APPROVED BY:	RDP	04/07

FOR INFORMATION ONLY

EXISTING STRUCTURE PLANS
FAP RTE 328 (US 45)
SECTION (105X)BR
WHITE COUNTY